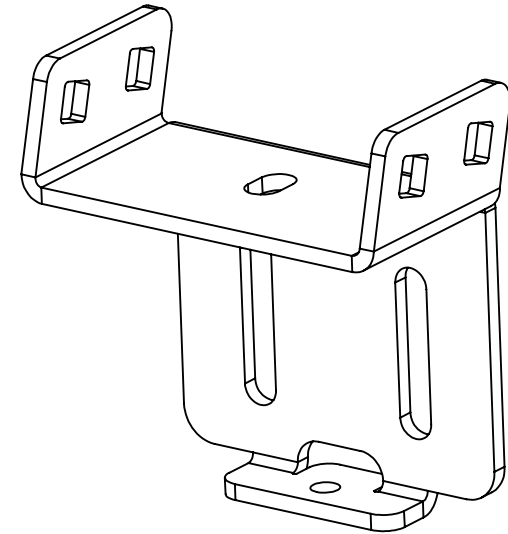
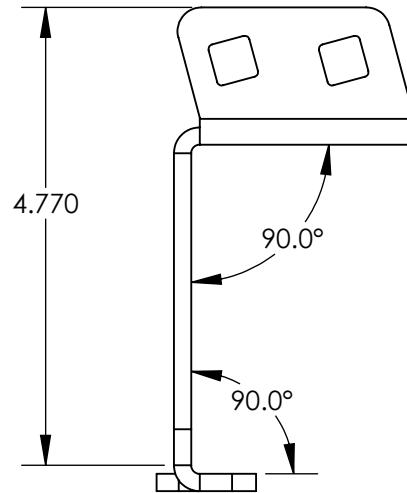
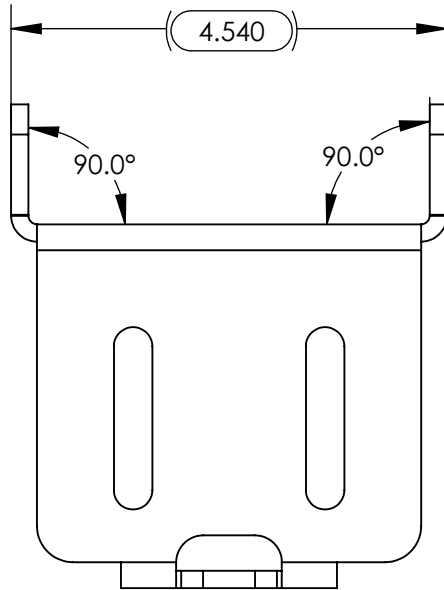
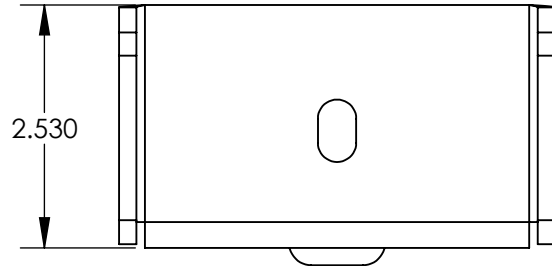


**\*\* ROAD ARMOR USE ONLY \*\***

| REVISIONS |      |                 |            |          |
|-----------|------|-----------------|------------|----------|
| ZONE      | REV. | DESCRIPTION     | DATE       | APPROVED |
|           | -00  | INITIAL RELEASE | 12/12/2019 | C.M.F    |



**2x Per Rack**



MATERIAL: ASTM A36 Steel .180" P&O  
 AMOUNT: IN<sup>2</sup>

**PROPRIETARY AND CONFIDENTIAL:**

THE INFORMATION CONTAINED IN THIS DRAWING IS THE SOLE PROPERTY OF ROAD ARMOR.

THE INFORMATION CONTAINED IN THIS DOCUMENT, IN PART OR AS A WHOLE, SHALL NOT BE REPRODUCED, USED, OR DISCLOSED TO OTHERS WITHOUT WRITTEN PERMISSION FROM ROAD ARMOR.



**DIMENSIONS ARE IN INCHES**

**TOLERANCES:**  
 2 PLACE DECIMAL .01  
 3 PLACE DECIMAL .005  
 4 PLACE DECIMAL .0005  
 ANGULAR 1°

MATERIAL  
 ASTM A36 Steel .180" P&O

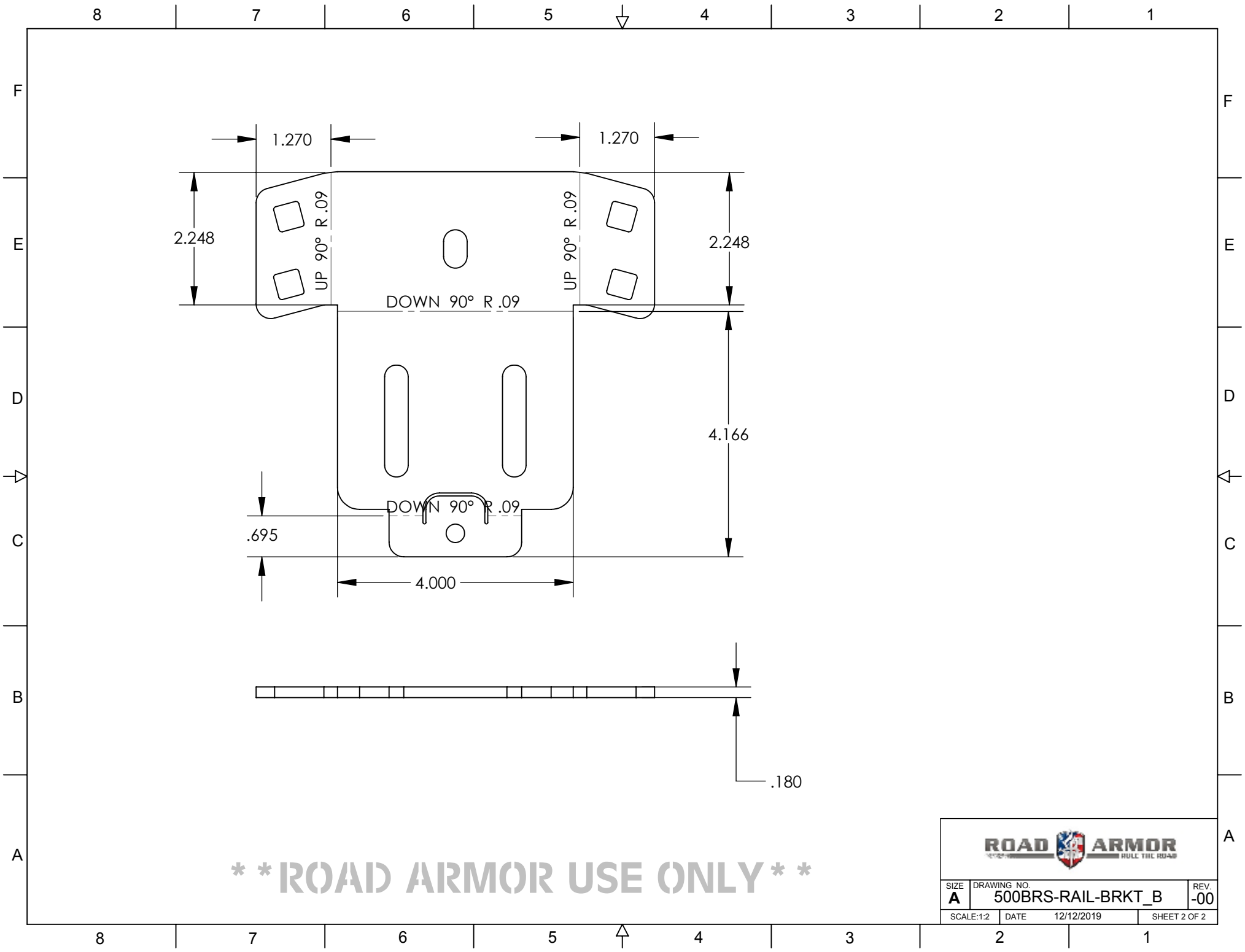
PROCESS  
 LASER CUT - BEND

FINISH  
 POWDER COAT

|            | NAME            | DATE       |
|------------|-----------------|------------|
| DRAWN      | CHRIS FAUSTMANN | 12/12/2019 |
| CHECKED    |                 |            |
| ENG. APPR. |                 |            |
| MFG. APPR. |                 |            |
| Q.A.       |                 |            |

COMMENTS:

| ROAD ARMOR   |  |                   |
|--|--|-------------------|
| TITLE  |  |                   |
| BRACKET, REAR MAIN MOUNT,<br>BED RACK SYSTEM MID-SIZE<br>TRUCK |  |                   |
| SIZE<br><b>A</b>   | DRAWING NO.<br><b>500BRS-RAIL-BRKT_B</b> | REV<br><b>-00</b> |
| SCALE:1:2  | WEIGHT: 1.4675lbs                        | SHEET 1 OF 2      |



**\*\* ROAD ARMOR USE ONLY \*\***



|                  |  |                    |
|------------------|--|--------------------|
| SIZE<br><b>A</b> | DRAWING NO.<br><b>500BRS-RAIL-BRKT_B</b> | REV.<br><b>-00</b> |
| SCALE:1:2        | DATE<br>12/12/2019                       | SHEET 2 OF 2       |