

INSTALL INSTRUCTIONS

Rear Vaquero Bumper

Product : 4192VR

Application : 2019+ DODGE RAM 2500/3500

(5th Gen)

I WARNING

Read the instructions completely before beginning installation. Before tightening bolts, drilling or cutting where required, check to make sure there are no obstructions such as brake, fuel or electrical lines which may be damaged. Also keep in mind this is an after-market product and MAY require minor shimming and/or trimming, reaming, etc. for proper fit. Road Armor is not responsible for any damages to vehicle.

i IMPORTANT NOTICE

- Be sure to inspect and test fit your product to ensure proper fitment before having it coated, painted, bed lined, etc.
- Road Armor will not be responsible for the cost of coating your unit if any problems with fit or finish are not noted and addressed beforehand.

SAFETY FIRST!

- FOLLOW ALL INSTRUCTIONS, YOUR SAFETY AND THE SAFETY OF OTHERS IS MOST IMPORTANT.
- WEAR APPROPRIATE EYE PROTECTION AND EXERCISE CAUTION WHEN DRILLING / CUTTING

REQUIRED TOOLS

SAE/Metric Socket and Wrench Set

Pick Tools

SAE Allen Head Wrenches

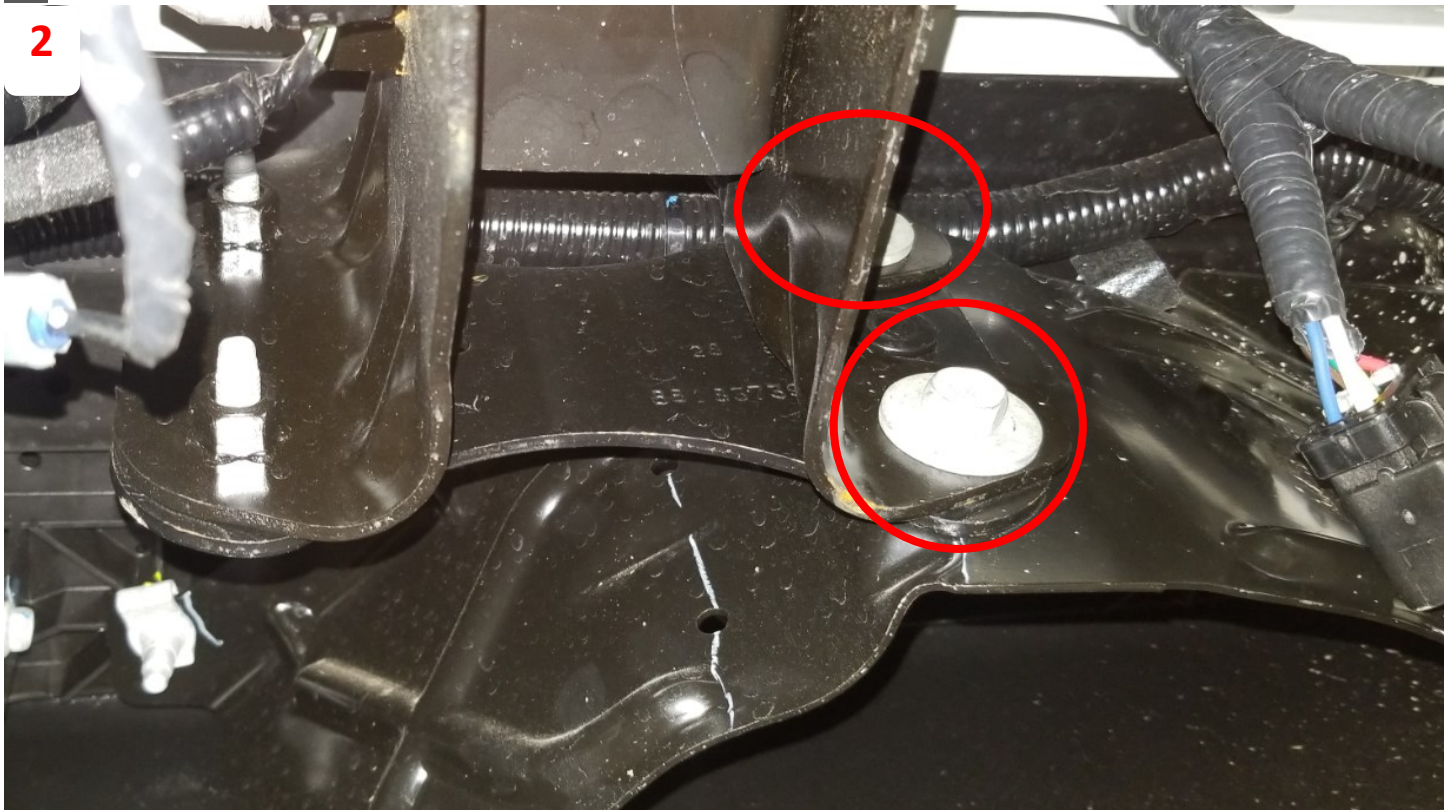
Wire Strippers

Wire Connectors (solder or pinch connectors)

INCLUDED HARDWARE

4	1.5" Bolt Tab	4	1/4" Flat Washer
4	1/2" Flat Washer	4	#8-32 X 3/4" Hex Drive Socket Cap Screw
4	1/2" Split Lock Washer	4	#8-32 K-Lock Nut
4	1/2"-13 Hex Nut	2	License Plate Light
2	1/2" Push Nut Bolt Retainer	4	#10-24 x 3/4" Stainless Button Cap Bolt
2	1/4"-20 X 3/4" Hex Head Bolt	4	#10-20 K-Lock Nut
2	1/4"-20 K-Lock Nut	6	1 1/8" Dome Plug
6	Rubber Grommet		

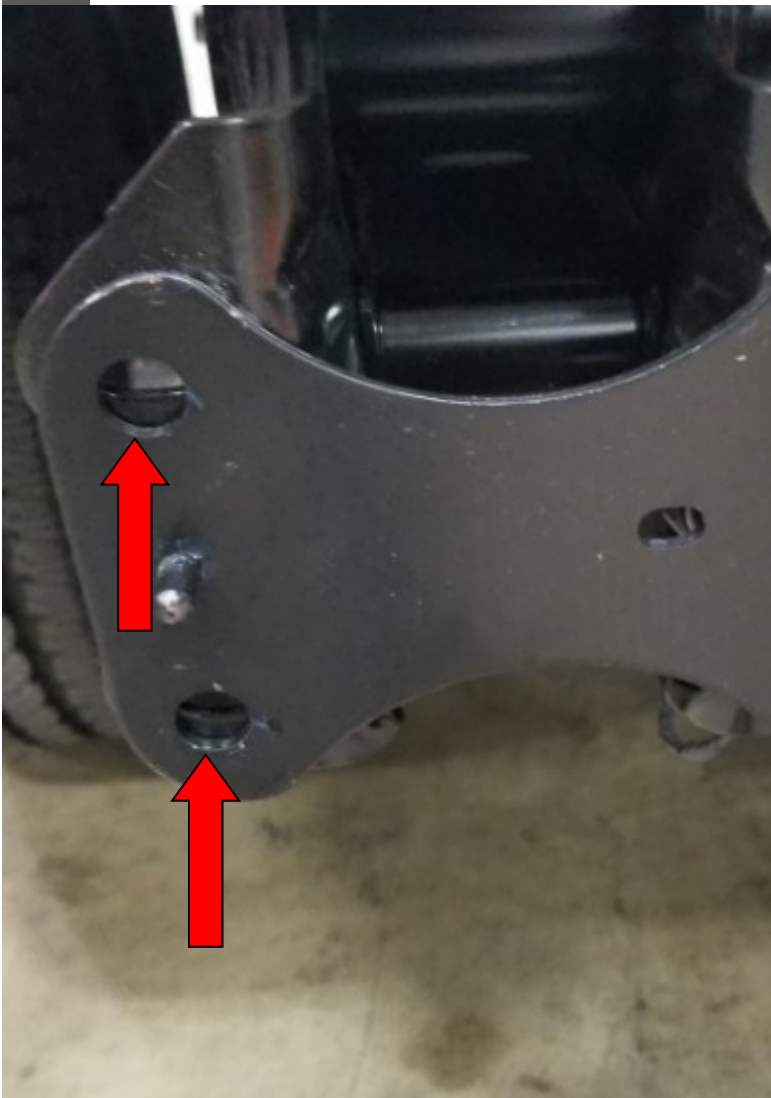
- 1** Unplug the wiring harness from truck to bumper and make sure there are no clips holding the bumper to the truck.
- 2** Remove the bolts from the frame to bumper
- 3** Remove the bumper from truck.
- 4** Remove the sensors from bumper (if Applicable) with the pick tool.
To remove the sensors, carefully pry the sensor housing away from the rear of the sensor. This will unfasten the tabs that hold the sensor in place and you will be able to push on the front of the sensor to cause the sensor to come out the back.
- 5** Install rubber grommets and place sensors into bumper
- 6** Install license plate lights and aftermarket lighting options.



- 7 Place the bolt tabs into bumper and secure using the push nut retainers
Apply the push nut retainers with a socket to save your fingers some pain.
- 8 Place the bumper onto the truck by lining up the bolt tabs with the holes in the frame bracket.
- 9 Secure the bumper in place using the 1/2" hardware and slightly tighten.
- 10 Adjust the bumper up/down to preference ensuring the tailgate will not hit the bumper when lowered.
- 11 Tighten 1/2" hardware fully.
- 12 Splice Road Armor license plate lights into existing license plate wiring harness.

13 Re-connect wiring harnesses.

14 For some models, there will be a rectangular sensor behind the license plate on the stock bumper. (This is a signal extender for your remote). This can be secured with a zip tie where you prefer behind the bumper.



Finished