

# INSTALL INSTRUCTIONS

**MAKE MODEL PRODUCT**

**Product : XXX, XXX**

**Application : YEAR RANGE MAKE MODEL**

**( ADDITIONAL APPLICATION NOTE )**

## I WARNING

Read the instructions completely before beginning installation. Before tightening bolts, drilling or cutting where required, check to make sure there are no obstructions such as brake, fuel or electrical lines which may be damaged. Also keep in mind this is an after-market product and MAY require minor shimming and/or trimming, reaming, etc. for proper fit. Road Armor is not responsible for any damages to vehicle.

## ⓘ IMPORTANT NOTICE

- Be sure to inspect and test fit your product to ensure proper fitment before having it coated, painted, bed lined, etc.
- Road Armor will not be responsible for the cost of coating your unit if any problems with fit or finish are not noted and addressed beforehand.

## SAFETY FIRST!

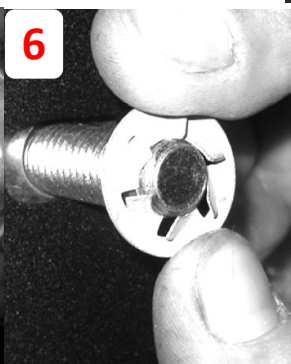
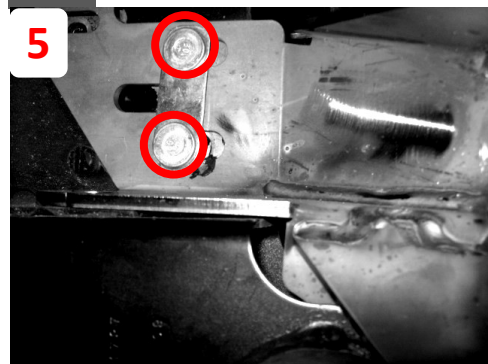
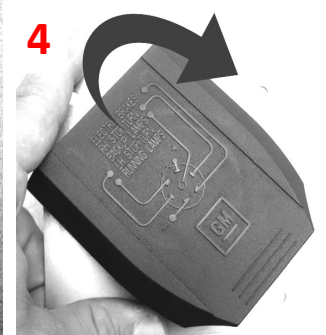
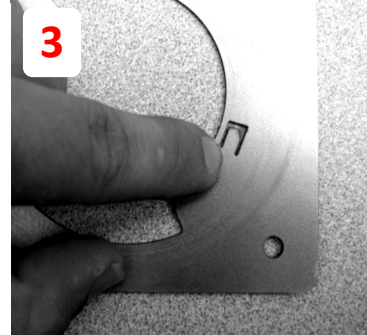
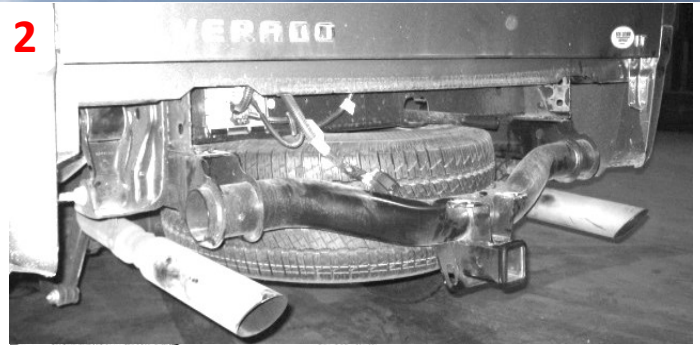
- FOLLOW ALL INSTRUCTIONS, YOUR SAFETY AND THE SAFETY OF OTHERS IS MOST IMPORTANT.
- WEAR APPROPRIATE EYE PROTECTION AND EXERCISE CAUTION WHEN DRILLING / CUTTING

## INCLUDED HARDWARE

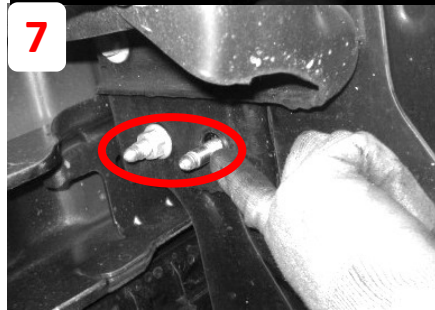
- 8 8-32 x 3/4" Grade 8 Cap Screw
- 8 8-32 Lock Nut
- 12 1/2" x 1.375" General Purpose Flat Washer
- 12 1/2" Split Lock Washer
- 12 Bolt Tabs
- 12 1/2"-13 Grade 8 Hex Nut
- 4 Back Up Sensor Plugs
- 2 License Plate Lights



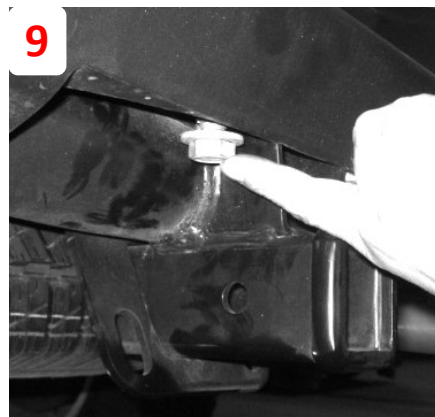
- 1 Disconnect all sensors, trailer plug and license plate lights from bumper.
  - 2 Remove OEM Hardware and remove bumper
  - 3 On the trailer plug mount, bend tab as shown in picture
  - 4 Install plug and turn clockwise until you feel it lock in place
  - 5 Loosely fit brackets onto frame using supplied hardware
- Note** Brackets may vary from Chevy to GMC but install is still the same
- 6 Install one bolt on each side of bumper using retaining clips



**Note** It is a good idea to wrap the corner of the bumper to prevent scratching your paint



- 7 Carefully mount the bumper on the brackets, and snug down hardware
- 8 While bumper is still loose adjust until it lines up right, then tighten down all of the hardware
- 9 If you have factory hitch there are cutouts to bolt the hitch to the bumper for support



**Finished**