



INSTALL INSTRUCTIONS

iDentity Headache Rack

Product Range : **DHR**

I WARNING

Read the instructions completely before beginning installation. Before tightening bolts, drilling or cutting where required, check to make sure there are no obstructions such as brake, fuel or electrical lines which may be damaged. Also keep in mind this is an after-market product and MAY require minor shimming and/or trimming, reaming, etc. for proper fit. Road Armor is not responsible for any damages to vehicle.

ⓘ IMPORTANT NOTICE

- Be sure to inspect and test fit your product to ensure proper fitment before having it coated, painted, bed lined, etc.
- Road Armor will not be responsible for the cost of coating your unit if any problems with fit or finish are not noted and addressed beforehand.

SAFETY FIRST!

- FOLLOW ALL INSTRUCTIONS, YOUR SAFETY AND THE SAFETY OF OTHERS IS MOST IMPORTANT.
- WEAR APPROPRIATE EYE PROTECTION AND EXERCISE CAUTION WHEN DRILLING / CUTTING

REQUIRED TOOLS

SAE & Metric Sockets and Wrenches

Drill

Allen wrenches

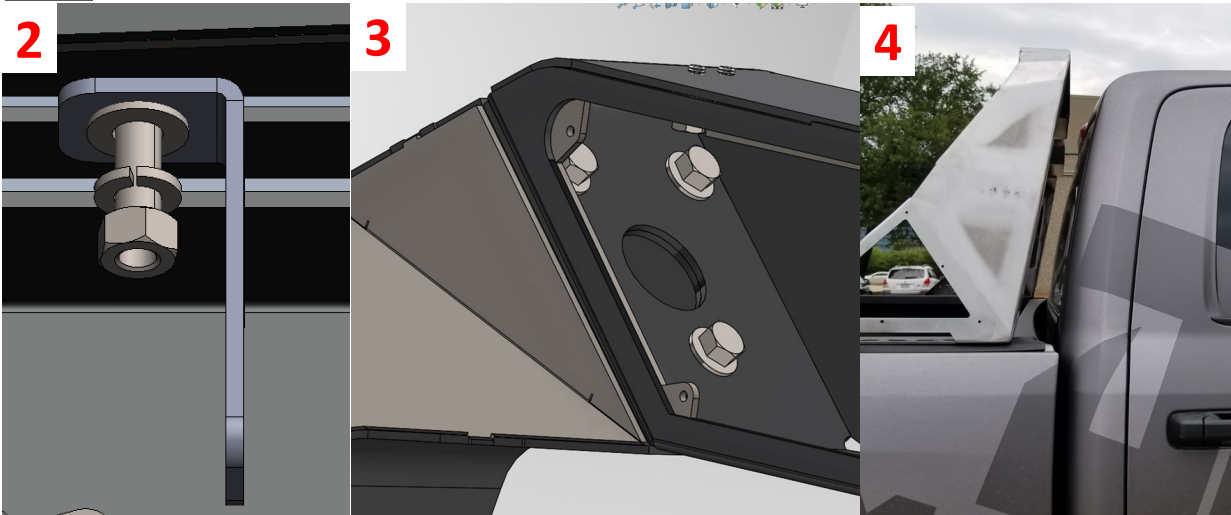
3/4" Drill Bit or 3/4" Step Bit

Thread locker (Medium Strength)

INCLUDED HARDWARE

- 46 #10-24 x 1/2" Button Socket Cap Screw
- 18 #10-24 K-Lock Nut
- 6 3/8"-16 x 1" Hex Cap Bolt
- 6 3/8" - 16 x 1-3/4" Button Cap Bolt
- 12 3/8" Flat Washer
- 4 5/16" Flat Washer
- 4 5/16"-18 x 1" Carriage Bolt
- 4 5/16-18 18-8 Stainless Steel Finished Hex Nut
- 4 5/16" Split Lock Washer

- 1 Measure width of light bar for installation on the center section of the headache rack.
- 2 Install Light brackets with 5/16" hardware (carriage bolt, flat washer, split lock washer, and nut)
- 3 Install 3/8" washers and bolts(3 per side) into the center section finger tight. (The adjoined pieces will need to swivel slightly initially for correct fitment)
- 4 Line up headache rack to desired position on truck bed. (The center section of the headache rack will swivel slightly to change the angle of the bases)
- 5 Tighten the 3/8" bolts connecting the center section to the bases.



- 6 Mark the locations for the 3/4" holes to be drilled (3 per side). Move the headache rack away from the hole location

Note: (Make sure that the holes will not interfere with the components of the truck bed. They are big holes make sure they are in the correct location.)

- 7 Drill a pilot hole in the marked locations then use the step bit/drill bit to fully drill the holes to 3/4" diameter.
- 8 Install the 3/8" toggler nuts into the drilled holes (3 per side)
- 9 Place the headache rack on the toggler nut locations and finish alignment of the headache rack



10 Apply thread locker to the 3/8" button head bolts. Insert and tighten fully the 3/8" button head bolts from the base to the bed.

11 Install lights into the center section and bases

Note: Start wiring your lights before installation of the mesh.

12 Install the backplate on the base using 10-24 hardware (bolts and nuts)

13 Install mesh on the entire headache rack using 10-24 hardware.

