



INSTALL INSTRUCTIONS

TOYOTA TUNDRA REAR BUMPER

Product : 9222R0B

Application : 2022+ Toyota Tundra

I WARNING

Read the instructions completely before beginning installation. Before tightening bolts, drilling or cutting where required, check to make sure there are no obstructions such as brake, fuel or electrical lines which may be damaged. Also keep in mind this is an after-market product and MAY require minor shimming and/or trimming, reaming, etc. for proper fit. Road Armor is not responsible for any damages to vehicle.

ⓘ IMPORTANT NOTICE

- Be sure to inspect and test fit your product to ensure proper fitment before having it coated, painted, bed lined, etc.
- Road Armor will not be responsible for the cost of coating your unit if any problems with fit or finish are not noted and addressed beforehand.

SAFETY FIRST!

- FOLLOW ALL INSTRUCTIONS, YOUR SAFETY AND THE SAFETY OF OTHERS IS MOST IMPORTANT.
- WEAR APPROPRIATE EYE PROTECTION AND EXERCISE CAUTION WHEN DRILLING / CUTTING

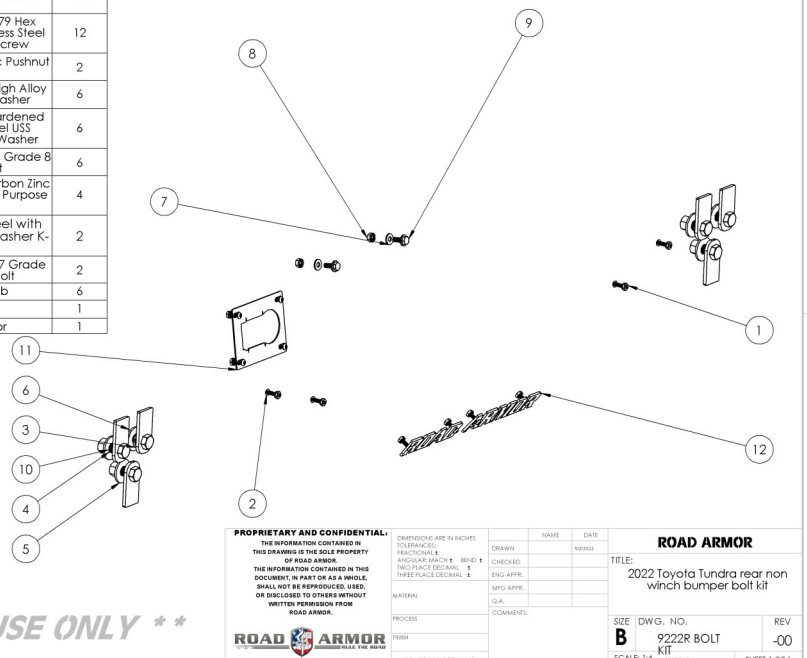
REQUIRED TOOLS

Metric and SAE Socket Sets and Wrenches

Cut off wheel

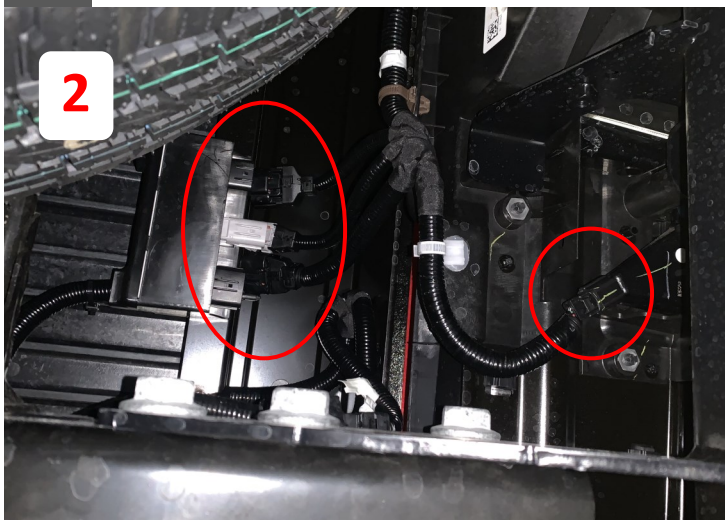
INCLUDED HARDWARE

ITEM NO.	PART NUMBER	DESCRIPTION	QTY.
1	37407	#10-24 Zinc Finish Steel with External Tooth Lockwasher K-Lock Nut	12
2	73734	#10-24 x 3/4" ASTM F879 Hex Drive Grade 18-8 Stainless Steel Button Socket Cap Screw	12
3	0162849	1/2" Bolt 15/16" O.D. Zinc Pushnut Bolt Retainer	2
4	33895	1/2" Yellow Zinc Finish High Alloy Medium Split Lock Washer	6
5	33861	1/2" x 1.375" OD Thru-Hardened Yellow Zinc Finish Steel USS General Purpose Flat Washer	6
6	36410	1/2"-13 Yellow Zinc Finish Grade 8 Finished Hex Nut	6
7	33078	1/4" x 0.625" OD Low Carbon Zinc Finish Steel SAE General Purpose Flat Washer	4
8	1137410	1/4"-20 Zinc Finish Steel with External Tooth Lock Washer K-Lock Nut	2
9	11003	1/4"-20 x 3/4" ASTM A307 Grade A Zinc Finish Hex Bolt	2
10	11218-05078	1.5" single bolt tab	6
11		Hitch plug	1
12	Small RA	Small Road Armor	1

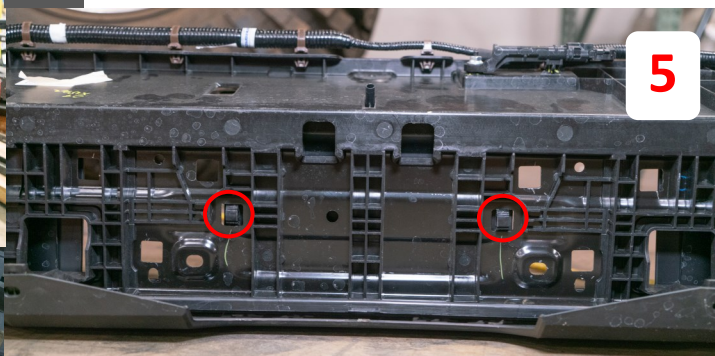


**** ROAD ARMOR USE ONLY ****

- 1 Remove 4 Push Pins and 2 Bolts.
- 2 Unplug Wiring Harness and disconnect Fog Lights/ Reverse Lights.
- 3 Remove Plastic Covers to Expose Bolts to be Removed.

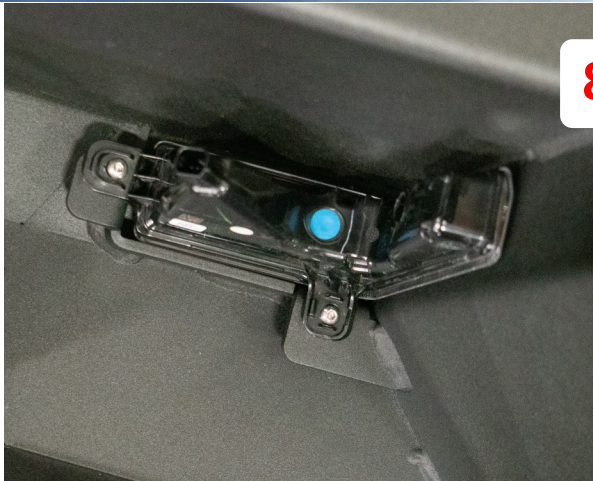


- 4 Remove Bumper off of vehicle.
- 5 Push 2 Clips in to remove Plastic Cover to Access Fog Lights/ Reverse Lights.
- 6 Remove Fog Lights/ Reverse Lights and Remove Wiring Harness.



- 7 Bumper Components Disassembled.





- 8** Mount All Lights and Bolt Tabs (Picture shows 1, but All 3 is Recommended for ease of Installation.
- 9** Mount Logo and Receiver Hitch Plug.
- 10** Mount Brackets to Frame.
- 11** Mount Bumper and Connect Wiring Harness. Adjust bumper for proper fitment. Tighten all bolts.



FINISHED

