



INSTALL INSTRUCTIONS

TOYOTA TUNDRA FRONT BUMPER

Product : 9222FXX

Application : 2022+ Toyota Tundra

(This manual applies to all Stealth Series Front Winch and non-winch Bumpers)

I WARNING

Read the instructions completely before beginning installation. Before tightening bolts, drilling or cutting where required, check to make sure there are no obstructions such as brake, fuel or electrical lines which may be damaged. Also keep in mind this is an after-market product and MAY require minor shimming and/or trimming, reaming, etc. for proper fit. Road Armor is not responsible for any damages to vehicle.

IMPORTANT NOTICE

- **Be sure to inspect and test fit your product to ensure proper fitment before having it coated, painted, bed lined, etc.**
- **Road Armor will not be responsible for the cost of coating your unit if any problems with fit or finish are not noted and addressed beforehand.**

📢 IMPORTANT NOTICE

- **This Bumper only fits a Zeon Platinum Winch due to no access to the winch controls once on the vehicle.**

SAFETY FIRST!

- FOLLOW ALL INSTRUCTIONS, YOUR SAFETY AND THE SAFETY OF OTHERS IS MOST IMPORTANT.
- WEAR APPROPRIATE EYE PROTECTION AND EXERCISE CAUTION WHEN DRILLING / CUTTING

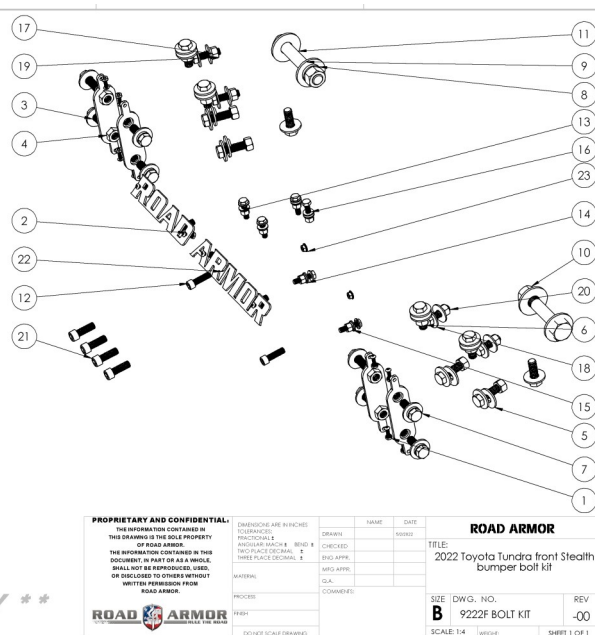
REQUIRED TOOLS

Metric and SAE Socket Sets and Wrenches

Screw Driver Phillips and Flat head

INCLUDED HARDWARE-

ITEM NO.	PART NUMBER	DESCRIPTION	QTY.
1	37407	#10-24 Zinc Finish Steel with External Tooth Lockwasher K-Lock Nut	12
2	73734	#10-24 x 3/4" ASTM A574 Hex Drive Zinc Finish Steel USS General Purpose Flat Washer	18
3	33895	1/2" Yellow Zinc Finish High Alloy Medium Split Lock Washer	12
4	616-DNP	1/2" centered double nut plate	4
5	33861	1/2" x 1.375" OD Thru-Hardened Yellow Zinc Finish Steel USS General Purpose Flat Washer	26
6	36410	1/2"-13 Yellow Zinc Finish Grade 8 Finished Hex Nut	8
7	15209	1/2"-13 x 1-1/2" Grade 8 Yellow Zinc Finish Hex Cap Screw	18
8	33898	3/4" Yellow Zinc Finish High Alloy Medium Split Lock Washer	2
9	33864	3/4" x 2.00" OD Thru-Hardened Yellow Zinc Finish Steel USS General Purpose Flat Washer	4
10	36416	3/4"-10 Yellow Zinc Finish Grade 8 Finished Hex Nut	2
11	15371	3/4"-10 x 4-1/2" Grade 8 Yellow Zinc Finish Hex Cap Screw	2
12	93307	3/8"-16 x 1-1/4" ASTM A574 Hex Drive Zinc Finish Alloy Steel Socket Cap Screw	18
13	1133892	5/16" Yellow Zinc Finish High Alloy Medium Split Lock Washer	6
14	33080	5/16" x 0.688" OD Low Carbon Zinc Finish Steel SA General Purpose Flat Washer	116
15	1336304	5/16"-8 Zinc Finish Grade 5 Finished Hex Nut	12
16	13057	5/16"-18 x 1-1/4" Grade 5 Zinc Finish Hex Cap Screw	6
17	33894	7/16" Yellow Zinc Finish High Alloy Medium Split Lock Washer	4
18	1133860	7/16" x 1.250" OD Thru-Hardened Yellow Zinc Finish Steel USS General Purpose Flat Washer	8
19	1336408	7/16"-14 Yellow Zinc Finish Grade 8 Finished Hex Nut	4
20	011519	7/16"-14 x 1-1/2" Grade 8 Yellow Zinc Finish Hex Cap Screw	4
21	93357	7/16"-14 x 1-1/4" ASTM A574 Hex Drive Zinc Finish Alloy Steel Socket Cap Screw	4
22	Default	Large RA logo	1
23	0162814	M6-1.0 Phos 17mm Finish w/ 5 Sealrings	0.0



**** ROAD ARMOR USE ONLY ****












1 Remove Fender Liner Bolts.

2 Remove Grille Bolts.

3 Remove remaining bolts securing Bumper to Frame.

4 Disconnect 2 plugs from Passenger side and 1 from Driver side.

5 Pull Fender out to be able to pop bumper out.

6 Disconnect Air Dam Motor Plug.

7 Remove Bumper and Grille. Remove Aluminum crash bar and Air Dam Motor.

8 To remove fascia, remove screws and unclip.

4 DS

5

6

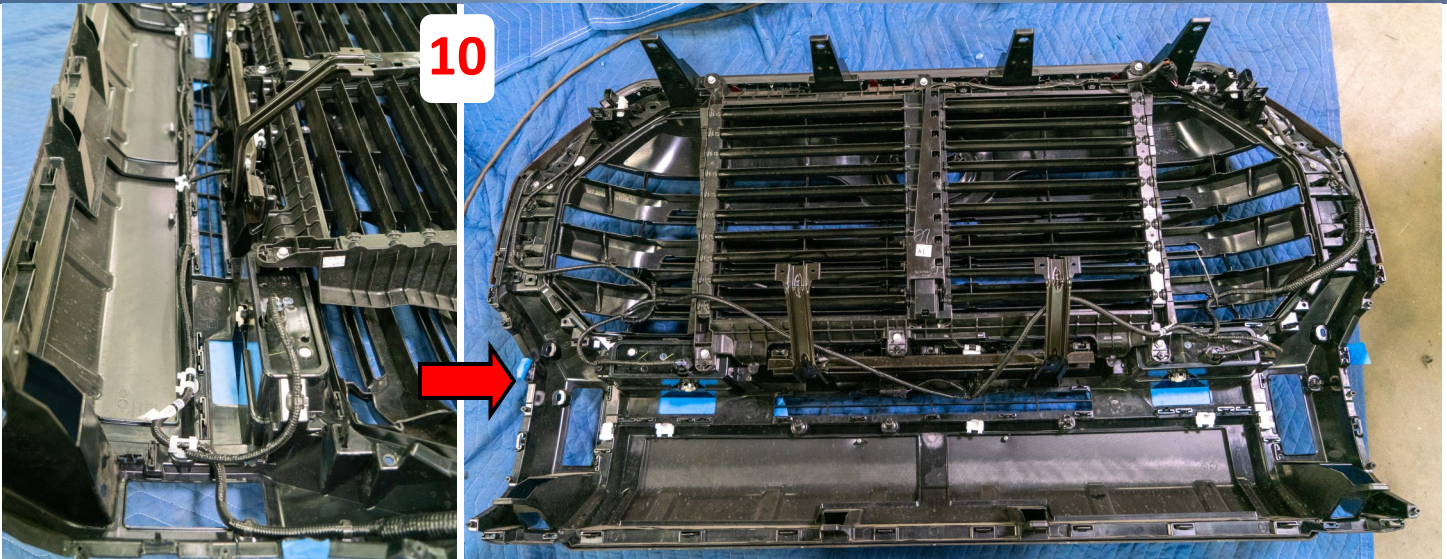
7

8

9

9 Remove end pods by unscrewing.

10 Remove Lower part of Wiring harness so that bumper can be cut.

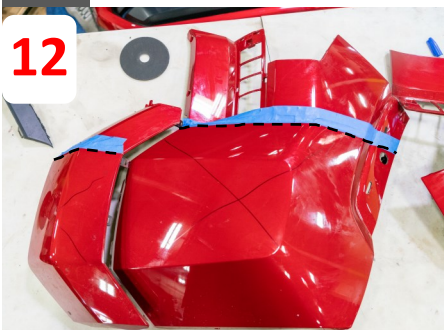


11 Tape along the body lines that are going to be cut (Red Dashed Line). Make sure to cover fog lights so that they do not get damaged.



12 Tape along the body lines that are going to be cut (Black Dashed Line).

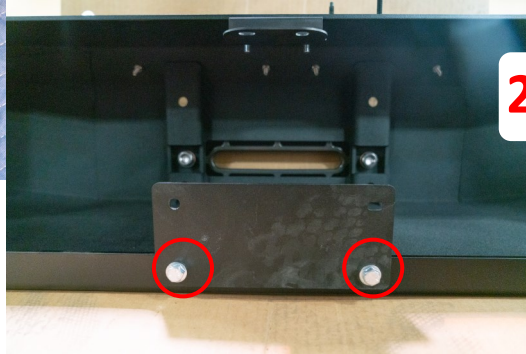
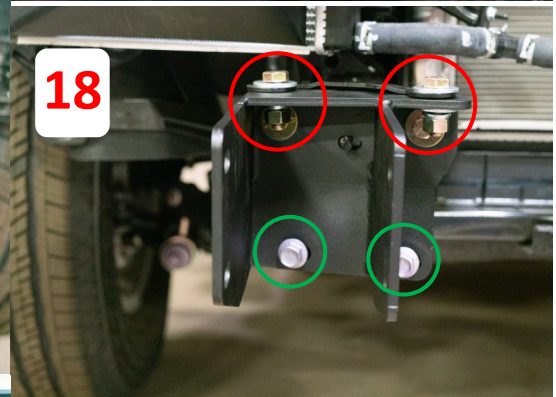
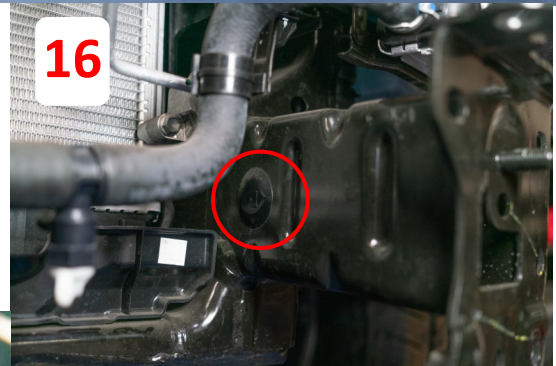
13 Reassemble Grille and Reinstall back onto truck



14 Tape off area of Fender to be cut, lining up with the profile of the previously cut bumper sections.



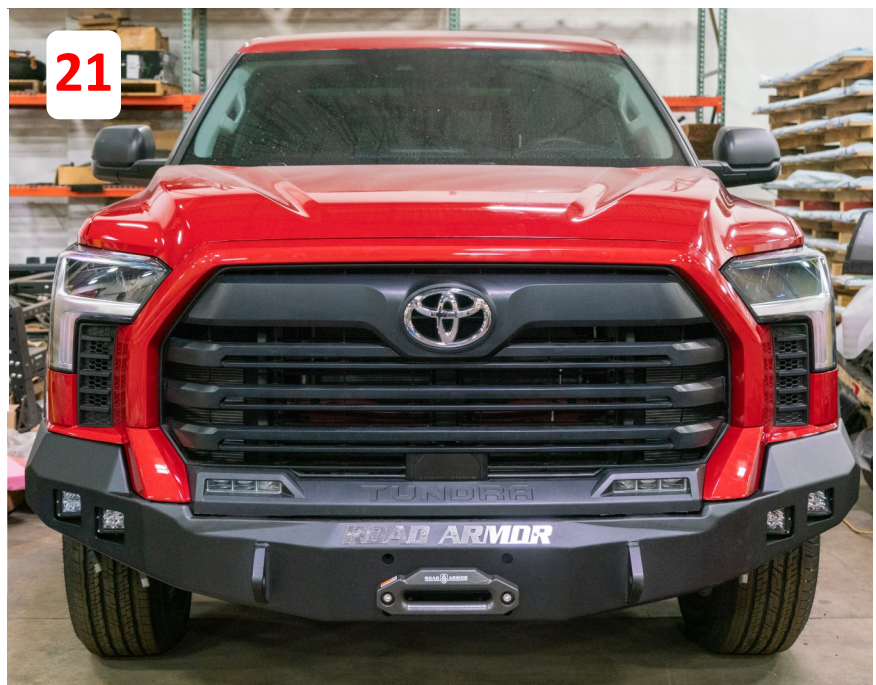
- 15 Driver side Bracket Placement.
- 16 Remove Plug from Frame.
- 17 Insert Single Nut Plate inside of Frame for Frame Stiffener.
- 18 Passenger side Bracket install. Factory Hardware (Green).
Provided Hardware (Red).



- 19 Install all lights, fairlead, and winch at this time.

- 20 Install Top and Bottom Air Dam Brackets.

- 21 Install Bumper onto Truck leaving all bolts hand tight. Adjust up, down, left, right, and tilt to the desired fitting and then tighten all bolts.



FINISHED