

# INSTALL INSTRUCTIONS

## Brush Guard

Product : 6232-BRSH

Application : 2017+ Ford Super Duty

## I WARNING

Read the instructions completely before beginning installation. Before tightening bolts, drilling or cutting where required, check to make sure there are no obstructions such as brake, fuel or electrical lines which may be damaged. Also keep in mind this is an after-market product and MAY require minor shimming and/or trimming, reaming, etc. for proper fit. Road Armor is not responsible for any damages to vehicle.

## i IMPORTANT NOTICE

- Be sure to inspect and test fit your product to ensure proper fitment before having it coated, painted, bed lined, etc.
- Road Armor will not be responsible for the cost of coating your unit if any problems with fit or finish are not

## SAFETY FIRST!

- FOLLOW ALL INSTRUCTIONS, YOUR SAFETY AND THE SAFETY OF OTHERS IS MOST IMPORTANT.
- WEAR APPROPRIATE EYE PROTECTION AND EXERCISE CAUTION WHEN DRILLING / CUTTING

## REQUIRED TOOLS

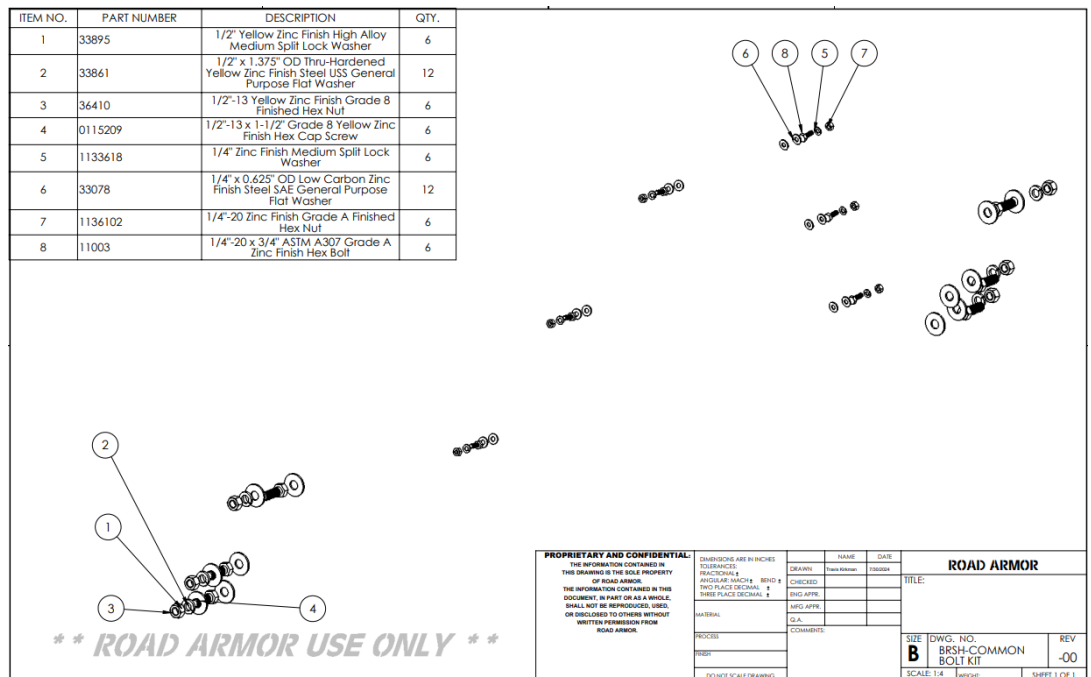
SAE & METRIC Socket set and wrenches  
Screw drivers, pry tool, pick tool, pliers

## RECOMMENDED TOOLS

Adjustable Table Cart / Table/Pallet Lift or Hoist  
Impact driver

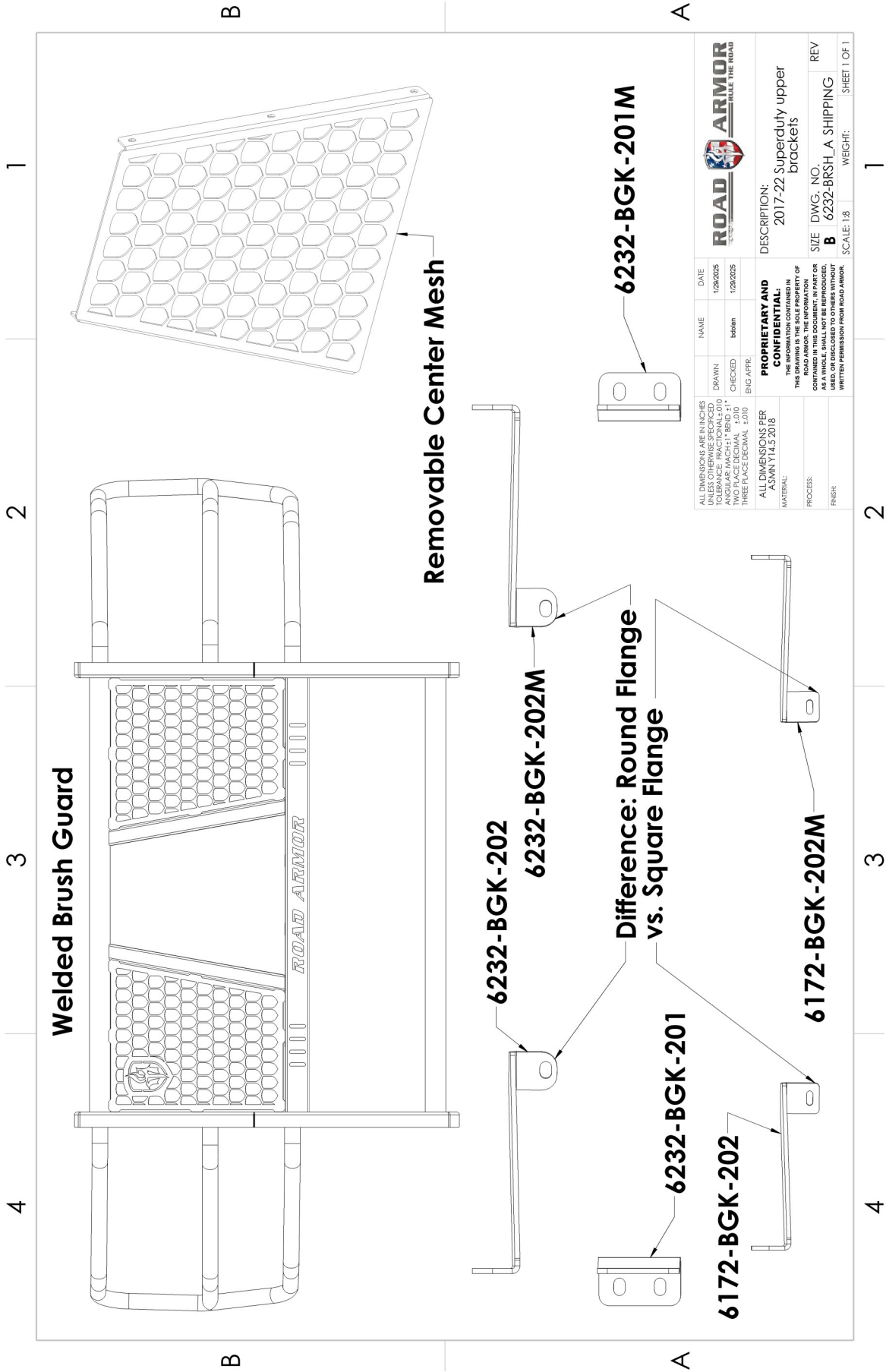
## INCLUDED HARDWARE

ITEM NO.	PART NUMBER	DESCRIPTION	QTY.
1	33895	1/2" Yellow Zinc Finish High Alloy Medium Split Lock Washer	6
2	33861	1/2" x 1.375" OD Thru-Hardened Yellow Zinc Finish Steel USS General Purpose Flat Washer	12
3	36410	1/2"-13 Yellow Zinc Finish Grade 8 Finished Hex Nut	6
4	0115209	1/2"-13 x 1-1/2" Grade 8 Yellow Zinc Finish Hex Cap Screw	6
5	1133618	1/4" Zinc Finish Medium Split Lock Washer	6
6	33078	1/4" x 0.625" OD Low Carbon Zinc Finish Steel SAE General Purpose Flat Washer	12
7	1136102	1/4"-20 Zinc Finish Grade A Finished Hex Nut	6
8	11003	1/4"-20 x 3/4" ASTM A307 Grade A Zinc Finish Hex Bolt	6



**\*\* ROAD ARMOR USE ONLY \*\***

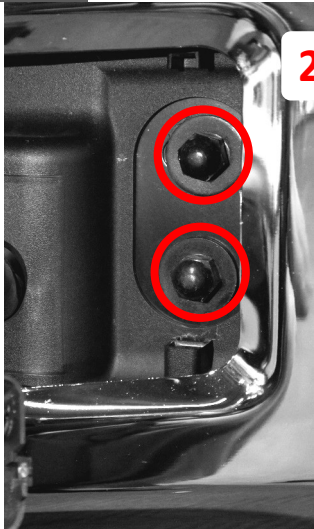
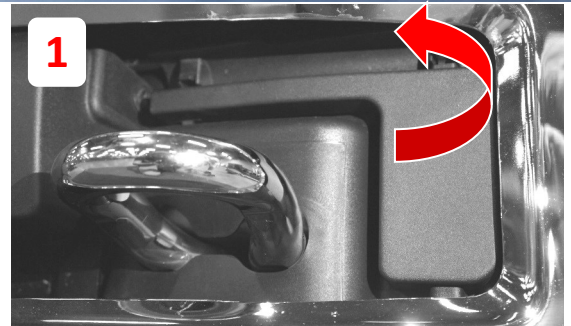
<b>PROPRIETARY AND CONFIDENTIAL</b> THE INFORMATION CONTAINED IN THIS DRAWING IS THE SOLE PROPERTY OF ROAD ARMOR. THE INFORMATION CONTAINED IN THIS DOCUMENT, IN PART OR AS A WHOLE, SHALL NOT BE REPRODUCED, USED, OR DISCLOSED TO OTHERS WITHOUT WRITTEN PERMISSION FROM ROAD ARMOR.		UNLESS NOTED OTHERWISE IN THIS DRAWING, DIMENSIONS ARE IN INCHES UNLESS OTHERWISE SPECIFIED. DIMENSIONS IN PARENTHESIS ARE IN METRIC. DIMENSIONS IN METRIC SHALL BE TO THREE PLACE DECIMAL.	DATE: _____ DRAWN BY: _____ CHECKED BY: _____ INFO APPR: _____ DATE: _____ COMMENTS: _____	NAME: _____ DATE: _____	<b>ROAD ARMOR</b>
REVISED: _____ REVISION: _____ DATE: _____ SCALE: 1:4	DO NOT SCALE DRAWING	SCALE: 1:4	HEIGHT: _____	SHEET 1 OF 1	DWG. NO. BRSH-COMMON BOLT KIT REV -00 SCALE: 1:4



ALL DIMENSIONS ARE IN INCHES UNLESS OTHERWISE SPECIFIED. ANGULAR: MACH ±1° BEND ±1° TWO PLACE DECIMAL ±0.01 THREE PLACE DECIMAL ±0.01	NAME	DATE	DESCRIPTION
	bobbin	1/29/2025	2017-22 Superduty upper brackets
	ENG APPR.		
<b>PROPRIETARY AND CONFIDENTIAL:</b>			
THIS DRAWING IS THE SOLE PROPERTY OF ROAD ARMOR. IT IS TO BE USED AS A WHOLE, SHALL NOT BE REPRODUCED, COPIED, OR DISCLOSED TO OTHERS WITHOUT WRITTEN PERMISSION FROM ROAD ARMOR.			
MATERIAL:	PROCESS:	FINISH:	SCALE: 1:8
ALL DIMENSIONS PER ASMN Y14.5 2018			WEIGHT: 1
			SHEET 1 OF 1

**1** Remove plastic trim around tow hooks to reveal bolts on both Driver and Passenger sides.

**2** Remove the 2 outer bolts per tow hook



**Factory Hardware**



**3** Fit up mounting bracket over the 2 slots where the bolts were removed as shown. (Both Sides) Reinstall the factory hardware to mount the bracket to the truck.

**4** Remove Grille to install upper brackets. Trimming may be required on the Top Center Plastic piece for better fitment.



**Grille  
Removed**



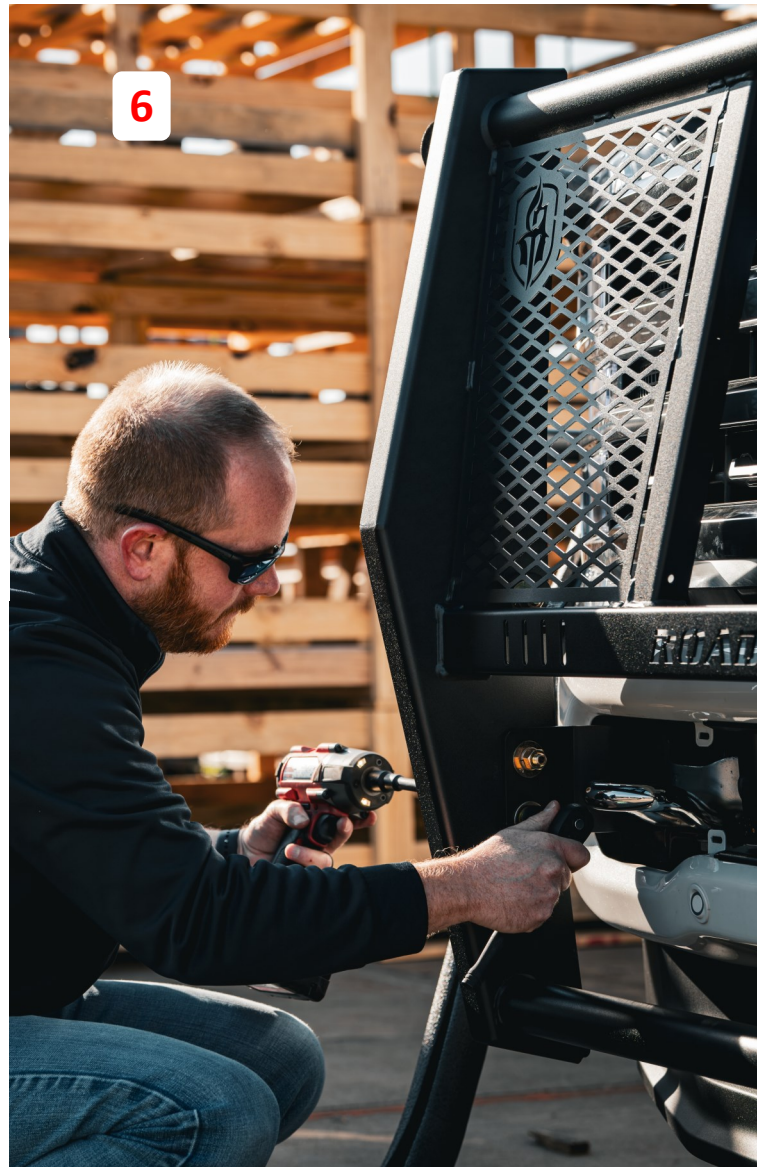


**5** Once Brackets are installed, the plastic covers around the tow hooks can be reinstalled. (Trimming may be required)

**6** Fit up brush guard to brackets and affix using included hardware. Do not tighten fully to allow for adjustments.

**7** Check the clearance and once the brush guard is in desired location fully tighten all hardware.

**8** If vehicle is equipped with a Front Camera, the Center Mesh is removable.



**Finished**

