



INSTALL INSTRUCTIONS

Front Stealth Bumper

Product : 6211F0B, 6211F3B, 6211F4B, 6211F5B

Application : 2021+ Ford F-150

(WINCH and NON-WINCH)

I WARNING

Read the instructions completely before beginning installation. Before tightening bolts, drilling or cutting where required, check to make sure there are no obstructions such as brake, fuel or electrical lines which may be damaged. Also keep in mind this is an after-market product and MAY require minor shimming and/or trimming, reaming, etc. for proper fit. Road Armor is not responsible for any damages to vehicle.

IMPORTANT NOTICE

- Be sure to inspect and test fit your product to ensure proper fitment before having it coated, painted, bed lined, etc.
- Road Armor will not be responsible for the cost of coating your unit if any problems with fit or finish are not noted and addressed beforehand.

SAFETY FIRST!

- FOLLOW ALL INSTRUCTIONS, YOUR SAFETY AND THE SAFETY OF OTHERS IS MOST IMPORTANT.
- WEAR APPROPRIATE EYE PROTECTION AND EXERCISE CAUTION WHEN DRILLING / CUTTING

REQUIRED TOOLS

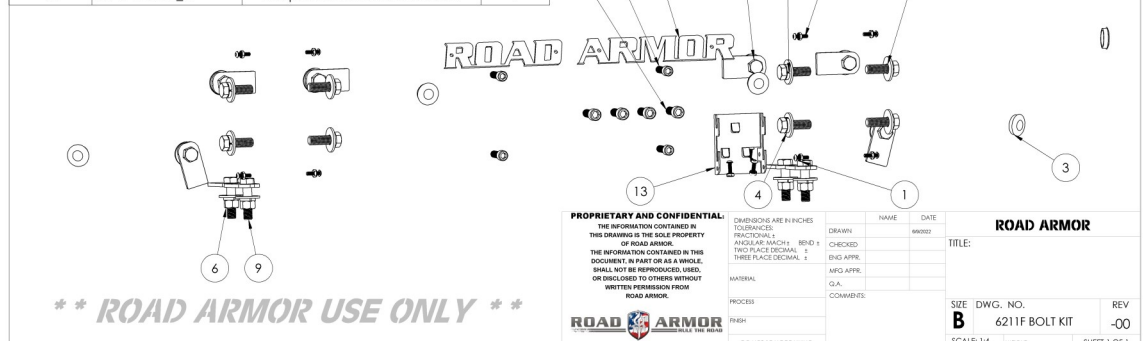
Metric and SAE Socket Sets and Wrenches

Small Pry Bar or Large Flathead Screwdriver

Needle Nose Pliers

INCLUDED HARDWARE

ITEM NO.	PART NUMBER	DESCRIPTION	QTY.
1	37407	#10-24 Zinc Finish Steel with External Tooth Lockwasher K-Lock Nut	15
2	73734	#10-24 x 3/4" ASTM F879 Hex Drive Grade 18-8 Stainless Steel Button Socket Cap Screw	11
3	1.125 inch plug	1 1/8" Dome plug	6
4	33895	1/2" Yellow Zinc Finish High Alloy Medium Split Lock Washer	18
5	33861	1/2" x 1.375" OD Thru-Hardened Yellow Zinc Finish Steel USS General Purpose Flat Washer	18
6	36410	1/2"-13 Yellow Zinc Finish Grade 8 Finished Hex Nut	10
7	15209	1/2"-13 x 1-1/2" Grade 8 Yellow Zinc Finish Hex Cap Screw	8
8	11218-05078	1.5" Single Bolt Tab (ZINC)	6
9	11218-05079	2" SINGLE BOLT TAB (ZINC)	4
10	93307	3/8"-16 x 1-1/4" ASTM A574 Hex Drive Zinc Finish Alloy Steel Socket Cap Screw	4
11	93357	7/16"-14 x 1-1/4" ASTM A574 Hex Drive Zinc Finish Alloy Steel Socket Cap Screw	4
12	raletters	Large RA logo	1
13	6211F-ACM-2_A	Adaptive cruise control bracket	1



1 Remove the plastic cover from top of grille.

2 Remove the Front Facia.

2

1

3

Remove the grille making sure camera and plugs are disconnected.

3

4 With Grille and Fascia gone... Remove the top bolts for the factory bumper along with the rest of the plugs. Remove bolts connecting bumper to the Frame. Remove Bumper.

4

5

5 Remove factory tow hooks and crash bar from both sides.

6 If equipped, remove shutter system and leave the motor unplugged.

7 If equipped, remove Noise Maker and Bracket. Then, zip tie noise maker to the frame.

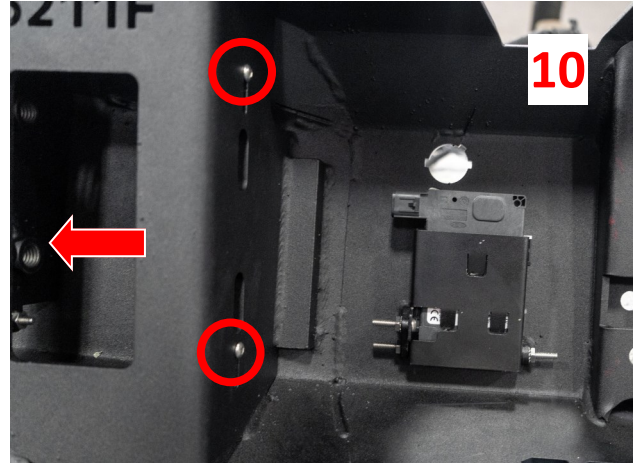
8 Remove Rubber Trim on Factory Bumper (Careful not to break the tabs). Remove Sensors and Wiring Harness. Remove ACM if equipped.

6

7

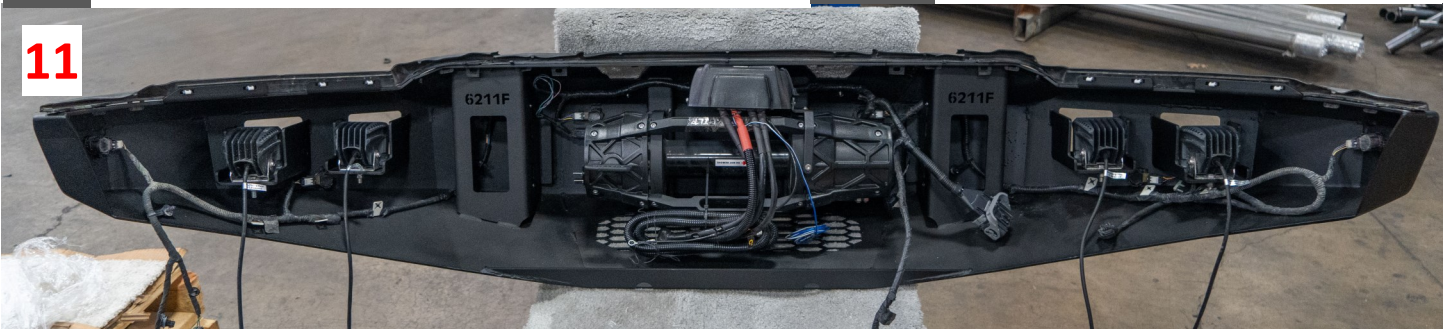


- 9** Mount Frame Brackets as shown keeping all nuts loose so that the Bumper can adjust left to right.
- 10** Mount all double nut plates on the inside of the weld in brackets (Keep Nuts loose so that bumper can adjust up and down). Mount ACM if equipped. Mount Road Armor Logo.

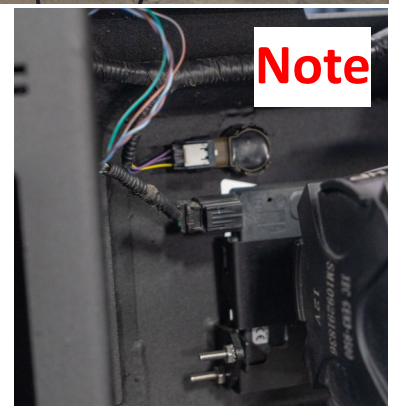


- 11** Install Factory Rubber Trim onto Stealth Bumper. Install Lights, Sensors, and Wiring Harness. Install Winch and Fairlead if applicable. Easier if Fairlead Bolts go from inside bumper to outside.

Note Note: If ACM plug will not reach, there is extra wiring in the wire loom



Finished



Note

- 12** Mount Bumper onto Truck. Keeping all nuts loose until desired up/down/left/right is achieved then tighten all nuts and bolts.