



INSTALL INSTRUCTIONS

Rear Stealth Bumper

Product : 6211ER0B

Application : 2021+ Ford F-150

I WARNING

Read the instructions completely before beginning installation. Before tightening bolts, drilling or cutting where required, check to make sure there are no obstructions such as brake, fuel or electrical lines which may be damaged. Also keep in mind this is an after-market product and MAY require minor shimming and/or trimming, reaming, etc. for proper fit. Road Armor is not responsible for any damages to vehicle.

IMPORTANT NOTICE

- Be sure to inspect and test fit your product to ensure proper fitment before having it coated, painted, bed lined, etc.
- Road Armor will not be responsible for the cost of coating your unit if any problems with fit or finish are not noted and addressed beforehand.

SAFETY FIRST!

- FOLLOW ALL INSTRUCTIONS, YOUR SAFETY AND THE SAFETY OF OTHERS IS MOST IMPORTANT.
- WEAR APPROPRIATE EYE PROTECTION AND EXERCISE CAUTION WHEN DRILLING / CUTTING

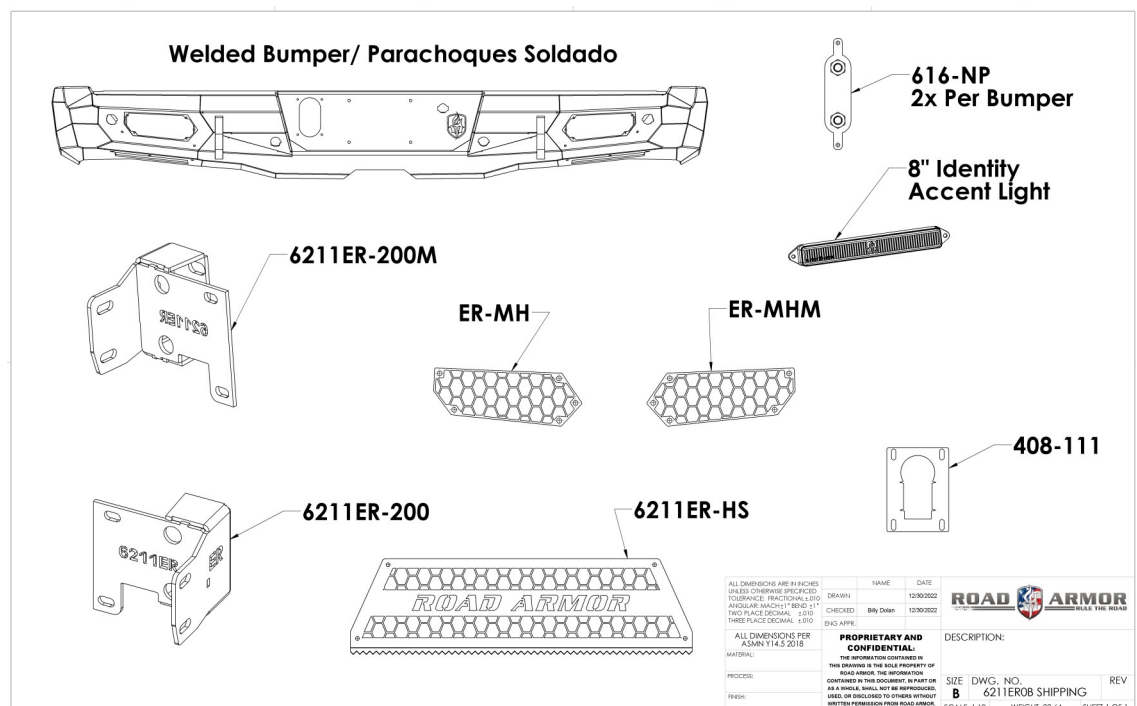
REQUIRED TOOLS

Metric and SAE Socket Sets and Wrenches

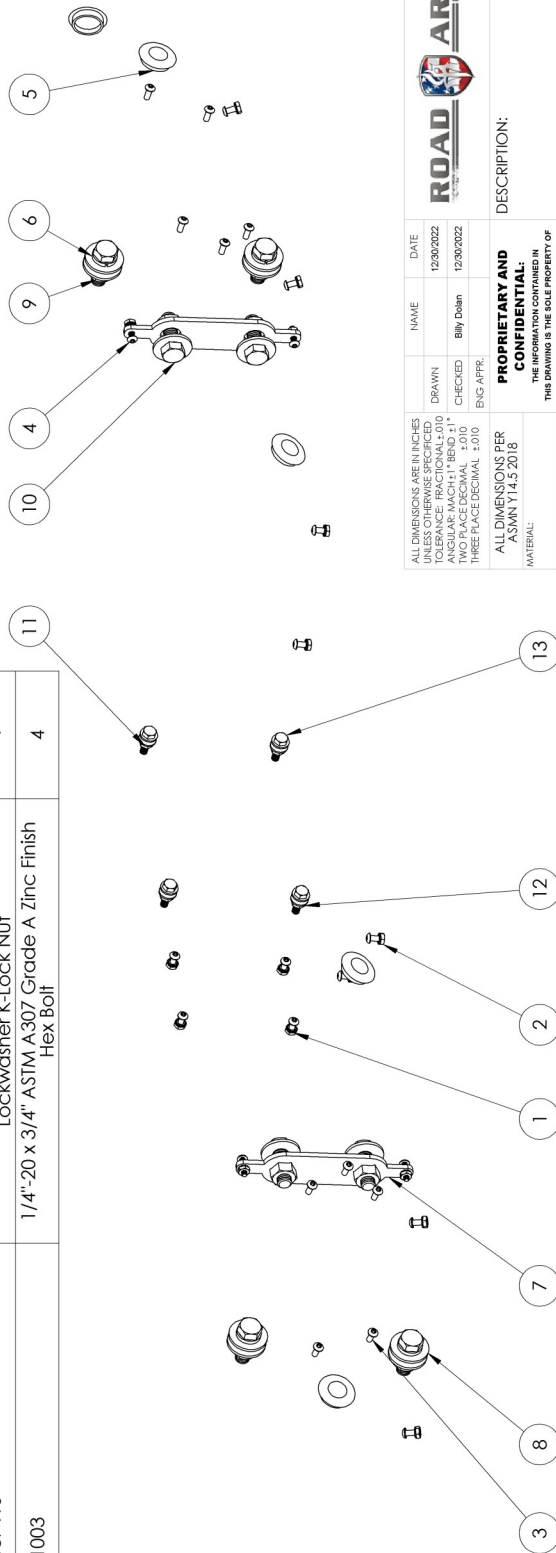
Tape Measure

Cut off wheel

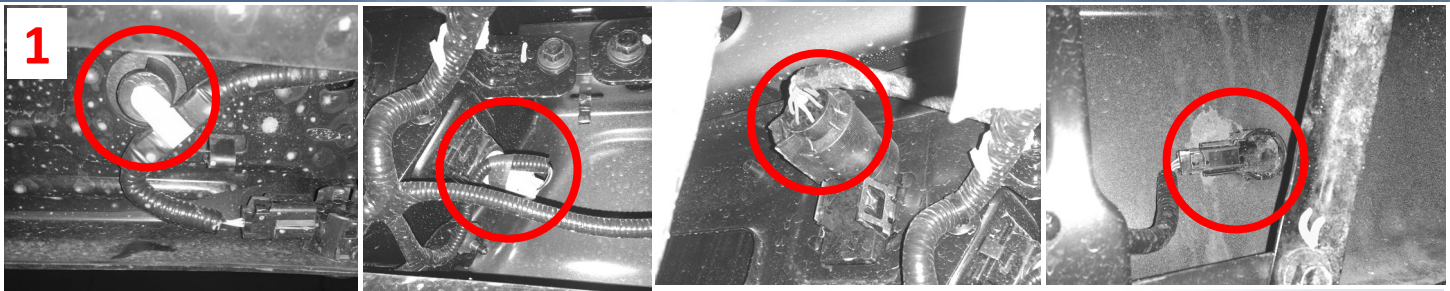
INCLUDED PARTS



ITEM NO.	PART NUMBER	DESCRIPTION	QTY.
1	37407	# 10-24 Zinc Finish Steel with External Tooth Lockwasher K-Lock Nut	8
2	37407	# 10-24 Zinc Finish Steel with External Tooth Lockwasher K-Lock Nut	8
3	73732	# 10-24 x 1/2" ASTM F879 Hex Drive 18-8 Stainless Steel Button Socket Cap Screw	22
4	73734	# 10-24 x 3/4" ASTM F879 Hex Drive Grade 18-8 Stainless Steel Button Socket Cap Screw	4
5	1.09 inch plug	1 1/16" Dome plug	6
6	33895	1/2" Yellow Zinc Finish High Alloy Medium Split Lock Washer	4
7	616-DNP	1/2" centered double nut plate	2
8	33861	1/2" x 1.375" OD Thru-Hardened Yellow Zinc Finish USS General Purpose Flat Washer	12
9	36410	1/2"-13 Yellow Zinc Finish Grade 8 Finished Hex Nut	4
10	15209	1/2"-13 x 1-1/2" Grade 8 Yellow Zinc Finish Hex Cap Screw	8
11	33078	1/4" x 0.625" OD Low Carbon Zinc Finish Steel SAE General Purpose Flat Washer	8
12	1137410	1/4"-20 Zinc Finish Steel with External Tooth Lockwasher K-Lock Nut	4
13	11003	1/4"-20 x 3/4" ASTM A307 Grade A Zinc Finish Hex Bolt	4



		ROAD ARMOR RULE THE ROAD	
DATE	12/30/2022	NAME	Billy Doan
DRAWN		CHECKED	Billy Doan
ALL DIMENSIONS ARE IN INCHES UNLESS OTHERWISE SPECIFIED	1/16" = 0.0625" ANGULAR MATCH 1:1 BEND 1:10 TWO PLACE DECIMAL 1:10 THREE PLACE DECIMAL 1:10	ENG APPR.	
PROPRIETARY AND CONFIDENTIAL: THE INFORMATION CONTAINED IN THIS DOCUMENT IS THE PROPERTY OF ROAD ARMOR. THE INFORMATION CONTAINED IN THIS DOCUMENT, IN PART OR AS A WHOLE, SHALL NOT BE REPRODUCED, COPIED, OR TRANSMITTED IN ANY FORM OR BY ANY MEANS WITHOUT THE WRITTEN PERMISSION FROM ROAD ARMOR.			
ALL DIMENSIONS PER ASME Y14.5 2018		DESCRIPTION: 6211ER-BOLTKIT	
MATERIAL: PROCESS: FINISH:		SIZE B	DWG. NO. 6211ER-BOLTKIT
		SCALE: 1:12	WEIGHT: 0.40
		SHEET 1 OF 1	



1 Remove sensors and Plugs from factory bumper. Leave Wiring Harness connected to Hitch.

2 Remove 5 bolts per side as shown

3 Using a ratcheting wrench ideally, remove bolts next to license plate lights

4 There are 4 tabs that need to be pushed through bracket to remove the bumper

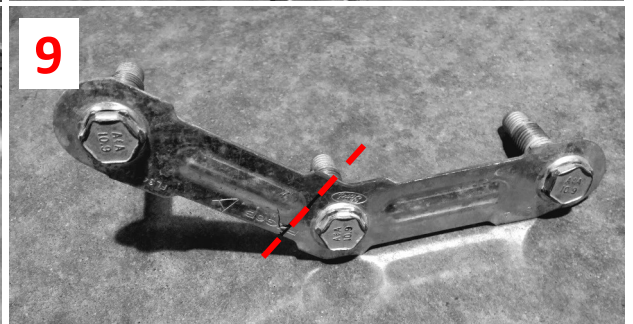
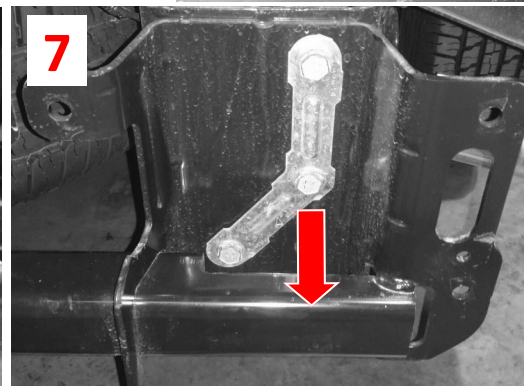
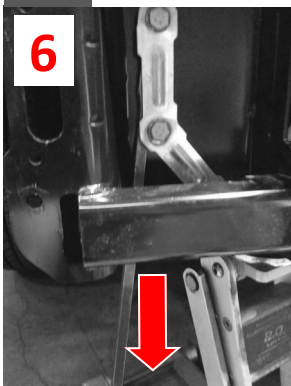
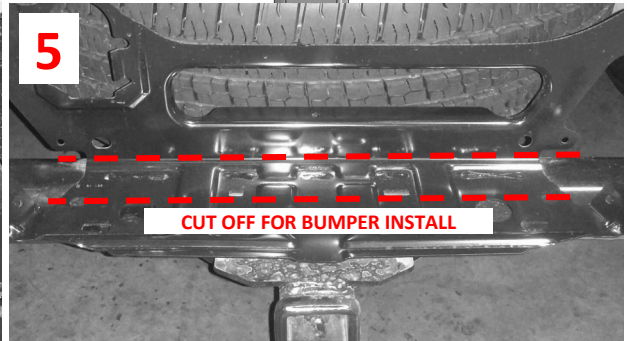
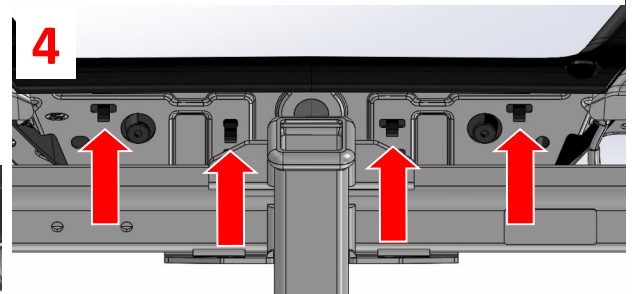
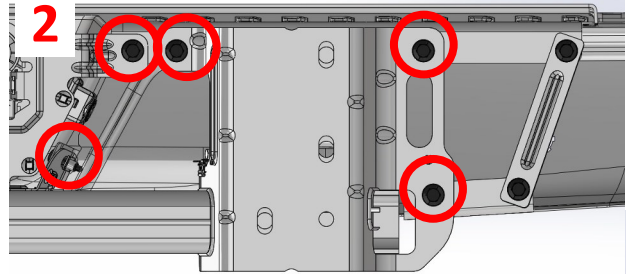
5 Trim bracket on receiver hitch. Both Upper and Lower trim is necessary for bumper installation.

6 Use a jack to support receiver hitch.

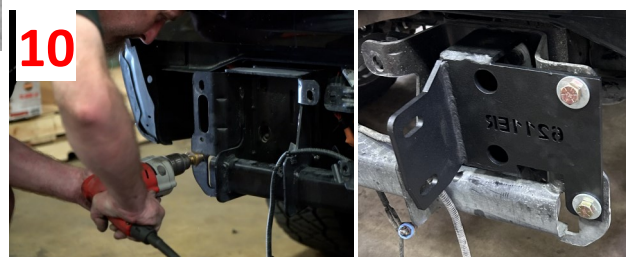
7 Retainer washers are holding the three bolt tabs and must be hammered out

8 Remove OEM Triple Nut Plate one side at a time.

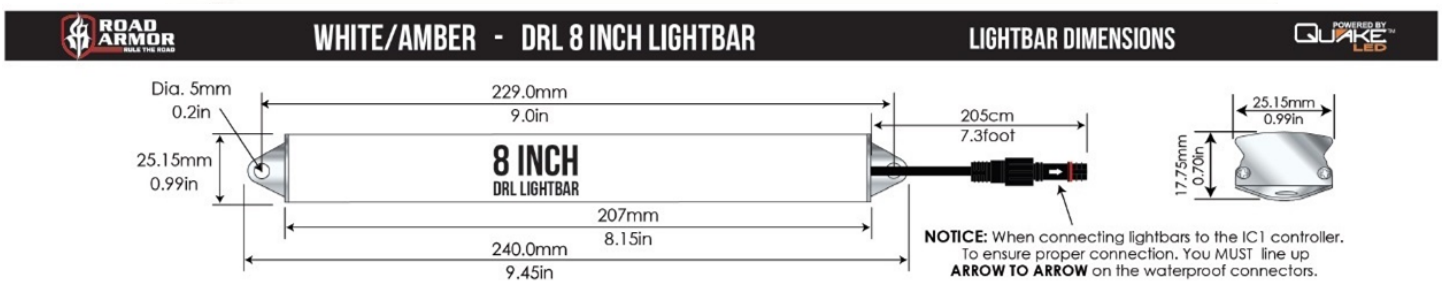
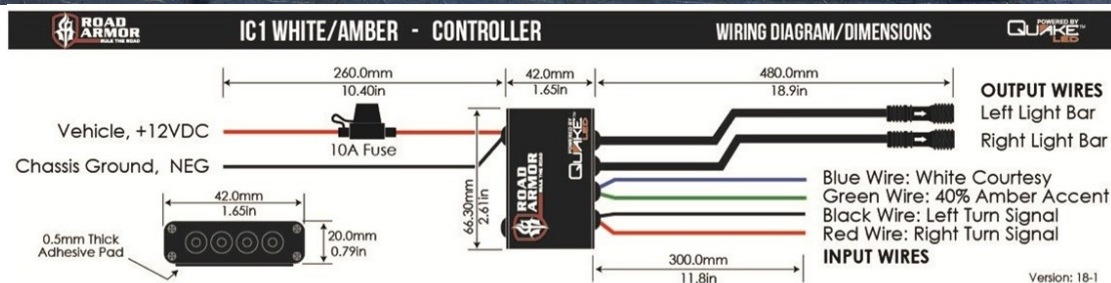
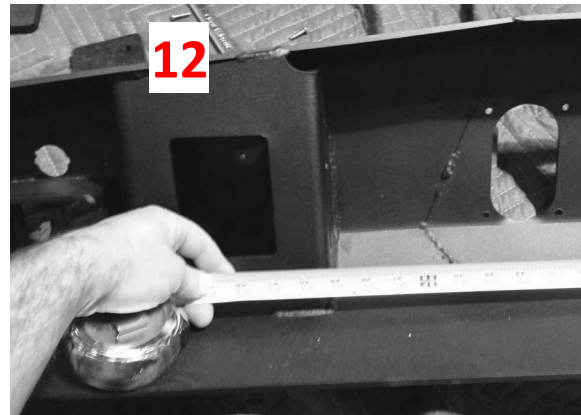
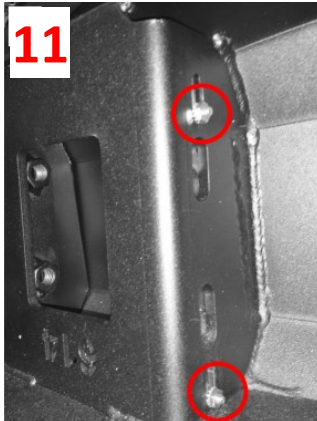
9 Cut OEM Triple Nut Plate as shown. Repeat Step for Both Sides



10 Install Road Armor bracket one side at a time using the now Double Bolt Tabs in bracket, Single Bolt Tabs through outer mount and the included 1/2" hardware. Outer holes may need to be drilled to 1/2" , if this is necessary be sure to paint.



- 11** Install Double Nut Plates, Hitch Plate, Accent Lights, License Plate Lights, Spare Tire Lock, License Plate, Step Plate, and Cube Lights.
- 12** Measure inside to inside of Weld in Brackets on bumper and adjust Frame Brackets if needed.
- 13** Install bumper using supplied 1/2" hardware checking bumper alignment and tighten down. Once Tight, Connect All sensors and Lights.





Finished

