



# INSTALL INSTRUCTIONS

## Front Evolution Bumper

Product : 6211EF0B, 6211EF3B, 6211EF7B

Application : 2021+ Ford F-150

## I WARNING

Read the instructions completely before beginning installation. Before tightening bolts, drilling or cutting where required, check to make sure there are no obstructions such as brake, fuel or electrical lines which may be damaged. Also keep in mind this is an after-market product and MAY require minor shimming and/or trimming, reaming, etc. for proper fit. Road Armor is not responsible for any damages to vehicle.

## ❗ IMPORTANT NOTICE

- Be sure to inspect and test fit your product to ensure proper fitment before having it coated, painted, bed lined, etc.
- Road Armor will not be responsible for the cost of coating your unit if any problems with fit or finish are not noted and addressed beforehand.

## SAFETY FIRST!

- FOLLOW ALL INSTRUCTIONS, YOUR SAFETY AND THE SAFETY OF OTHERS IS MOST IMPORTANT.
- WEAR APPROPRIATE EYE PROTECTION AND EXERCISE CAUTION WHEN DRILLING / CUTTING

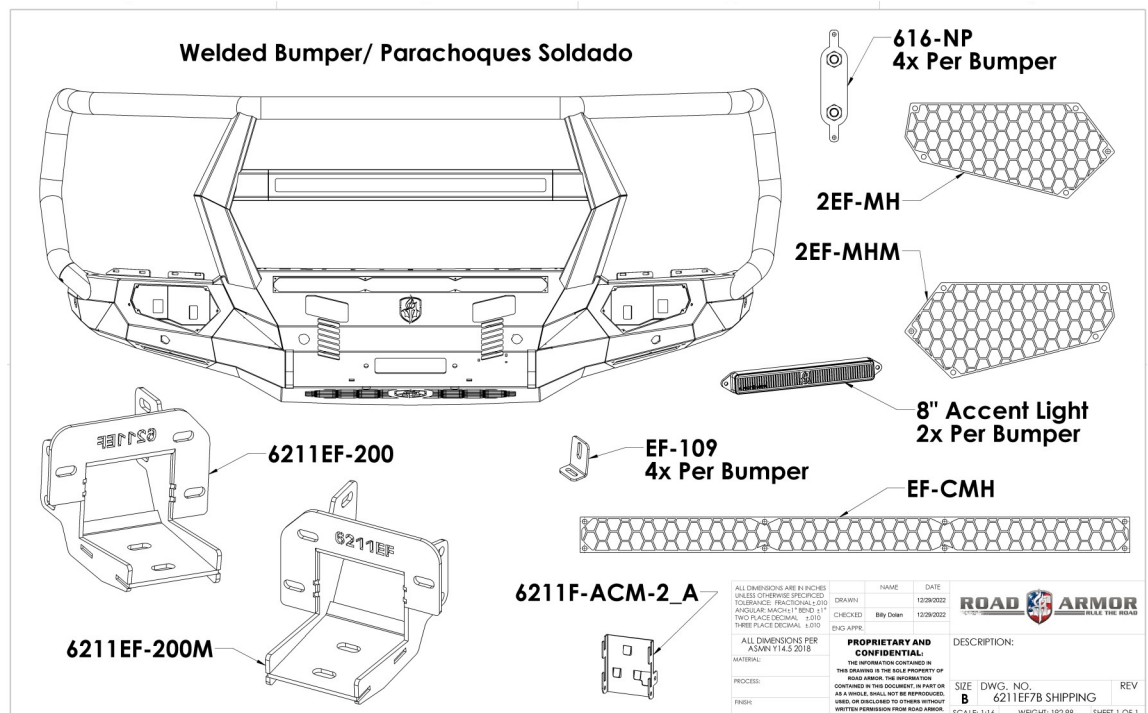
## REQUIRED TOOLS

Metric and SAE Socket Sets and Wrenches

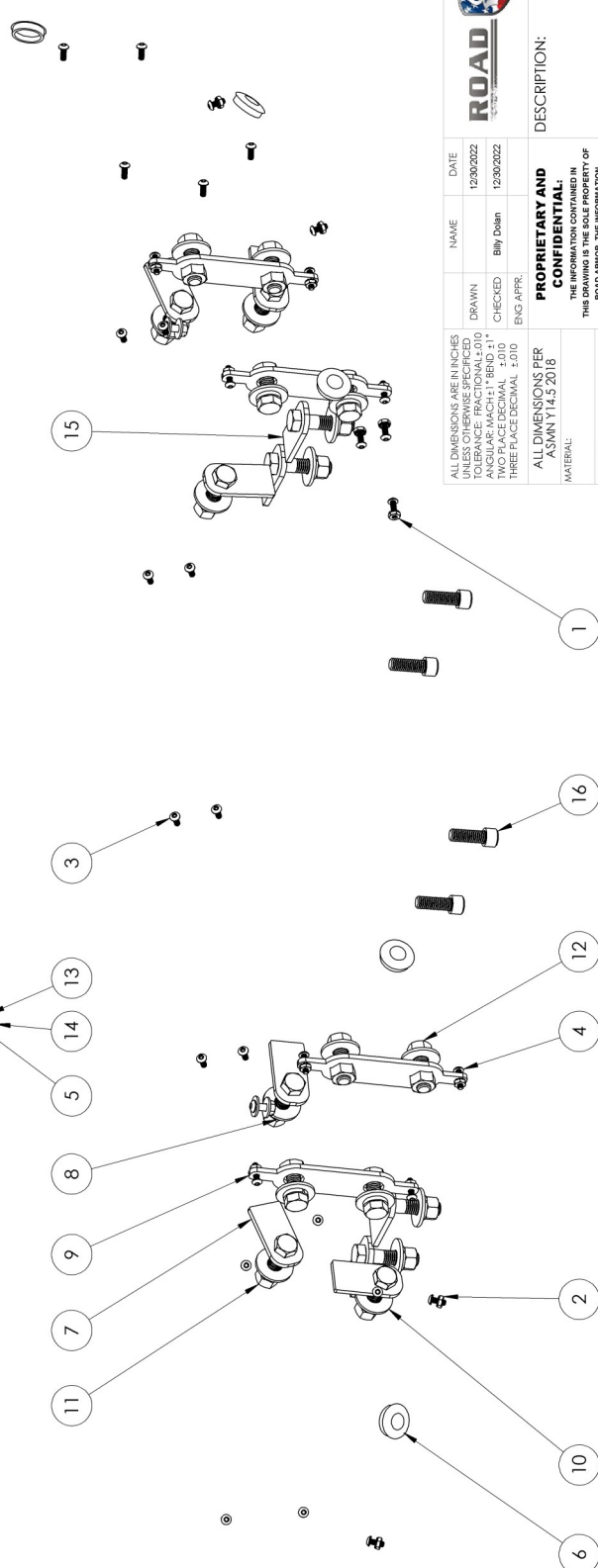
Small Pry Bar or Large Flathead Screwdriver

Needle Nose Pliers

## INCLUDED PARTS



ITEM NO.	PART NUMBER	DESCRIPTION	QTY.
1	37407	# 10-24 Zinc Finish Steel with External Tooth Lockwasher K-Lock Nut	3
2	37407	# 10-24 Zinc Finish Steel with External Tooth Lockwasher K-Lock Nut	12
3	94030	# 10-24 x 1/2" ASTM F835 Hex Drive Zinc Finish Alloy Steel Button Socket Cap Screw	25
4	73734	# 10-24 x 3/4" ASTM F879 Hex Drive Grade 18-8 Stainless Steel Button Socket Cap Screw	8
5	94051	1/4" x 20 x 3/4" ASTM F835 Hex Drive Zinc Finish Alloy Steel Button Socket Cap Screw	4
6	1.125 inch plug	1 1/8" Dome plug	6
7	11218-05078	1.5" Single Bolt Tab (ZINC)	6
8	33895	1/2" Yellow Zinc Finish High Alloy Medium Split Lock Washer	18
9	616-DNP	1/2" centered double nut plate	4
10	33861	1/2" x 1.375" OD Thru-Hardened Yellow Zinc Finish Steel USS General Purpose Flat Washer	18
11	36410	1/2"-13 Yellow Zinc Finish Grade 8 Finished Hex Nut	10
12	15209	1/2"-13 x 1-1/2" Grade 8 Yellow Zinc Finish Hex Cap Screw	8
13	33004	1/4" x 0.734" OD Low Carbon Zinc Finish Steel USS General Purpose Flat Washer	8
14	1136102	1/4"-20 Zinc Finish Grade A Finished Hex Nut	4
15	11218-05079	2" SINGLE BOLT TAB (ZINC)	4
16	93357	7/16"-14 x 1-1/4" ASTM A574 Hex Drive Zinc Finish Alloy Steel Socket Cap Screw	4



ALL DIMENSIONS ARE IN INCHES  
 UNLESS OTHERWISE SPECIFIED  
 ANGULAR: MACH ±1° BEND ±1°  
 TWO PLACE DECIMAL ±0.01  
 THREE PLACE DECIMAL ±0.005  
 ENG APPR.

DATE: 12/30/2022  
 NAME: Billy Dolan  
 DRAWN: 12/30/2022  
 CHECKED: 12/30/2022

PROPRIETARY AND CONFIDENTIAL  
 THIS DRAWING IS THE SOLE PROPERTY OF ROAD ARMOR. THE INFORMATION CONTAINED IN THIS DOCUMENT, IN PART OR IN WHOLE, IS NOT TO BE REPRODUCED, COPIED, OR DISCLOSED TO OTHERS WITHOUT WRITTEN PERMISSION FROM ROAD ARMOR.

DESCRIPTION:

SIZE: B DWG. NO. 6211EF-BOLTKIT  
 REV: B  
 SCALE: 1:12 WEIGHT: 1.00 SHEET 1 OF 1



**1** Remove the plastic cover from top of grille.

**2** Remove the Front Facia.

**2**

**1**

**3**

Remove the grille making sure camera and plugs are disconnected.

**3**

**4** With Grille and Fascia gone... Remove the top bolts for the factory bumper along with the rest of the plugs. Remove bolts connecting bumper to the Frame. Remove Bumper.

**4**

**5** Remove factory tow hooks and crash bar from both sides.

**6** If equipped, remove shutter system and leave the motor unplugged.

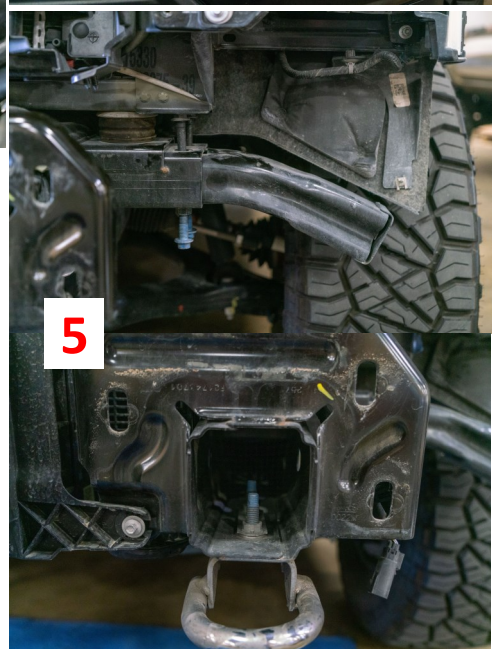
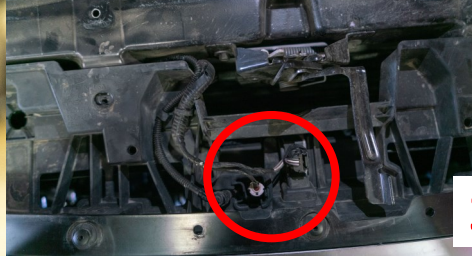
**7** If equipped, remove Noise Maker and Bracket. Then, bolt noise maker to the frame.

**8** Remove Rubber Trim on Factory Bumper (Careful not to break the tabs). Remove Sensors and Wiring Harness. Remove ACM if equipped.

**6**

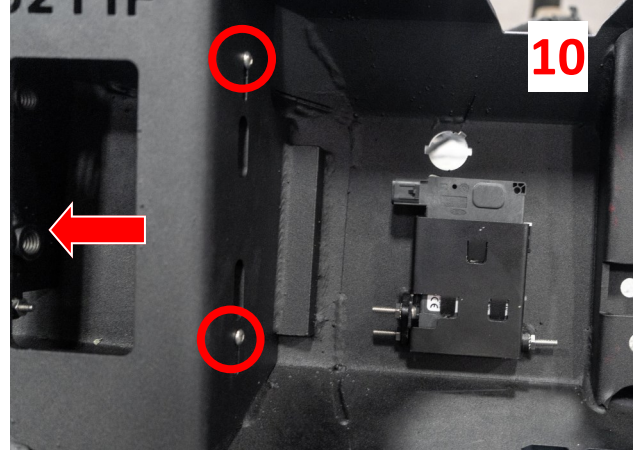
**5**

**7**





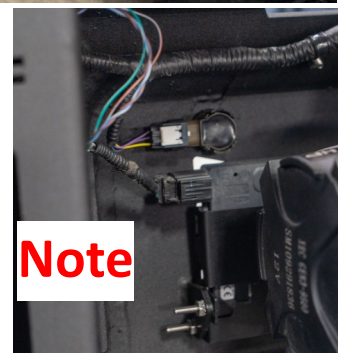
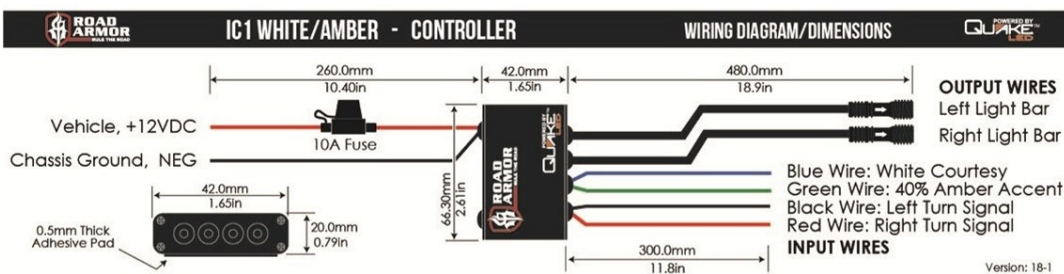
- 9 Mount Frame Brackets as shown keeping all nuts loose so that the Bumper can adjust left to right.
- 10 Mount all double nut plates on the inside of the weld in brackets (Keep Nuts loose so that bumper can adjust up and down). Mount ACM if equipped.



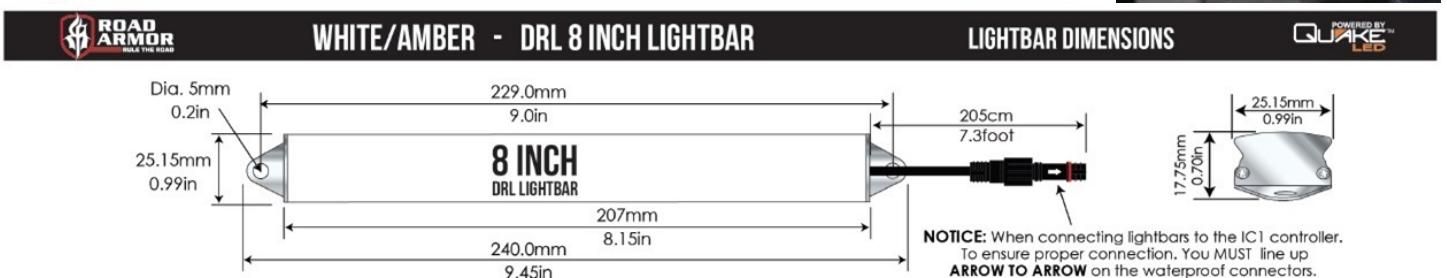
- 11 Install Factory Rubber Trim onto Evolution Bumper. Install Lights, Sensors, Wiring Harness, Winch, and Fairlead.

- 12 Mount Bumper onto Truck. Keeping all nuts loose until desired up/down/left/right is achieved then tighten all nuts and bolts.

**Note** Note: If ACM plug will not reach, there is extra wiring in the wire loom



**Note**







**Finished**

