



INSTALL INSTRUCTIONS

Brush Guard

Product : 6211-BRSH

Application : 2021+ Ford F-150

I WARNING

Read the instructions completely before beginning installation. Before tightening bolts, drilling or cutting where required, check to make sure there are no obstructions such as brake, fuel or electrical lines which may be damaged. Also keep in mind this is an after-market product and **MAY** require minor shimming and/or trimming, reaming, etc. for proper fit. Road Armor is not responsible for any damages to vehicle.

i IMPORTANT NOTICE

- Be sure to inspect and test fit your product to ensure proper fitment before having it coated, painted, bed lined, etc.
- Road Armor will not be responsible for the cost of coating your unit if any problems with fit or finish are not addressed beforehand.

SAFETY FIRST!

- FOLLOW ALL INSTRUCTIONS, YOUR SAFETY AND THE SAFETY OF OTHERS IS MOST IMPORTANT.
- WEAR APPROPRIATE EYE PROTECTION AND EXERCISE CAUTION WHEN DRILLING / CUTTING

REQUIRED TOOLS

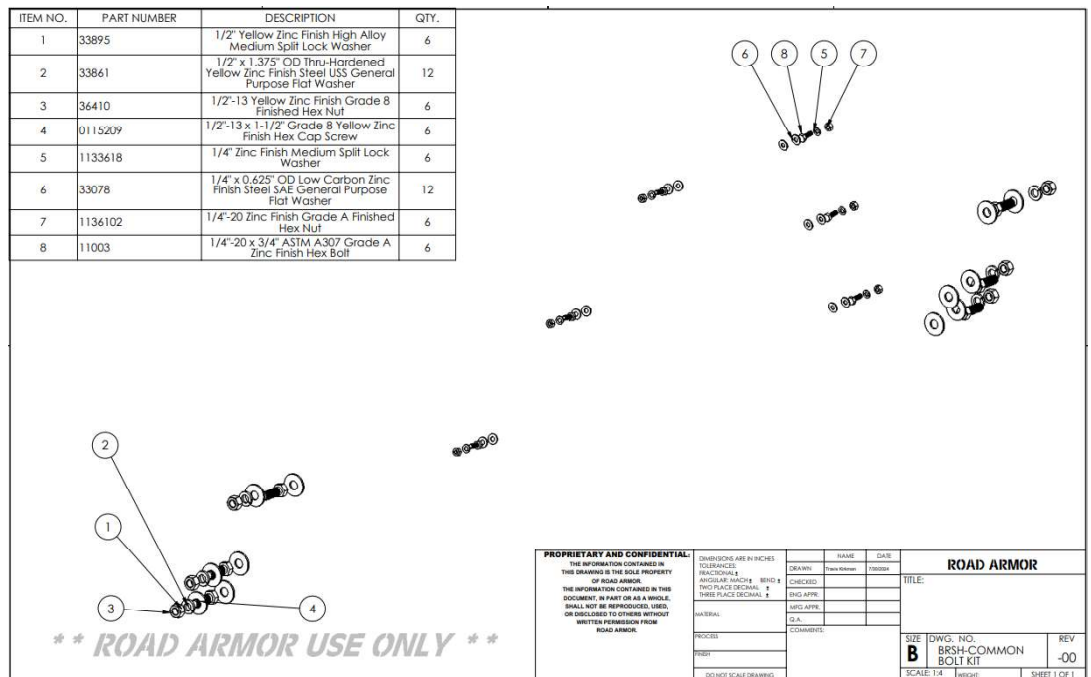
SAE & METRIC Socket set and wrenches
Screw drivers, pry tool, pick tool, pliers

RECOMMENDED TOOLS

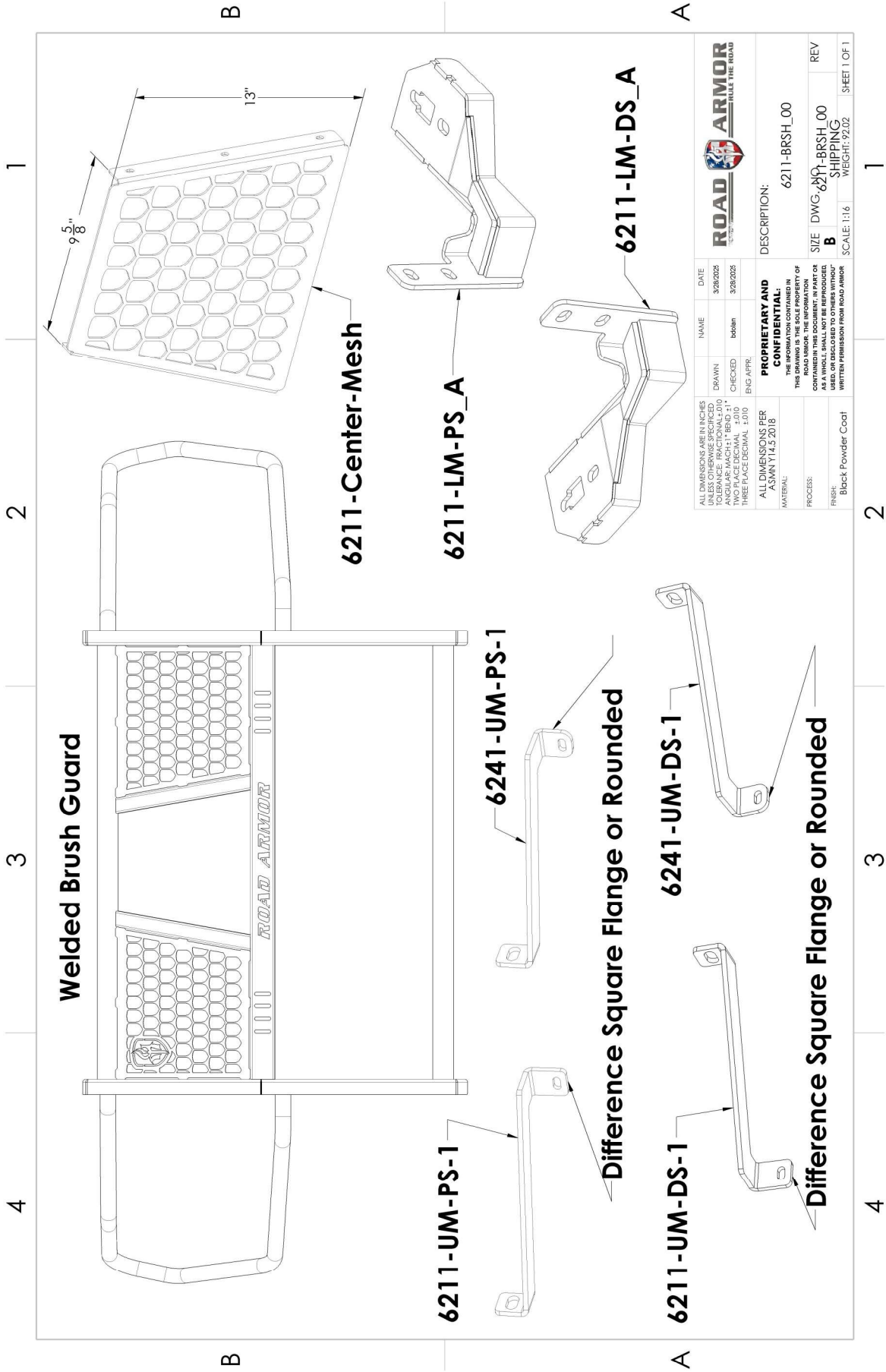
Adjustable Table Cart / Table/Pallet Lift or Hoist
Impact driver

INCLUDED HARDWARE

ITEM NO.	PART NUMBER	DESCRIPTION	QTY.
1	33895	1/2" Yellow Zinc Finish High Alloy Medium Split Lock Washer	6
2	33861	1/2" x 1.375" OD Thru-Hardened Yellow Zinc Finish Steel USS General Purpose Flat Washer	12
3	36410	1/2"-13 Yellow Zinc Finish Grade 8 Finished Hex Nut	6
4	0115209	1/2"-13 x 1-1/2" Grade 8 Yellow Zinc Finish Hex Cap Screw	6
5	1133618	1/4" Zinc Finish Medium Split Lock Washer	6
6	33078	1/4" x 0.625" OD Low Carbon Zinc Finish Steel SAE General Purpose Flat Washer	12
7	1136102	1/4"-20 Zinc Finish Grade A Finished Hex Nut	6
8	11003	1/4"-20 x 3/4" ASTM A307 Grade A Zinc Finish Hex Bolt	6



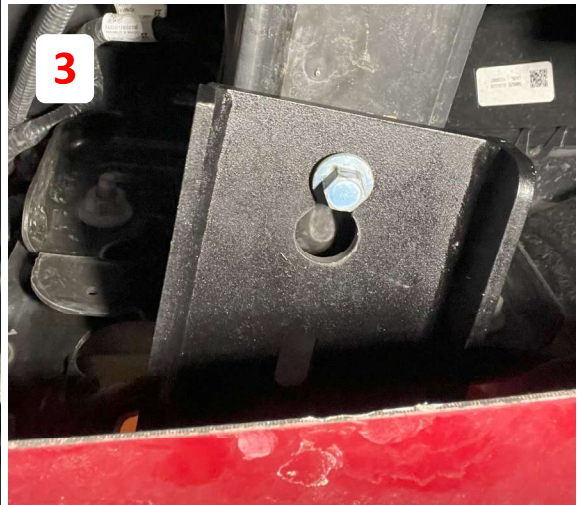
PROPRIETARY AND CONFIDENTIAL THE INFORMATION CONTAINED IN THIS DRAWING IS THE SOLE PROPERTY OF ROAD ARMOR. THE INFORMATION CONTAINED IN THIS DOCUMENT, IN PART OR AS A WHOLE, SHALL NOT BE REPRODUCED, USED, OR DISCLOSED TO OTHERS WITHOUT WRITTEN PERMISSION FROM ROAD ARMOR.		DIMENSIONS ARE IN INCHES UNLESS OTHERWISE SPECIFIED. DECIMALS: FRACTIONAL EQUIVALENTS DECIMALS: FRACTIONAL EQUIVALENTS DECIMALS: FRACTIONAL EQUIVALENTS DECIMALS: FRACTIONAL EQUIVALENTS	DRAWN: _____ CHECKED: _____ ENG APPR: _____ MFG APPR: _____ DATE: _____ COMMENTS: _____	NAME: _____ DATE: _____ TITLE: _____ ROAD ARMOR
REVISIONS: REVISION: _____ DATE: _____ BY: _____	SIZE: B SCALE: 1:1 DWG. NO.: BRSH-COMMON BOLT KIT REV: -00 SHEET 1 OF 1			



ALL DIMENSIONS ARE IN INCHES UNLESS OTHERWISE SPECIFIED	NAME	DATE	DESCRIPTION
ANGULAR: MACH: ±1° BEND: ±1°	bobbin	3/28/2024	6211-BRSH_00
TWO PLACE DECIMAL ±0.01	ENG APPR.	3/28/2024	
THREE PLACE DECIMAL ±0.001			
ALL DIMENSIONS PER ASMN Y14.5 2018	PROPRIETARY AND CONFIDENTIAL:		
MATERIAL:	THE INFORMATION CONTAINED IN THIS DRAWING IS THE SOLE PROPERTY OF ROAD ARMOR. IT IS TO BE USED AS A WHOLE, SHALL NOT BE REPRODUCED OR DISCLOSED TO OTHERS WITHOUT WRITTEN PERMISSION FROM ROAD ARMOR.		
PROCESS:	6211-BRSH_00		
FINISH: Black Powder Coat	SIZE DWG: 6211-BRSH_00		
	SHIPPING		
	SCALE: 1:16		
	WEIGHT: 92.02		
	REV		
	SHEET 1 OF 1		

1 If Equipped, Remove Shroud around Tow Hook Opening.

2 Remove Tow Hooks as Shown Below.

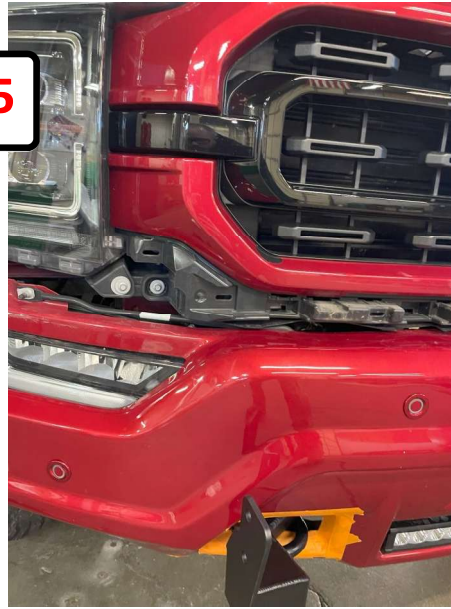


3 Mount Lower Bracket through Tow Hook opening and Hook onto the Tow Hook Bolt that was left in place. Leave Bolt Loose.

4 Hook the Tow Hook onto the Bolt that was left and then Install the rest of the Tow Hook Factory Hardware.



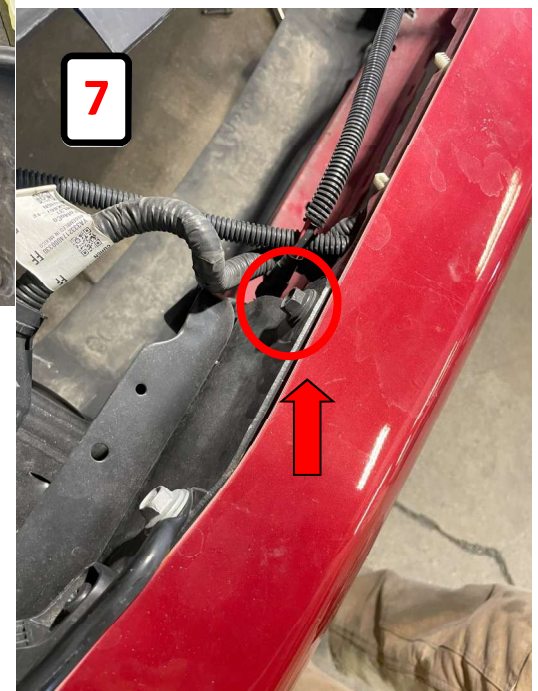
5 To Install Upper Brackets, the Grille and Front Fascia will need to be Removed. Remove Fascia by Removing 4 Bolts in the Wheel Well. Then the rest of the Fascia is held by Clips.

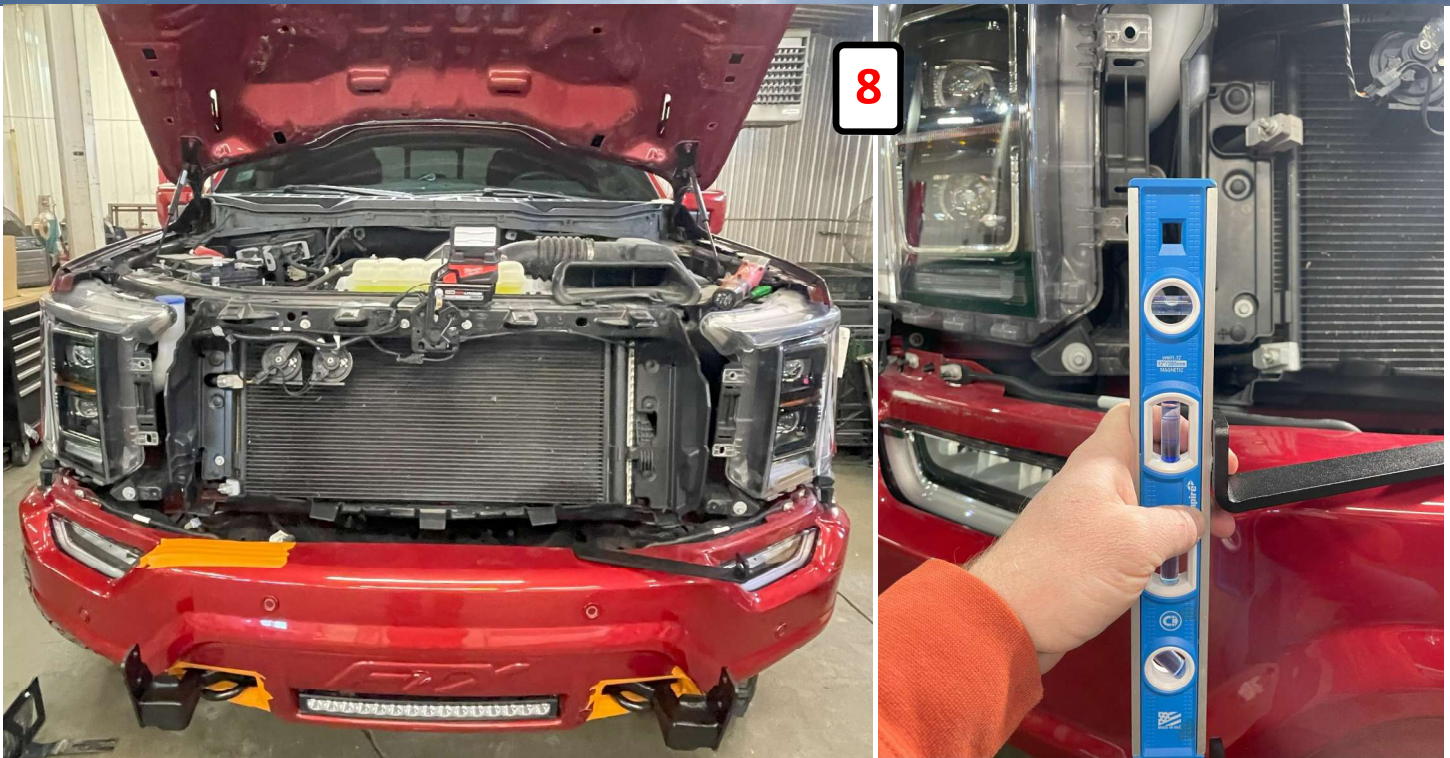


6 To Remove the Grille, Remove the Plastic cover on Top that is held in with Push Pins. Then Remove the Bolts on Top and Pull the Grille off. If the Front Camera is Equipped, make sure to Unplug before Removing the Grille.

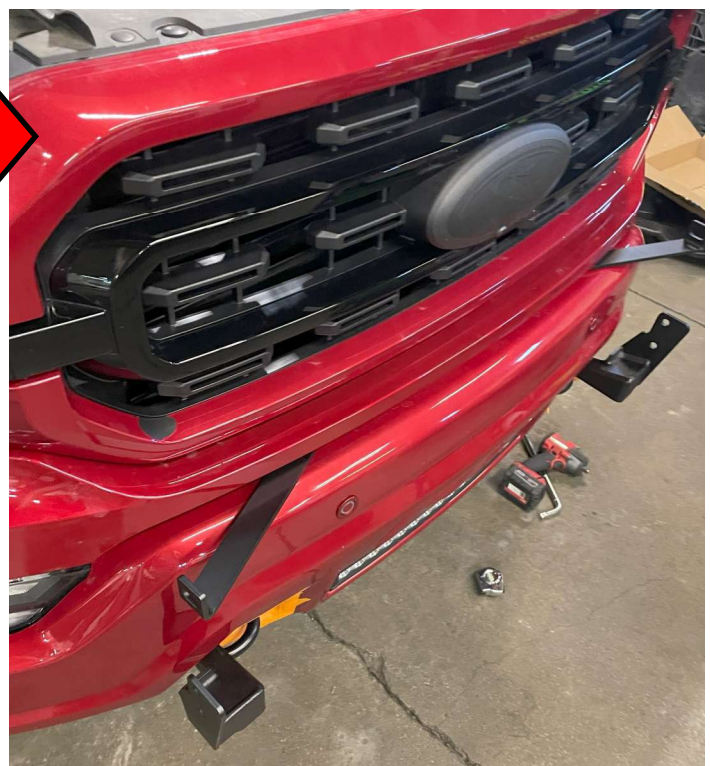


7 The Upper Bracket will Reuse the Top Inner Bolt as shown on the Right. If you have a 2021-2023, Use the Upper Brackets that have a more Square Mounting Flange. For 2024+ Models, Use Rounded Flange.

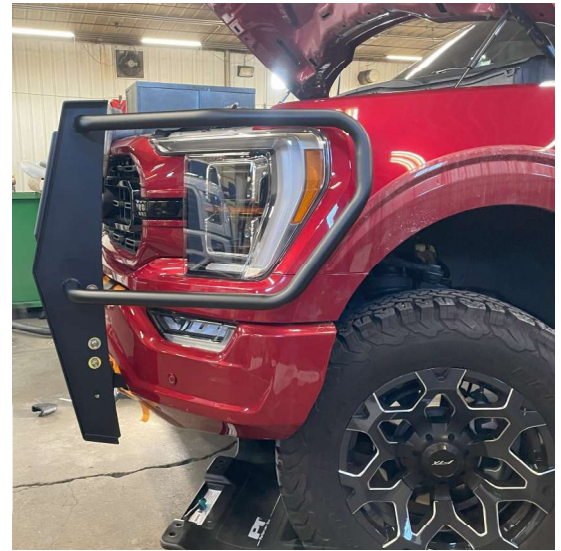




- 8** Once Upper Brackets are Installed, Line the Outside of the Bracket with the Lower Bracket. Once aligned, Tighten all bolts.
- 9** Reinstall the Grille then the Fascia. The Grille will sit on top of the Upper Brackets as shown below.



9 Install Road Armor Brush Guard by having someone hold the Guard while the Bolts get put in. Adjust the Fitment to your liking then Tighten all Nuts and Bolts.



Camera View



Finished



