

# INSTALL INSTRUCTIONS

**Adaptive Cruise Module—Adapter Bracket**

**Product : 620ACM**

**Application: 2020-UP Ford F-250, F-350, F-450  
2019-2020 Ford RAPTOR**

**\*\*To Be Used With 618ACM on Applied Models\*\***

**\*\*WARNING\*\***

Read the instructions completely before beginning installation. **By installing this product, you are accepting liability for potential changes in the characteristics/sensitivity of your adaptive cruise control system.** If you do not wish to install this product, you may return it for a refund. Also keep in mind this is an aftermarket product and MAY require minor shimming for proper alignment of sensor position. Toward the ground is more sensitive, toward the sky is less sensitive. If vehicle system disables, sensor will need adjusted for proper line of sight. Road Armor is not responsible for any damages to vehicle.

**❗ IMPORTANT NOTICE**

**\*\*After the installation of this product, your adaptive cruise control module may have to be recalibrated by a Ford technician. \*\***

**SAFETY FIRST!**

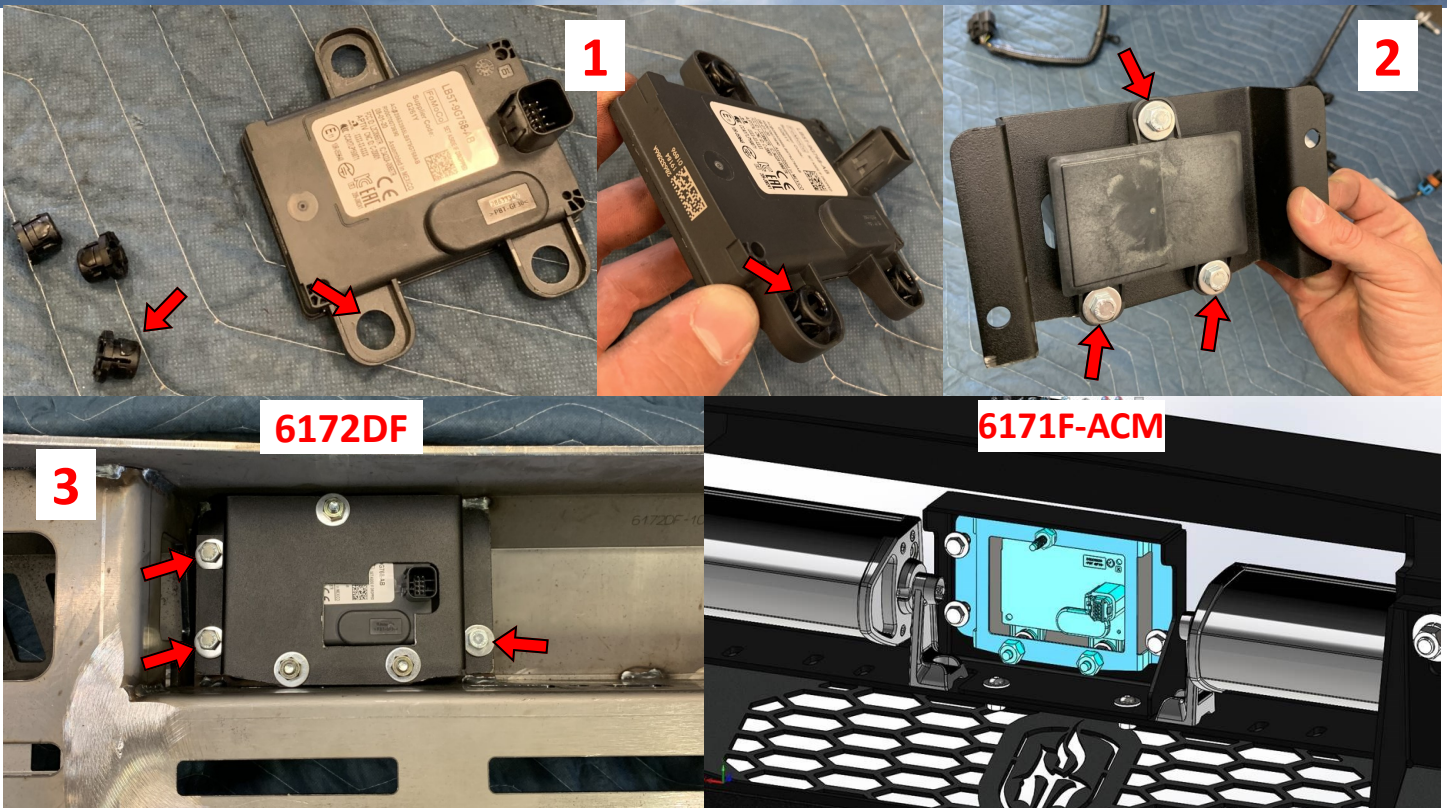
- FOLLOW ALL INSTRUCTIONS, YOUR SAFETY AND THE SAFETY OF OTHERS IS MOST IMPORTANT.
- WEAR APPROPRIATE EYE PROTECTION AND EXERCISE CAUTION WHEN DRILLING / CUTTING

**REQUIRED TOOLS**

Metric and SAE Socket Sets and Wrenches

**KIT INCLUDED:**

- (3) 1/4-in x 1in Stainless Button Head Bolts
- (3) 1/4-in Grade A Nuts
- (6) 1/4-in Grade SAE Washers
- (1) 620-ACM RELOCATION BRACKET



- 1** Remove each plastic spacer from ACM sensor using 11mm socket, reinstall spacers in reverse to allow the sensor to sit properly flush against the relocation bracket.
- 2** Install sensor onto adapter relocation bracket with 3 - 1/4" hardware (Bolts, Washers and Nuts) through kit bracket, securing ACM sensor onto the kit bracket. **\*\*DO NOT OVER TIGHTEN\*\***
- 3** Install adapter bracket and sensor onto bumper using bumper kit hardware.

**\*\*STEALTH and VAQUERO Bumper Will Require 618ACM Box Kit\*\***

**\*\*STEALTH 6171F Bumper Will Require 6171FACM Bracket\*\***