



INSTALL INSTRUCTIONS

FORD RANGER REAR BUMPER

Product : 6191R0B

Application : 2019 FORD RANGER

I WARNING

Read the instructions completely before beginning installation. Before tightening bolts, drilling or cutting where required, check to make sure there are no obstructions such as brake, fuel or electrical lines which may be damaged. Also keep in mind this is an after-market product and MAY require minor shimming and/or trimming, reaming, etc. for proper fit. Road Armor is not responsible for any damages to vehicle.

ⓘ IMPORTANT NOTICE

- Be sure to inspect and test fit your product to ensure proper fitment before having it coated, painted, bed lined, etc.
- Road Armor will not be responsible for the cost of coating your unit if any problems with fit or finish are not noted and addressed beforehand.

SAFETY FIRST!

- FOLLOW ALL INSTRUCTIONS, YOUR SAFETY AND THE SAFETY OF OTHERS IS MOST IMPORTANT.
- WEAR APPROPRIATE EYE PROTECTION AND EXERCISE CAUTION WHEN DRILLING / CUTTING

REQUIRED TOOLS

SAE & METRIC Socket set and wrenches

Screw drivers, pry tool, pick tool, pliers

Cutoff Wheel (3")

Adjustable Table Cart / Table/Pallet Lift or Hoist

Impact driver



INCLUDED HARDWARE

(6) 1/2" Bolt Tabs

(6) 1/2" Washers, Lock Washers, Hex Nuts

(6) Retainer Washers

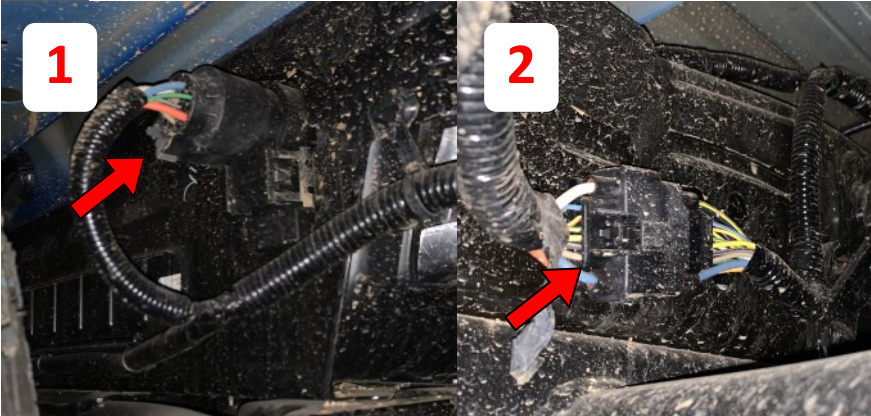
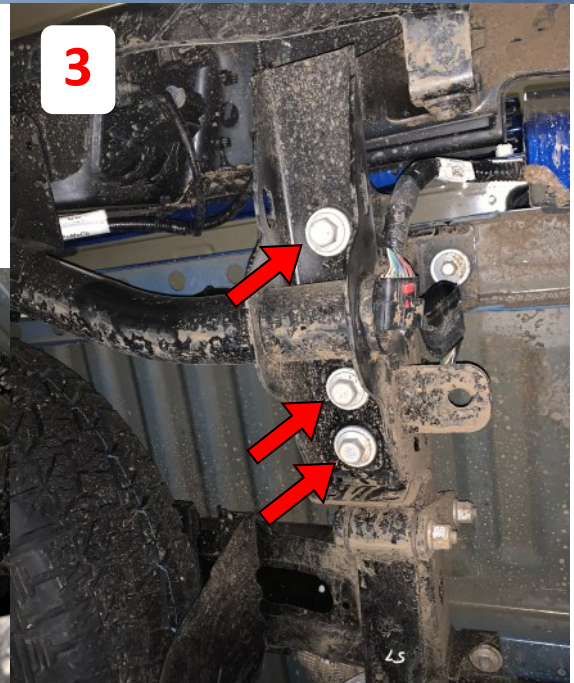
(10) #10-24 Button-Head Bolts

(10) #10-24 Kept-nut

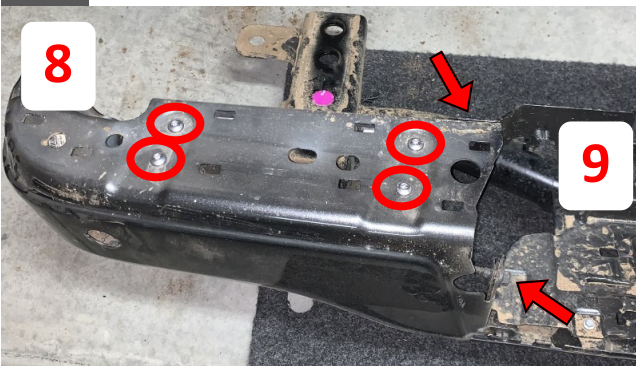
(1) Receiver Plug Plate

(1) Stainless Steel Road Armor Logo

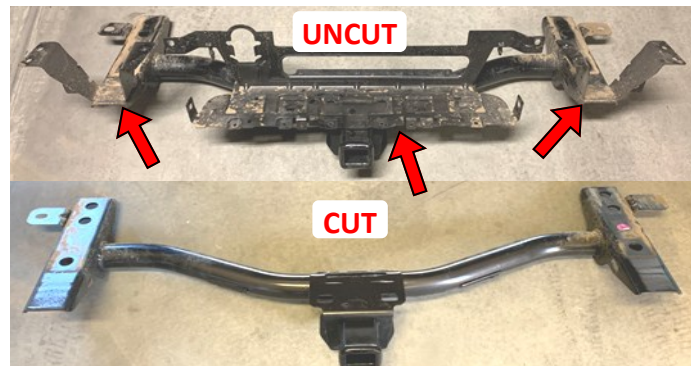
- 1 Disconnect the trailer plug and license plate lights.
- 2 Disconnect sensor harness from vehicle.
- 3 Remove 6 bolts from hitch and remove bumper and hitch assembly as one.



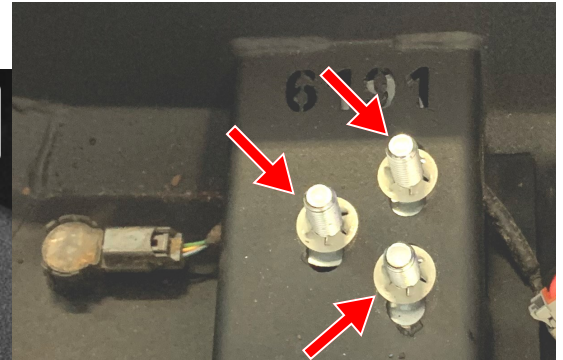
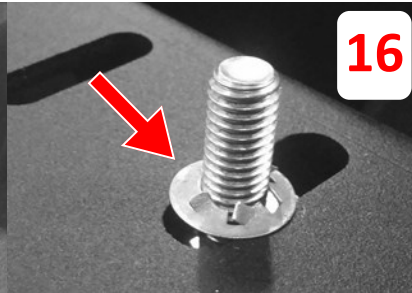
- 4 Unplug the light bulbs from the light boxes by carefully turning them counterclockwise and pulling.
- 5 Remove the trailer plug housing from the inside of the bumper by depressing the two metal clips on either side and pushing out. Remove the spare tire access lock by using the key inside the key fob to unlock it.
- 6 Remove the four push pins from the center step pad on bumper.
- 7 Using a plastic panel pry tool, start on the outside of the bumper and remove the plastic kick board from the bumper.
- 8 With the kick board removed, use a torques head T40H socket to remove the four bolts holding the side pieces onto the frame.
- 9 Using a 15mm socket wrench, remove the two bolts holding the outside pieces onto the frame and remove from the vehicle.
- 10 Using a 7mm socket wrench, remove the six 7mm bolts holding the plastic trim over the center of hitch.
- 11 Using a plastic panel pry tool, remove the push pins holding the sensor harness to the frame and put aside to install in the new bumper.
- 12 With the bumper and harness removed from the truck, remove the metal bumper brackets from the hitch frame mounts and center hitch support by grinding the welds away and removing all three brackets.



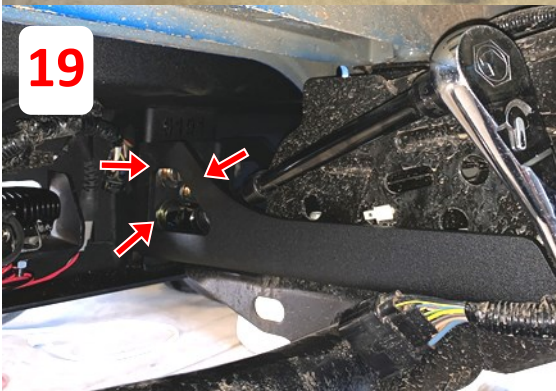
12



- 13 Install stainless RA Logos and receiver plug plate with provided #10 hardware.
- 14 Install all rear sensors and harness if equipped, followed by license plate lights and harness.
- 15 Install optional winch at this time. (Details on page 5.)



- 16 Install 6 - 2" bolt tabs through bumper using the included keeper washers. Use a 3/4" deep socket to push the washers over the threads.
- 17 **Cut & Remove** frame bracket tab on each side of outside frame rails.
- 18 Install both DVR & PSG Stealth brackets on top of hitch plate. Install hitch assembly loosely onto frame rails using six OEM hitch bolts, sandwiching Stealth frame brackets between frame rail and hitch.
- 19 ****Careful Not to Damage Tailgate During Installation**** Install Road Armor bumper use 3 - 1.5" bolt tabs to secure each bracket to stealth hitch brackets using a washer, lock washer and nut over each bolt. Once all nuts are finger tight, check fitment profile and tighten them all down. Check that all the OEM hitch bolts are fully tight as well.
- 20 Reconnect bumper all wiring harness and ensure all wiring is secured.



****Installation Tips - STEALTH Winch Rear Bumper****

- 1** When installing "hawse" Fairlead, use 2 - 3/8" bolts (supplied with winch) to install fairlead onto winch mounting plate.
- 2** If installing "roller" fairlead, use bumper as templet to drill out 3/8" holes shown below with **blue arrows** (allows the bottom two winch bolts to bolt through the fairlead bracket and into the winch.) (Longer winch bolts will be needed.)
- 3** Install winch by placing winch onto mounting plate (lever on passenger side); use 4 - winch bolts through plate to install winch onto bumper. (**Green Arrows**) (longer bolts may need to be purchased depending on what mounting bolts were supplied with the winch.) (**License Plate Relocation Bracket Available for Purchase: LPF360B**)

