



# INSTALL INSTRUCTIONS

## Spartan Front Bumper

Product : 6172XF

Application : 2017 + Ford Super Duty

**\*\*Note: 2020+ Super Duty with Adaptive Cruise  
will Require 620ACM Adapter Kit.\*\***



## I WARNING

Read the instructions completely before beginning installation. Before tightening bolts, drilling or cutting where required, check to make sure there are no obstructions such as brake, fuel or electrical lines which may be damaged. Also keep in mind this is an after-market product and MAY require minor shimming and/or trimming, reaming, etc. for proper fit. Road Armor is not responsible for any damages to vehicle.

## ⓘ IMPORTANT NOTICE

- Be sure to inspect and test fit your product to ensure proper fitment before having it coated, painted, bed lined, etc.
- Road Armor will not be responsible for the cost of coating your unit if any problems with fit or finish are not noted and addressed beforehand.

## SAFETY FIRST!

- FOLLOW ALL INSTRUCTIONS, YOUR SAFETY AND THE SAFETY OF OTHERS IS MOST IMPORTANT.
- WEAR APPROPRIATE EYE PROTECTION AND EXERCISE CAUTION WHEN DRILLING / CUTTING

### REQUIRED TOOLS

SAE & METRIC Socket set and wrenches  
Screw drivers, pry tool, pick tool, pliers

### RECOMMENDED TOOLS

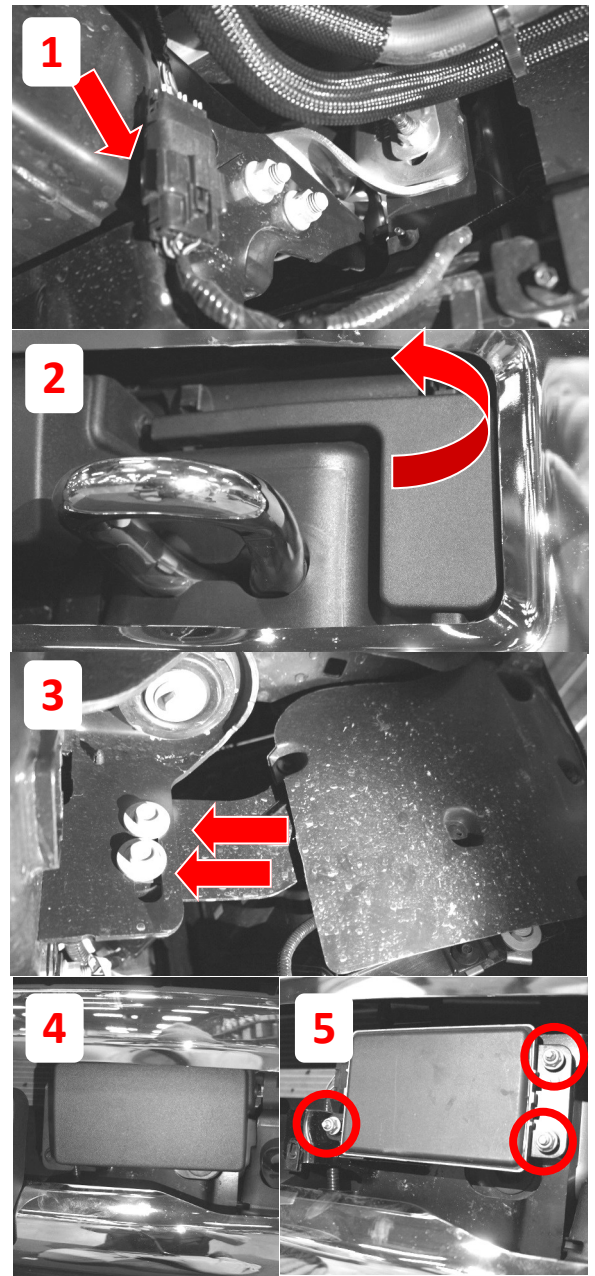
Adjustable Table Cart / Table/Pallet Lift or Hoist  
Impact driver

### INCLUDED HARDWARE

- 10 1.5" Single Bolt Tab (ZINC)
- 10 1/2" Yellow Zinc Finish High Alloy Medium Split Lock Washer
- 10 1/2"-13 Yellow Zinc Finish Grade 8 Finished Hex Nut
- 5 1/2" Bolt 15/16" O.D. Zinc Pushnut Bolt Retainer
- 2 1/4"-20 x 3/4" ASTM A307 Grade A Zinc Finish Hex Bolt
- 2 1/4" x 0.625" OD Low Carbon Zinc Finish Steel SAE General Purpose Flat Washer
- 2 1/4" Zinc Finish Medium Split Lock Washer
- 2 1/4"-20 Zinc Finish Grade A Finished Hex Nut
- 10 1/2" x 1.062" OD Thru-Hardened Yellow Zinc Finish Steel SAE General Purpose Flat Washer
- 4 3/8 Dome Plug

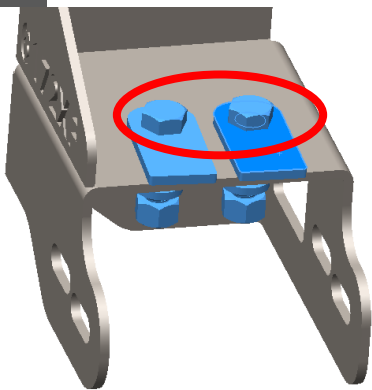


- 1 Disconnect bumper harness & block warmer (if equipped) . These plugs are located behind the bumper near the frame on the Passenger side.
- 2 Remove plastic trim around tow hooks to reveal bolts on both Driver and Passenger sides.
- 3 Remove inner bumper support bolts. This is a truss like support bracket located near the first body mount behind the bumper.
- 4 Remove plastic cover over adaptive cruise control module (if equipped)
- 5 Unbolt, unplug and carefully set aside the Adaptive Cruise Control Module (if equipped). This module can be installed into the center section of the 6172XF Spartan bumper. **\*\*Note: 2020+ Super Duty with Adaptive Cruise will Require 620ACM Adapter Kit.\*\***
- 6 Remove 4 bolts each side of tow hooks and pull off factory bumper.
- 7 Remove tow hooks both sides
- 8 Remove under-run guards.





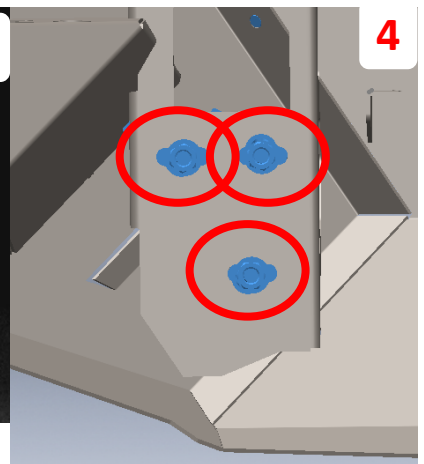
- 1** Install Brackets onto the frame using (2) 1/2" bolt tabs for the top, and the factory hardware for the sides. Tighten until bracket is tight but still able to move.
- 2** Install 1/2" bolt tabs to bumper and secure with the 1/2" retaining nuts.
- 3** Install aftermarket lighting option, optionally accessories, and ACM (if equipped) to the bumper prior to installation on the truck.
- 4** Line up bolt tabs in the same location on the slots in the bumper.
- 5** Install the bumper onto the Road Armor brackets and secure with supplied 1/2" hardware (flat washer, spring washer, and nut).
- 6** Adjust front/back alignment first and tighten the bracket to the frame tightening the top hardware first then the side factory hardware.
- 7** Adjust left/right and up/down alignment then tighten the 1/2" bumper to bracket hardware.
- 8** Reconnect factory wiring harness and secure an loose wiring.



**1**



**2**



**4**

