

INSTALL INSTRUCTIONS

Rear Stealth Bumper

Product : 6171R0B

Application : 2017 + Ford Raptor

I WARNING

Read the instructions completely before beginning installation. Before tightening bolts, drilling or cutting where required, check to make sure there are no obstructions such as brake, fuel or electrical lines which may be damaged. Also keep in mind this is an after-market product and MAY require minor shimming and/or trimming, reaming, etc. for proper fit. Road Armor is not responsible for any damages to vehicle.

❗ IMPORTANT NOTICE

- Be sure to inspect and test fit your product to ensure proper fitment before having it coated, painted, bed lined, etc.
- Road Armor will not be responsible for the cost of coating your unit if any problems with fit or finish are not noted and addressed beforehand.

SAFETY FIRST!

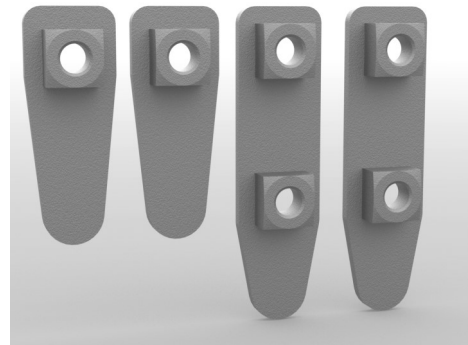
- FOLLOW ALL INSTRUCTIONS, YOUR SAFETY AND THE SAFETY OF OTHERS IS MOST IMPORTANT.
- WEAR APPROPRIATE EYE PROTECTION AND EXERCISE CAUTION WHEN DRILLING / CUTTING

REQUIRED TOOLS

Metric and SAE Socket Sets and Wrenches

Cut off wheel

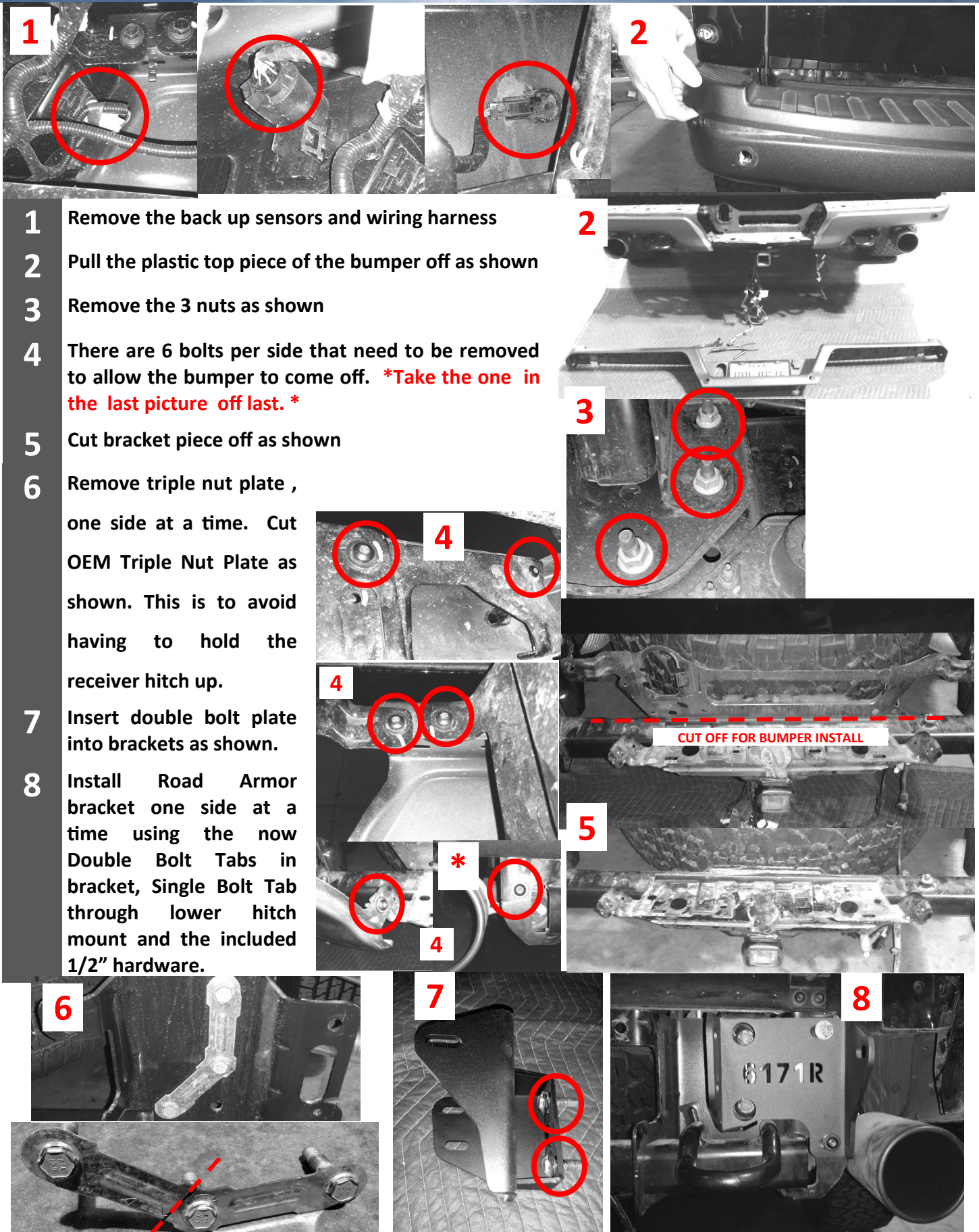
Tape Measure



INCLUDED HARDWARE

- 8 10-24 x 3/4" Button Socket Cap Screw
- 8 10-24 External Tooth lock washer K-Lock Nut
- 6 1/2" Medium Split Lock Washer
- 6 1/2" x 1.375" Flat Washer
- 2 7/16"-14x 1-1/2" Hex Cap Screw
- 4 7/16" x 1.250" Flat Washer
- 2 7/16" Medium split Lock Washer
- 2 7/16"-14 Finished Hex Nut
- 6 Hex Bolt
- 2 1/2" Single Nut Plate
- 2 1/2" Double Nut Plate





- 1 Remove the back up sensors and wiring harness
- 2 Pull the plastic top piece of the bumper off as shown
- 3 Remove the 3 nuts as shown
- 4 There are 6 bolts per side that need to be removed to allow the bumper to come off. ***Take the one in the last picture off last.***
- 5 Cut bracket piece off as shown
- 6 Remove triple nut plate , one side at a time. Cut OEM Triple Nut Plate as shown. This is to avoid having to hold the receiver hitch up.
- 7 Insert double bolt plate into brackets as shown.
- 8 Install Road Armor bracket one side at a time using the now Double Bolt Tabs in bracket, Single Bolt Tab through lower hitch mount and the included 1/2" hardware.

- 9 Remove tape from around factory wire harness.
- 10 Measure side to side on bumper and adjust brackets if needed.
- 11 Install bumper using supplied 1/2" hardware and nut plates



FINISHED

