



**WINCH**



**NON-WINCH**



# INSTALL INSTRUCTIONS

**Sahara Front Bumper**

**Product : SA611XXX**

**Application : 2011—2016 Ford Super Duty**

## I WARNING

Read the instructions completely before beginning installation. Before tightening bolts, drilling or cutting where required, check to make sure there are no obstructions such as brake, fuel or electrical lines which may be damaged. Also keep in mind this is an after-market product and MAY require minor shimming and/or trimming, reaming, etc. for proper fit. Road Armor is not responsible for any damages to vehicle.

## ❗ IMPORTANT NOTICE

- Be sure to inspect and test fit your product to ensure proper fitment before having it coated, painted, bed lined, etc.
- Road Armor will not be responsible for the cost of coating your unit if any problems with fit or finish are not noted and addressed beforehand.

## SAFETY FIRST!

- FOLLOW ALL INSTRUCTIONS, YOUR SAFETY AND THE SAFETY OF OTHERS IS MOST IMPORTANT.
- WEAR APPROPRIATE EYE PROTECTION AND EXERCISE CAUTION WHEN DRILLING / CUTTING

## REQUIRED TOOLS

SAE & METRIC Socket set and wrenches

Screw drivers, pry tool, pick tool, pliers

## RECOMMENDED TOOLS

Adjustable Table Cart / Table/Pallet Lift or Hoist

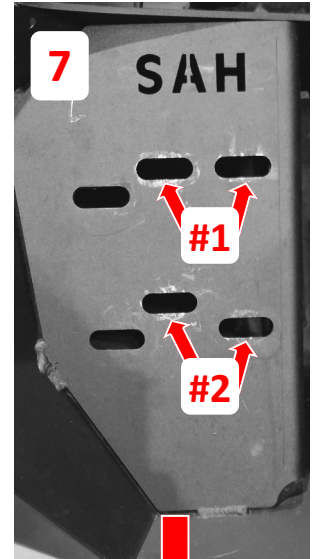
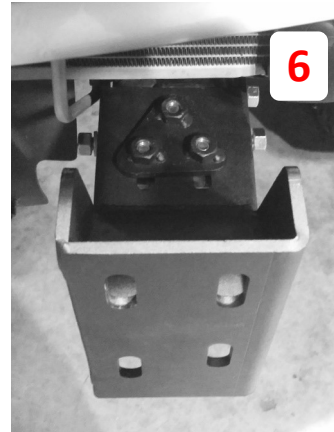
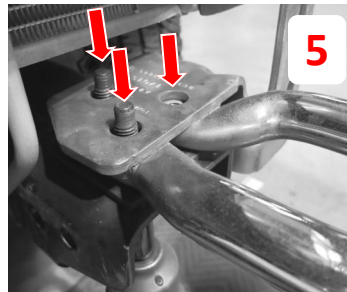
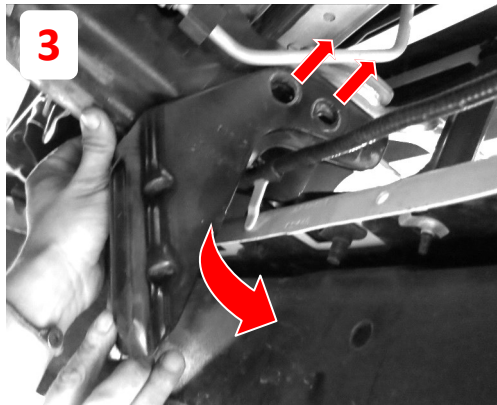
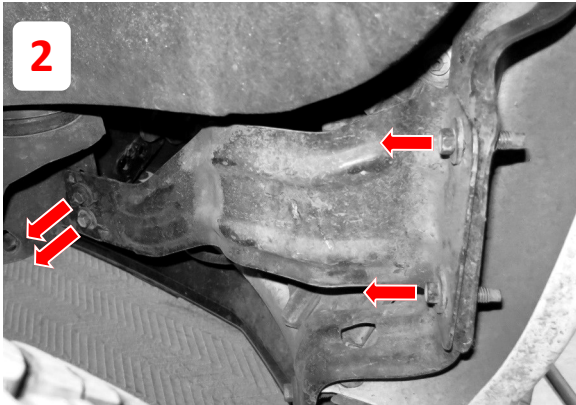
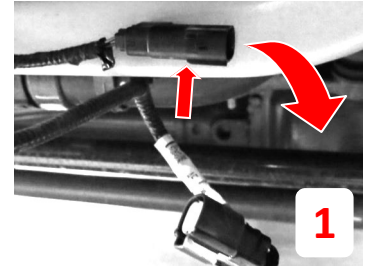
Impact driver

## INCLUDED HARDWARE

- 4 Retainer Washers / Clips
- 2 Double Bolt Plates (#1)
- 2 Double Bolt Plates (#2)
- 6 1.5" Single Bolt Tabs (ZINC)
- 14 1/2" Flat Washers
- 14 1/2" Split Lock Washers
- 14 1/2"-13 Grade 8 Hex Nuts
- 6 7/16" Bolts
- 6 7/16" Washers
- 6 7/16" Split Lock Washers
- 2 Trip Nut Plates (Triangle Shape)



- 1 Unplug bumper wiring harness from the body harness
- 2 Remove (4) 13mm bolts each side of outer bumper support gussets
- 3 Remove under-run guards from both frame rails (18mm bolts)
- 4 Remove bolts from front by each tow hook to remove bumper
- 5 Remove factory tow hooks both sides using 15mm socket



- 6 Fit up Road Armor bracket over frame as shown, do not tighten yet.
- 7 Insert the #1 Double Bolt Tabs through inside top slots as indicated, then affix to the bumper side bracket using a retainer clip, one per tab only. Then do the same with the #2 Double Bolt Tabs in the inside bottom slots. Do no worry about the unused outer slots, they are for a different vehicle application.
- 8 Fit up bumper to brackets aligning the retained bolts with bracket slots
- 9 Once centered and satisfied with fitment tighten everything down

**FINISHED**

