



INSTALL INSTRUCTIONS

Spartan Rear Bumper

Product : 6112XR

Application : 2011-2016 Ford Super Duty

I WARNING

Read the instructions completely before beginning installation. Before tightening bolts, drilling or cutting where required, check to make sure there are no obstructions such as brake, fuel or electrical lines which may be damaged. Also keep in mind this is an after-market product and MAY require minor shimming and/or trimming, reaming, etc. for proper fit. Road Armor is not responsible for any damages to vehicle.

ⓘ IMPORTANT NOTICE

- Be sure to inspect and test fit your product to ensure proper fitment before having it coated, painted, bed lined, etc.
- Road Armor will not be responsible for the cost of coating your unit if any problems with fit or finish are not

SAFETY FIRST!

- FOLLOW ALL INSTRUCTIONS, YOUR SAFETY AND THE SAFETY OF OTHERS IS MOST IMPORTANT.
- WEAR APPROPRIATE EYE PROTECTION AND EXERCISE CAUTION WHEN DRILLING / CUTTING

REQUIRED TOOLS

SAE & METRIC Socket set and wrenches

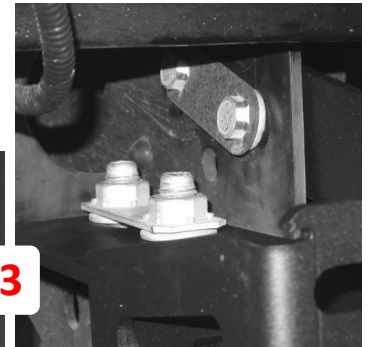
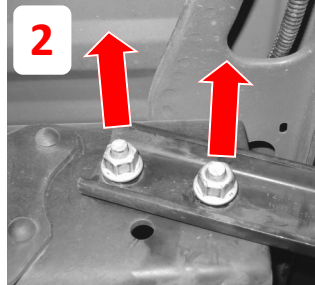
Screw drivers, pry tool, pick tool, pliers

RECOMMENDED TOOLS

INCLUDED HARDWARE

- 6 1/2" x 1.375" OD Thru-Hardened Yellow Zinc Finish Steel USS General Purpose Flat Washer
- 6 1/2" Yellow Zinc Finish High Alloy Medium Split Lock Washer
- 6 1/2"-13 Yellow Zinc Finish Grade 8 Finished Hex Nut
- 6 1/2" Bolt 15/16" O.D. Zinc Push nut Bolt Retainer
- 4 1/4" (14) Screw Size License Plate Nut White Nylon
- 4 M6 x 16mm Phillips Hex Washer Head Tap Screw
- 8 1/4"-20 x 3/4" ASTM F879 Hex Drive Grade 18-8 Stainless Steel Button Socket Cap Screw
- 8 1/4"-20 Zinc Finish Steel with External Tooth Lockwasher K-Lock Nut
- 4 #10-24 x 3/4" ASTM F879 Hex Drive Grade 18-8 Stainless Steel Button Socket Cap Screw
- 4 #10-24 Zinc Finish Steel with External Tooth Lockwasher K-Lock Nut
- 4 1 Inch Dome Plug

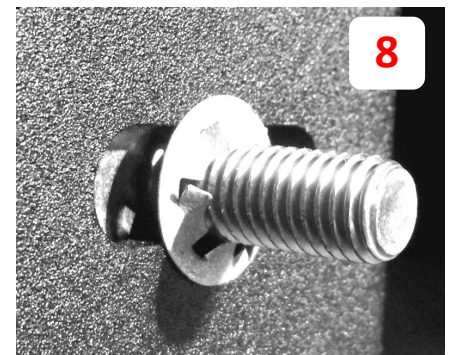
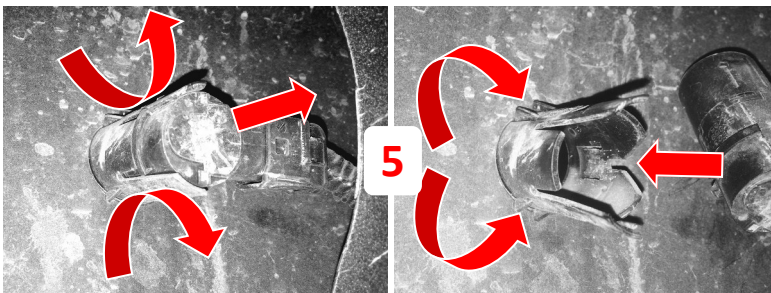
- 1 Unplug bumper wiring harness from body harness.
- 2 Remove nuts and double bolt plate both sides, then remove OE bumper.
- 3 Remove 2 bolts from Trailer Hitch each side as shown and fit up Road Armor bracket re-using the OEM hardware.



- 5 Remove bumper harness including all sensors and plugs. Note which
- 6 Install frame brackets onto frame using factory hardware. (Tighten just enough so that the bracket is still adjustable)
- 7 Install factory license plate lights, aftermarket lighting, and sensors (if equipped)

NOTE Block Off Plate for Lights Sold Separately

- 8 Install 1/2 bolt tabs onto bumper and secure with 1/2" retaining nuts.
- 9 Line bolt tabs up into same location of the slots on the bumper.



- 10** Mount bumper on truck and fasten with 1/2" hardware (flat washer, spring washer, and nut) (Tighten just enough so that the bumper is able to move)
- 11** Adjust front/back alignment first and tighten brackets to frame
- 12** Adjust left/right and up/down, then tighten frame bracket to bumper bolt tabs.
- 13** Attach wiring harness from bumper to truck. Then secure any loose wiring that may be hanging.

