



# **INSTALL INSTRUCTIONS**

## **Spartan Front Bumper**

**Product : 6112XF**

**Application : 2011-2016 Ford Super Duty**

## I WARNING

Read the instructions completely before beginning installation. Before tightening bolts, drilling or cutting where required, check to make sure there are no obstructions such as brake, fuel or electrical lines which may be damaged. Also keep in mind this is an after-market product and MAY require minor shimming and/or trimming, reaming, etc. for proper fit. Road Armor is not responsible for any damages to vehicle.

## i IMPORTANT NOTICE

- Be sure to inspect and test fit your product to ensure proper fitment before having it coated, painted, bed lined, etc.
- Road Armor will not be responsible for the cost of coating your unit if any problems with fit or finish are not

## SAFETY FIRST!

- FOLLOW ALL INSTRUCTIONS, YOUR SAFETY AND THE SAFETY OF OTHERS IS MOST IMPORTANT.
- WEAR APPROPRIATE EYE PROTECTION AND EXERCISE CAUTION WHEN DRILLING / CUTTING

## REQUIRED TOOLS

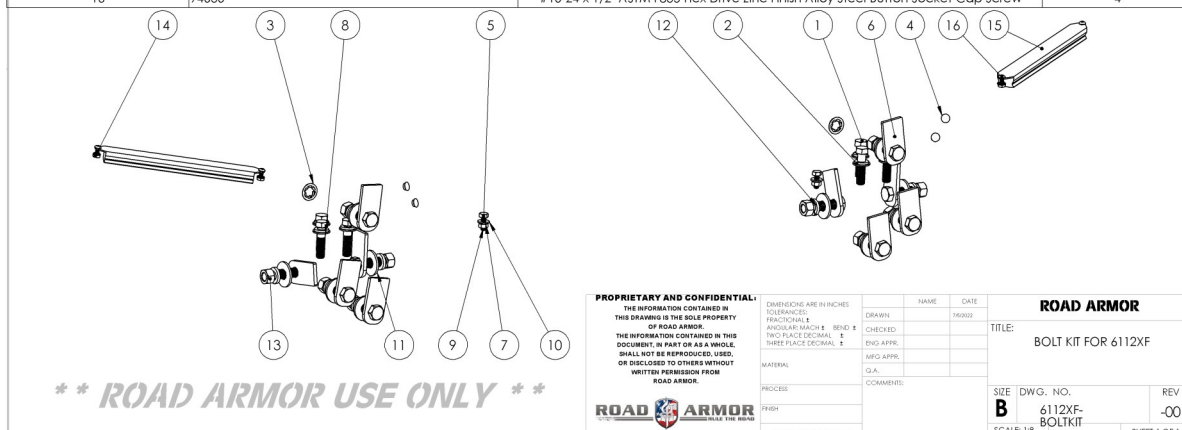
SAE & METRIC Socket set and wrenches

Screw drivers, pry tool, pick tool, pliers

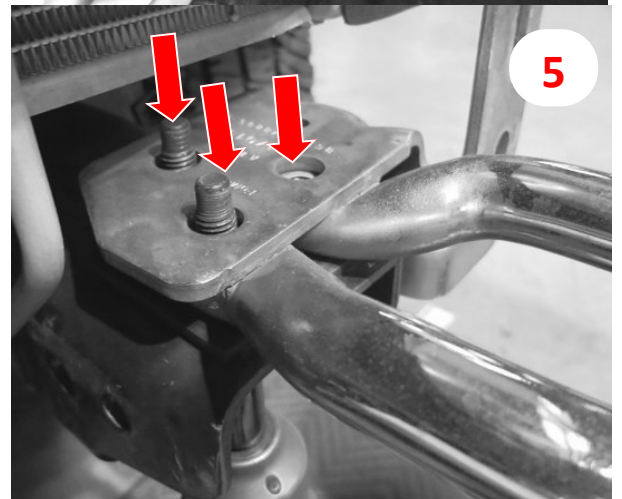
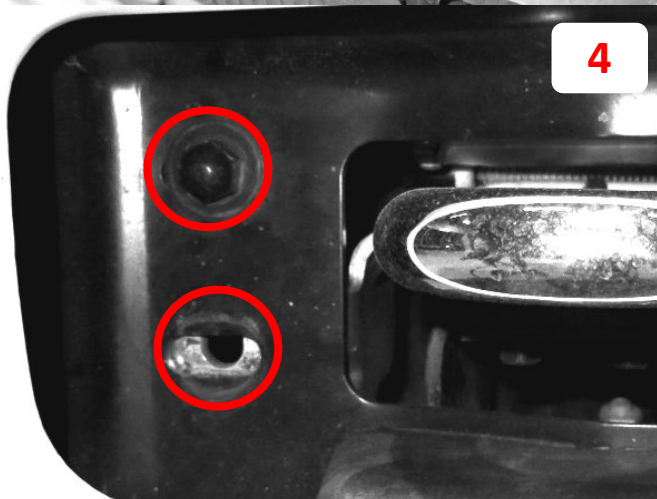
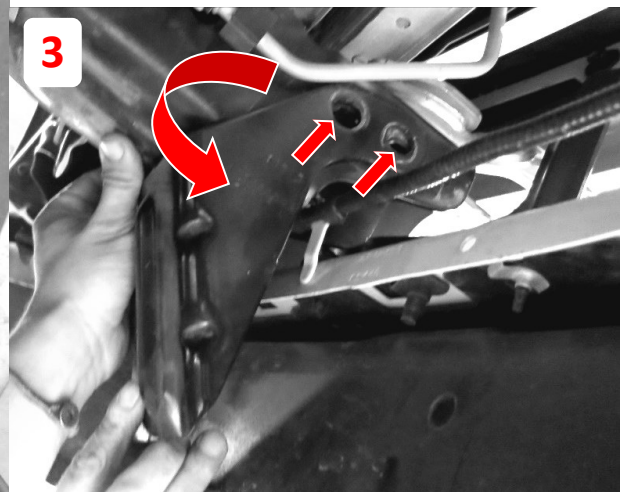
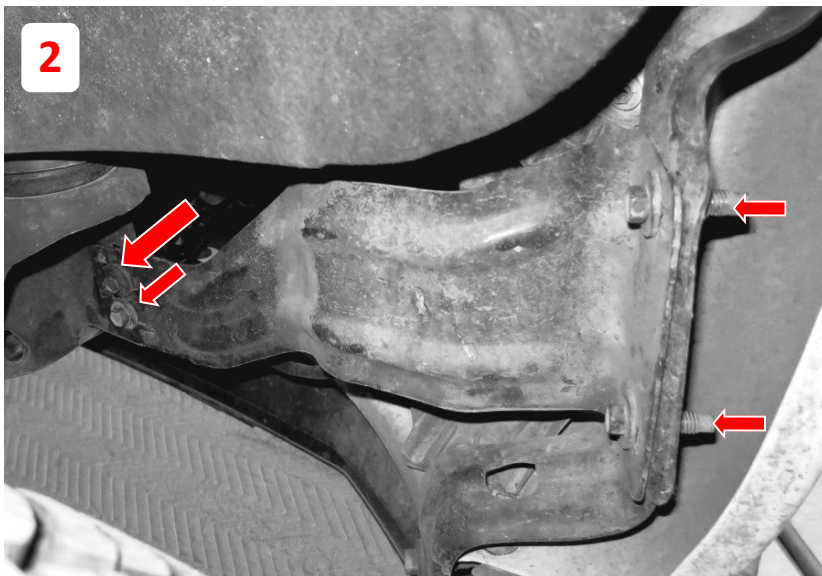
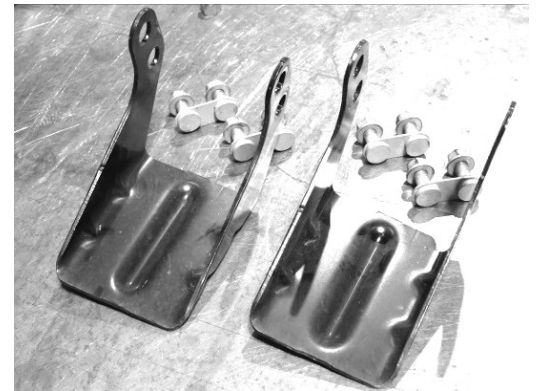
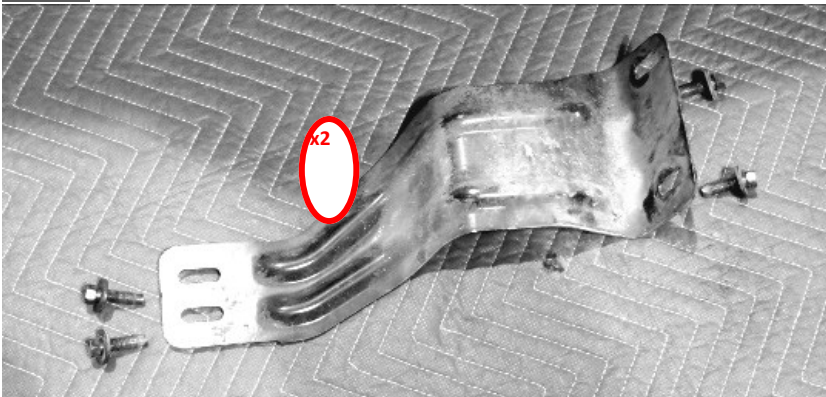
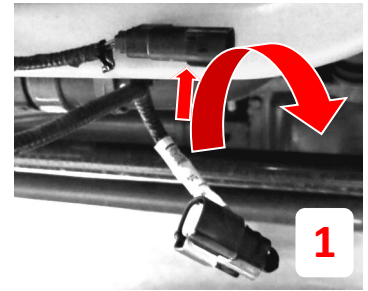
## RECOMMENDED TOOLS

## INCLUDED HARDWARE

ITEM NO.	PART NUMBER	DESCRIPTION	QTY.
1	0115160	7/16"-14 x 1-3/4" Grade 8 Yellow Zinc Finish Hex Cap Screw	6
2	0123497	7/16" Yellow Zinc Finish Medium Split Lock Washer	6
3	0162849	1/2" Bolt 15/16" O.D. Zinc Pushnut Bolt Retainer	2
4	0708886	.375 Black Dome Plug	4
5	11003	1/4"-20 x 3/4" ASTM A307 Grade A Zinc Finish Hex Bolt	2
6	11218-05078	1.5" Single Bolt Tab (ZINC)	10
7	1133618	1/4" Zinc Finish Medium Split Lock Washer	2
8	1133816	7/16" x 0.922" OD Thru-Hardened Yellow Zinc Finish Steel SAE General Purpose Flat Washer	6
9	1136102	1/4"-20 Zinc Finish Grade A Finished Hex Nut	2
10	33078	1/4" x 0.625" OD Low Carbon Zinc Finish Steel SAE General Purpose Flat Washer	2
11	33861	1/2" x 1.375" OD Thru-Hardened Yellow Zinc Finish Steel USS General Purpose Flat Washer	10
12	33895	1/2" Yellow Zinc Finish High Alloy Medium Split Lock Washer	10
13	36410	1/2"-13 Yellow Zinc Finish Grade 8 Finished Hex Nut	10
14	37407	#10-24 Zinc Finish Steel with External Tooth Lockwasher K-Lock Nut	4
15	8 inch AccentLight	RA 8" Accent Light	2
16	94030	#10-24 x 1/2" ASTM F835 Hex Drive Zinc Finish Alloy Steel Button Socket Cap Screw	4



- 1 Unplug bumper wiring harness from the body harness
- 2 Remove (4) 13mm bolts each side of outer bumper support gussets
- 3 Remove under-run guards from both frame rails (18mm bolts)
- 4 Remove bolts from front by each tow hook to remove bumper
- 5 Remove factory tow hooks both sides using 15mm socket





- 1** Install frame brackets onto frame using the 3 nut plate(with bolts) and (2) 1/2" bolt tabs (with washers and nuts)
- 2** Tighten the nut plate to where the bracket is still adjustable.
- 3** Insert 1/2" bolt tabs into bumper and use retaining nuts to hold them in place.
- 4** Install lighting, and accessories before mounting the bumper.
- 5** Line the bolt tabs into the same location of each slot and mount the bumper on the truck. Secure it in place using the flat washer, split lock washer, and nut.
- 6** Adjust the front to back alignment first and tighten. Tighten the 3 nut plate first then the (2) bolt tabs second.
- 7** Adjust the left/right and up/down next. When aligned, tighten the bumper to bracket bolt tabs.

