

INSTALL INSTRUCTIONS

Evolution Rear Bumper

Product : 6112ER0X

Application : 2011-2016 Ford Super Duty

I WARNING

Read the instructions completely before beginning installation. Before tightening bolts, drilling or cutting where required, check to make sure there are no obstructions such as brake, fuel or electrical lines which may be damaged. Also keep in mind this is an after-market product and MAY require minor shimming and/or trimming, reaming, etc. for proper fit. Road Armor is not responsible for any damages to vehicle.

ⓘ IMPORTANT NOTICE

- Be sure to inspect and test fit your product to ensure proper fitment before having it coated, painted, bed lined, etc.
- Road Armor will not be responsible for the cost of coating your unit if any problems with fit or finish are not noted and addressed beforehand.

SAFETY FIRST!

- FOLLOW ALL INSTRUCTIONS, YOUR SAFETY AND THE SAFETY OF OTHERS IS MOST IMPORTANT.
- WEAR APPROPRIATE EYE PROTECTION AND EXERCISE CAUTION WHEN DRILLING / CUTTING

REQUIRED TOOLS

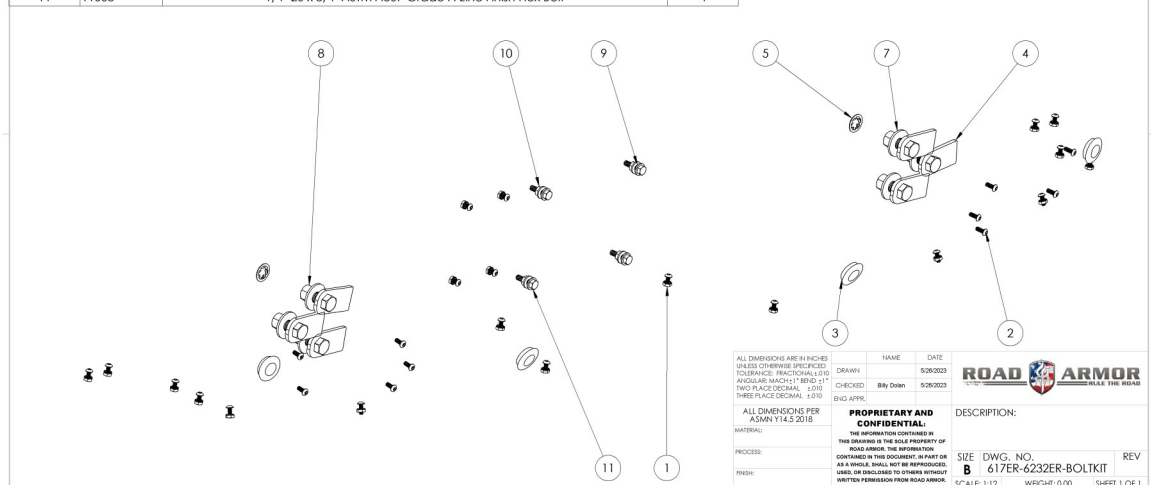
SAE & METRIC Socket set and wrenches

Screw drivers, pry tool, pick tool, pliers

RECOMMENDED TOOLS

INCLUDED HARD- WARE

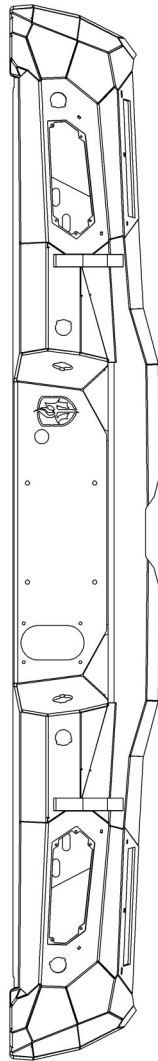
ITEM NO.	PART NUMBER	DESCRIPTION	QTY.
1	37407	# 10-24 Zinc Finish Steel with External Tooth Lockwasher K-Lock Nut	20
2	94030	# 10-24 x 1/2" ASTM F835 Hex Drive Zinc Finish Alloy Steel Button Socket Cap Screw	30
3	1.09 inch plug	1 1/16" Dome plug	4
4	11218-05078	1.5" Single Bolt Tab (ZINC)	6
5	0162849	1/2" Bolt 15/16" O.D. Zinc Pushnut Bolt Retainer	2
6	33895	1/2" Yellow Zinc Finish High Alloy Medium Split Lock Washer	6
7	33861	1/2" x 1.375" OD Thru-Hardened Yellow Zinc Finish Steel USS General Purpose Flat Washer	6
8	36410	1/2"-13 Yellow Zinc Finish Grade 8 Finished Hex Nut	6
9	33078	1/4" x 0.625" OD Low Carbon Zinc Finish Steel SAE General Purpose Flat Washer	8
10	1137410	1/4"-20 Zinc Finish Steel with External Tooth Lockwasher K-Lock Nut	4
11	11003	1/4"-20 x 3/4" ASTM A307 Grade A Zinc Finish Hex Bolt	4



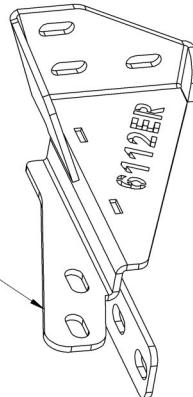
Welded Bumper/ Parachoques Soldado



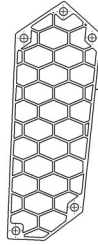
8" Accent Light
2x Per Bumper
With Control Module



6112ER-200



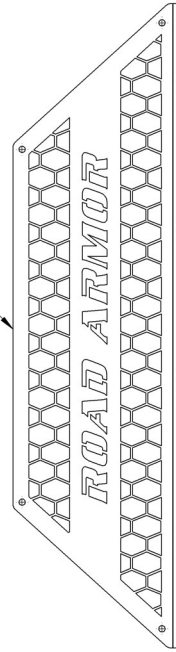
ER-MH



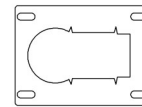
ER-MHM



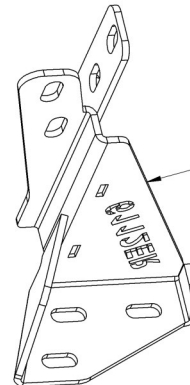
6112ER-HS



412-111

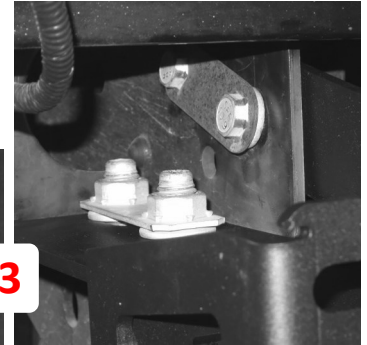
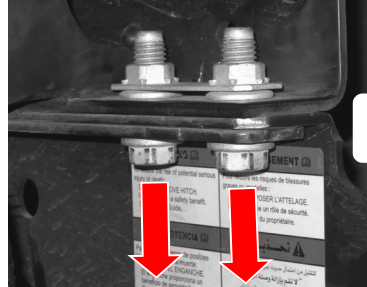
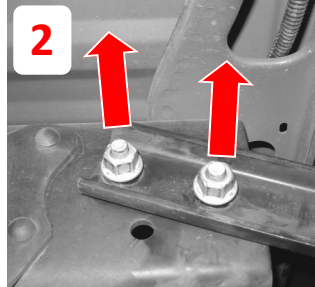


6112ER-200M



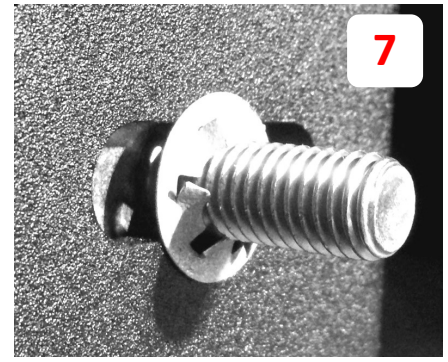
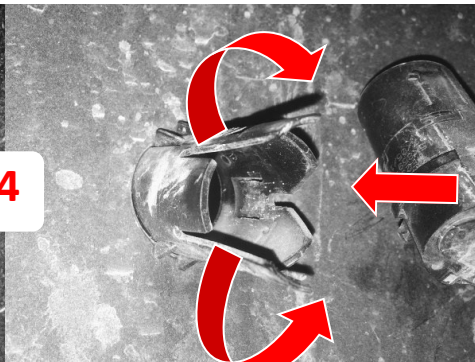
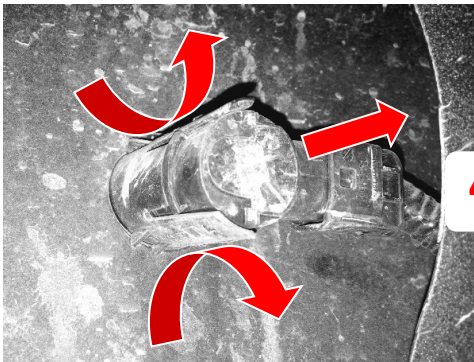
ALL DIMENSIONS ARE IN INCHES UNLESS OTHERWISE SPECIFIED DIMENSIONS ARE TO CENTER UNLESS SPECIFIED OTHERWISE TWO PLACE DECIMAL ±0.01 THREE PLACE DECIMAL ±0.005 ALL DIMENSIONS PER ASME Y14.5 2018	DRAWN 7/14/2023	CHECKED 7/14/2023	NAME Bilal Dahan	DATE 7/14/2023
PROPRIETARY AND CONFIDENTIAL: THE INFORMATION CONTAINED IN THIS DOCUMENT IS THE SOLE PROPERTY OF ROAD ARMOR. THE INFORMATION CONTAINED IN THIS DOCUMENT IS PART OF A WHOLE, SHALL NOT BE REPRODUCED, COPIED, OR TRANSMITTED IN ANY FORM OR BY ANY MEANS, WITHOUT WRITTEN PERMISSION FROM ROAD ARMOR.				
DESCRIPTION: 2011-16 FORD SD EVOLUTION REAR				
SIZE B	DWG. NO. 6112ER08 SHIPPING	REV	SCALE: 1:12 WEIGHT: 103.53 SHEET 1 OF 1	

- 1** Unplug bumper wiring harness from body harness.
- 2** Remove nuts and double bolt plate both sides, then remove OE bumper.
- 3** Remove 2 bolts from Trailer Hitch each side as shown and fit up Road Armor bracket re-using the OEM hardware.



- 4** Remove bumper harness including all sensors and plugs. Note which sensor housing went where as these are keyed and will only fit one way.
- 5** Install frame brackets onto frame using factory hardware. (Tighten just enough so that the bracket is still adjustable)
- 6** Install factory license plate lights, sensors (if equipped), license plate, step plate, and hitch plug.
- 7** Install 1/2 bolt tabs onto bumper and secure with 1/2" retaining nuts. Install Aftermarket Lights.

NOTE Install Bolt Tabs Before Aftermarket Lights (Much harder to do after lights are installed)



- 8** Mount bumper on truck and fasten with 1/2" hardware (flat washer, spring washer, and nut) (Tighten just enough so that the bumper is able to move)
- 9** Adjust front/back alignment first and tighten brackets to frame
- 10** Adjust left/right and up/down, then tighten frame bracket to bumper bolt tabs.
- 11** Attach wiring harness from bumper to truck. Then secure any loose wiring that may be hanging. Install mesh using #10-24 hardware



Finished!

