

# INSTALL INSTRUCTIONS

## Jeep Identity Rear Full-Width Bumper With Rock Slider/ Steps

Product : 5203DR0B

Application : 2020+ JEEP GLADIATOR JT

## I WARNING

**Read the instructions completely before beginning installation. Before tightening bolts, drilling or cutting where required, check to make sure there are no obstructions such as brake, fuel or electrical lines which may be damaged. Also keep in mind this is an after-market product and MAY require minor shimming and/or trimming, reaming, etc. for proper fit. Road Armor is not responsible for any damages to vehicle.**

**IMPORTANT NOTICE**

- **Be sure to inspect and test fit your product to ensure proper fitment before having it coated, painted, bed lined, etc.**
- **Road Armor will not be responsible for the cost of coating your unit if any problems with fit or finish are not noted and addressed beforehand.**

# SAFETY FIRST!

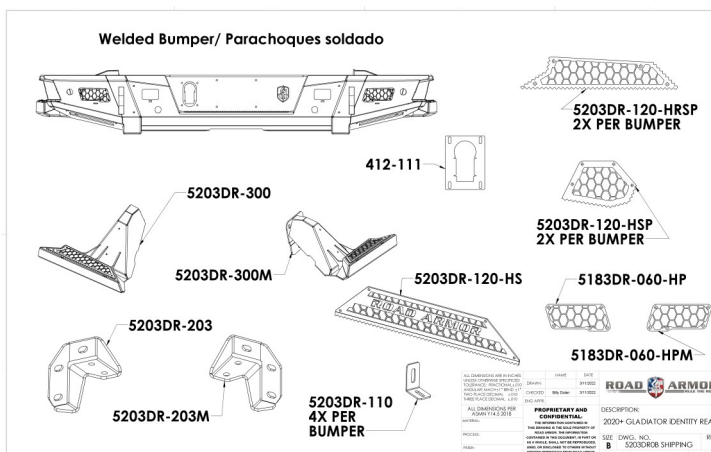
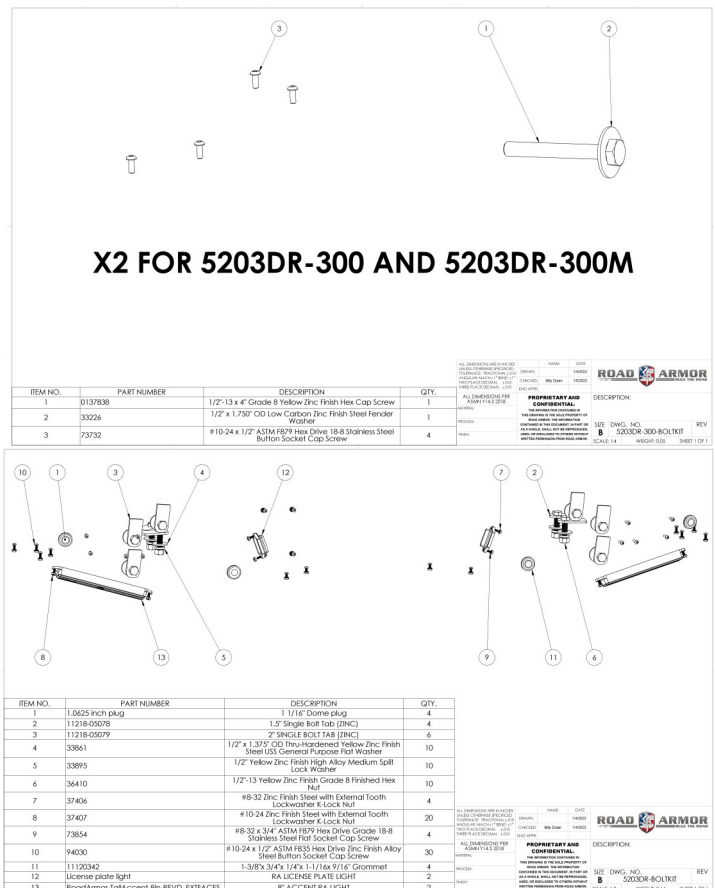
- FOLLOW ALL INSTRUCTIONS, YOUR SAFETY AND THE SAFETY OF OTHERS IS MOST IMPORTANT.
- WEAR APPROPRIATE EYE PROTECTION AND EXERCISE CAUTION WHEN DRILLING / CUTTING

## REQUIRED TOOLS

## Metric and SAE Socket Sets and Wrenches

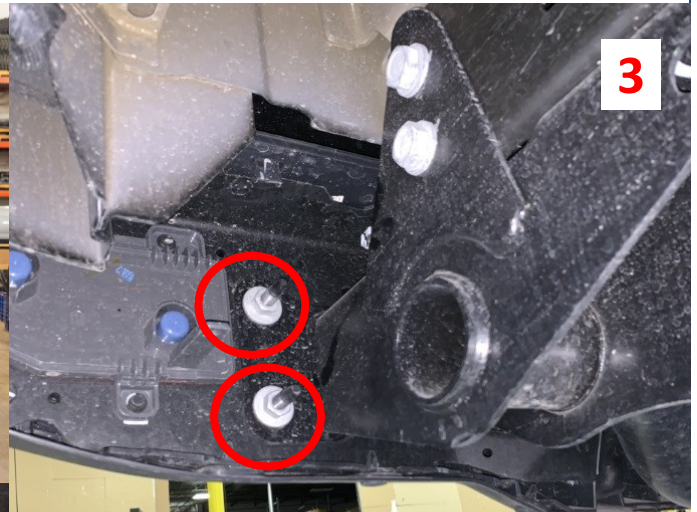
Allen Set

## INCLUDED HARDWARE



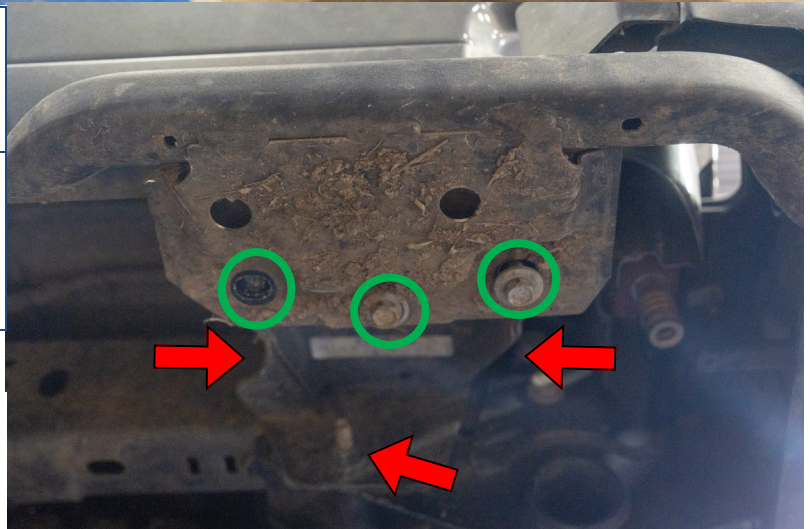


- 1 Disconnect the rear bumper harness, release the clips holding the bumper end of the harness to the Jeep. Connector is located inside the driver side hitch of the Jeep. Remove hitch harness and plug from bumper.
- 2 Using a 16mm socket, remove license plate and 2 bolts securing the center of bumper to hitch.
- 3 Using a 16mm socket, remove 2 bolts securing the bumper outer mounting brackets to the rear hitch from ea. side.
- 4 Pull off factory bumper and set aside.
- 5 Remove factory recovery hooks using 21mm socket; 2 bolts on the top, through the hitch.



- 6 If equipped, disassemble rear bumper, carefully remove all sensors and harnesses. \*\*Note sensor location\*\*

- 7 If equipped, remove Bed Slider Steps (Red)... Easier to access top bolts if step/slider part is removed first (Green), but not necessary.



**\*\*DISASSEMBLY COMPLETE\*\***



5	<b>If equipped:</b> Insert 4 kit grommets into bumper holes followed by all sensors and harness. <b>**Original sensor location**.</b> If no sensors, use provided plugs to fill cutouts.
6	Install 6 - 2" bolt tabs through bumper using the included keeper washers. Use a 3/4" deep socket to push the washers over the threads.
7	Install both bumper brackets onto outside of hitch as shown below. Use 2 - 1 1/2" bolt tabs to secure each bracket to hitch using a washer, lock washer and nut over each bolt.
8	Install all Lights, Bolt Tabs, Step Plates (Including Bed Slider/Steps), License and Receiver Plug.

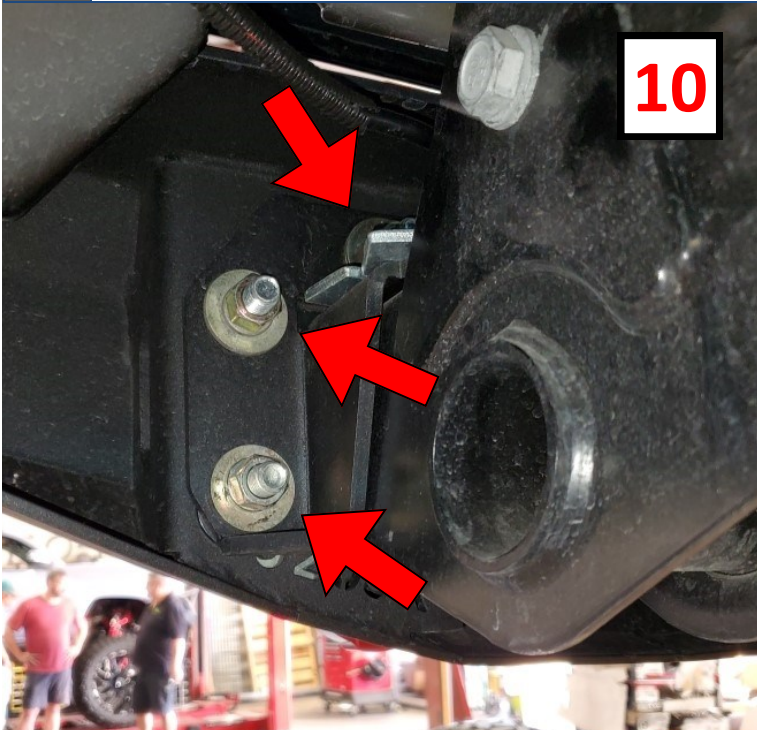




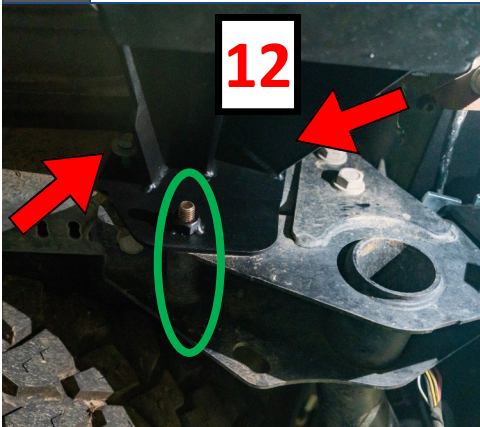
**9** Install Identity Rear Bumper by sliding it onto Frame and loosely put Washer, Lock washer, and Nut.

**10** Adjust Fitment of Bumper on Vehicle. Once desired fitment is reached, tighten all bolts.

**11** **\*\*Note\*\*** If Plugs for Sensor Holes are too small... Run a zip-tie through the back side.



**12** Install Side Step/Rock Slider by using the top 2 Factory Bolts (Red) and the Provided 4 inch long Bolt (Green)



**FINISHED!**

