



INSTALL INSTRUCTIONS

Jeep JL / JT Front Full-Width Bumper

RUBICON: 5183DF0B(BASE), 5183DF3B(SM-PRERUNNER)

SPORT / SAHARA: 5184DF0B(BASE), 5184DF3B (SM-PRERUNNER)

I WARNING

Read the instructions completely before beginning installation. Before tightening bolts, drilling or cutting where required, check to make sure there are no obstructions such as brake, fuel or electrical lines which may be damaged. Also keep in mind this is an after-market product and MAY require minor shimming and/or trimming, reaming, etc. for proper fit. Road Armor is not responsible for any damages to vehicle.

IMPORTANT NOTICE

- Be sure to inspect and test fit your product to ensure proper fitment before having it coated, painted, bed lined, etc.
- Road Armor will not be responsible for the cost of coating your unit if any problems with fit or finish are not noted and addressed beforehand.

SAFETY FIRST!

- FOLLOW ALL INSTRUCTIONS, YOUR SAFETY AND THE SAFETY OF OTHERS IS MOST IMPORTANT.
- WEAR APPROPRIATE EYE PROTECTION AND EXERCISE CAUTION WHEN DRILLING / CUTTING

REQUIRED TOOLS

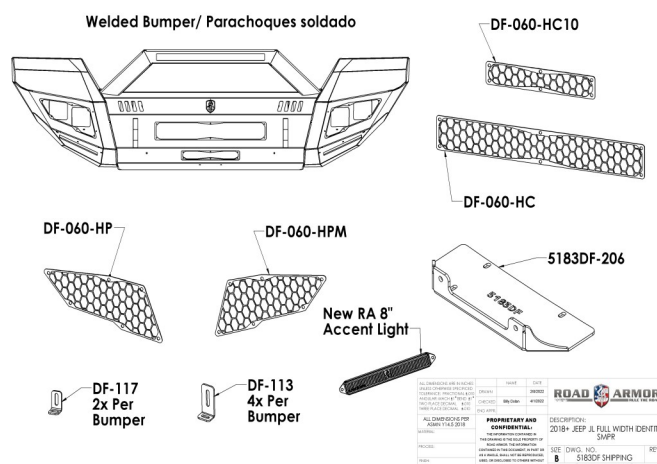
Metric and SAE Socket Sets and Wrenches

Phillips Screwdriver

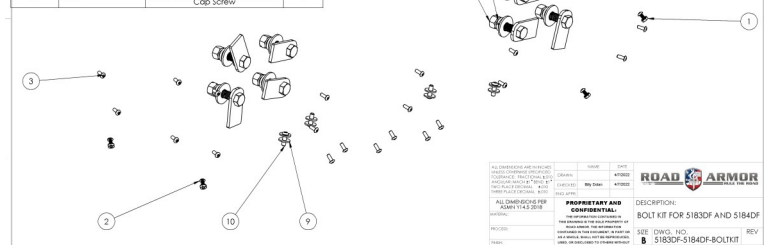
Needle Nose Pliers, Small Pry Bar or Large Flathead Screwdriver

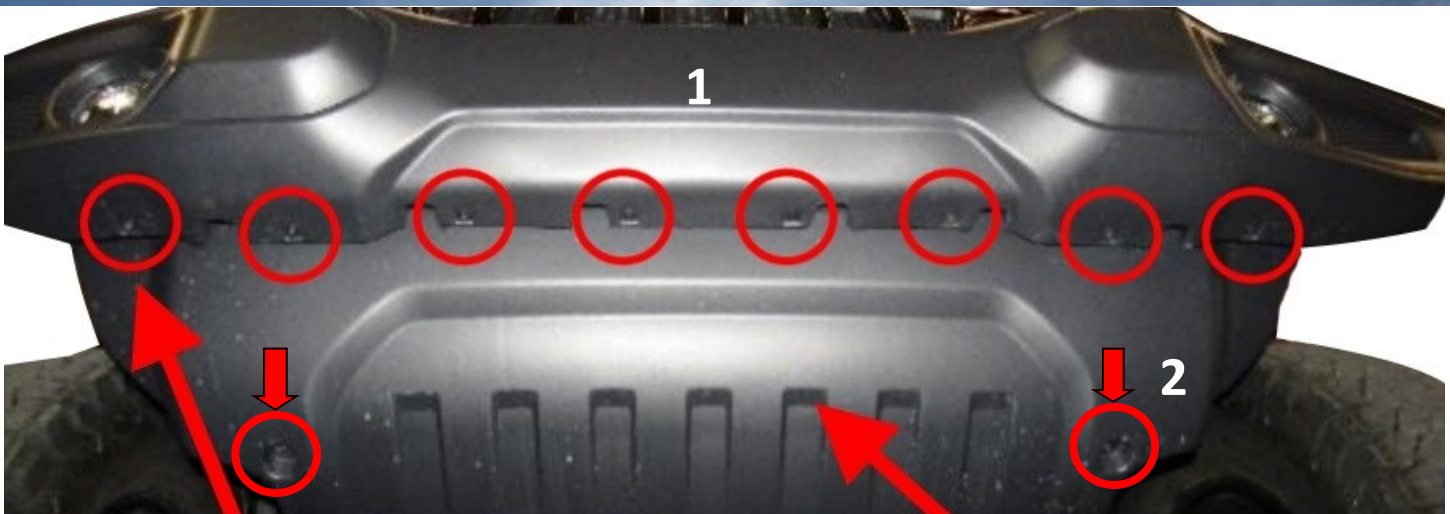
9/16 Drill Bit or Step Bit

INCLUDED HARDWARE AND ACCESSORIES



ITEM NO.	PART NUMBER	DESCRIPTION	QTY.
1	37407	#10-24 Zinc Finish Steel with External Tooth Lockwasher & Lock Nut	4
2	94030	#10-24 x 1/2" ASTM F835 Hex Drive Zinc Finish Alloy Steel Button Socket Cap Screw	4
3	1173732	#10-24 x 1/2" ASTM F879 Hex Drive 18-8 Stainless Steel Button Socket Cap Screw	24
4	11219-05078	1.5" Single Bolt Tap (ZNC)	8
5	0162849	1/2" Bolt 15/16" O.D. Zinc Plated Nut Bolt Retainer	4
6	33895	1/2" Yellow Zinc Finish High Alloy Medium Split Lock Washer	8
7	33861	1/2" x 1.315" OD Threaded Yellow Zinc Finish USS General Purpose Flat Washer	8
8	36410	1/2"-13 Yellow Zinc Finish Grade 8 Finished Hex Nut	8
9	71014	1/4" x 0.688" OD 18-8 Stainless Steel Large OD Flat Washer	8
10	94051	1/4"-20 x 3/4" ASTM F835 Hex Drive Zinc Finish Alloy Steel Button Socket Cap Screw	4





- 1** Unscrew the eight (8) plastic screws in the center of the retainer clips securing the factory air dam to the bottom of the bumper using a phillips screw driver.

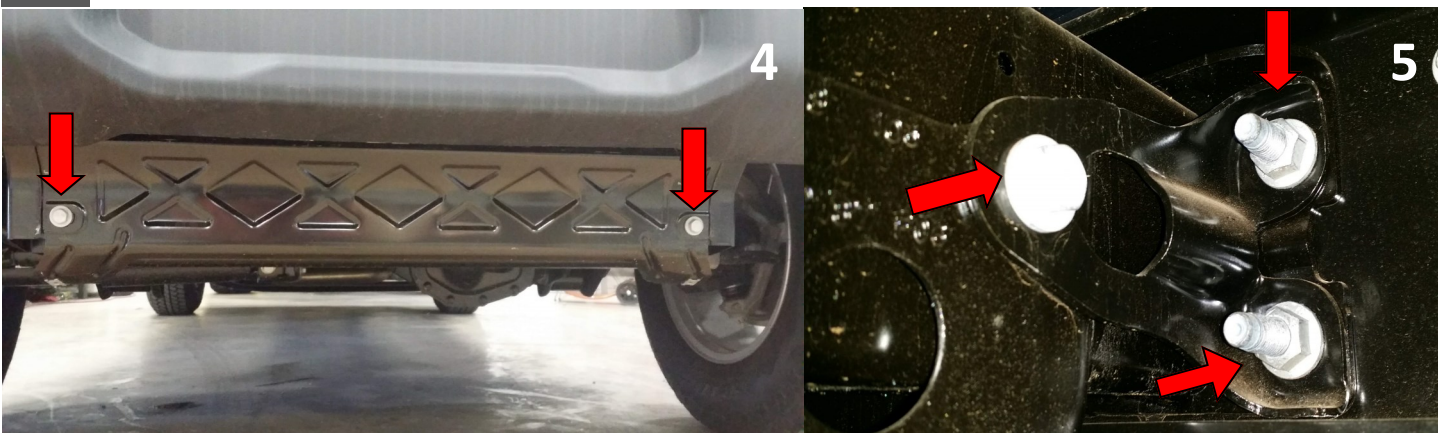
TIP If the screws just spin use a flathead screwdriver or small pry bar to pop them out.



- 2** Unscrew two (2) bolts on the bottom side of the front splash shield and remove.

- 3** Unplug main bumper harness from outside passenger frame rail.

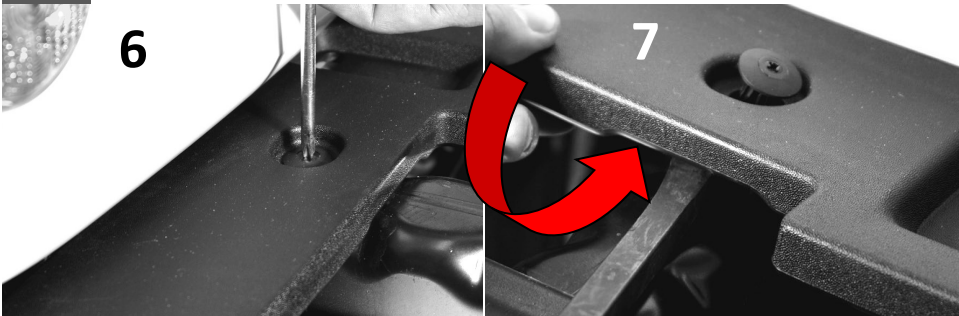
- 4** Unscrew two (2) bolts on the bottom side of the front skid and remove.



- 5** Remove the two nuts one bolt holding the factory bumper and stiffeners on, four (4) on each side of the frame using an 18mm socket and/or wrench. Keep ALL stiffeners for installing Road Armor Bumper.

6 Remove factory bumper and set aside.

7 Now remove the plastic top plate using a phillips screwdriver as in Steps 1 and 2. Again if the screw simply spins, employ a flathead screwdriver or small pry bar as shown.



8 Gather a drill, a 9/16-in drill bit or a Step Bit for the next Step.



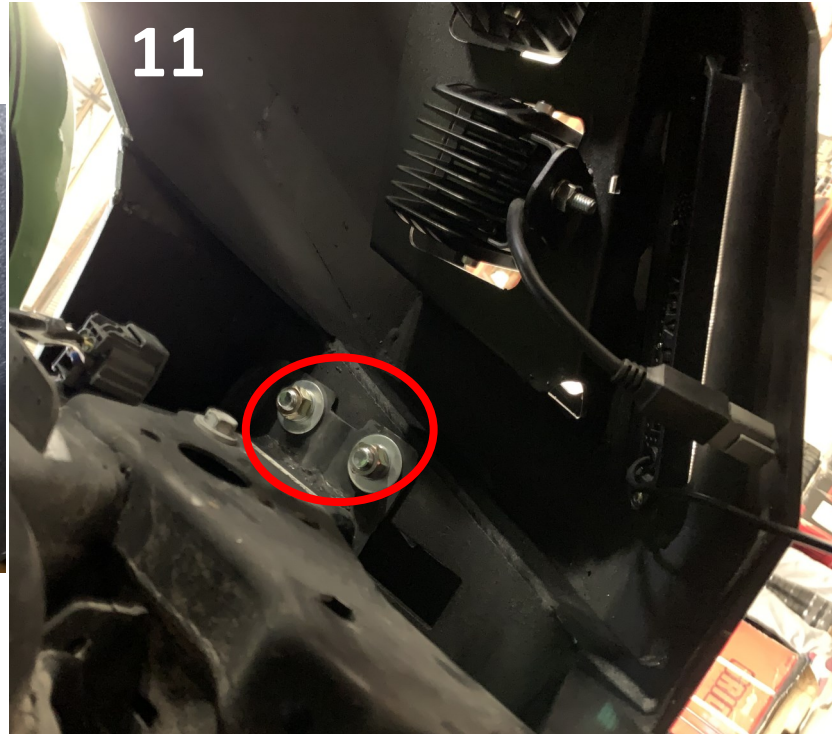
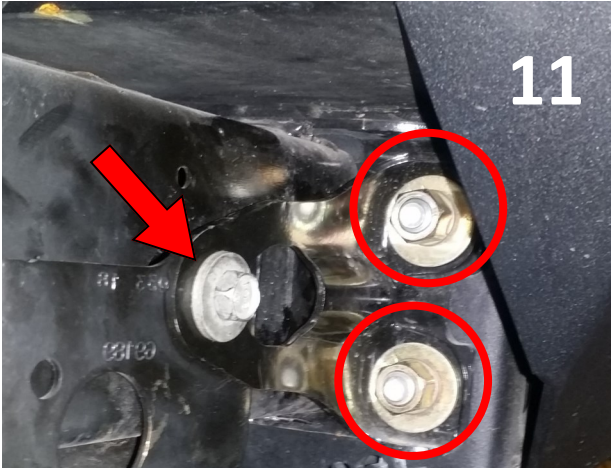
9 Drill out the eight factory holes on the frame as circled below to 9/16-in. (Step Bit Recommended)



10 Install Light Bars, Cube Lights, and Accent Lights. Install Bolt Tabs with Push Nuts



- 11** Install bumper onto frame-horn lining up ALL holes and each 1/2" bolt tabs through frame. Then place the factory inner and outer stiffeners, which you were instructed to set aside in Step 5, followed by a washer (**Large**), lock-washer and nut on the backside finger tight.



- 12** Once all the bolts are installed and bumper is properly adjusted; tighten all bolts at this time.
- 13** If installing a winch, install Fairlead onto winch plate. Place winch plate on top of bumper and place winch on top lining up the holes. Fully tighten. Install Mesh plates.

FINISHED!

13

