



# **INSTALL INSTRUCTIONS**

**Application : 2007-2018 Jeep Wrangler JK**

**JK FRONT FENDER FLARE: 507AFF0B**

## I WARNING

Read the instructions completely before beginning installation. Before tightening bolts, drilling or cutting where required, check to make sure there are no obstructions such as brake, fuel or electrical lines which may be damaged. Also keep in mind this is an after-market product and MAY require minor shimming and/or trimming, reaming, etc. for proper fit. Road Armor is not responsible for any damages to vehicle.

## i IMPORTANT NOTICE

- Be sure to inspect and test fit your product to ensure proper fitment before having it coated, painted, bed lined, etc.
- Road Armor will not be responsible for the cost of coating your unit if any problems with fit or finish are not

## SAFETY FIRST!

- FOLLOW ALL INSTRUCTIONS, YOUR SAFETY AND THE SAFETY OF OTHERS IS MOST IMPORTANT.
- WEAR APPROPRIATE EYE PROTECTION AND EXERCISE CAUTION WHEN DRILLING / CUTTING

## REQUIRED TOOLS

Metric and SAE Socket Sets and Wrenches      Wire Crimps  
 Cut-Off Wheel



## INCLUDED HARDWARE

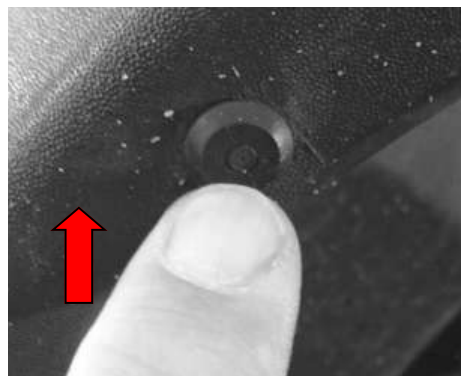
- |                                     |                                      |
|-------------------------------------|--------------------------------------|
| (2) 8" Accent Lights and (1) Module | (2) 1/4 x 1" Self Drilling Screw     |
| (4) 10-24x1/2" Bolts                | (6) 5/16" U-Nuts                     |
| (4) 10-24 Flange Nuts               | (6ft) 22 Gauge Black Wire            |
| (6) 5/16"x1" Carriage Bolts         | (3) 22 Gauge Displacement Connector  |
| (10) 5/16"x1" Button Bolts          | (3) 22 Gauge Butt Connector          |
| (10) 5/16" Flange Nuts              | (2) 22 Gauge 1/4 Ring Stud Connector |
| (6) 5/16" Push Retainer Washers     | (3/4") Amber Reflective Tape         |
| (10) 5/16" Washers                  | (1) PSG FENDER FLARE                 |
| 120" Rubber Edge Trim               | (1) DVR FENDER FLARE                 |
| (1) PSG FENDER FLARE Bracket        | (1) DVR FENDER FLARE Bracket         |



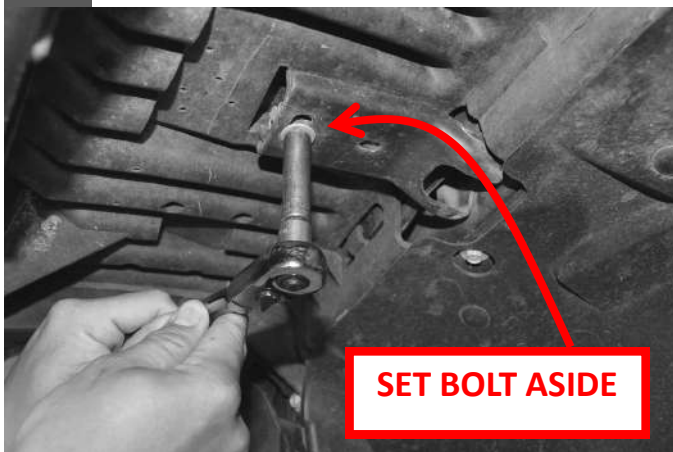
**NOTE** If reusing the factory liners, follow steps below.

- 1 Using a pin punch, small screw driver, straight pick tool, awl or scribe, push in center of the six (6) plastic clips around rim of fender to release them.

Then use a panel clip pliers or pry tool to grab the clip from behind and remove. A flat wedge pry bar or dykes will work in a pinch if you don't have the proper tool.

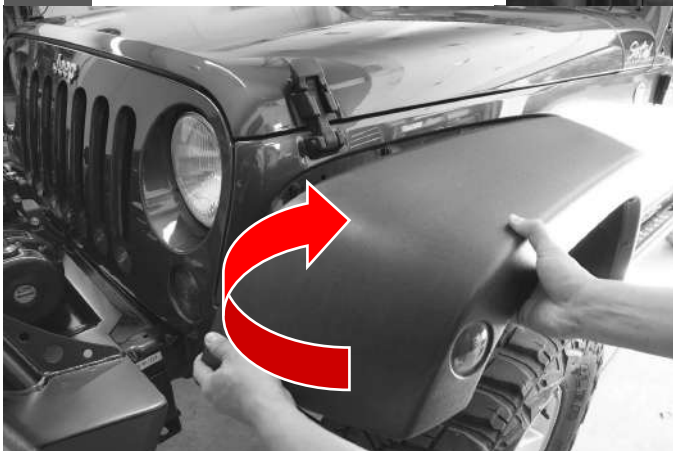
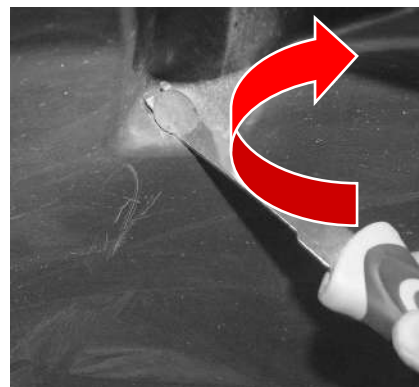
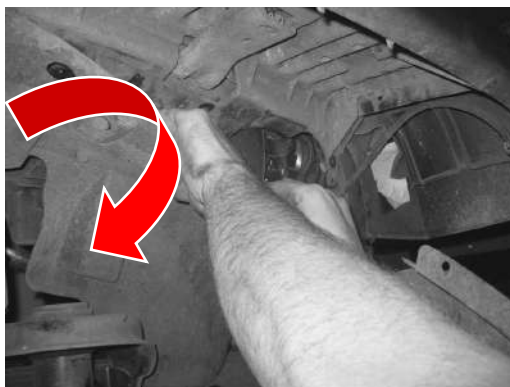


- 2 Remove six (6) 10mm Bolts inside fender well and all plastic fasteners. Keep all bolts for future use.



- 3 Unplug Marker light and harness.

- 4 Remove all plastic retainers with removal tool if you own one, or carefully with a pair of dykes or a thin pry bar. Alternatively, just grab and pull the whole fender well.



- 5 Remove Factory Flare by pulling sharply from the front corner by the grill upward and outward.

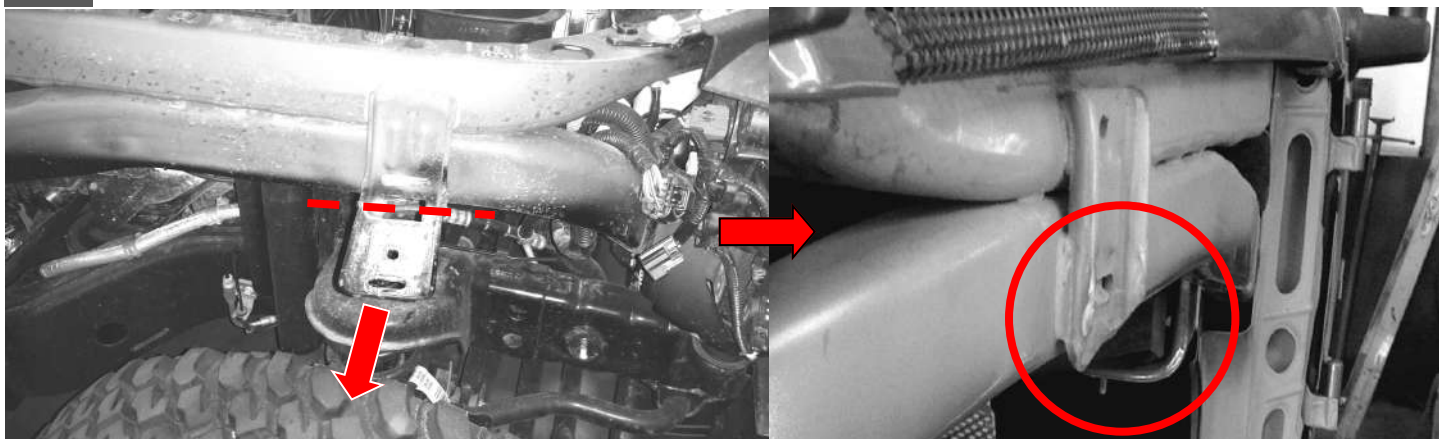
It really is easier than you think and don't be alarmed by the popping sounds.

This is easier to do now than after Fender is removed.

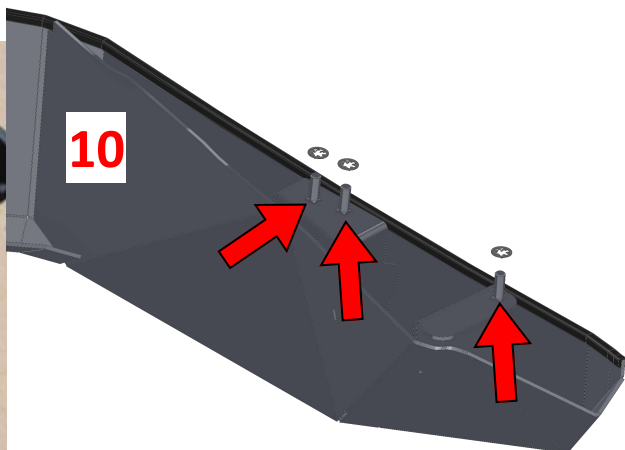
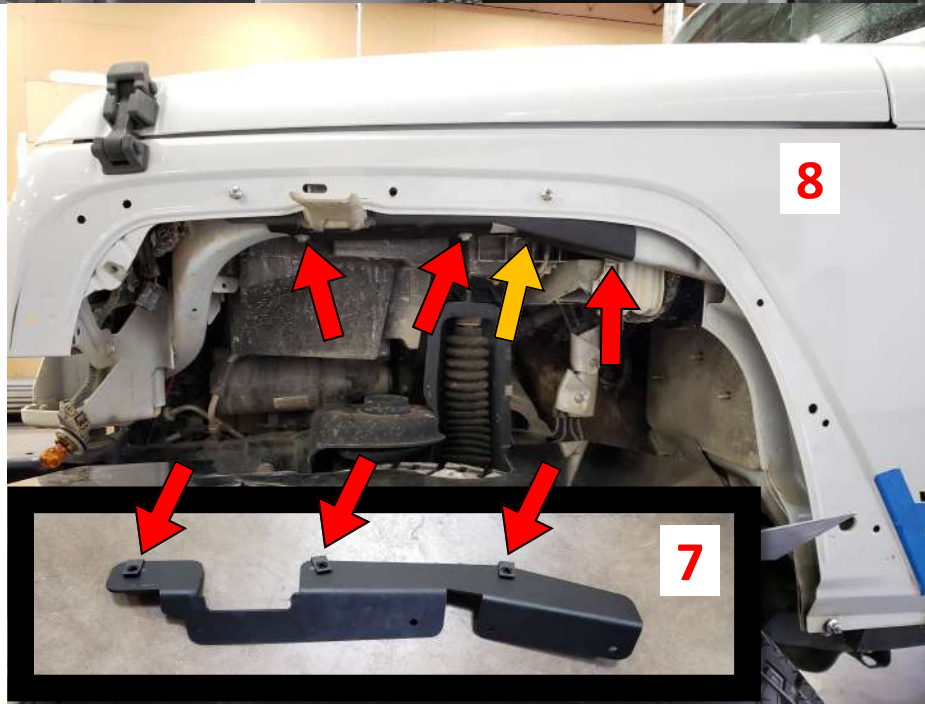
**BE SURE YOU HAVE UNPLUGGED MARKER LIGHT!**



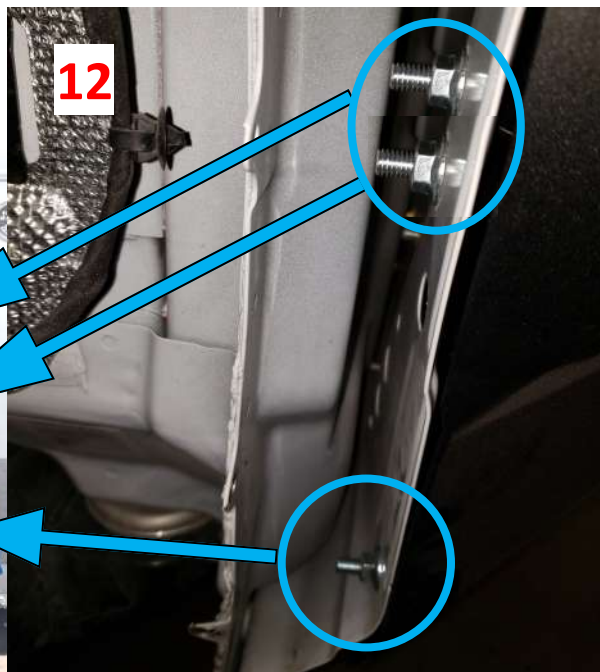
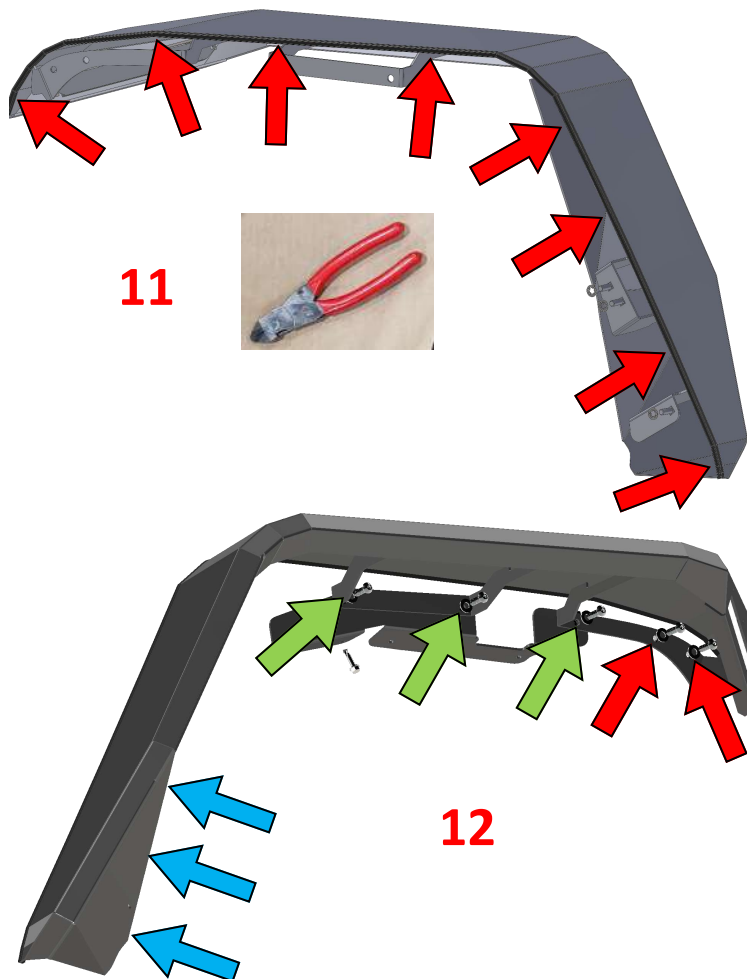
- 6** Cut off upper fender support material as shown with either a hacksaw, sawzall or cutoff tool.  
Then spray paint the exposed raw steel to protect from rust.



- 7** Install 3 - 5/16" U-Nuts onto fender support bracket.
- 8** Install support bracket onto fender using OEM liner bolts (Red Arrows). Install one 1/4" Self-Drilling bolt into bracket. (Orange Arrow)
- 9** Install 8" accent light into RA fender flares using 2 - #10-24 bolts and flange nuts.
- 10** Assemble front fender using 3 - 5/16" carriage bolts and push retaining washer.

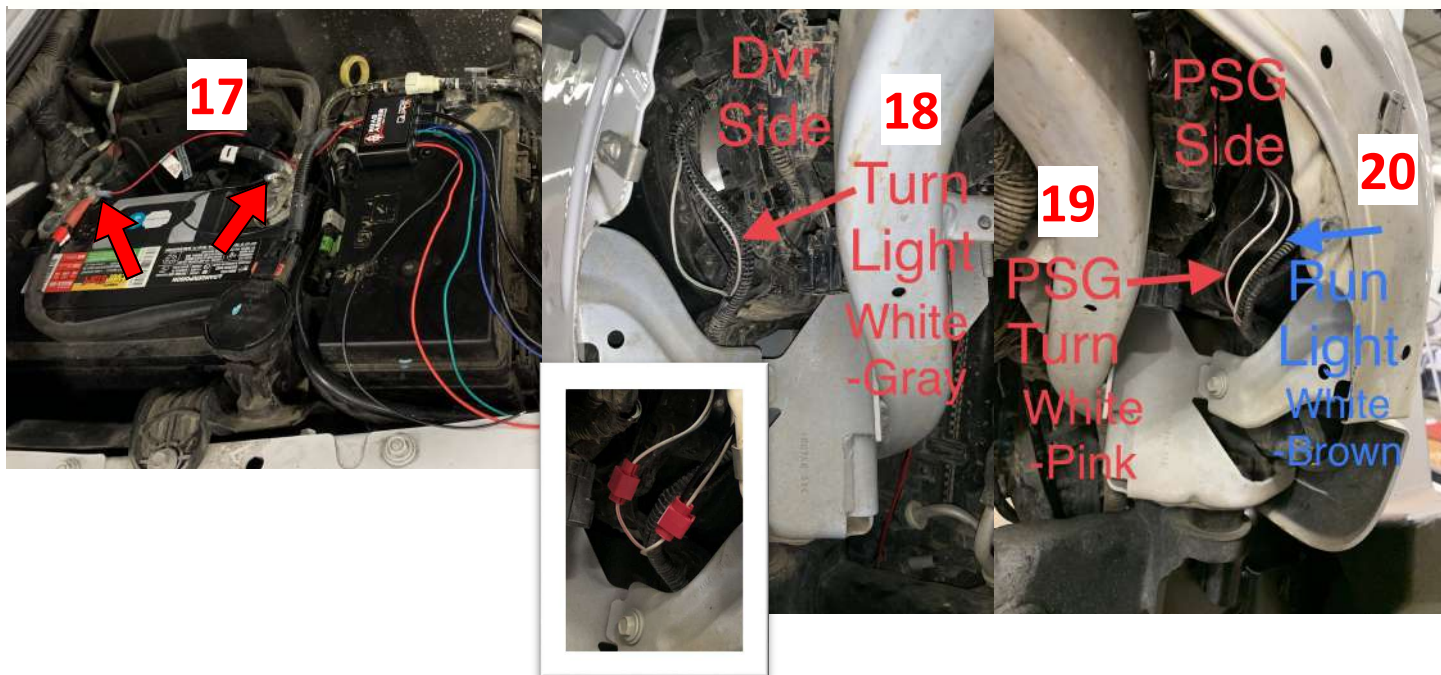
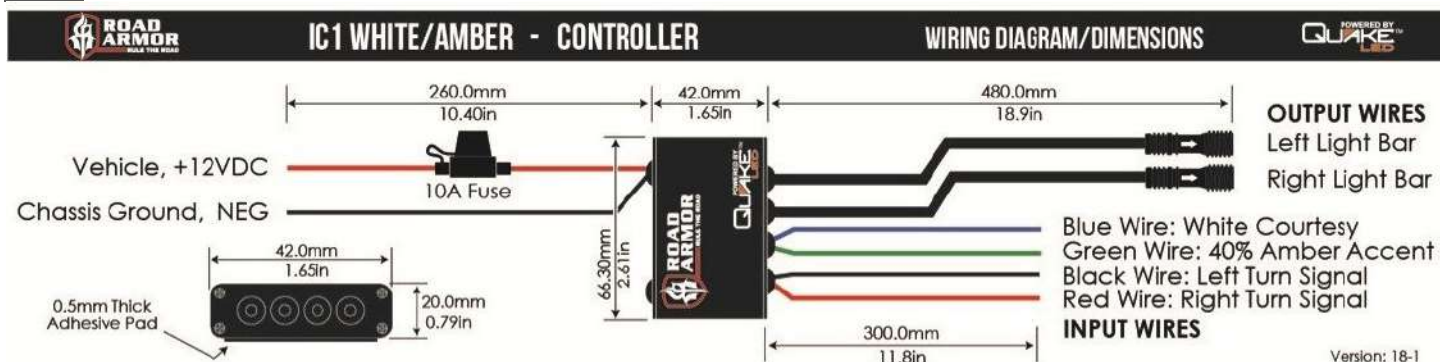


- 11** Install edge trim along main fender edge to protect body. (Trim ribbed side on bottom.)
- 12** Install fender flare by inserting the 3 - 5/16" carriage bolts and flange nuts into bottom rear holes. (Blue Arrow)
- 13** Loosely installing 2 - 5/16" bolt and flange nuts (Red Arrows) through fender flare "front" to hold/support fender flare onto OE fender while installing the remaining 3 - 5/16" bolts through the fender support bracket. (Green Arrow)
- 14** Once fender is aligned, TIGHTEN all 5/16" hardware.
- 15** Push kit edge trim against body for finished look.





- 16 Route and secure both accent wires into engine bay, near fuse box. (Behind Grille)
- 17 Install 1/4" Ring Terminal to both **Red (+)** & **Black (-)** wires, connect terminal ends to battery.
- 18 Using 22 gauge wire and butt connector, connect extension wire from **BLACK**-left turn signal (at module) to the drivers side marker light harness (in grille), connect left signal wire using displacement connector directly to the white / gray strip wire. (verify signal)
- 19 Using 22 gauge wire and butt connector, connect extension wire from **RED**-right turn signal (at module) to the passenger side marker light harness (in grille), connect right signal wire using displacement connector directly to the white / pink strip wire. (verify signal)
- 20 Using 22 gauge wire and butt connector, connect extension wire from **BLUE**-courtesy light / DRL or **Green**-Amber (at module) to the passenger side marker light harness (in grille), connect DRL or Amber signal wire using displacement connector directly to the white / brown strip wire.



### NOTE

**\*\*If Purchased, Install Road Armor 507LFF0Z Inner Fender liners at this time.\*\***

**21** Fit up the inner fender well and mark plastic where it sticks out from the fender using a pencil, sharpie or paint pen, you will be trimming the excess plastic in the next step so grab a box cutter or some shears.

**22** Now remove the inner fender well and begin cutting plastic. This may take a couple tries before it fits just right. Once you are satisfied re-attach it using the 10mm bolts with supplied fender washers and the plastic retainer clips removed earlier.



**FINISHED!**