



# INSTALL INSTRUCTIONS

## Brush Guard

Product : 4251-BRSH

Application : 2019-2024, 2025-2026 Dodge Ram  
1500

## I WARNING

Read the instructions completely before beginning installation. Before tightening bolts, drilling or cutting where required, check to make sure there are no obstructions such as brake, fuel or electrical lines which may be damaged. Also keep in mind this is an after-market product and **MAY** require minor shimming and/or trimming, reaming, etc. for proper fit. Road Armor is not responsible for any damages to vehicle.

## i IMPORTANT NOTICE

- Be sure to inspect and test fit your product to ensure proper fitment before having it coated, painted, bed lined, etc.
- Road Armor will not be responsible for the cost of coating your unit if any problems with fit or finish are not noted and addressed beforehand.

## SAFETY FIRST!

- FOLLOW ALL INSTRUCTIONS, YOUR SAFETY AND THE SAFETY OF OTHERS IS MOST IMPORTANT.
- WEAR APPROPRIATE EYE PROTECTION AND EXERCISE CAUTION WHEN DRILLING / CUTTING

## REQUIRED TOOLS

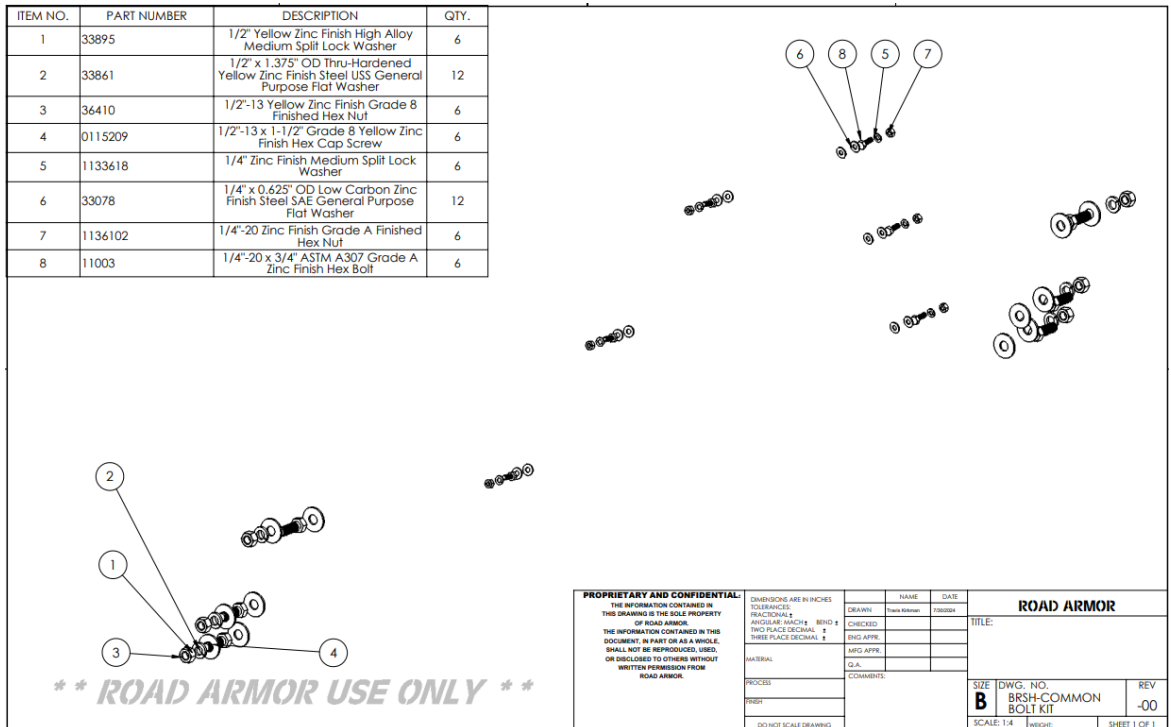
SAE & METRIC Socket set and wrenches  
Screw drivers, pry tool, pick tool, pliers

## RECOMMENDED TOOLS

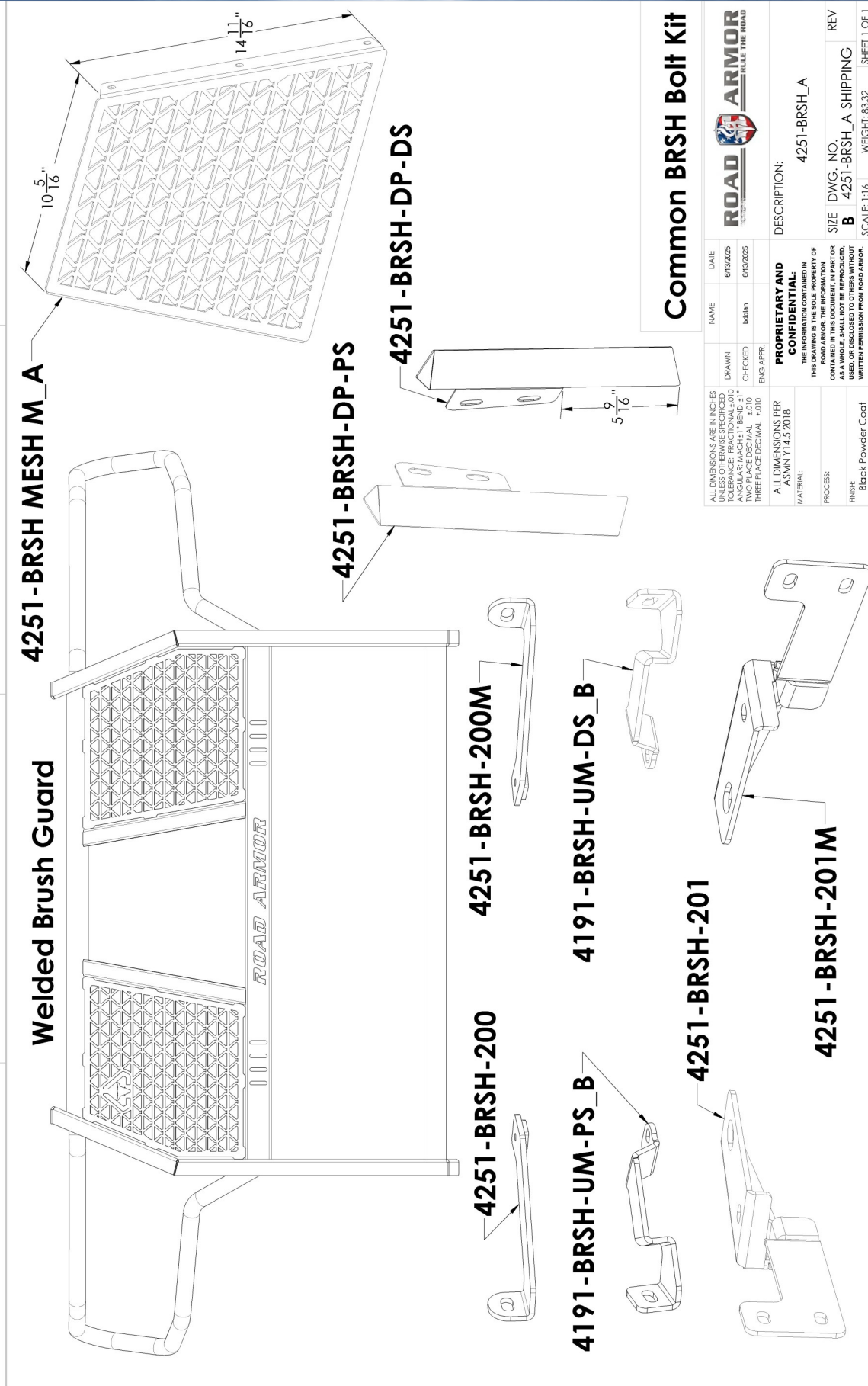
Adjustable Table Cart/Table/Pallet Lift or Hoist  
Impact driver

## INCLUDED HARDWARE

ITEM NO.	PART NUMBER	DESCRIPTION	QTY.
1	33895	1/2" Yellow Zinc Finish High Alloy Medium Split Lock Washer	6
2	33861	1/2" x 1.375" OD Thru-Hardened Yellow Zinc Finish Steel USS General Purpose Flat Washer	12
3	36410	1/2"-13 Yellow Zinc Finish Grade 8 Finished Hex Nut	6
4	0115209	1/2"-13 x 1-1/2" Grade 8 Yellow Zinc Finish Hex Cap Screw	6
5	1133618	1/4" Zinc Finish Medium Split Lock Washer	6
6	33078	1/4" x 0.425" OD Low Carbon Zinc Finish Steel SAE General Purpose Flat Washer	12
7	1136102	1/4"-20 Zinc Finish Grade A Finished Hex Nut	6
8	11003	1/4"-20 x 3/4" ASTM A307 Grade A Zinc Finish Hex Bolt	6



<b>PROPRIETARY AND CONFIDENTIAL</b> THE INFORMATION CONTAINED IN THIS DRAWING IS THE SOLE PROPERTY OF ROAD ARMOR. THE INFORMATION CONTAINED IN THIS DOCUMENT IS PART OR AS A WHOLE, SHALL NOT BE REPRODUCED, USED, OR DISCLOSED TO OTHERS WITHOUT WRITTEN PERMISSION FROM ROAD ARMOR.		DIMENSIONS ARE IN INCHES TOLERANCES: FRACTIONAL ± DECIMALS: 1/16" ± TWO PLACE DECIMAL ± THREE PLACE DECIMAL ±	DRAWN: Tracy Anderson CHECKED: [ ] ENG APPR: [ ] MFG APPR: [ ] G.A.: [ ] COMMENTS: [ ]	NAME: [ ] DATE: 1/20/2014 <b>ROAD ARMOR</b> TITLE: [ ]
PROCESS: [ ] PREP: [ ] DO NOT SCALE DRAWING	SIZE: <b>B</b> DWG. NO.: BRSH-COMMON BOLT KIT SCALE: 1:4 WEIGHT: [ ]	REV: -00 SHEET 1 OF 1		



**Common BRSH Bolt Kit**

NAME	DATE	DESCRIPTION:
boban	6/13/2025	4251-BRSH_A
CHECKED	6/13/2025	SIZE DWG. NO.
ENG. APPR.		<b>B</b> 4251-BRSH_A SHIPPING
<b>PROPRIETARY AND CONFIDENTIAL:</b> THE INFORMATION CONTAINED IN THIS DRAWING IS THE SOLE PROPERTY OF ROAD ARMOR. IT IS TO BE USED AS A WHOLE. SHALL NOT BE REPRODUCED, COPIED, OR DISCLOSED TO OTHERS WITHOUT WRITTEN PERMISSION FROM ROAD ARMOR.		
ALL DIMENSIONS PER ASMN Y14.5 2018 MATERIAL: PROCESS: FINISH: Black Powder Coat		
SCALE: 1:1.6    WEIGHT: 83.32    SHEET 1 OF 1		

# Upper bracket identification

**4191-BRSH-UM-PB\_B upper bracket**  
**Passenger side for 2019-2024 models**

**4191-BRSH-UM-DR\_B upper bracket**  
**Drivers side for 2019-2024 models**

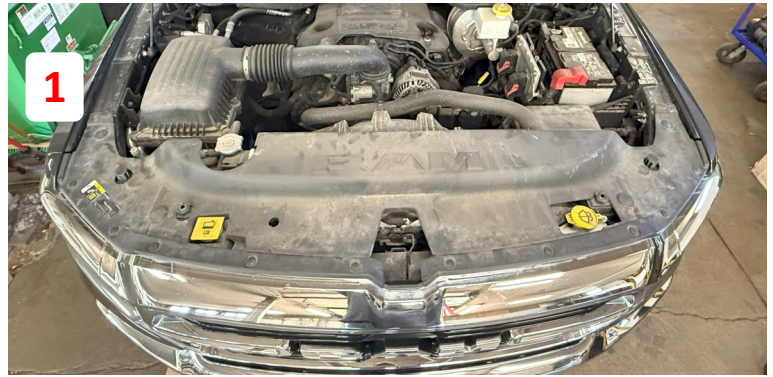
**Discard 4251-BRSH-200/4251-BRSH-200M**

**4251-BRSH-200 upper bracket**  
**Passenger side for 2025 models**

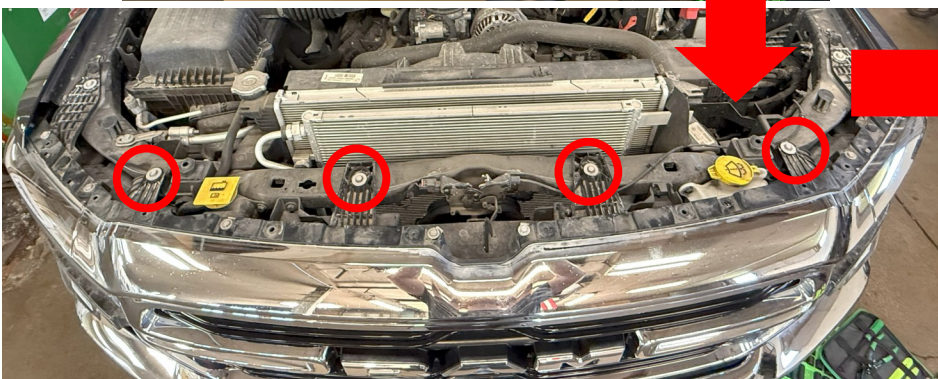
**4251-BRSH-200M upper bracket**  
**Drivers side for 2025 models**

**Discard 4191-BRSH-UM-PB\_B/ 4191-BRSH-UM-DR\_B**

- 1 Remove the Plastic Cover on top of the Grille.
- 2 Remove 4 Bolts in Wheel well and Pull Liner out of the way. Remove Bolt on the inside attaching Fascia to Quarter panel.
- 3 With Bolt removed, Pry Fascia off the Bracket then Pull Fascia off (Rest held in by clips).



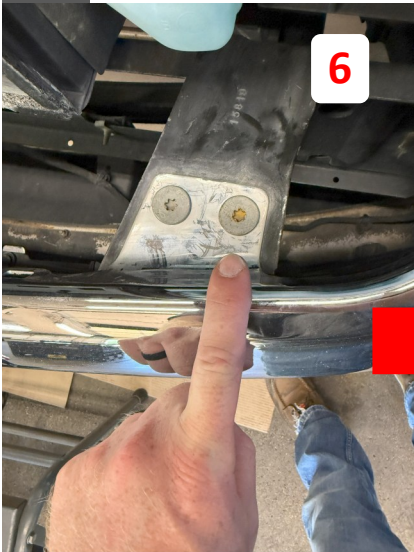
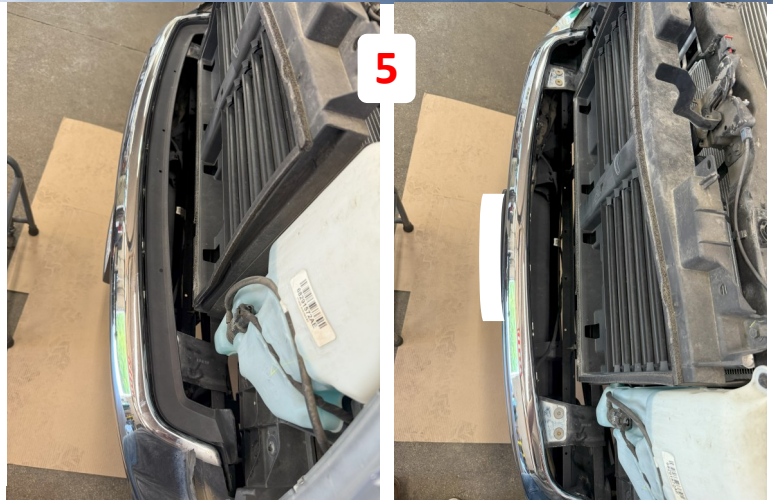
- 4 To Remove the Grille, Take off Top part as shown. Then, Unbolt the Grille from each side and from the Top.



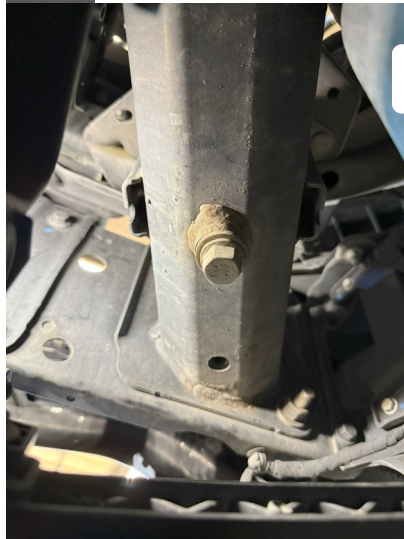
**5** With Grille Removed, Remove Top Plastic part of Bumper.

**6** Mount Upper Bracket (Use designated bracket for year range of Truck) to the Bumper as shown below.

**7** With Upper Brackets Installed, Cut the Plastic top piece to go around the Upper Brackets. Then reinstall.



**8** Remove Tow Hooks if equipped (If no Tow Hooks, remove Plastic Openings on Bumper where they would be). Mount Lower Bracket then Mount Tow Hooks.



- 9** Align the Upper and Lower Brackets and tighten. Reinstall the Grille.
- 10** Reinstall the Fascia on both sides along with the Wheel well liners.
- 11** Install Road Armor Brush Guard with the Brackets on the Inside of the Brush Guard Uprights.
- 12** If vehicle is equipped with sensors, install deflector plates to each side as shown below.



**Finished**

