



# INSTALL INSTRUCTIONS

**RAM TRX Front Stealth Bumper**

**Product : 4211FXX, 4211FXX-NW**

**Application : 2021+ Ram 1500**

## I WARNING

Read the instructions completely before beginning installation. Before tightening bolts, drilling or cutting where required, check to make sure there are no obstructions such as brake, fuel or electrical lines which may be damaged. Also keep in mind this is an after-market product and MAY require minor shimming and/or trimming, reaming, etc. for proper fit. Road Armor is not responsible for any damages to vehicle.

## i IMPORTANT NOTICE

- Be sure to inspect and test fit your product to ensure proper fitment before having it coated, painted, bed lined, etc.
- Road Armor will not be responsible for the cost of coating your unit if any problems with fit or finish are not noted and addressed beforehand.

## SAFETY FIRST!

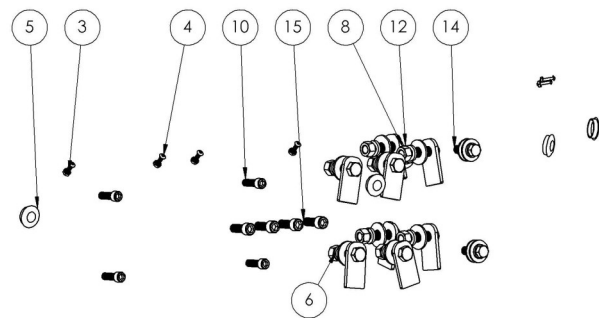
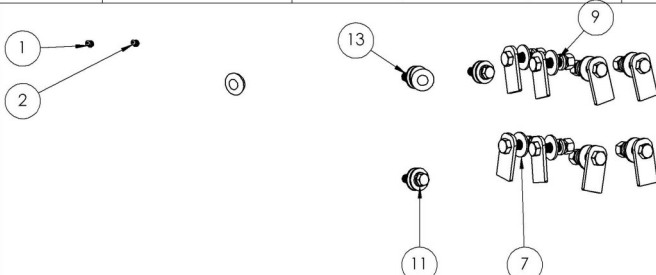
- FOLLOW ALL INSTRUCTIONS, YOUR SAFETY AND THE SAFETY OF OTHERS IS MOST IMPORTANT.
- WEAR APPROPRIATE EYE PROTECTION AND EXERCISE CAUTION WHEN DRILLING / CUTTING

## INCLUDED HARDWARE / BRACKETS

\*Must Purchase Outside Sensor Housings

(6833 5624 AC, 6833 5623 AC)

ITEM NO.	PART NUMBER	DESCRIPTION	QTY.
1	70921	#6-32 Grade 18-8 Stainless Steel with External Tooth Lock Washer K-Lock Nut	4
2	24020	#6-32 x 3/4" ASTM F835 Hex Drive Black Oxide Finish Alloy Steel Button Socket Cap Screw	4
3	37407	#10-24 Zinc Finish Steel with External Tooth Lockwasher K-Lock Nut	4
4	73734	#10-24 x 3/4" ASTM F879 Hex Drive Grade 18-8 Stainless Steel Button Socket Cap Screw	4
5	1.0625 inch plug	1 1/16" Dome plug	6
6	33895	1/2" Yellow Zinc Finish High Alloy Medium Split Lock Washer	16
7	33861	1/2" x 1.375" OD Thru-Hardened Yellow Zinc Finish Steel USS General Purpose Flat Washer	16
8	36410	1/2"-13 Yellow Zinc Finish Grade 8 Finished Hex Nut	16
9	11218-05078	1.5" Single Bolt Tab (ZINC)	16
10	93307	3/8"-16 x 1-1/4" ASTM A574 Hex Drive Zinc Finish Alloy Steel Socket Cap Screw	4
11	33894	7/16" Yellow Zinc Finish High Alloy Medium Split Lock Washer	6
12	1133860	7/16" x 1.250" OD Thru-Hardened Yellow Zinc Finish Steel USS General Purpose Flat Washer	12
13	1136408	7/16"-14 Yellow Zinc Finish Grade 8 Finished Hex Nut	6
14	0115159	7/16"-14 x 1-1/2" Grade 8 Yellow Zinc Finish Hex Cap Screw	6
15	93357	7/16"-14 x 1-1/4" ASTM A574 Hex Drive Zinc Finish Alloy Steel Socket Cap Screw	4



\*\* ROAD ARMOR USE ONLY \*\*

**PROPRIETARY AND CONFIDENTIAL:**  
 THE INFORMATION CONTAINED IN THIS DRAWING IS THE SOLE PROPERTY OF ROAD ARMOR.  
 THE INFORMATION CONTAINED IN THIS DOCUMENT, IN PART OR AS A WHOLE, SHALL NOT BE REPRODUCED, USED, OR DISCLOSED TO OTHERS WITHOUT WRITTEN PERMISSION FROM ROAD ARMOR.

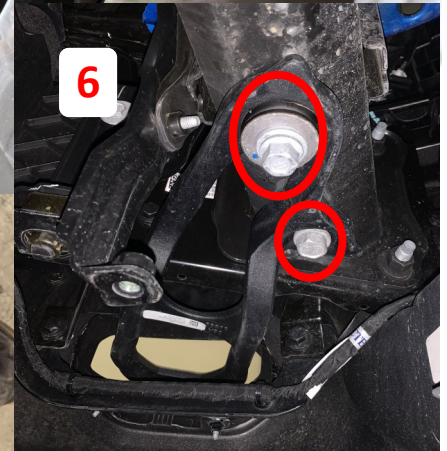
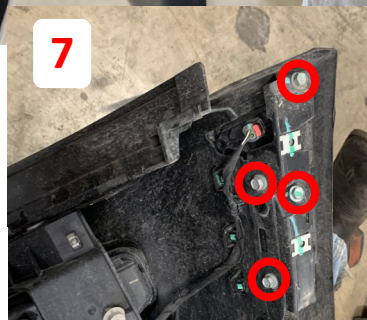
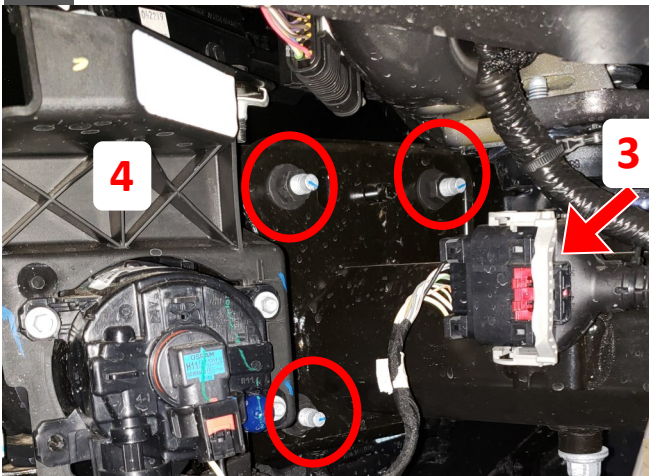
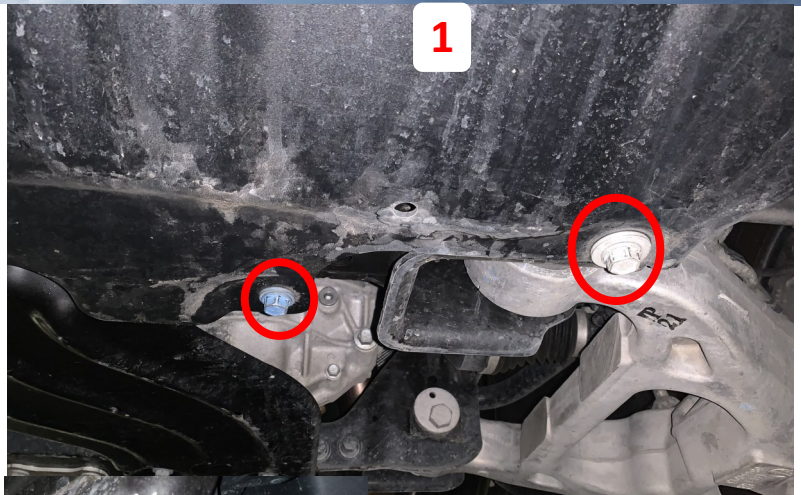


DATE	11/19/2021
DRAWN	
CHECKED	
ENG APPR	
MFG APPR	
Q.A.	
COMMENTS	
MATERIAL	
PROCESS	
FINISH	
DO NOT SCALE DRAWING	

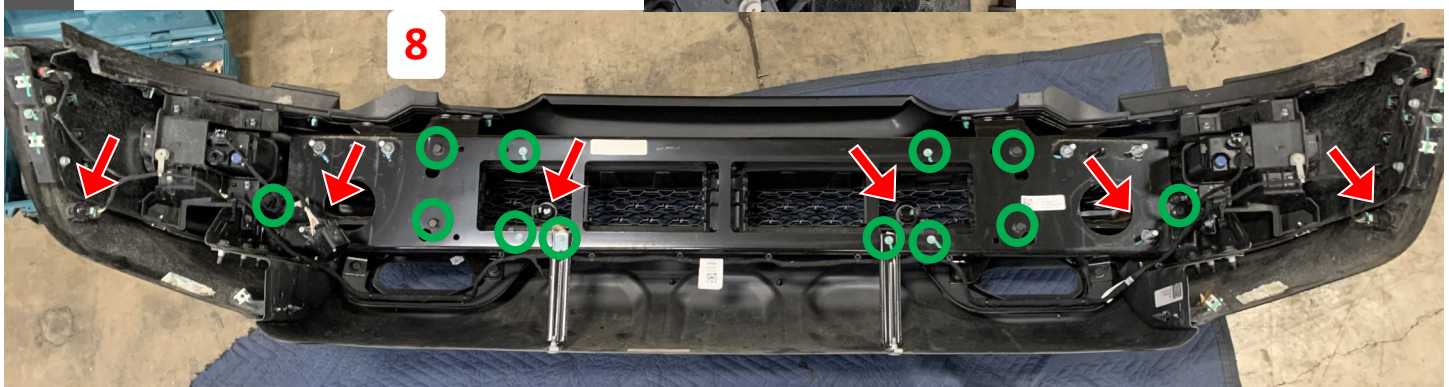
<b>ROAD ARMOR</b>		
TITLE: 2021 RAM TRX Print Stealth bolt kit		
SIZE <b>B</b>	DWG. NO. 4211FO BOLT KIT	REV -00
SCALE: 1:5	WEIGHT:	SHEET 1 OF 1



- 1 Remove bolts from Factory Skid Plate
- 2 Remove 5 - bolts from inner fender liner / bumper in each fender well.
- 3 Unplug wiring harness from driver side frame rail.
- 4 Remove three nuts from each frame horn.
- 5 Remove factory bumper from frame horn.
- 6 Remove two bolts from each tow hook.
- 7 Remove Marker Light cover to access Screws
- 8 Remove all factory sensors and harness from bumper. \*Track location for install\*

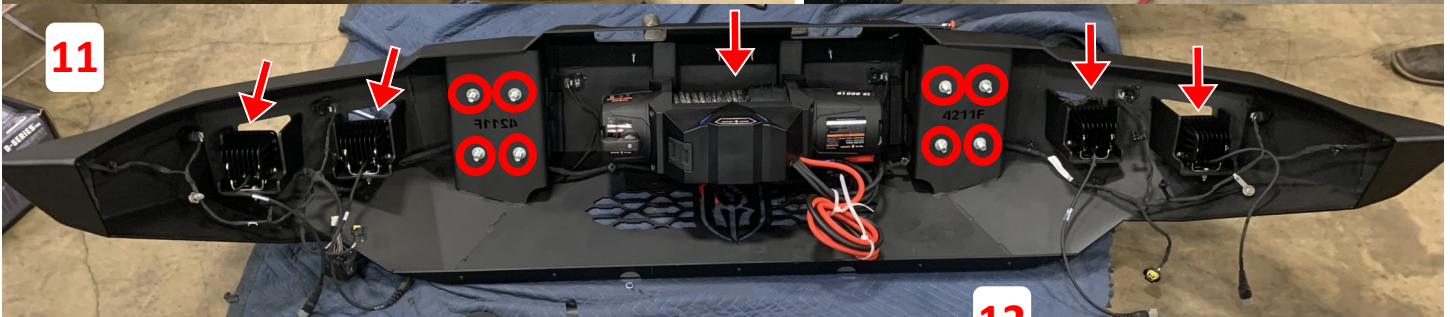


- 8 Remove Metal Cover to access all Sensors (Green Circles)



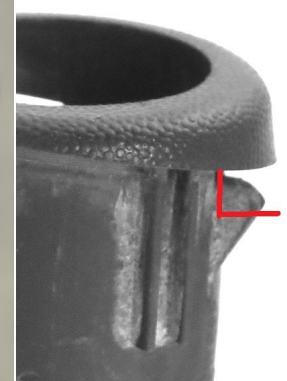


- 9 Install each frame horn bracket using 3 - 1/2 x 1 1/2" bolts, washers, lock washers, nuts and 1 - factory tow hook bolt on each bottom side of frame & bracket. (BLUE)
- 10 Loosely install bumper brackets onto frame horn bracket using 4 - 1/2 x 1 1/2" bolts tabs, washers, lock washers & nuts. (RED)
- 11 Install 4 - 1/2 x 1 1/2" bolts tabs, retainer washers into each bumper "weld-in" bracket.
- 12 Install all factory sensors & any accessories (Winch & Lighting) prior to installing bumper onto truck. (Trim sensor housing for proper fit onto bumper.)
- 13 Install bumper onto frame brackets using supplied 1/2" washers, lock washers & nuts.



**\*Note\*** Install the Fairlead bolts before you mount the winch

Trim 1/16" off sensor housing for proper fit onto bumper. Zip tie can be used on backside to secure each sensor assembly to bumper for additional security.





14

Mate up bumper and fully tighten hardware once you have received the desired reveal.

15

Check torque after 500mi.



# FINISHED