



# INSTALL INSTRUCTIONS

## Brush Guard

Product : 4192-BRSH

Application : 2019-2024, 2025-2026 Dodge Ram  
2500/3500/4500/5500

## I WARNING

Read the instructions completely before beginning installation. Before tightening bolts, drilling or cutting where required, check to make sure there are no obstructions such as brake, fuel or electrical lines which may be damaged. Also keep in mind this is an after-market product and **MAY** require minor shimming and/or trimming, reaming, etc. for proper fit. Road Armor is not responsible for any damages to vehicle.

## i IMPORTANT NOTICE

- Be sure to inspect and test fit your product to ensure proper fitment before having it coated, painted, bed lined, etc.
- Road Armor will not be responsible for the cost of coating your unit if any problems with fit or finish are not noted and addressed beforehand.

## SAFETY FIRST!

- FOLLOW ALL INSTRUCTIONS, YOUR SAFETY AND THE SAFETY OF OTHERS IS MOST IMPORTANT.
- WEAR APPROPRIATE EYE PROTECTION AND EXERCISE CAUTION WHEN DRILLING / CUTTING

## REQUIRED TOOLS

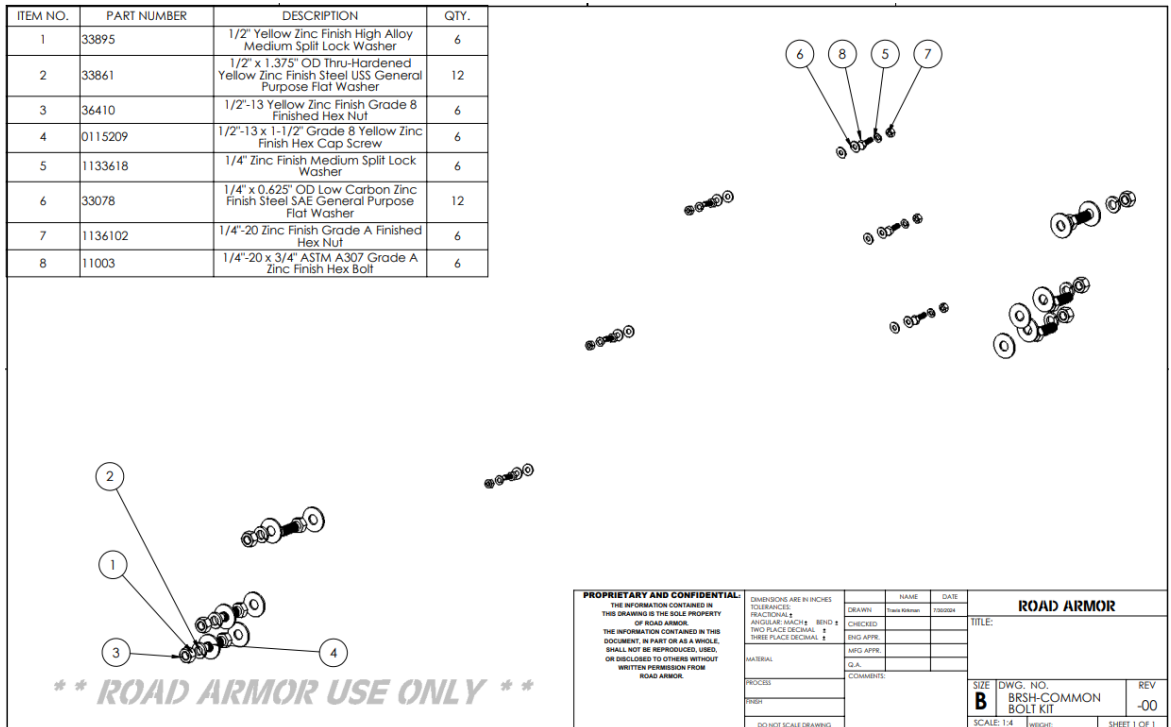
SAE & METRIC Socket set and wrenches  
Screw drivers, pry tool, pick tool, pliers

## RECOMMENDED TOOLS

Adjustable Table Cart/Table/Pallet Lift or Hoist  
Impact driver

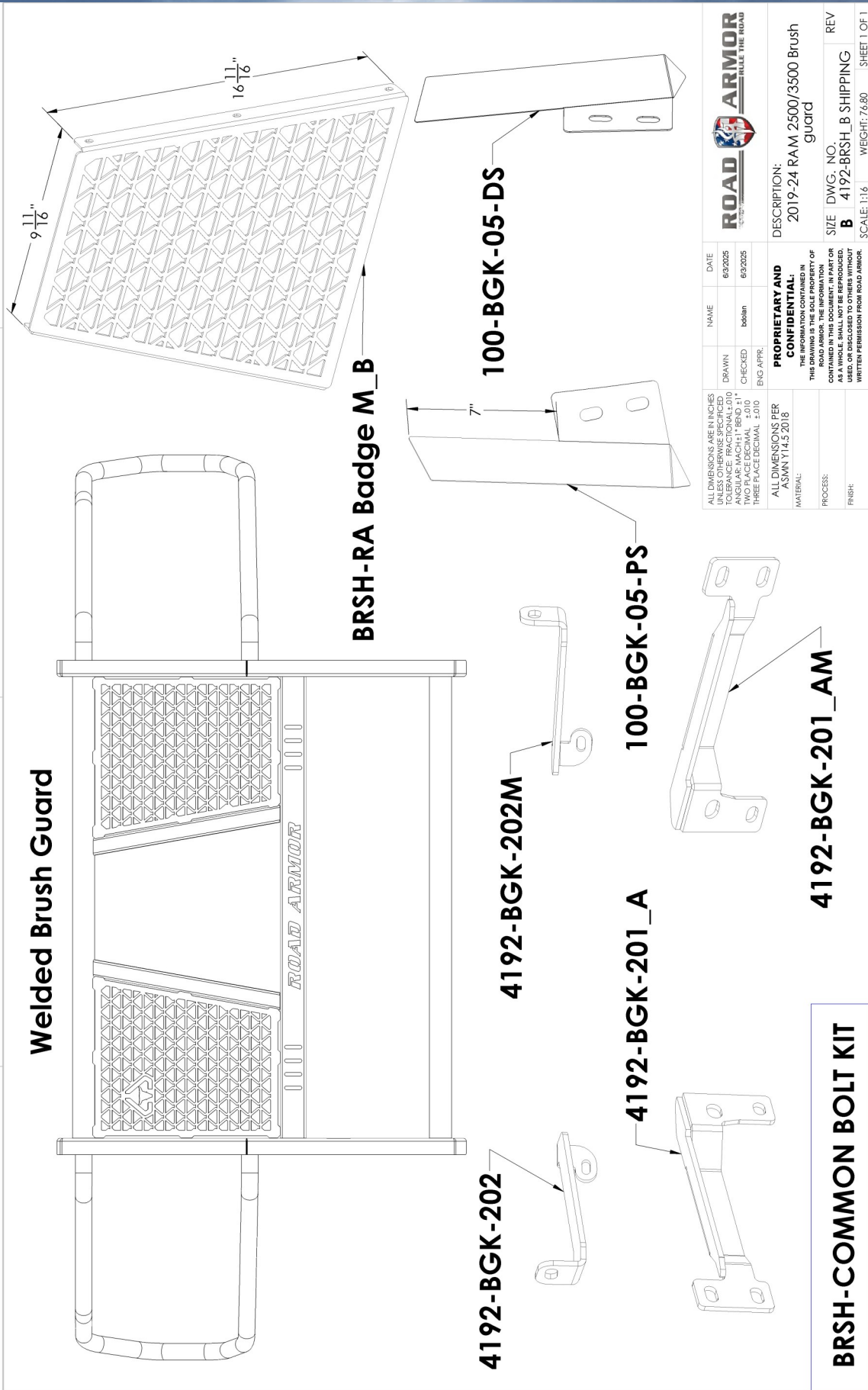
## INCLUDED HARDWARE

ITEM NO.	PART NUMBER	DESCRIPTION	QTY.
1	33895	1/2" Yellow Zinc Finish High Alloy Medium Split Lock Washer	6
2	33861	1/2" x 1.375" OD Thru-Hardened Yellow Zinc Finish Steel USS General Purpose Flat Washer	12
3	36410	1/2"-13 Yellow Zinc Finish Grade 8 Finished Hex Nut	6
4	0115209	1/2"-13 x 1-1/2" Grade 8 Yellow Zinc Finish Hex Cap Screw	6
5	1133618	1/4" Zinc Finish Medium Split Lock Washer	6
6	33078	1/4" x 0.425" OD Low Carbon Zinc Finish Steel SAE General Purpose Flat Washer	12
7	1136102	1/4"-20 Zinc Finish Grade A Finished Hex Nut	6
8	11003	1/4"-20 x 3/4" ASTM A307 Grade A Zinc Finish Hex Bolt	6



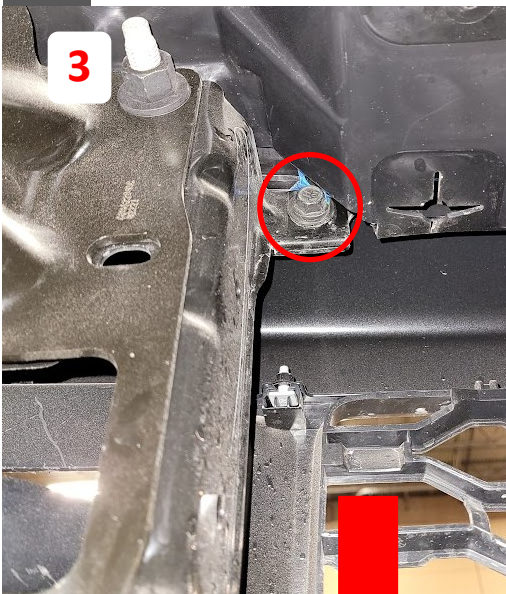
**\*\* ROAD ARMOR USE ONLY \*\***

<b>PROPRIETARY AND CONFIDENTIAL</b> THE INFORMATION CONTAINED IN THIS DRAWING IS THE SOLE PROPERTY OF ROAD ARMOR. THE INFORMATION CONTAINED IN THIS DOCUMENT IS PART OR AS A WHOLE, SHALL NOT BE REPRODUCED, USED, OR DISCLOSED TO OTHERS WITHOUT WRITTEN PERMISSION FROM ROAD ARMOR.		DIMENSIONS ARE IN INCHES TOLERANCES: FRACTIONAL ± DECIMALS ± TWO PLACE DECIMAL ± THREE PLACE DECIMAL ± G.A. COMMENTS:	<table border="1"> <tr> <th>NAME</th> <th>DATE</th> </tr> <tr> <td>Drawn: [ ]</td> <td>1/10/2014</td> </tr> <tr> <td>CHECKED:</td> <td></td> </tr> <tr> <td>ENG APPR:</td> <td></td> </tr> <tr> <td>MFG APPR:</td> <td></td> </tr> </table>	NAME	DATE	Drawn: [ ]	1/10/2014	CHECKED:		ENG APPR:		MFG APPR:		<b>ROAD ARMOR</b> TITLE: SIZE <b>B</b> DWG. NO. BRSH-COMMON BOLT KIT REV -00 SCALE: 1:4 WEIGHT: SHEET 1 OF 1
NAME	DATE													
Drawn: [ ]	1/10/2014													
CHECKED:														
ENG APPR:														
MFG APPR:														



NAME	DATE	DESCRIPTION
boban	6/3/2025	2019-24 RAM 2500/3500 Brush guard
boban	6/3/2025	
DRAWN	CHECKED	ENG APPR.
<b>PROPRIETARY AND CONFIDENTIAL:</b>		
THE INFORMATION CONTAINED IN THIS DRAWING IS THE SOLE PROPERTY OF ROAD ARMOR. THE INFORMATION CONTAINED HEREIN IS TO BE USED AS A GUIDE ONLY. IT IS NOT TO BE REPRODUCED OR DISCLOSED TO OTHERS WITHOUT WRITTEN PERMISSION FROM ROAD ARMOR.		
ALL DIMENSIONS PER ASMN Y14.5 2018		
MATERIAL:		
PROCESS:		
FINISH:		
SIZE	DWG. NO.	REV
B	4192-BRSH_B SHIPPING	
SCALE: 1:1.6	WEIGHT: 76.80	SHEET 1 OF 1

- 1 Remove the 2 factory bolts shown for each side. Will reuse.
- 2 Install brush guard lower brackets through the outside of the tow hook hole. Do Not Fully Tighten.
- 3 Mount the upper brackets through the grille and bumper as shown.
- 4 Mount the brush guard and adjust fitment. Tighten all nuts and bolts when desired fitment is achieved.



**5** If vehicle is equipped with sensors, install deflector plates to each side as shown below.



**Finished**

