



# **INSTALL INSTRUCTIONS**

## **Spartan Rear Bumper**

**Product : 4102XR**

**Application : 2010 — 2018 Ram 2500, 3500**

## I WARNING

Read the instructions completely before beginning installation. Before tightening bolts, drilling or cutting where required, check to make sure there are no obstructions such as brake, fuel or electrical lines which may be damaged. Also keep in mind this is an after-market product and MAY require minor shimming and/or trimming, reaming, etc. for proper fit. Road Armor is not responsible for any damages to vehicle.

## ❗ IMPORTANT NOTICE

- Be sure to inspect and test fit your product to ensure proper fitment before having it coated, painted, bed lined, etc.
- Road Armor will not be responsible for the cost of coating your unit if any problems with fit or finish are not noted and addressed beforehand.

### SAFETY FIRST!

- FOLLOW ALL INSTRUCTIONS, YOUR SAFETY AND THE SAFETY OF OTHERS IS MOST IMPORTANT.
- WEAR APPROPRIATE EYE PROTECTION AND EXERCISE CAUTION WHEN DRILLING / CUTTING

### REQUIRED TOOLS

Metric & Standard Socket Set

Pick/Screw Driver (for sensor removal)

### INCLUDED HARDWARE

6	1/2"-13 x 1-1/2" Grade 8 Yellow Zinc Finish	2	License Plate Light
16	1/2" x 1.062" OD Thru-Hardened Yellow Zinc	4	#8-32 x 3/4" ASTM F879 Hex Drive Grade 18-8 Stainless Steel Flat Socket Cap
10	1/2" Yellow Zinc Finish High Alloy Medium	4	#8-32 Zinc Finish Steel with External Tooth
10	1/2"-13 Yellow Zinc Finish Grade 8 Finished	4	1 1/8" Dome Plug
8	1/4"-20 x 3/4" ASTM F879 Hex Drive Grade 18	4	#10-24 x 3/4" ASTM F879 Hex Drive Grade 18-
8	1/4"-20 Zinc Finish Steel with External Tooth	4	#10-24 Zinc Finish Steel with External Tooth
		4	1.5" Single Bolt Tab (ZINC)
		4	M6 x 16mm Phillips Hex Washer Head Tap
		4	1/4" (14) Screw Size License Plate Nut White

- 1** Disconnect wire harness from license plate lights. Repeat this step for the other side of the bumper.
- 2** Disconnect wire harness from trailer wire plug. Once the wire harness is disconnected, push in the clips on both sides of the plug and remove plug from bumper.

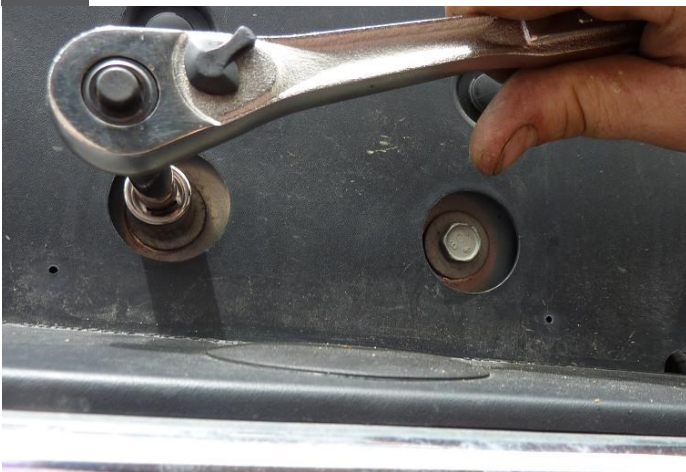


- 3** Using a 15mm socket remove the two bolts that hold the bumper mounts to frame. Repeat step for other side of bumper.



**NOTE: Bumper will be removed during this step. Be prepared to hold bumper in place and remove once bolt plates are removed.**

- 4** Using a 15mm socket remove the two bolts which are located where the license plate mounts to bumper. Once they are removed the bumper can be removed from truck.





- 5 Install factory sensors (if equipped), trailer pin, aftermarket light, and license plate lights.
- 6 Install the bolt on bracket onto the bumper assembly using the (3) 1/2" bolt tabs per side. Tighten enough to allow for adjustability.
- 7 Insert (2) 1/2" bolt tabs per side into the frame brackets and secure in place with the 1/2" retaining nuts.
- 8 Place bumper onto truck and attach the 1/2" hardware (flat washer, split lock washer, and nut) to the frame brackets.
- 9 Adjust left/right first and tighten frame brackets. Then adjust up/down and in/out and tighten the 3 1/2" bolts per side.
- 10 Wire in aftermarket license plate lights into factory harness and reattach wiring harness to truck. Make sure to secure any loose wiring.

