

# INSTALL INSTRUCTIONS

## Evolution Rear Bumper

Product : 4102ER0X

Application : 2010 — 2018 Ram 2500, 3500

### I WARNING

Read the instructions completely before beginning installation. Before tightening bolts, drilling or cutting where required, check to make sure there are no obstructions such as brake, fuel or electrical lines which may be damaged. Also keep in mind this is an after-market product and MAY require minor shimming and/or trimming, reaming, etc. for proper fit. Road Armor is not responsible for any damages to vehicle.

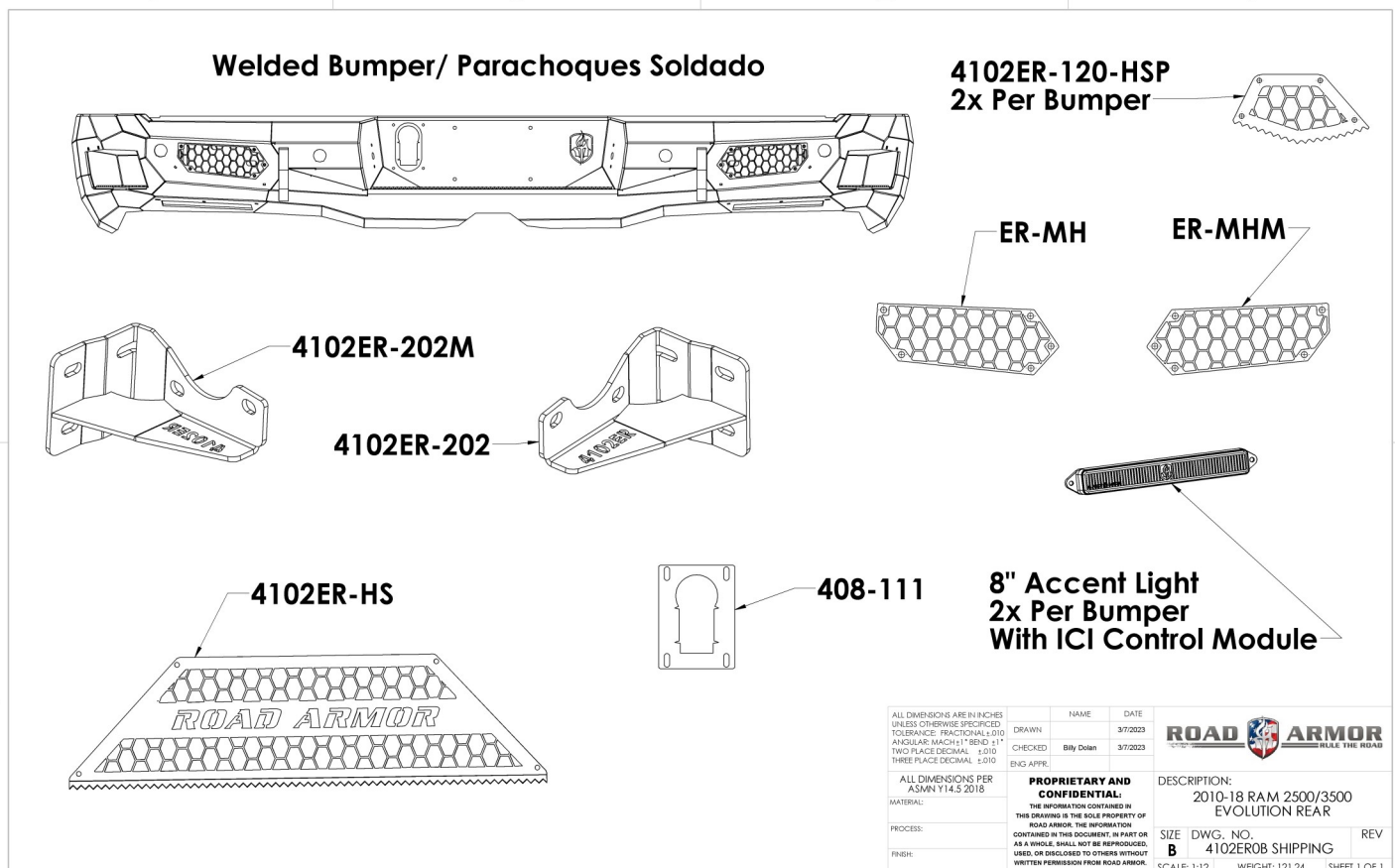
### ⓘ IMPORTANT NOTICE

- Be sure to inspect and test fit your product to ensure proper fitment before having it coated, painted, bed lined, etc.
- Road Armor will not be responsible for the cost of coating your unit if any problems with fit or finish are not

#### SAFETY FIRST!

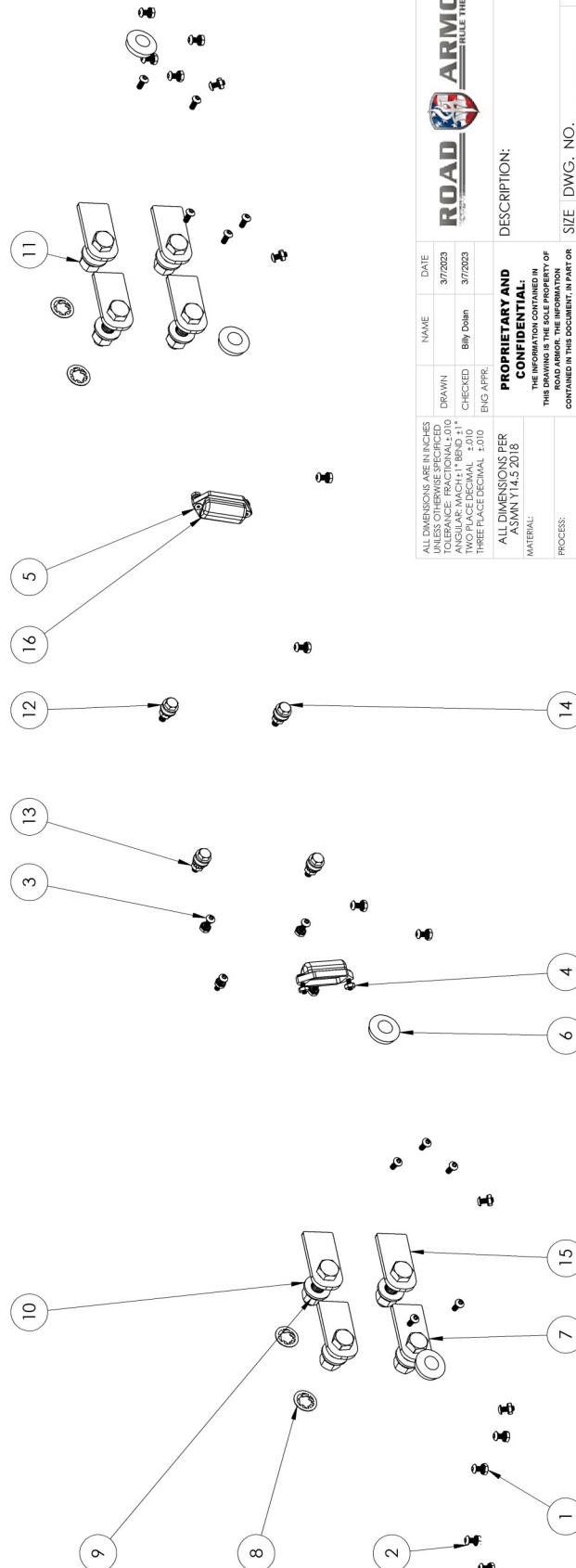
- FOLLOW ALL INSTRUCTIONS, YOUR SAFETY AND THE SAFETY OF OTHERS IS MOST IMPORTANT.
- WEAR APPROPRIATE EYE PROTECTION AND EXERCISE CAUTION WHEN DRILLING / CUTTING

#### INCLUDED PARTS



# INCLUDED HARDWARE

ITEM NO.	PART NUMBER	DESCRIPTION	QTY.
1	37407	# 10-24 Zinc Finish Steel with External Tooth Lockwasher K-Lock Nut	20
2	94030	# 10-24 x 1/2" ASTM F835 Hex Drive Zinc Finish Alloy Steel Button Socket Cap Screw	26
3	73734	# 10-24 x 3/4" ASTM F879 Hex Drive Grade 18-8 Stainless Steel Button Socket Cap Screw	4
4	37406	# 8-32 Zinc Finish Steel with External Tooth Lockwasher K-Lock Nut	4
5	73854	# 8-32 x 3/4" ASTM F879 Hex Drive Grade 18-8 Stainless Steel Flat Socket Cap Screw	4
6	1.125 inch plug	1 1/8" Dome plug	4
7	11218-05078	1.5" Single Bolt Tab (ZINC)	4
8	0162849	1/2" Bolt 15/16" O.D. Zinc Pushnut Bolt Retainer	4
9	33895	1/2" Yellow Zinc Finish High Alloy Medium Split Lock Washer	8
10	33817	1/2" x 1.062" OD Thru-Hardened Yellow Zinc Finish Steel SAE General Purpose Flat Washer	8
11	36410	1/2"-13 Yellow Zinc Finish Grade 8 Finished Hex Nut	8
12	33078	1/4" x 0.625" OD Low Carbon Zinc Finish Steel SAE General Purpose Flat Washer	8
13	1137410	1/4"-20 Zinc Finish Steel with External Tooth Lockwasher K-Lock Nut	4
14	11003	1/4"-20 x 3/4" ASTM A307 Grade A Zinc Finish Hex Bolt	4
15	11218-05079	2" SINGLE BOLT TAB (ZINC)	4
16	License plate light	RA	2



ALL DIMENSIONS ARE IN INCHES UNLESS OTHERWISE SPECIFIED TOLERANCE: FRACTIONAL ± 0.01 ANGULAR: MACH ± 1° BEND ± 1° DECIMAL: ± 0.005 THREE PLACE DECIMAL ± 0.010	DRAWN	CHECKED	ENG APPR.	NAME	DATE
				Bill Dolan	3/7/2023
<b>PROPRIETARY AND CONFIDENTIAL:</b> THE INFORMATION CONTAINED IN THIS DOCUMENT IS THE PROPERTY OF ROAD ARMOR. THE INFORMATION CONTAINED IN THIS DOCUMENT IS NOT TO BE REPRODUCED, COPIED, OR DISCLOSED TO OTHERS WITHOUT WRITTEN PERMISSION FROM ROAD ARMOR.					
DESCRIPTION: THE INFORMATION CONTAINED IN THIS DOCUMENT IS THE PROPERTY OF ROAD ARMOR. THE INFORMATION CONTAINED IN THIS DOCUMENT IS NOT TO BE REPRODUCED, COPIED, OR DISCLOSED TO OTHERS WITHOUT WRITTEN PERMISSION FROM ROAD ARMOR.					
ALL DIMENSIONS PER ASME Y14.5 2018					
MATERIAL:					
PROCESS:					
FINISH:					
SIZE DWG. NO. REV B 4102ER-BOLTKIT SCALE: 1:12 WEIGHT: 0.51 SHEET 1 OF 1					



- 1** Disconnect wire harness from license plate lights. Repeat this step for the other side of the bumper.
- 2** Disconnect wire harness from trailer wire plug. Once the wire harness is disconnected, push in the clips on both sides of the plug and remove plug from bumper.

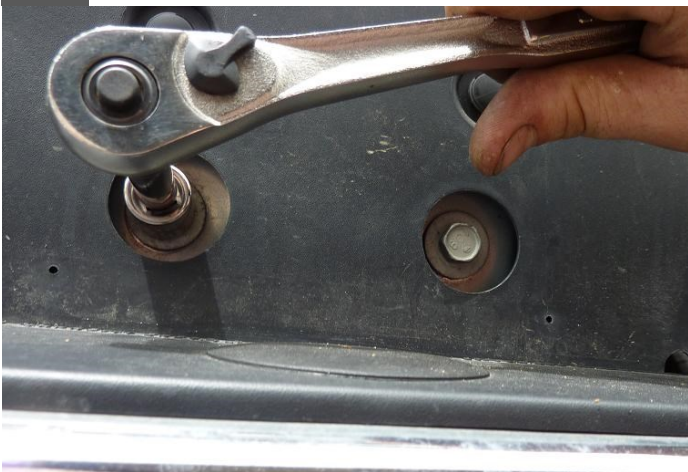


- 3** Using a 15mm socket remove the two bolts that hold the bumper mounts to frame. Repeat step for other side of bumper.



**NOTE: Bumper will be removed during step 4. Be prepared to hold bumper in place and remove once bolts are removed.**

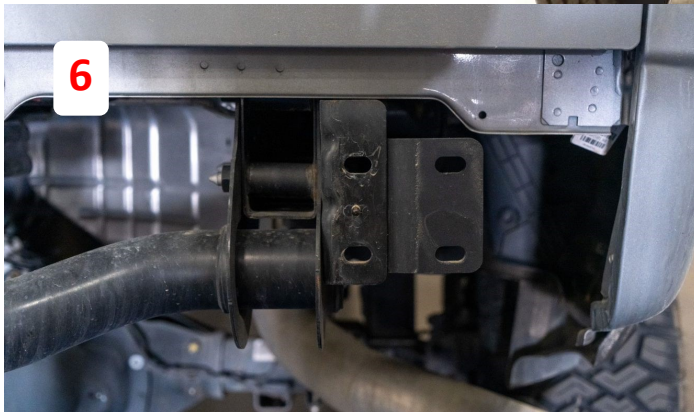
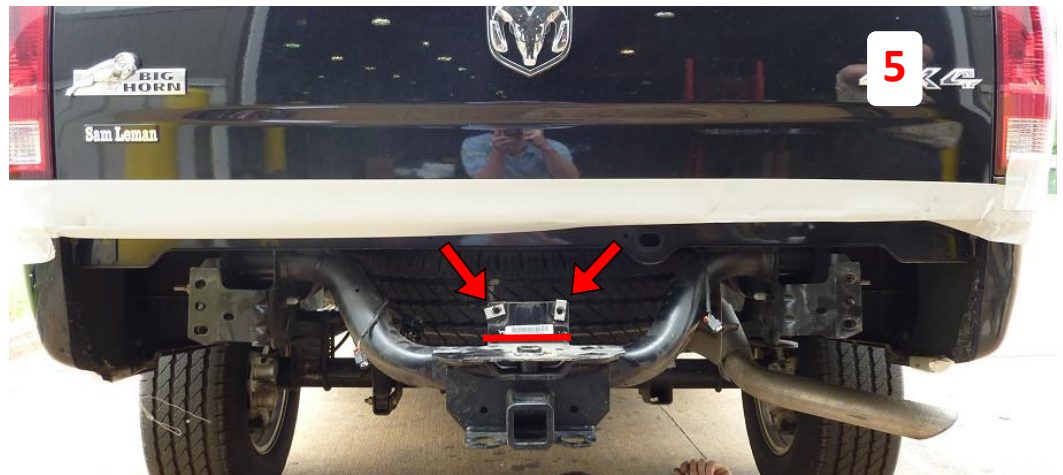
- 4** Using a 15mm socket remove the two bolts which are located where the license plate mounts to bumper. Once they are removed the bumper can be removed from truck.





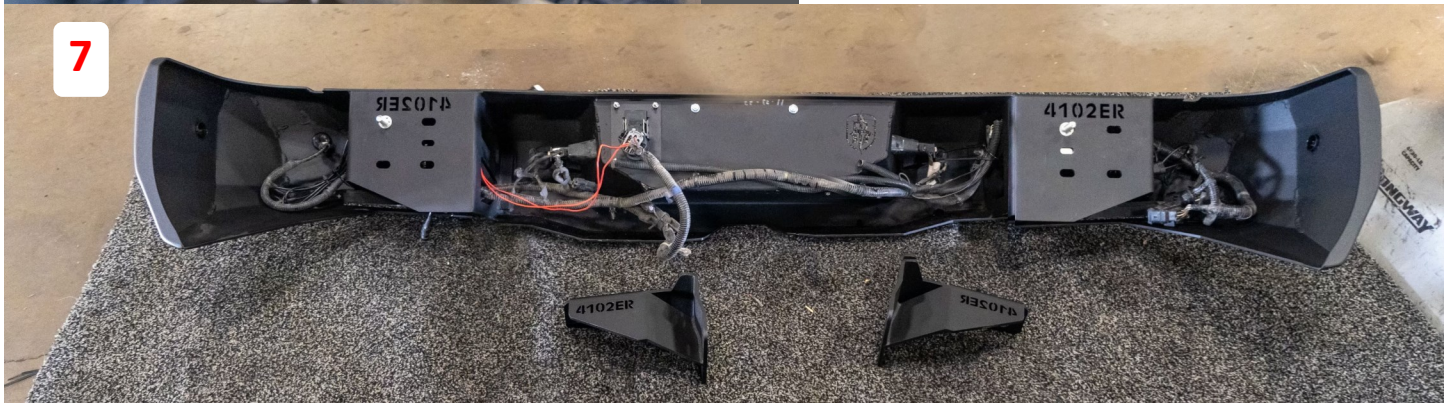
- 5** Cut off studs or back plate of hitch, whichever is easier

- 6** Install Frame Mounting Brackets using OEM Hardware.



- 7** Install Parking Sensors, Trailer Plug, Provided License Plate Lights, Accent Lights, Cubes, Step Plate, and License Plate.

- 8** Wet the inside of the Grommet before inserting the Sensor, this will make it easier to push the sensor in.



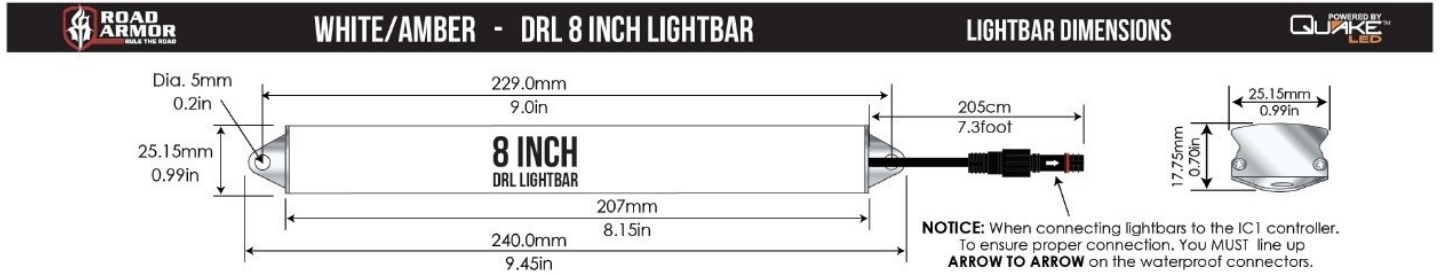
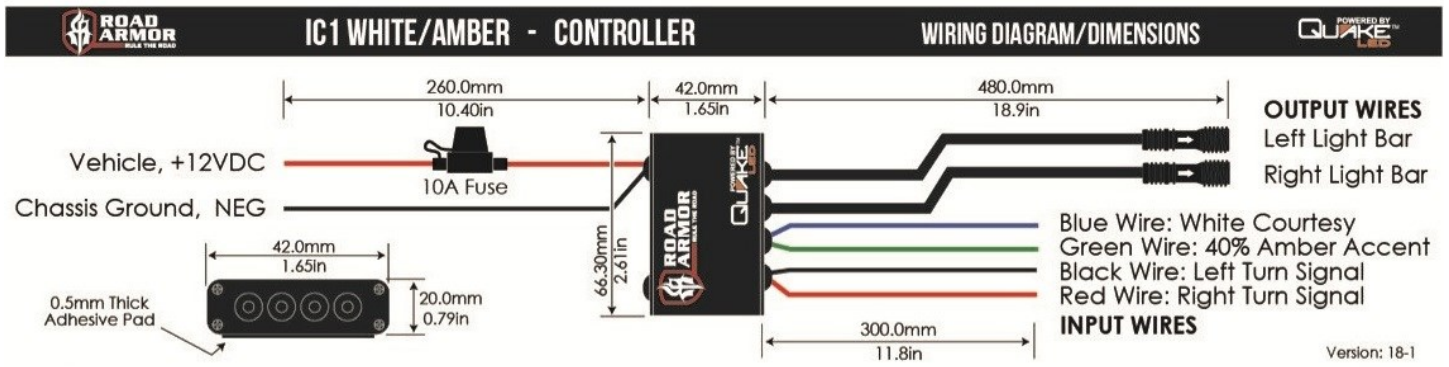
- 9** Install bolt tabs through bumper using the included keeper washers. Use a 3/4" deep socket to push the washers over the threads. Remaining bolt tabs can be installed while on vehicle.

- 10** Mount bumper to vehicle. Install using provided washer, lock washer, and nut. Leave finger tight to allow for adjustment.

- 11** Align bumper to liking, then tighten all hardware.







**Finished**

