



# INSTALL INSTRUCTIONS

## Evolution Front Bumper

Product : 4102EFXX

Application : 2010-18 Dodge Ram 2500, 3500

### I WARNING

Read the instructions completely before beginning installation. Before tightening bolts, drilling or cutting where required, check to make sure there are no obstructions such as brake, fuel or electrical lines which may be damaged. Also keep in mind this is an after-market product and MAY require minor shimming and/or trimming, reaming, etc. for proper fit. Road Armor is not responsible for any damages to vehicle.

### IMPORTANT NOTICE

- Be sure to inspect and test fit your product to ensure proper fitment before having it coated, painted, bed lined, etc.
- Road Armor will not be responsible for the cost of coating your unit if any problems with fit or finish are not

## SAFETY FIRST!

- FOLLOW ALL INSTRUCTIONS, YOUR SAFETY AND THE SAFETY OF OTHERS IS MOST IMPORTANT.
- WEAR APPROPRIATE EYE PROTECTION AND EXERCISE CAUTION WHEN DRILLING / CUTTING

## REQUIRED TOOLS

SAE & METRIC Socket set and wrenches

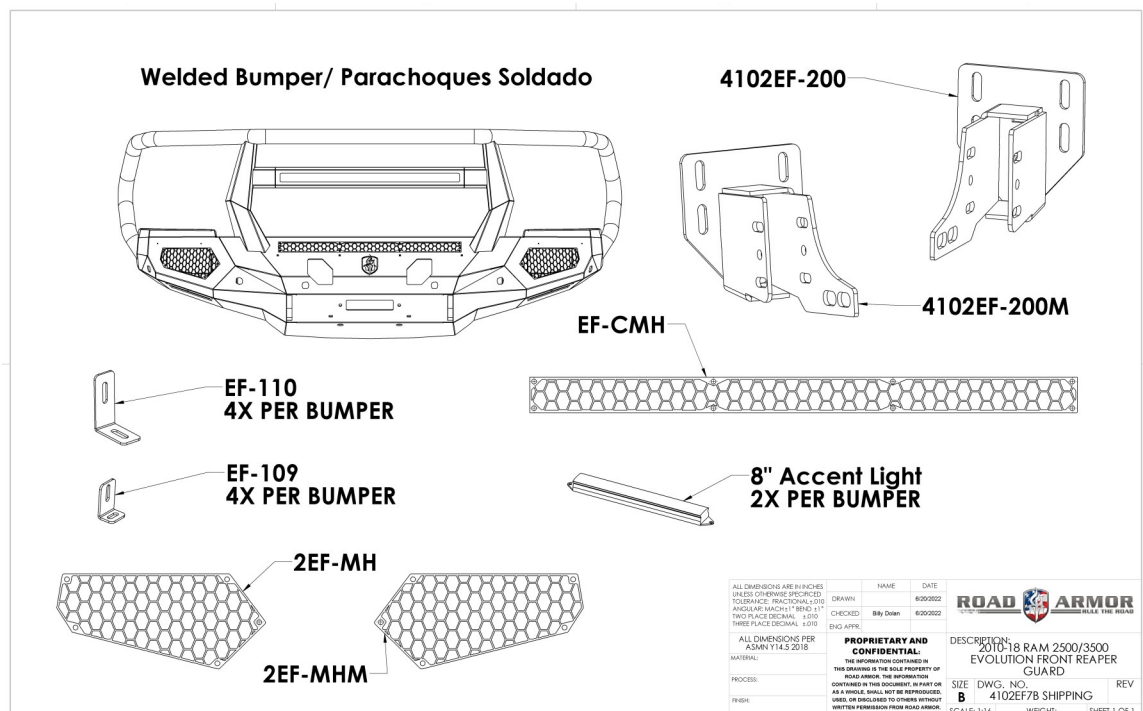
Screw drivers, pry tool, pick tool, pliers

## RECOMMENDED TOOLS

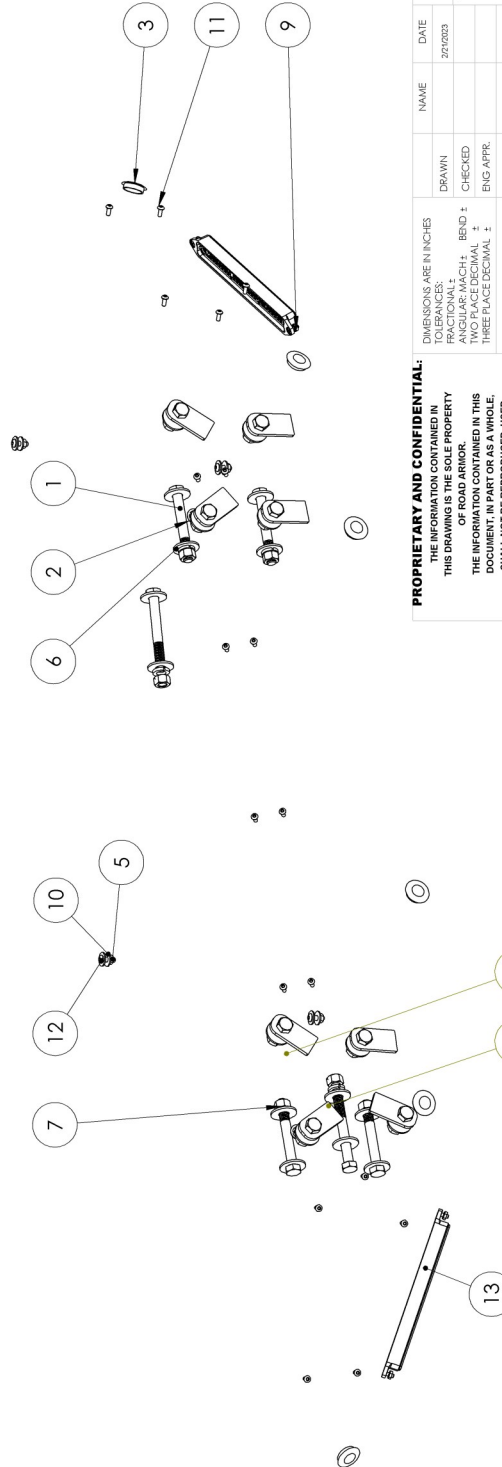
Adjustable Table Cart / Table/Pallet Lift or Hoist

Impact driver

## INCLUDED PARTS



ITEM NO.	PART NUMBER	DESCRIPTION	QTY.
1	0115219	1/2"-13 x 4" Grade 8 Yellow Zinc Finish Hex Cap Screw	6
2	0162849	1/2" Bolt 15/16" O.D. Zinc Pushnut Bolt Retainer	2
3	1.09 inch plug	1 1/16" Dome plug	6
4	11218-05078	1.5" Single Bolt Tab (ZINC)	8
5	1136102	1/4"-20 Zinc Finish Grade A Finished Hex Nut	4
6	33861	1/2" x 1.375" OD Thru-Hardened Yellow Zinc Finish Steel USS General Purpose Flat Washer	20
7	33895	1/2" Yellow Zinc Finish High Alloy Medium Split Lock Washer	14
8	36410	1/2"-13 Yellow Zinc Finish Grade 8 Finished Hex Nut	14
9	37407	# 10-24 Zinc Finish Steel with External Tooth Lockwasher K-Lock Nut	4
10	71013	Regular FW 0.25	8
11	SBHCSCREW 0.19-24x0.5-HX-N		22
12	94051	1/4" x 3/4" ASTM F835 Hex Drive Zinc Finish Alloy Steel Button Socket Cap Screw	4
13	RoadArmor-TailAccent-8in-REVD_EXTFACES	8" Road Armor Accent Light	2



**PROPRIETARY AND CONFIDENTIAL:**

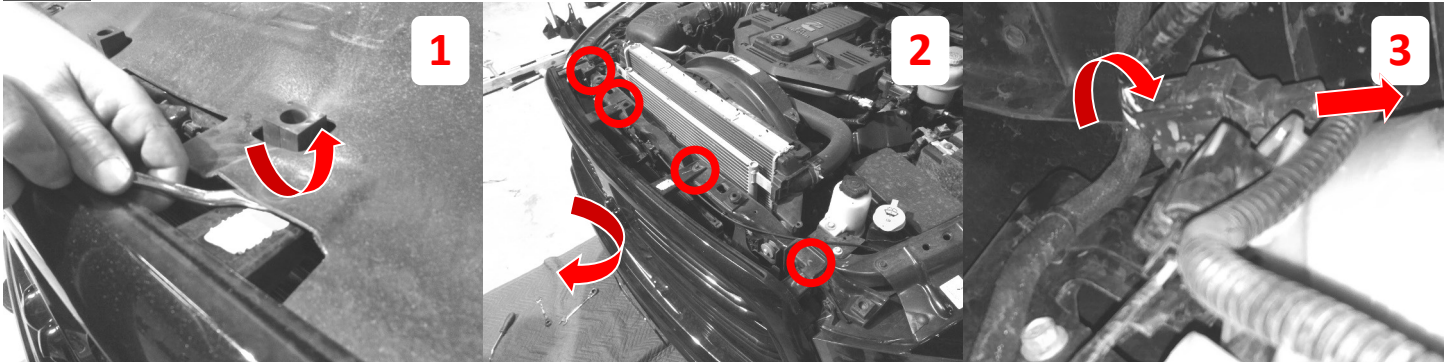
THE INFORMATION CONTAINED IN THIS DRAWING IS THE SOLE PROPERTY OF ROAD ARMOR. THE INFORMATION CONTAINED IN THIS DOCUMENT, IN PART OR AS A WHOLE, SHALL NOT BE REPRODUCED, USED, OR DISCLOSED TO ANY OTHER PERSON OR ENTITY WITHOUT WRITTEN PERMISSION FROM ROAD ARMOR.



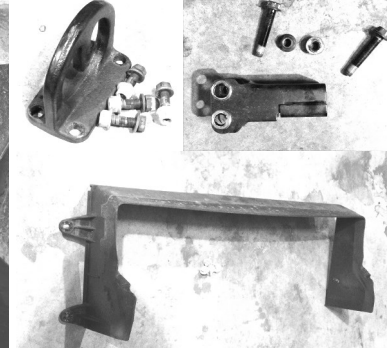
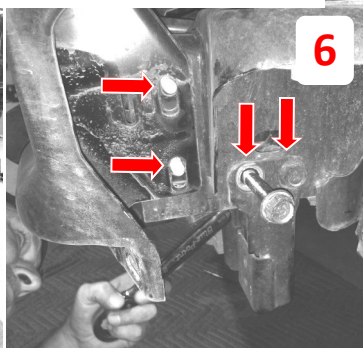
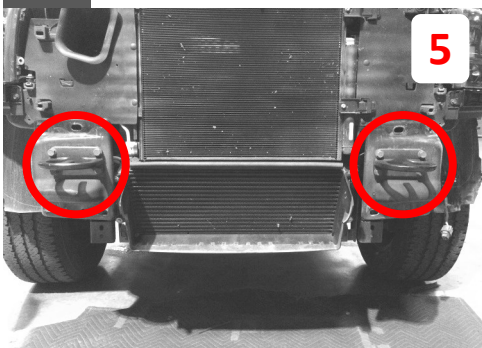
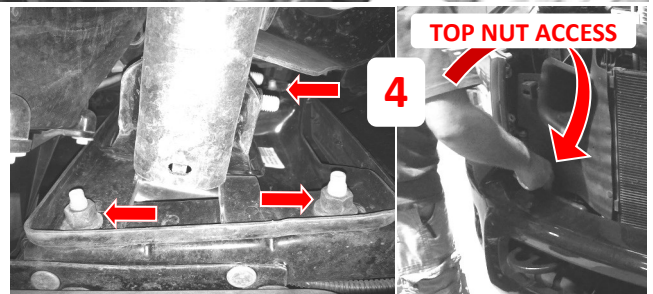
DRAWN		NAME	DATE	<b>ROAD ARMOR</b> TITLE: Bolt Kit for 4102EF and 4192EF
CHECKED			2/2/2023	
ENG APPR.				
MFG APPR.				
Q.A.		COMMENTS:		SIZE DWG. NO. REV <b>B</b> 4102EF-4192E -00 F BOLT KIT SCALE: 1:12 WEIGHT: SHEET 1 OF 1
DO NOT SCALE DRAWING				

**\*\* ROAD ARMOR USE ONLY \*\***

- 1 Remove (4) plastic ribbed retainer clips from "heavy duty" dust shield
- 2 Remove (4) grill support bolts and remove grill pulling away sides and bottom
- 3 Disconnect bumper harness plug, located near driver side fog light



- 4 Remove (4) nuts from behind bumper each side located top and bottom of tow hooks. The top inside nut is accessed from the grill opening
- 5 Remove air dam over intercooler (if equipped) and factory tow hooks (set aside)
- 6 Remove OE bumper bracket and under-run guard and set aside hardware.

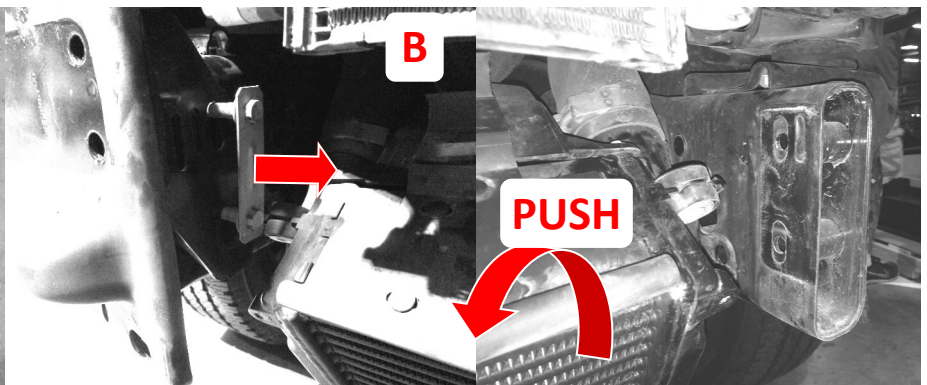
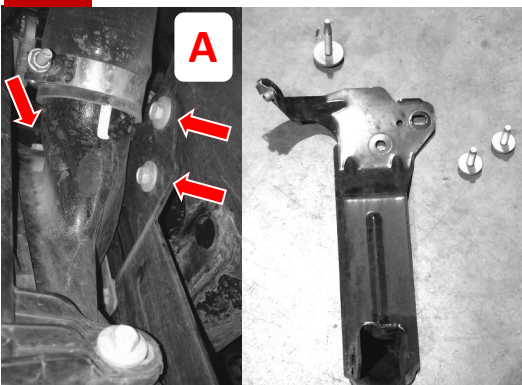


### NOTICE

THE FOLLOW  
APPLY ONLY  
TO DIESEL  
TRUCKS. SKIP  
AHEAD NOW  
IF YOU HAVE  
A GASSER.

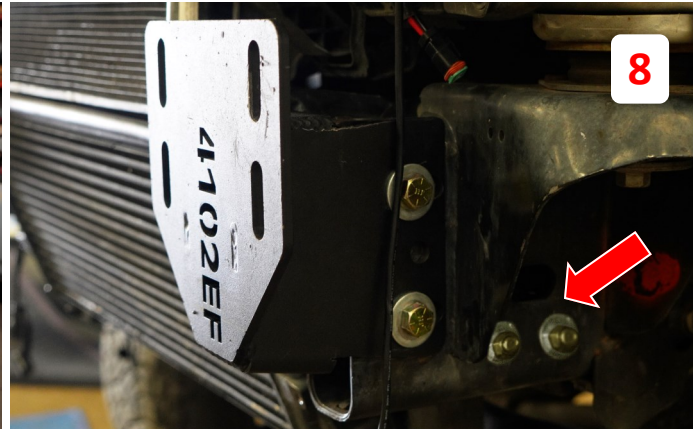
### DIESEL MODELS ONLY BELOW

- A Remove intercooler brackets both sides (3 bolts each) top bolt access from above
- B Once removed push the intercooler down and away to remove double nut plates one side at a time. The driver side is more difficult and requires patience and persistence.



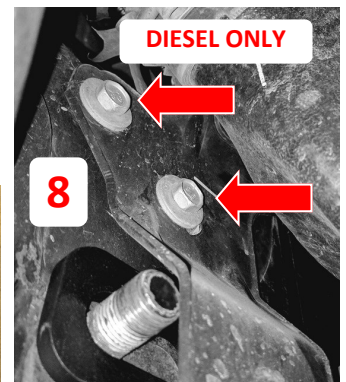
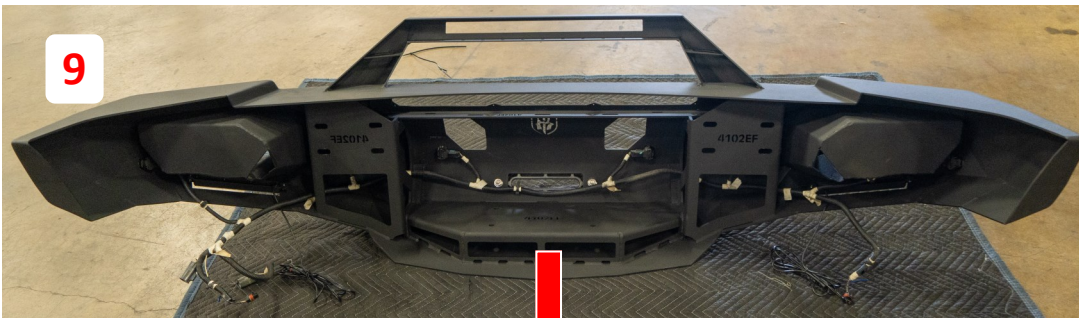
**7** Install Evolution brackets with long end on the inside of the frame using provided hardware. Do not fully tighten to allow for bumper adjustment.

**8 DIESEL MODELS ONLY**  
Re-Install Intercooler Bracket after securing Bracket long end with provided hardware with the bolt going from inside frame to the outside secured by washer, lock washer, and nut. Don't forget to tighten intercooler bracket back down once finished.



**9** Install Fairlead, sensors, and all lights. Once everything is tight, install winch.

**10** Insert a Single Bolt Tab through outside top slot as indicated, then affix to the bumper side bracket using a retainer clip. Then do the same with a Single Bolt Tab on the opposite side. Use a socket to push retainer clip onto bolt.



**11** Fit up bumper to brackets aligning the retained bolts with bracket slots then add a washer, lock washer and nut to hold bumper into place.

**12** Insert the remaining bolt tabs, keeping them loose. Adjust the bumper in and out and also the tilt. Tighten Frame mounting brackets to prevent tilt and in and out movement.

- 13** Adjust the bumper up and down and from left to right. Once desired fitment is reached, tighten all the bolts from the bumper to the brackets.

## FINISHED



IC1 WHITE/AMBER - CONTROLLER

WIRING DIAGRAM/DIMENSIONS

