

# INSTALL INSTRUCTIONS

## Identity Rear Bumper

Product : 4102DR

Application : 2010 — 2018 Ram 2500, 3500

**( THIS APPLIES TO ALL IDENTITY SERIES REAR BUMPERS )**

## I WARNING

**Read the instructions completely before beginning installation. Before tightening bolts, drilling or cutting where required, check to make sure there are no obstructions such as brake, fuel or electrical lines which may be damaged. Also keep in mind this is an after-market product and MAY require minor shimming and/or trimming, reaming, etc. for proper fit. Road Armor is not responsible for any damages to vehicle.**

## ❗ IMPORTANT NOTICE

- Be sure to inspect and test fit your product to ensure proper fitment before having it coated, painted, bed lined, etc.
- Road Armor will not be responsible for the cost of coating your unit if any problems with fit or finish are not noted and addressed beforehand.

### SAFETY FIRST!

- FOLLOW ALL INSTRUCTIONS, YOUR SAFETY AND THE SAFETY OF OTHERS IS MOST IMPORTANT.
- WEAR APPROPRIATE EYE PROTECTION AND EXERCISE CAUTION WHEN DRILLING / CUTTING

### REQUIRED TOOLS

### INCLUDED HARDWARE

4	M6 x 16mm Phillips Hex Washer Head Tap Screw (50 PK)	4	1/4"-20 Zinc Finish Grade A Finished Hex Nut
4	1/4" (14) Screw Size License Plate Nut White Nylon	8	7/16"-14 x 1-1/2" Grade 5 Zinc Finish Hex Cap Screw
2	LED License Plate Light (2 Wire)	16	7/16" x 1.250" OD Thru-Hardened Yellow Zinc Finish Steel USS General Purpose Flat Washer
4	#8-32 Zinc Finish Steel with External Tooth Lockwasher K-Lock Nut	8	7/16"-14 Zinc Finish Grade 5 Finished Hex Nut
4	#8-32 x 3/4" ASTM F879 Hex Drive Grade 18-8 Stainless Steel Flat Socket Cap Screw	8	7/16" Yellow Zinc Finish High Alloy Medium Split Lock Washer
14	#10-24 x 1/2" ASTM F835 Hex Drive Zinc Finish Alloy Steel Button Socket Cap Screw	10	1.5" Single Bolt Tab (ZINC)
20	#10-24 Zinc Finish Steel with External Tooth Lockwasher K-Lock Nut	10	1/2" x 1.375" OD Thru-Hardened Yellow Zinc Finish Steel USS General Purpose Flat Washer
16	#10-24 x 3/4" ASTM F879 Hex Drive Grade 18-8 Stainless Steel Button Socket Cap Screw	10	1/2" Yellow Zinc Finish High Alloy Medium Split Lock Washer
4	1/4"-20 x 3/4" ASTM F835 Hex Drive Zinc Finish Alloy Steel Button Socket Cap Screw	10	1/2"-13 Yellow Zinc Finish Grade 8 Finished Hex Nut
8	1/4" x 0.734" OD Low Carbon Zinc Finish Steel USS General Purpose Flat Washer	6	1/2" Bolt 15/16" O.D. Zinc Pushnut Bolt Retainer
1	RA-SHIELD-RWB REV01	2	8 INCH ACCENT LIGHTS & MODULE

- 1** Disconnect wire harness from license plate lights. Repeat this step for the other side of the bumper.
- 2** Disconnect wire harness from trailer wire plug. Once the wire harness is disconnected, push in the clips on both sides of the plug and remove plug from bumper.

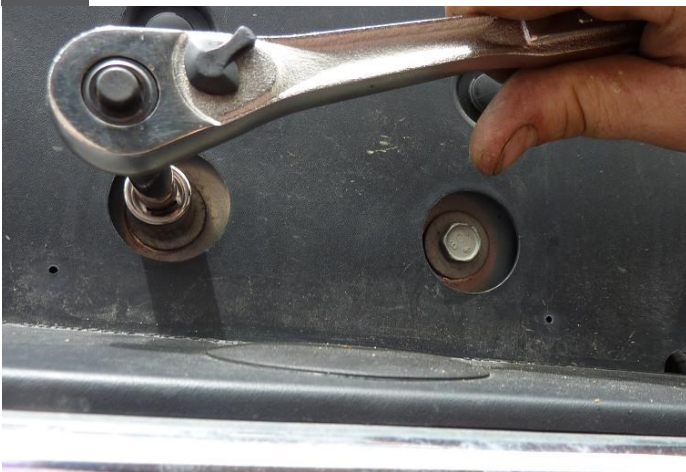


- 3** Using a 15mm socket remove the two bolts that hold the bumper mounts to frame. Repeat step for other side of bumper.



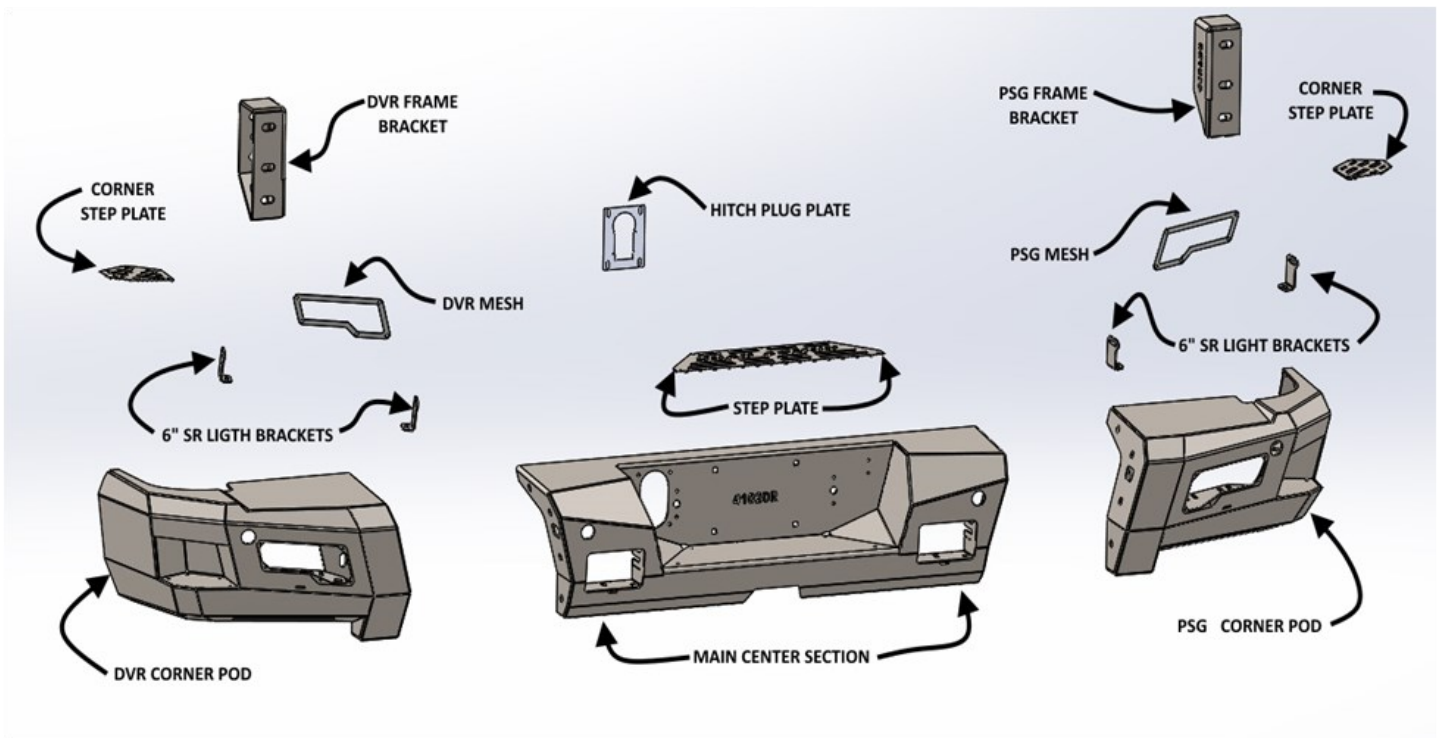
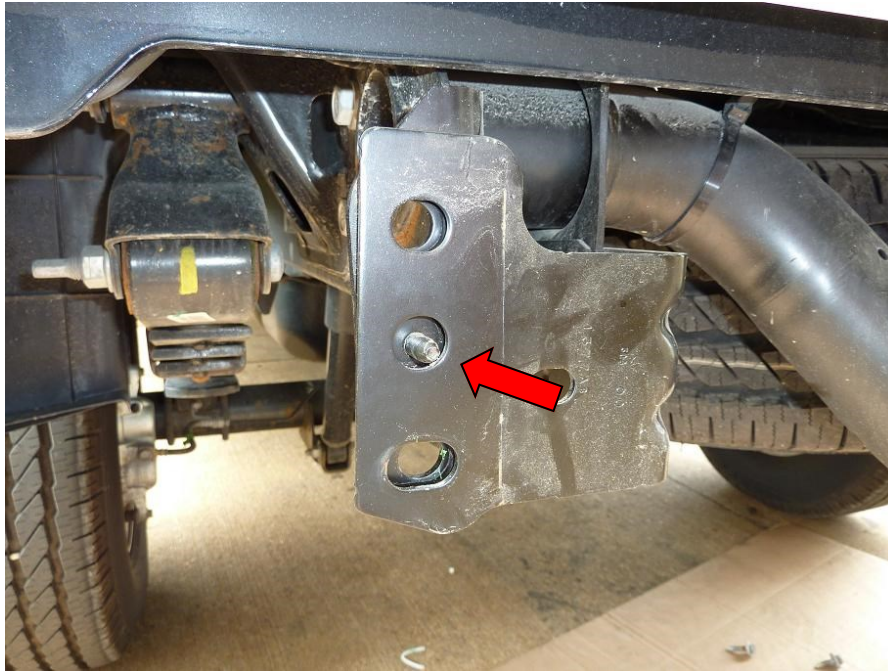
**NOTE: Bumper will be removed during this step. Be prepared to hold bumper in place and remove once bolt plates are removed.**

- 4** Using a 15mm socket remove the two bolts which are located where the license plate mounts to bumper. Once they are removed the bumper can be removed from truck.

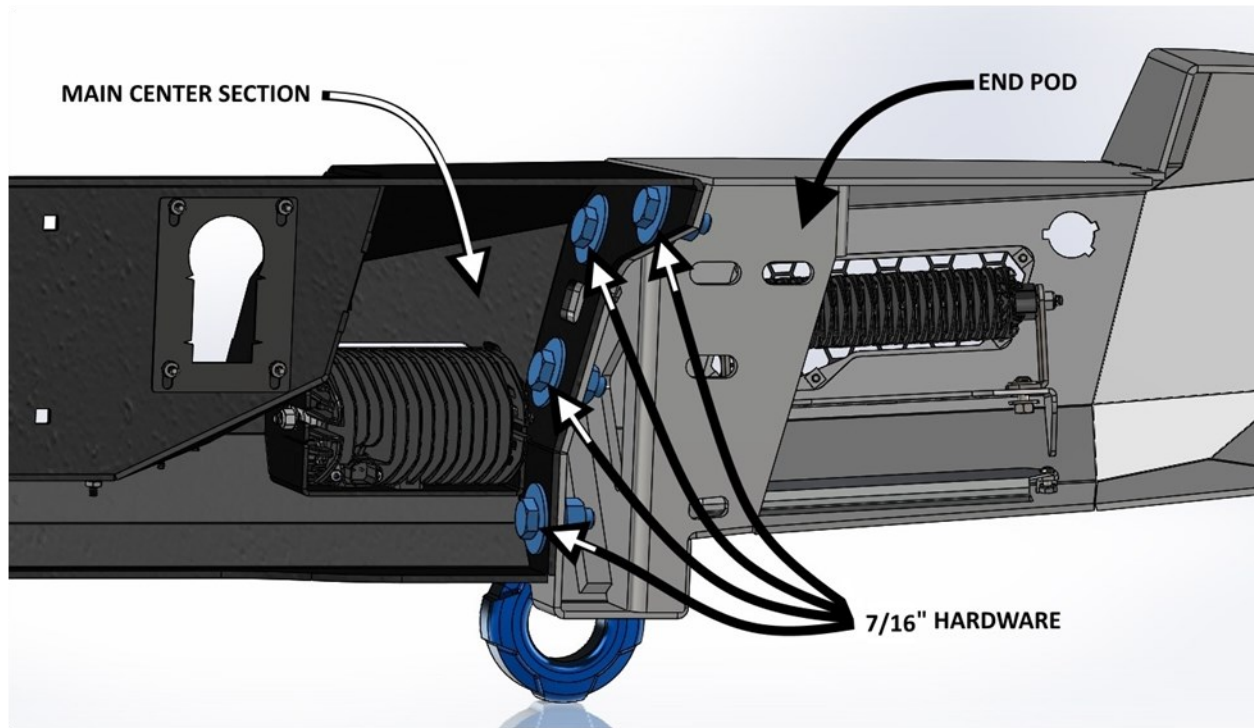




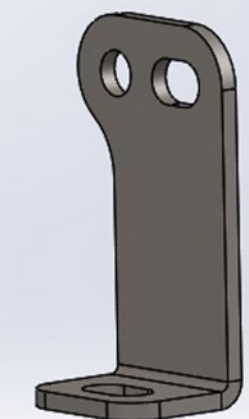
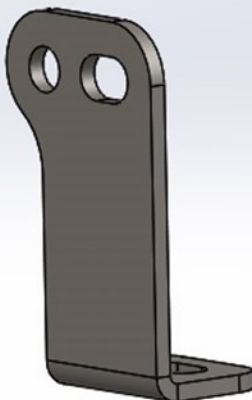
- 5** Using a hammer remove locating pin from stock mounting brackets . Repeat for other side of bumper.



- 6** Assemble each Rear End Pods to Main Center Section using 4 – 7/16"x 1 1/2" Bolts, Nuts, Lock Washers & Washers.
- 7** Install Kit 8" Accent Light into each Kit End Pod using 2 - #10-24x 1/2" Bolts & Lock Nuts.
- 8** Install Kit 6" Light Bar Brackets onto Kit End Pod Bracket using 2 – 1/4"x 3/4" Hardware supplied.

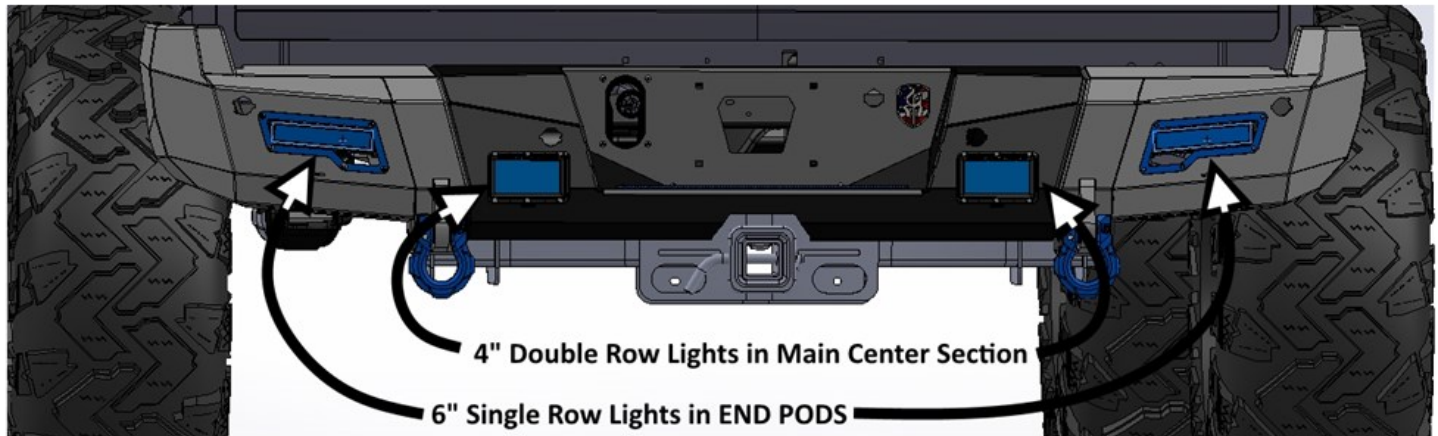


**Left Side  
Light Bracket**



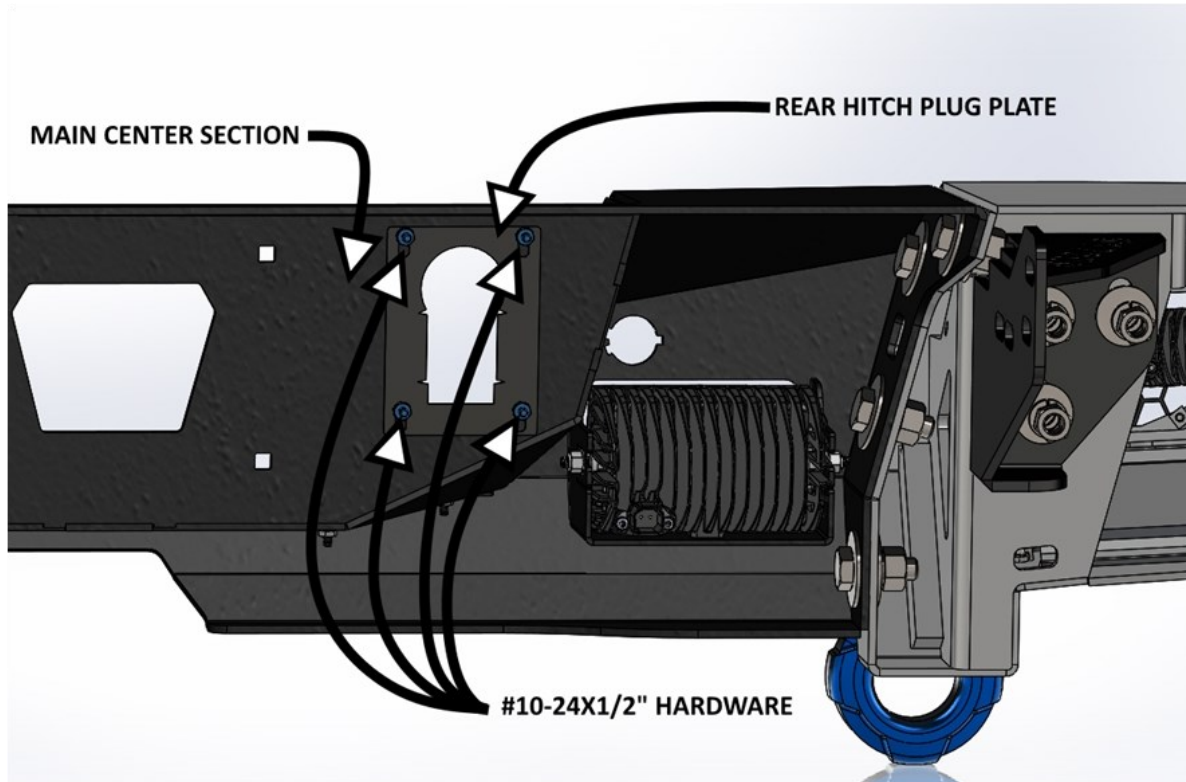
**Right Side  
Light Bracket**

**9** Install lights into Main Center Section and End Pods as Shown Below:

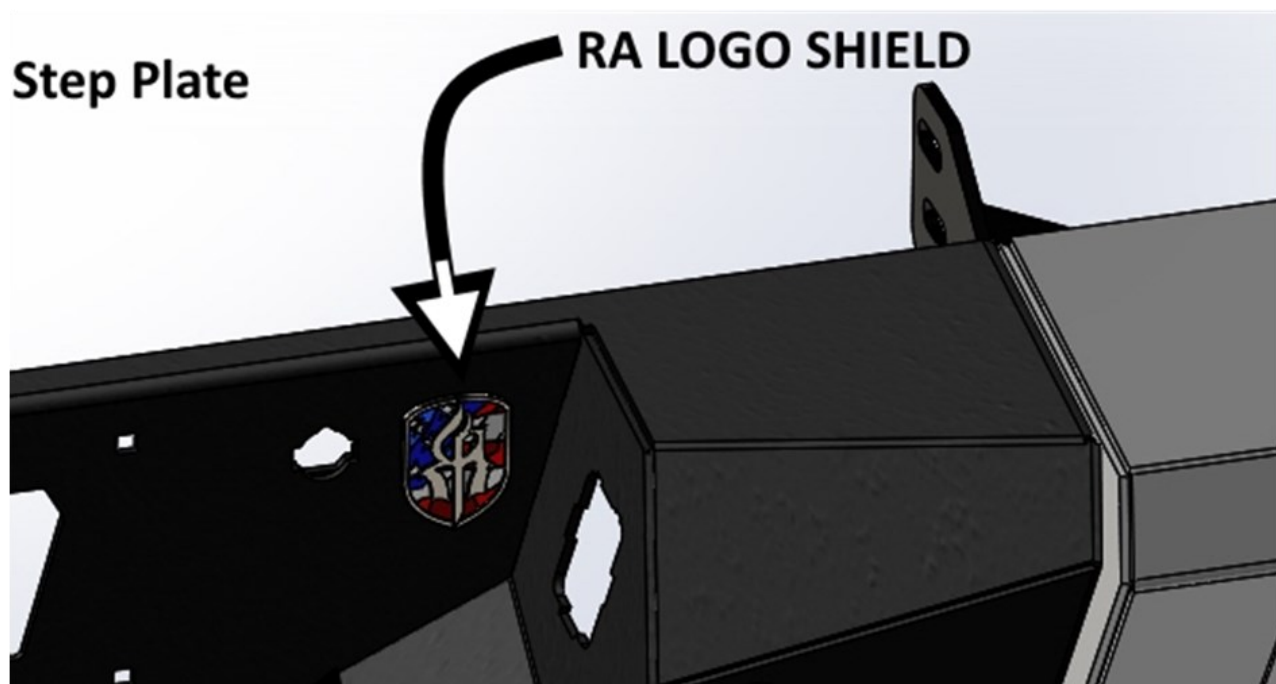




- 10** Install Hitch Plug Plate onto back of Main Center Section using 4 - #10-24x1/2" Bolts & Lock Nuts.

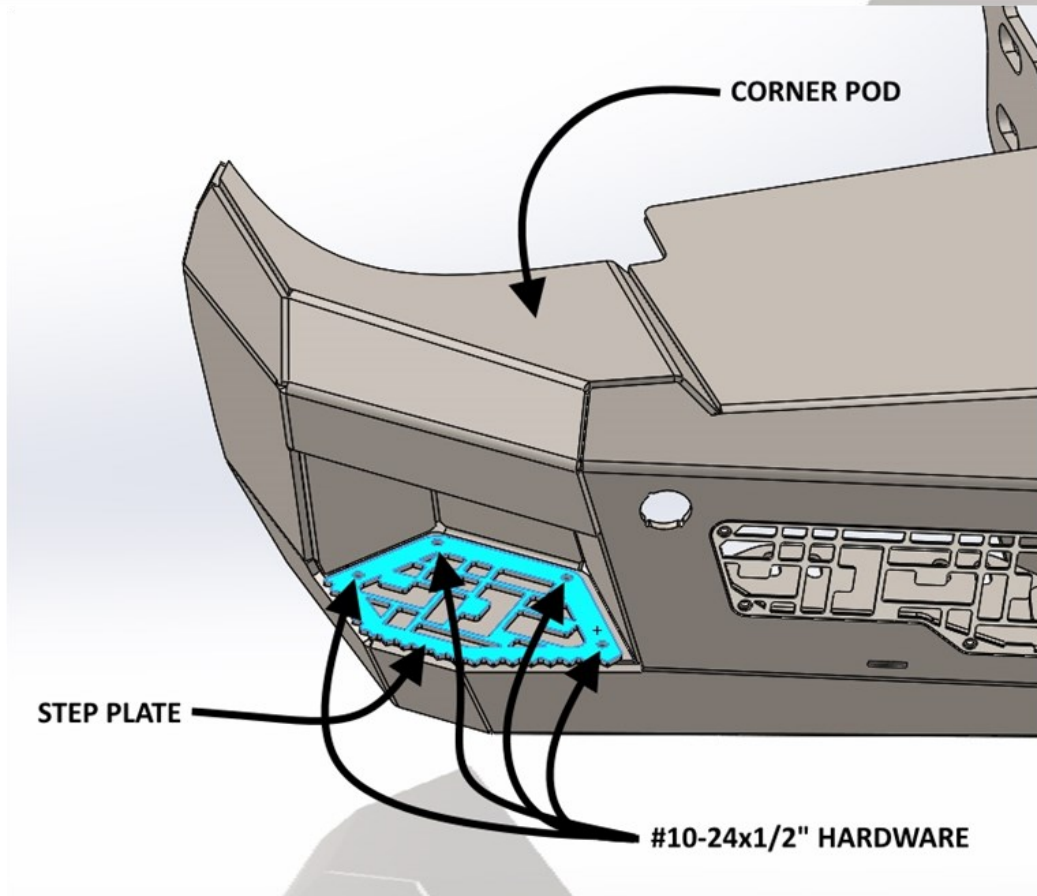
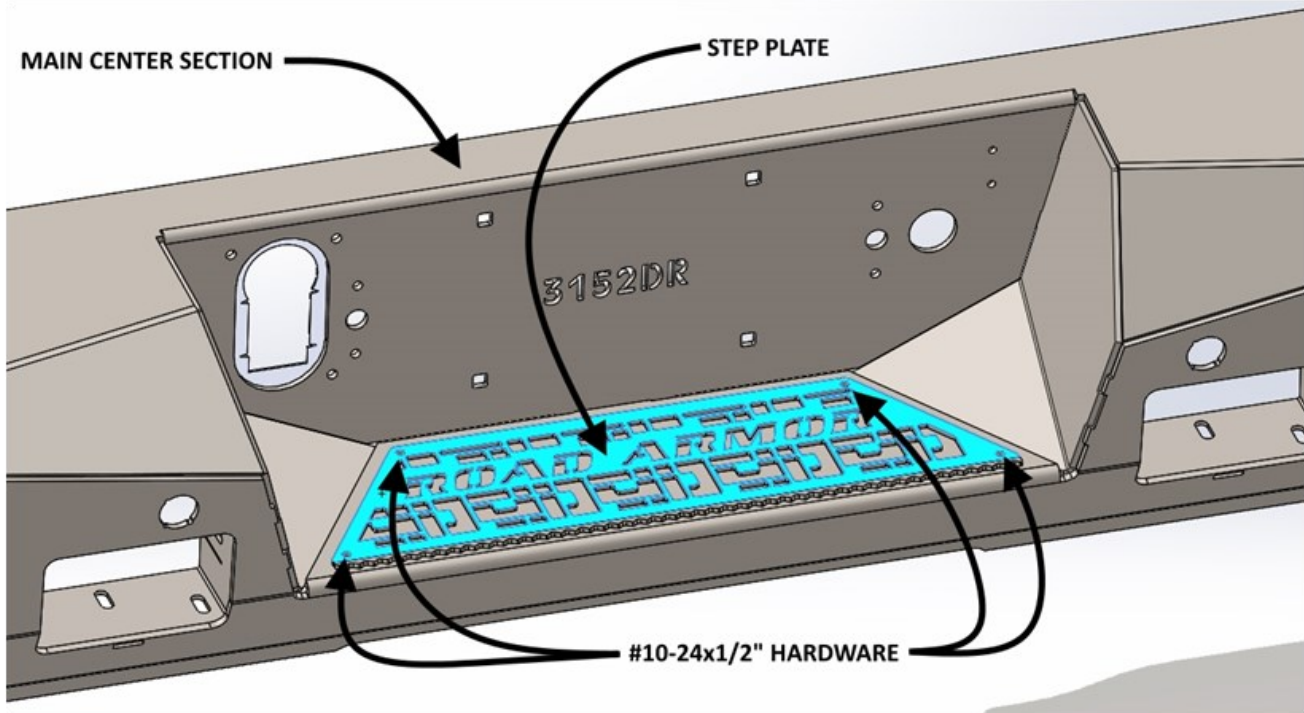


- 11** Install Kit RA LOGO SHIELD onto Main Center Section.



**12** Install Kit License Plate Lights Using Kit 4 - #10-32x3/4" Flat Head Bolts & Lock Nuts

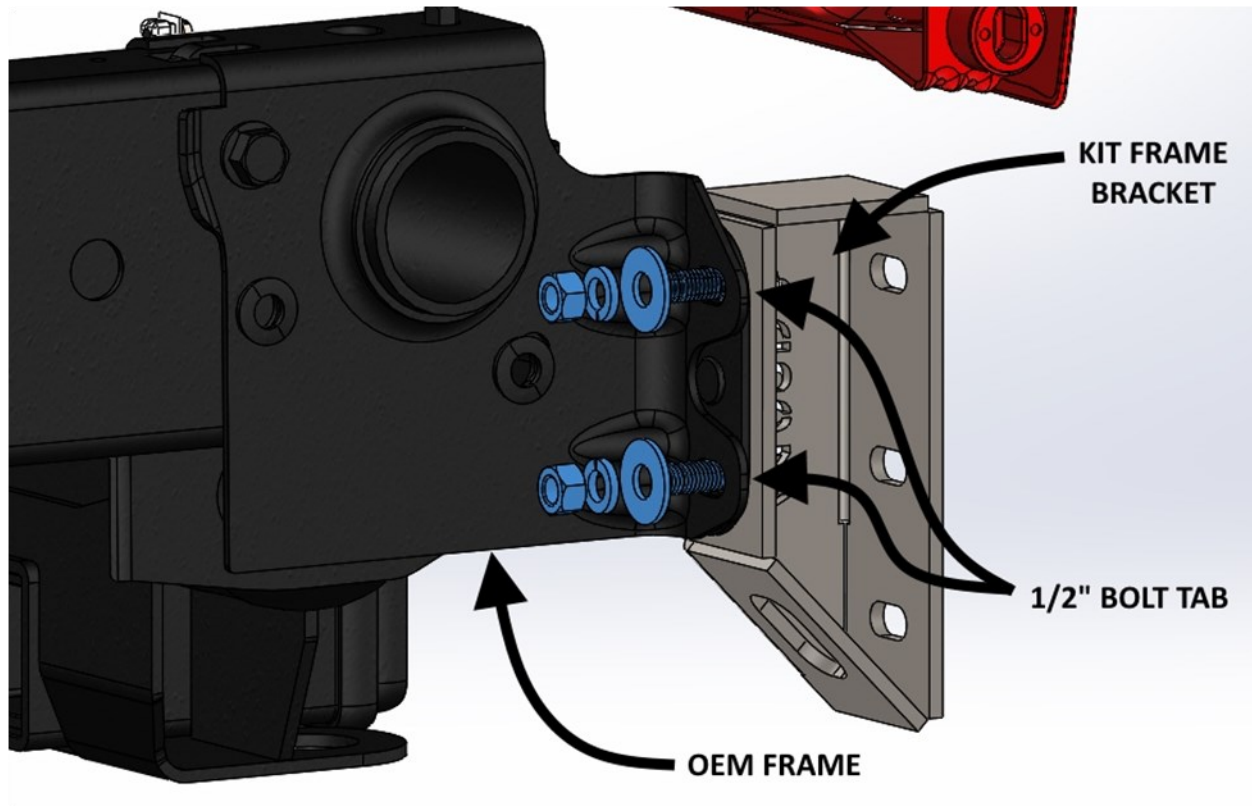
**13** Install EACH Kit Step Plate onto Main Center Section & Corner Pods using 4 - #10-24x1/2" Bolts & Lock Nuts.



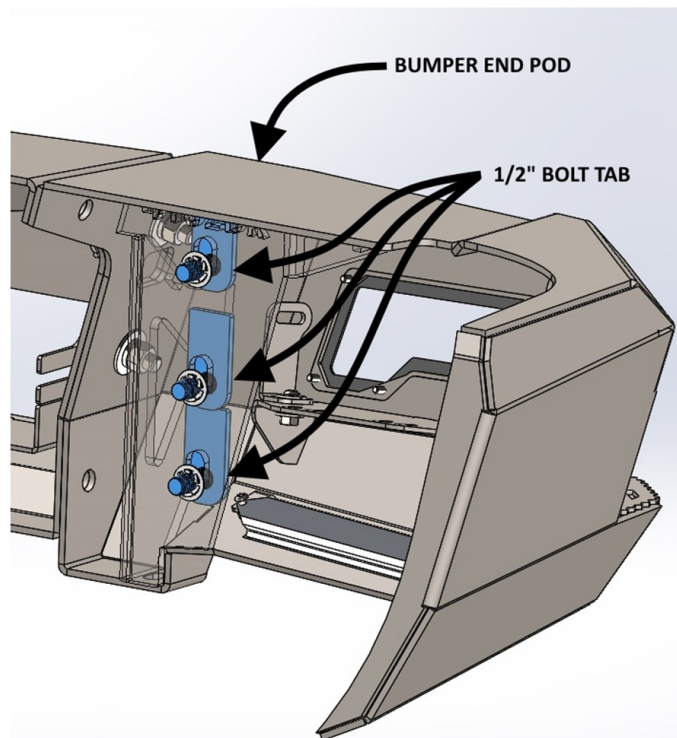


**14** Install all OE Rear Sensor Housings, Sensors and Harnesses. Secure them to bumper.

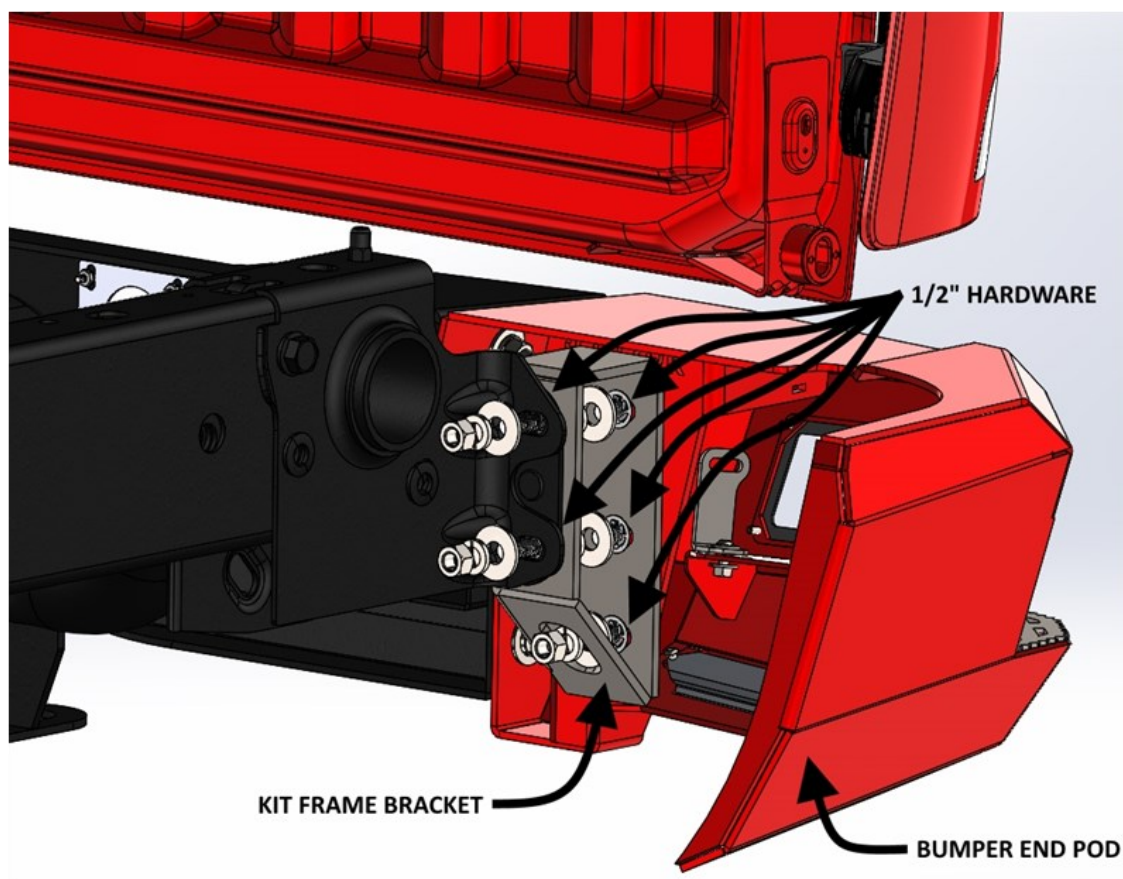
**15** Install Kit Frame Brackets using kit 2 – ½" Bolt Tabs.



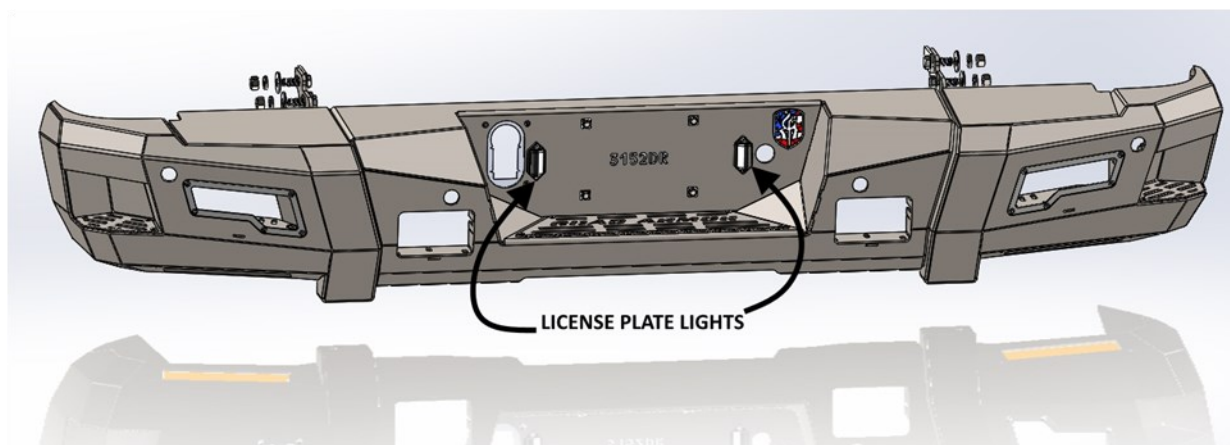
**16** Install kit 3 - ½" Bolt Tabs into each End Pod Bumper Bracket with ½" Retainer Washers. (against bumper)

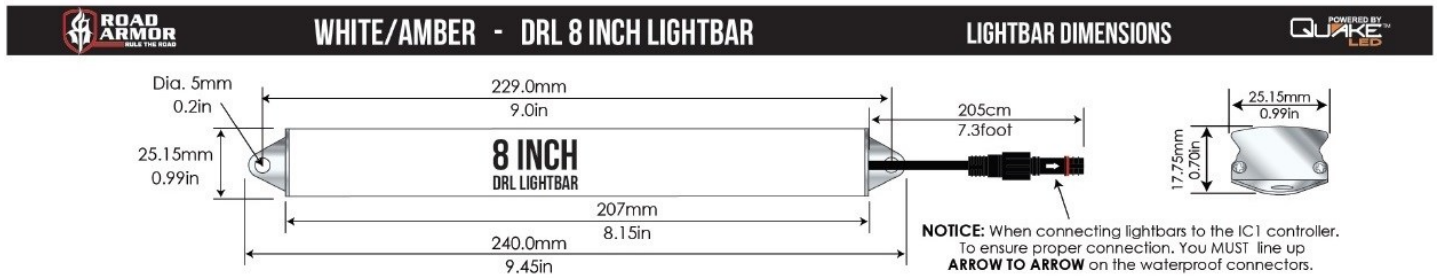
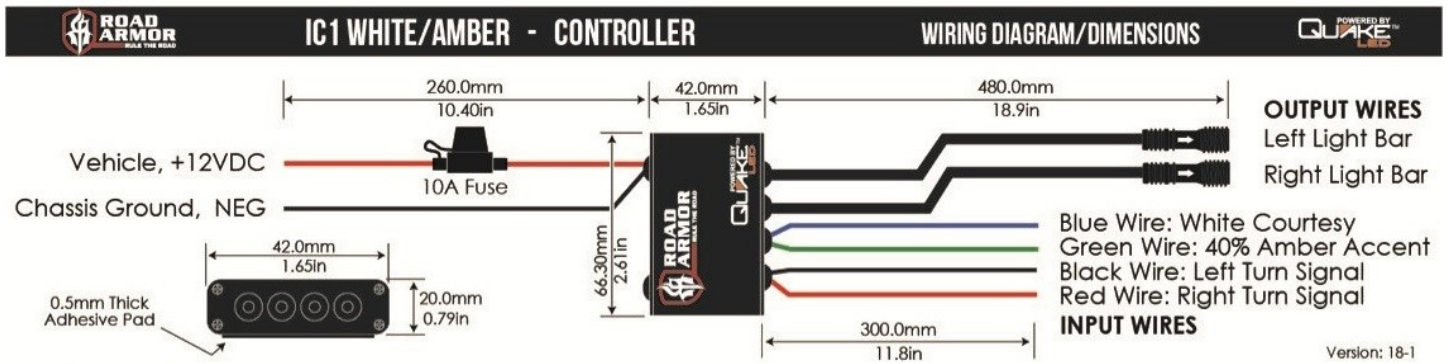


- 17** Install Bumper assembly onto Kit Frame Brackets using ½" Nuts, Lock Washers and Washers.



- 18** Wire Kit License Plate Lights into Factory harness.

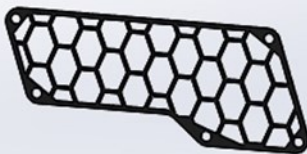




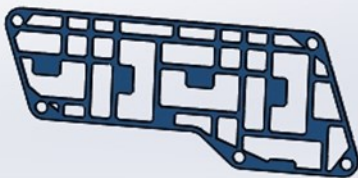
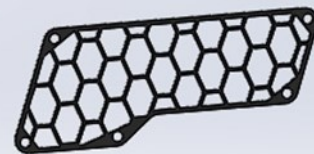




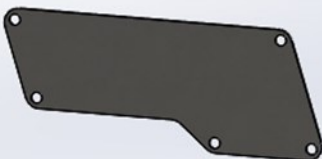
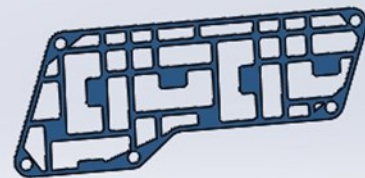
**BEAUTY RING MESH KIT**



**HYVE MESH KIT**



**iD MESH KIT**



**BLOCK-OFF PLATE KIT**

