



**WINCH**



**NON-WINCH**



# INSTALL INSTRUCTIONS

**SAHARA FRONT BUMPER**

**“CHROME” BUMPER ONLY**

**Product Range : SA409XX**

**Application : 2009-2018 Ram 1500**

## I WARNING

Read the instructions completely before beginning installation. Before tightening bolts, drilling or cutting where required, check to make sure there are no obstructions such as brake, fuel or electrical lines which may be damaged. Also keep in mind this is an after-market product and MAY require minor shimming and/or trimming, reaming, etc. for proper fit. Road Armor is not responsible for any damages to vehicle.

## ⓘ IMPORTANT NOTICE

- Be sure to inspect and test fit your product to ensure proper fitment before having it coated, painted, bed lined, etc.
- Road Armor will not be responsible for the cost of coating your unit if any problems with fit or finish are not noted and addressed beforehand.

## SAFETY FIRST!

- FOLLOW ALL INSTRUCTIONS, YOUR SAFETY AND THE SAFETY OF OTHERS IS MOST IMPORTANT.
- WEAR APPROPRIATE EYE PROTECTION AND EXERCISE CAUTION WHEN DRILLING / CUTTING

## REQUIRED TOOLS

SAE &amp; Metric Sockets and Wrenches

Black Spray Paint

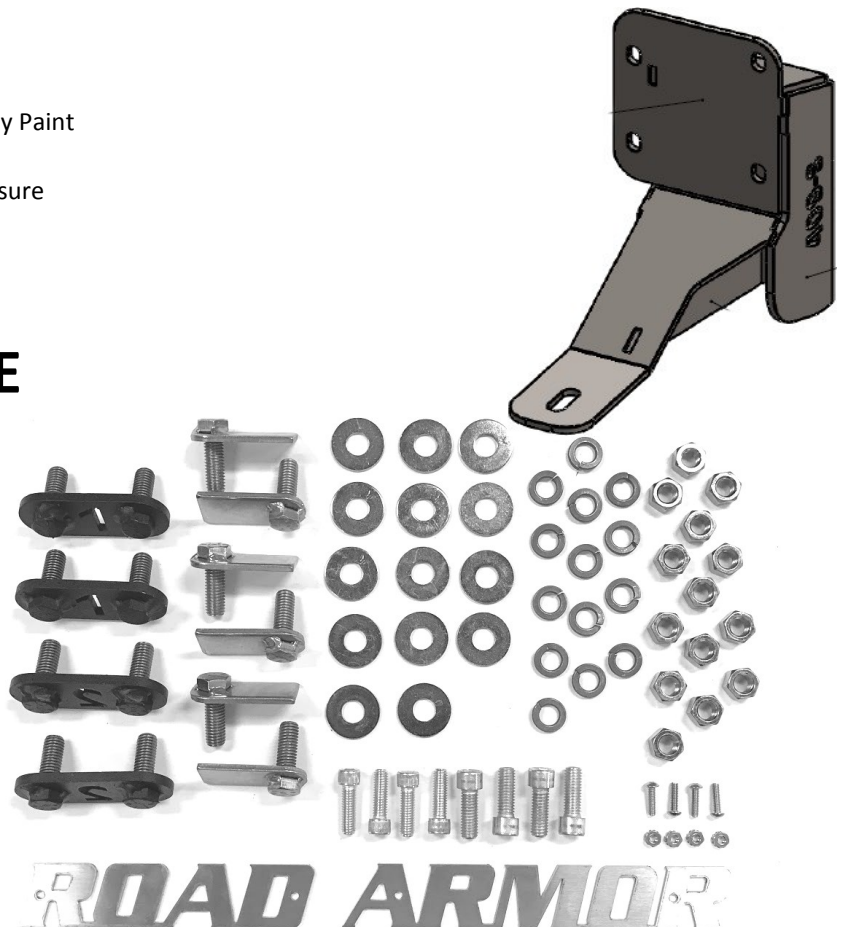
Adjustable Pliers

Tape Measure

Drill

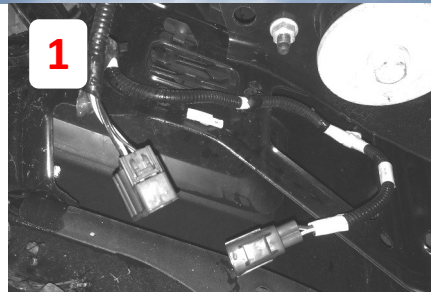
## INCLUDED HARDWARE

- 6 1.5" SINGLE BOLT TAB (ZINC)
- 14 1/2" Flat Washer
- 14 1/2" Split Lock Washer
- 14 1/2"-13 Grade 8 Hex Nut
- 2 #1 Double Bolt Plates (Top)
- 2 #2 Double Bolt Plates (Bottom)
- 4 Bolt Retainer
- 1 Winch Bolt Kit
- 4 #10 Stainless Bolts and Nuts (LOGO)





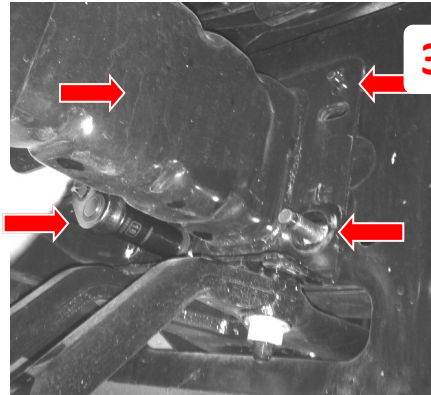
**1** Disconnect bumper harness plug located on the driver side near the front body mount.



**2** Remove plastic fascia & grille from truck to properly remove bumper.



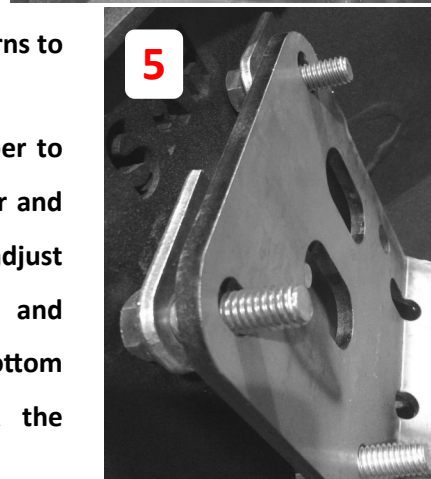
**3** Unscrew the four nuts on the back side of the frame and remove OEM chrome bumper.



**4** Remove the factory tow hooks.



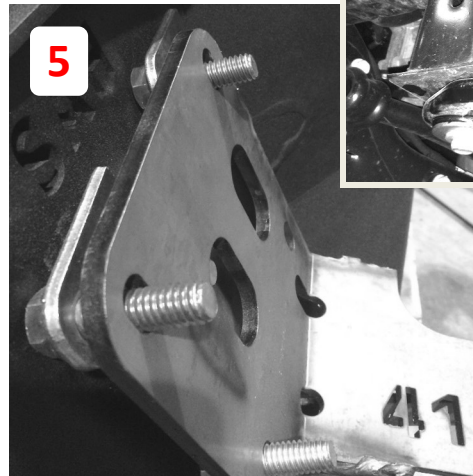
**5** Attach the Sahara brackets to the bumper first. Make sure to put the numbered bolt tabs facing out as shown.



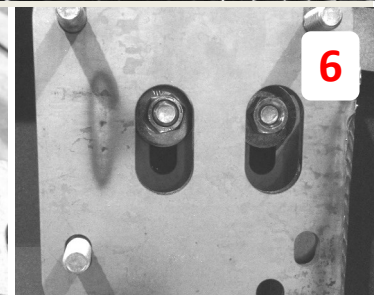
**6** Snug the bracket down to the bumper.



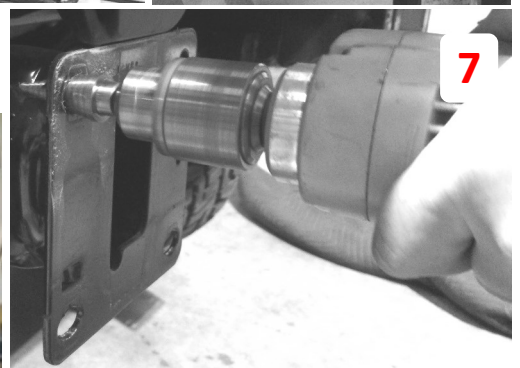
**7** Drill out all holes in OEM frame horns to accommodate the 1/2" bolt tabs.



**8** Fit up the plastic fascia and bumper to the frame, install and snug washer and nut on either side and begin to adjust fitment. Once satisfied with up and down adjustment tighten the bottom bracket to bumper bolt to fix the bracket in place.



**9** Now remove the bumper again and fully tighten the brackets to the bumper. Once this is completed reinstall bumper and plastic fascia.



**FINISHED**