



# INSTALL INSTRUCTIONS

**CHEVY & GMC HD Rear Vaquero Non-Winch Bumper**

**Product : 3202VR**

**Application : 2020-23 GMC & CHEVY 2500HD 3500HD**

## I WARNING

Read the instructions completely before beginning installation. Before tightening bolts, drilling or cutting where required, check to make sure there are no obstructions such as brake, fuel or electrical lines which may be damaged. Also keep in mind this is an aftermarket product and **MAY** require minor shimming and/or trimming, reaming, etc. for proper fit. Road Armor is not responsible for any damages to vehicle.

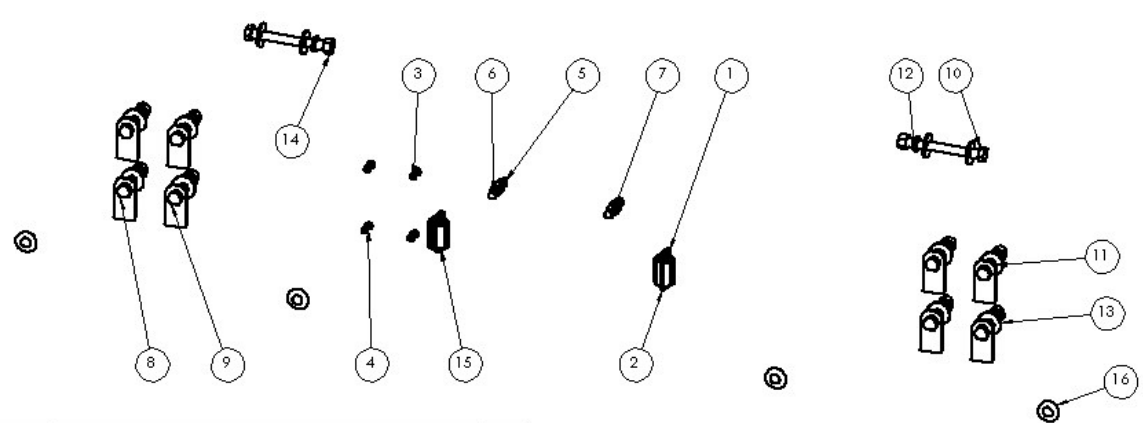
## i IMPORTANT NOTICE

- Be sure to inspect and test fit your product to ensure proper fitment before having it coated, painted, bed lined, etc.
- Road Armor will not be responsible for the cost of coating your unit if any problems with fit or finish are not

## SAFETY FIRST!

- FOLLOW ALL INSTRUCTIONS, YOUR SAFETY AND THE SAFETY OF OTHERS IS MOST IMPORTANT.
- WEAR APPROPRIATE EYE PROTECTION AND EXERCISE CAUTION WHEN DRILLING / CUTTING

## INCLUDED HARDWARE



ITEM NO.	PART NUMBER	DESCRIPTION	QTY.
1	37406	#8-32 Zinc Finish Steel with External Tooth Lockwasher K-Lock Nut	4
2	73854	#8-32 x 3/4" ASTM F879 Hex Drive Grade 18-8 Stainless Steel Flat Socket Cap Screw	4
3	73794	#10-24 x 3/4" ASTM F879 Hex Drive Grade 18-8 Stainless Steel Button Socket Cap Screw	4
4	37407	#10-24 Zinc Finish Steel with External Tooth Lockwasher K-Lock Nut	4
5	1137410	1/4"-20 Zinc Finish Steel with External Tooth Lockwasher K-Lock Nut	2
6	11003	1/4"-20 x 3/4" ASTM A307 Grade A Zinc Finish Hex Bolt	2
7	33078	1/4" Flat Washer, Low Carbon, SAE, Type A, Zinc	4
8	11218-05078	1.5" single bolt tab	4
9	11218-05079	2" SINGLE BOLT TAB (ZINC)	4
10	15221	1/2"-13 x 4-1/2" Grade 8 Yellow Zinc Finish Hex cap screw	2
11	0162849	1/2" Bolt 15/16" O.D. Zinc Pushnut Bolt Retainer	4
12	33895	1/2" Yellow Zinc Finish High Alloy Medium Split Lock Washer	10
13	33861	1/2" x 1.375" OD Thru-Hardened Yellow Zinc Finish Steel USS General Purpose Flat Washer	12
14	36410	1/2"-13 Yellow Zinc Finish Grade 8 Finished Hex Nut	10
15	license plate light	R.A.	2
16	1 inch plug		4

### \*\* ROAD ARMOR USE ONLY \*\*

**PROPRIETARY AND CONFIDENTIAL:**  
 THIS INFORMATION CONTAINS THE  
 TRADE SECRETS AND/OR PROPRIETARY  
 INFORMATION OF ROAD ARMOR. IT IS TO BE  
 USED ONLY FOR THE PURPOSES SPECIFIED  
 HEREIN. IT IS NOT TO BE REPRODUCED,  
 COPIED, OR DISCLOSED TO ANY OTHER  
 PERSON OR ENTITY WITHOUT THE WRITTEN  
 PERMISSION OF ROAD ARMOR.

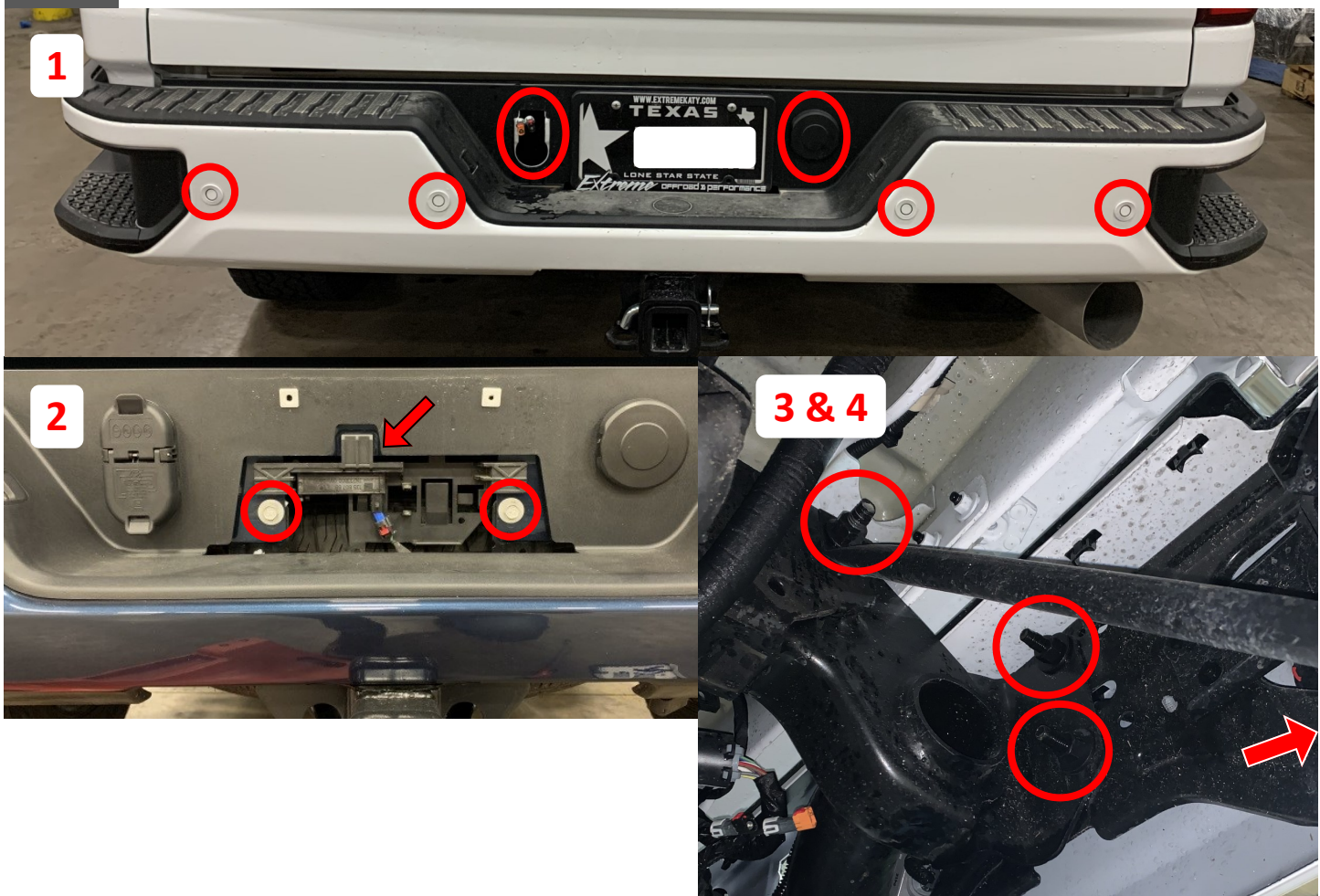
DATE	BY	REVISION
06/01/2022	Colin Wark	1

3202VR Bolt Kit

ROAD ARMOR  
RULE THE ROAD

SEE DWG. NO. **B** 3202VR Bolt Kit  
 SCALE: 1:5 WEIGHT: SHEET 1 OF 1

- 1 Unplug all wire harnesses including sensor, keyless entry, trailer plug and camera.
- 2 Remove the two bolts from behind the license plate using 13mm socket wrench.
- 3 Remove the 2 bolts on the backside of each bumper corner using 18mm socket wrench.
- 4 Remove the outside support bracket bolt on the driver and passenger sides bumper using 15mm socket wrench. Continue removing bracket by 21mm socket wrench to remove nut.
- 5 Remove rear bumper.
- 6 Disassemble rear internal bumper brackets followed by removing blinds-pot and back-up sensors, etc... from rear bumper

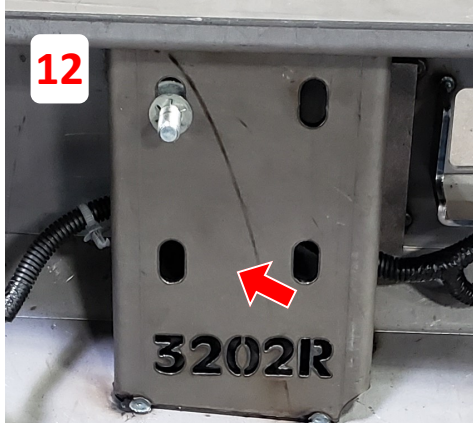
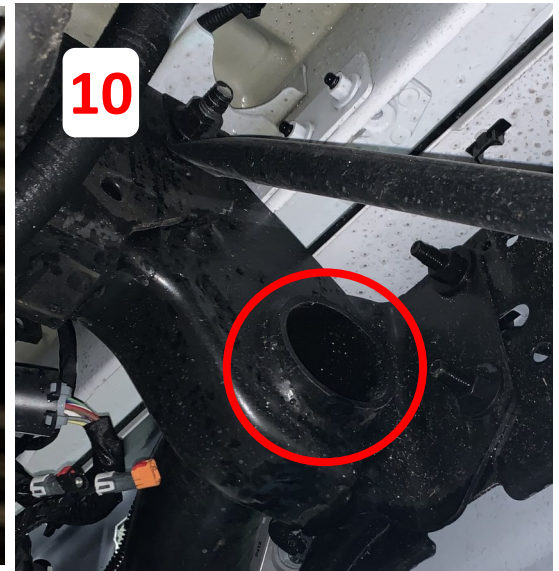
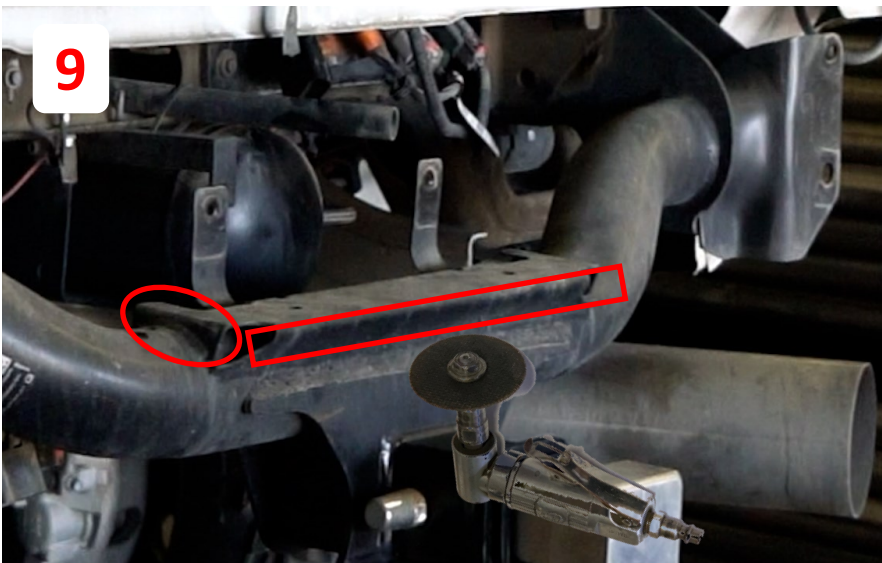


**NOTE** To remove the four sensors: Carefully spread the housing clips and push the sensor out of the housing. With the sensor removed, press the tabs in and push the housing out of the bumper .

- 7 Remove the 21mm bolts from the bottom of the frame.
- 8 Reinstall the keyless entry sensor to the License Plate Hardware on the Road Armor Bumper using zip ties. The sensors can now be plugged in.



- 9 Remove/Cut off factory center bumper support from hitch attached to center of hitch.
- 10 If hitch tube extends more than 1/4" it may need to be trimmed down for bracket to sit level.
- 11 Install all park sensors and harness into bumper as they were on the OEM bumper.
- 12 Install upper 1/2" bolt tabs using retainer washers. 2" bolt tabs are used on the inside slots and 1.5" bolt tabs are used on the outside slots.
- 13 Splice Road Armor license plate lights into existing license plate wiring harness.
- 14 Install all accessories at this time. (Rear aftermarket cube back-up lights)
- 15 Drill out rear hitch bumper support brackets to 9/16" to match the support brackets. Install support bracket using 1—1/2" x 4 1/2" bolt, washers & nut as well as OEM hitch bolt and nut.



**\*NOTE: DVR Side Hitch Tube May Need 1/4" Material Removed From End Of Hitch Tube To Provide Clearance For Support Bracket To Sit Flush On Mounting Bracket.\***



- 16 Install bumper onto hitch and support brackets, align and secure bumper using 1/2" hardware.
- 17 Reconnect all harnesses and ensure proper operations of sensors and lighting.

