



# **INSTALL INSTRUCTIONS**

## **VAQUERO FRONT BUMPER**

**Product Range : 3202VF#B**

**Application : 2020+ CHEVY 2500HD 3500HD**

## I WARNING

**Read the instructions completely before beginning installation. Before tightening bolts, drilling or cutting where required, check to make sure there are no obstructions such as brake, fuel or electrical lines which may be damaged. Also keep in mind this is an aftermarket product and MAY require minor shimming and/or trimming, reaming, etc. for proper fit. Road Armor is not responsible for any damages to vehicle.**

**IMPORTANT NOTICE**

- Be sure to inspect and test fit your product to ensure proper fitment before having it coated, painted, bed lined, etc.
- Road Armor will not be responsible for the cost of coating your unit if any problems with fit or finish are not noted and addressed beforehand.

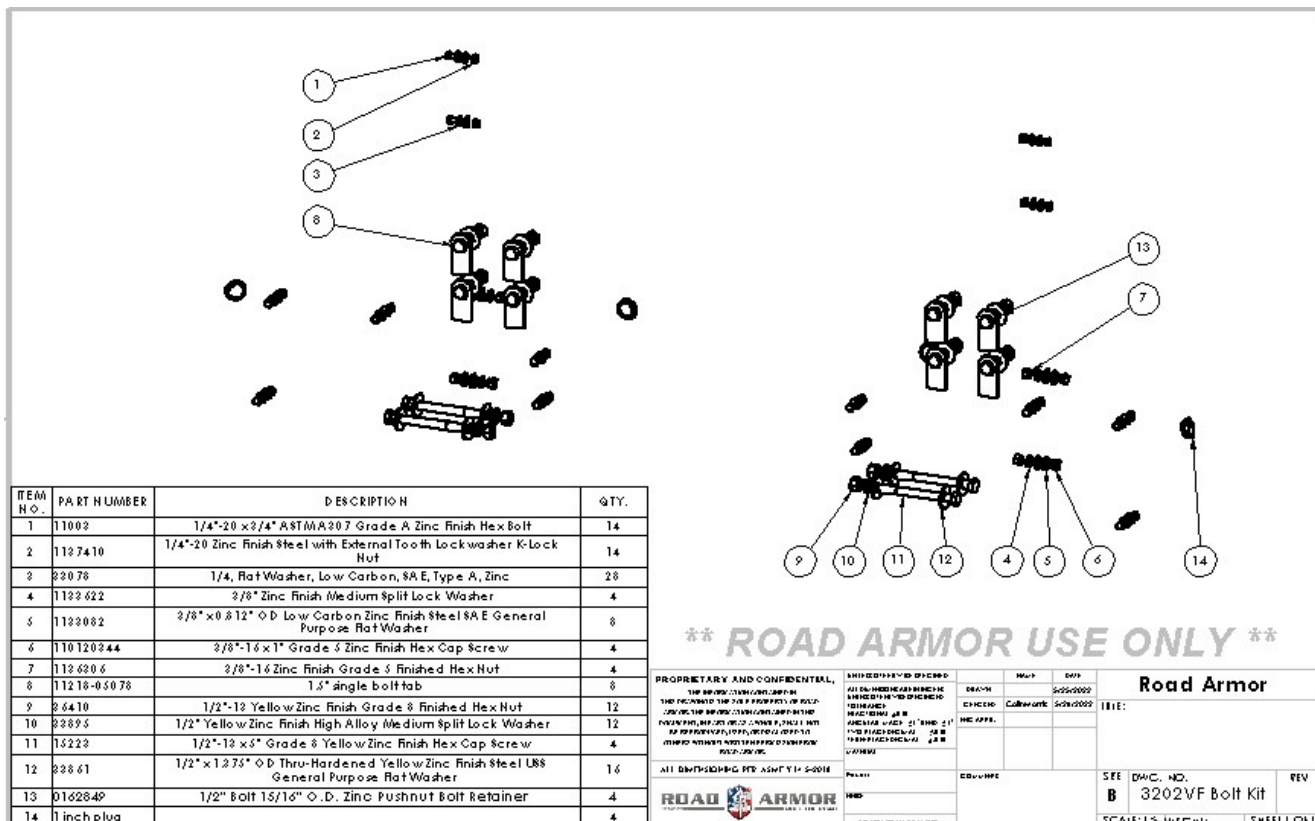
# SAFETY FIRST!

- FOLLOW ALL INSTRUCTIONS, YOUR SAFETY AND THE SAFETY OF OTHERS IS MOST IMPORTANT.
- WEAR APPROPRIATE EYE PROTECTION AND EXERCISE CAUTION WHEN DRILLING / CUTTING

## REQUIRED TOOLS

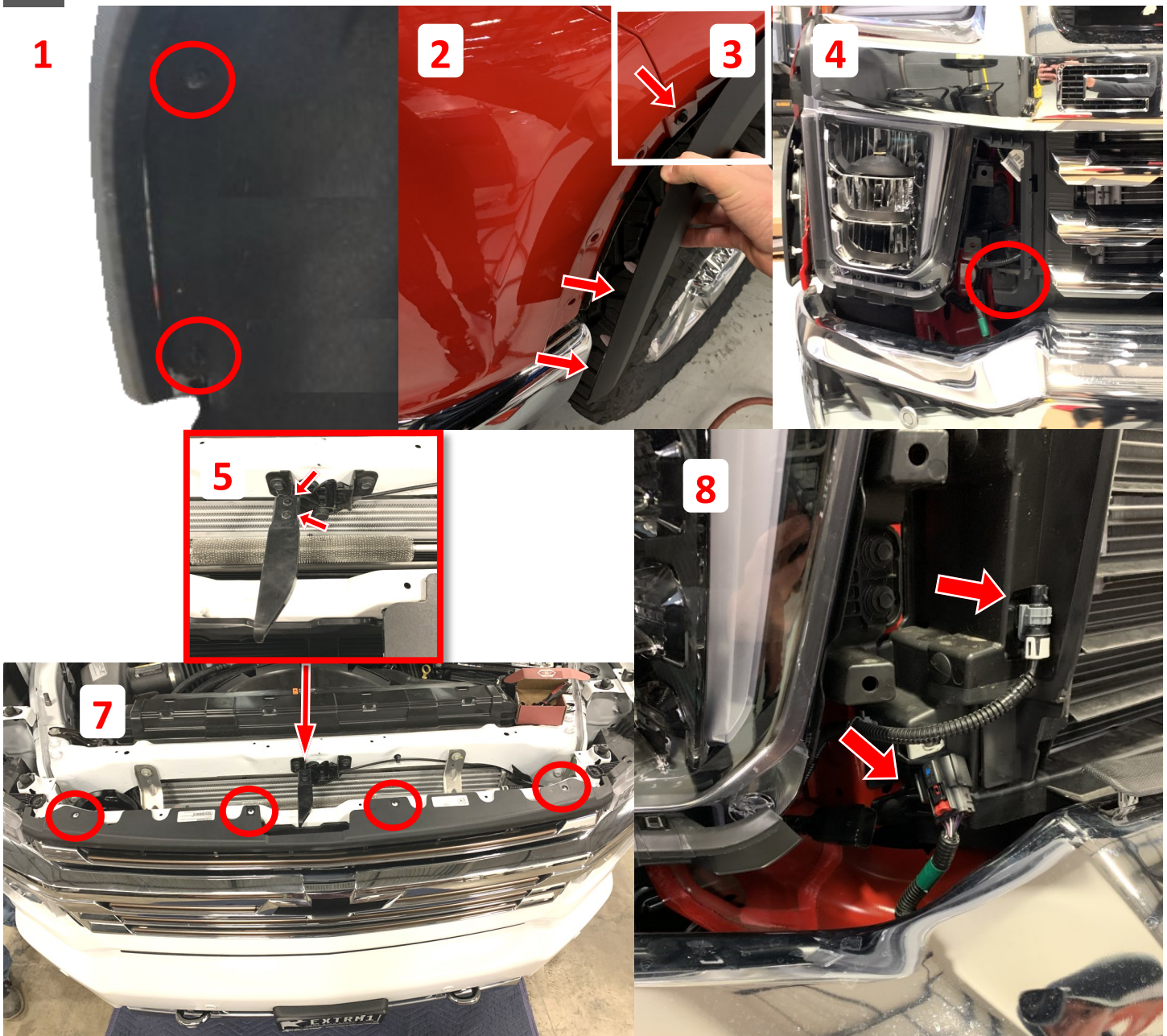
SAE & Metric Sockets and Wrenches    Black Spray Paint    Allen Wrenches    Drill & 1/2—9/16 or step bit    Tape Measure

## INCLUDED HARDWARE



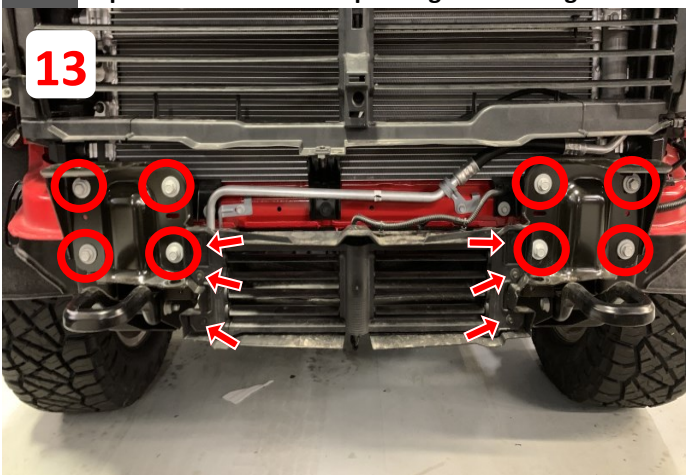
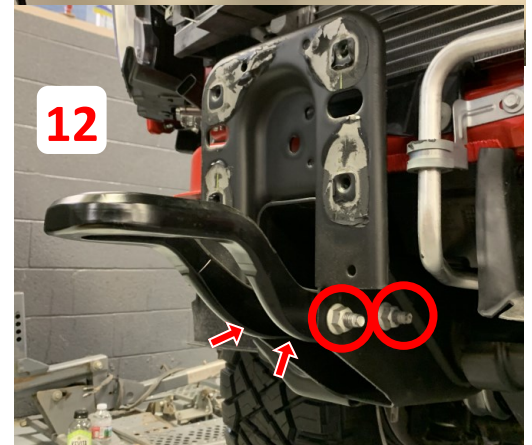
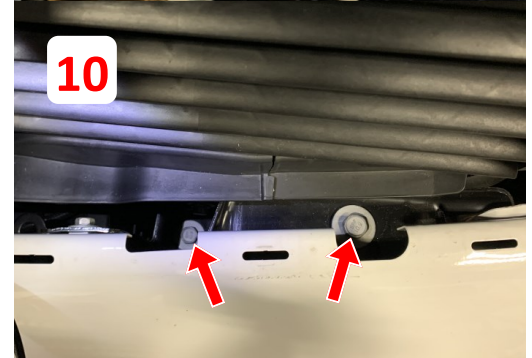


- 1 Use a T10 star head socket wrench to remove the two bolts from both the passenger and driver side wheel wells.
- 2 Use a body pry tool to carefully remove the front of the fender flare away from the body. Use a 7mm socket wrench to remove the bolt on the valance.
- 3 With the 7mm bolt removed use a body pry tool to remove the valance from the truck.
- 4 Use a 10mm socket wrench to remove the two bolts at the base of the grill.
- 5 Use a T10 socket wrench to remove the two bolts holding the hood latch on. With the hood latch taken off you can remove the grill cover. (Arrows shown.)
- 6 Use a body pry tool to remove the nine push pins holding the grill cover.
- 7 Use a 10mm socket wrench to remove the four bolts on the top of the grill. (Circled)
- 8 With the bolts removed, carefully take the grill off the truck. While taking off the grill, unplug the camera harness on the passenger side of the truck.





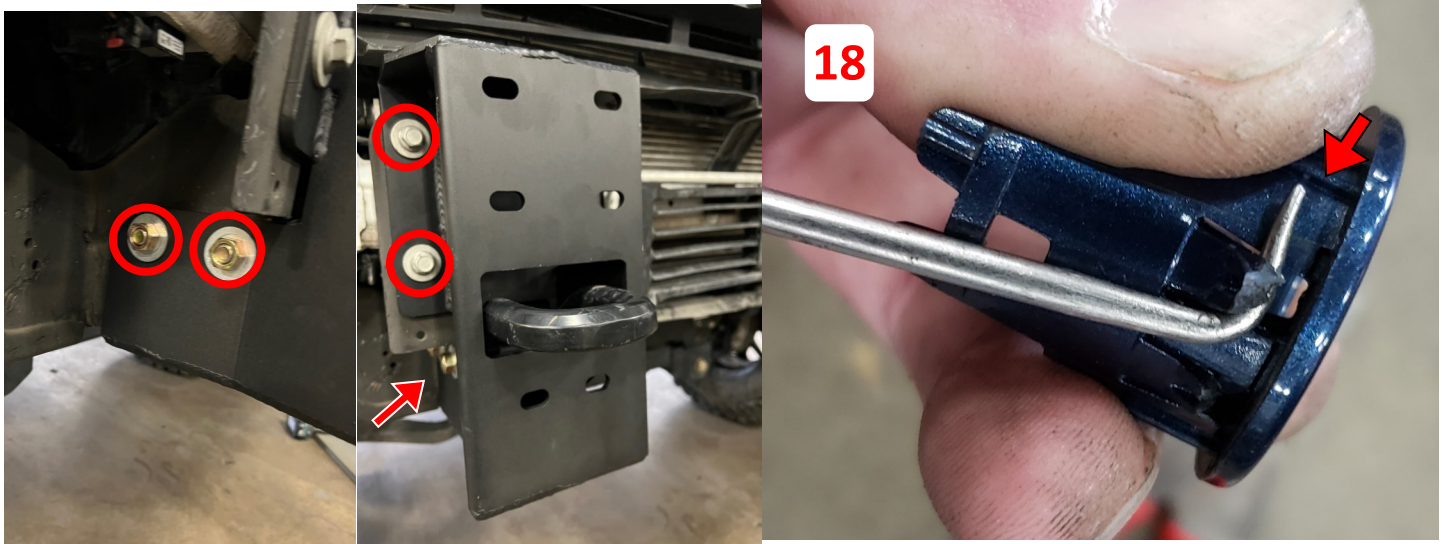
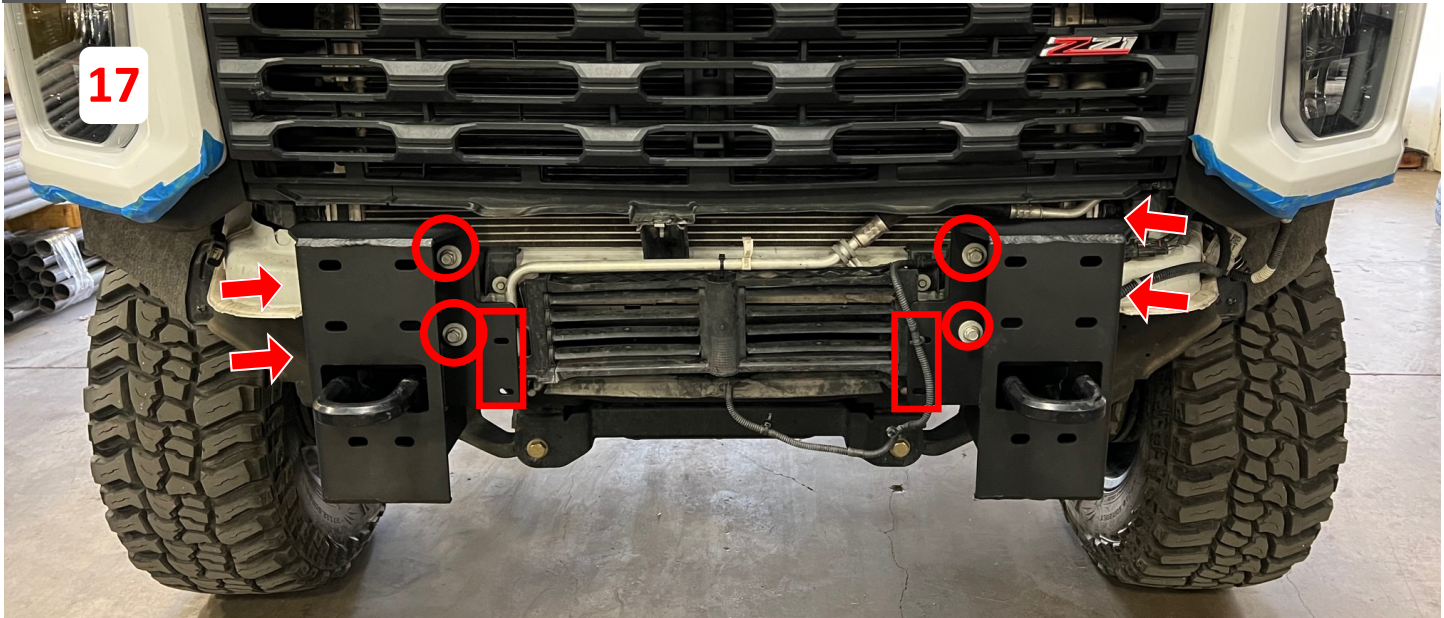
- 9 From under the truck: use a 15mm socket wrench to remove the two back bolts on the bumper support bracket on both sides
- 10 With the grill removed; access the bumper mounting bolts on the top deck. Use a 15mm socket wrench to remove the two bolts one of the top and one on the bottom. The bumper can now be removed from the truck.
- 11 As you remove the bumper, unplug the sensor, heater plug, and lower louver harnesses located on the driver side of the truck.
- 12 If equipped, remove the factory tow hooks by using an 18mm socket wrench to unfasten the two bolts in the frame.
- 13 Use a 15mm socket wrench to take four bolts holding the mounting plates and lower louvers to the frame horns.
- 14 If equipped, disconnect the lower louvers from the mounting plates by using a 7mm socket wrench to remove the six bolts. Set bolts aside for later use.
- 15 If equipped, remove the engine heater plug located on the driver side of the truck bumper. Push the bumper in against the spring and turn counterclockwise, once unclipped pull out from the bumper.
- 16 Remove all brackets covering sensors followed by carefully remove the four sensors and sensor housings from the bumper by spreading the housing clips out and pushing the sensor out simultaneously. Make sure to mark the position of each housing for installing into the front bumper. Remove the sensor housings from the bumper by pressing the retainer clips in on the sides and pushing the housing out.





- 17** Loosely install kit frame brackets using Qty: 4 – FACTORY (OEM) 10mm Bolts through the front of each frame bracket. Continue by reinstalling tow hooks using Qty: 2 – ½” Bolt, Nuts, Lock Washers and Washers through each bracket and frame where OEM tow hooks attached. If equipped, attach shutter system to inside bracket holes (rectangle) with 4 - 1/4” Bolts

**\*\*Drill / Open Holes To 1/2” Where Needed\*\***



- 18** Install all sensor into Vaquero bumper as were in factory bumper. Trim 1/16” off sensor housing for proper fit. Zip tie can be used on back side to secure each sensor assembly to bumper.
- 19** Install bumper assembly using 4– ½” bolts tabs, 1/2 nuts, lock washers and washers at each frame end. Align bumper and be sure to leave approximately 3/8” gap between headlamp and bumper. (Doing so will prevent damage to fascia and bumper.) Once bumper is aligned; tighten all remaining bumper bracket hardware.



**20** Plug all disconnected harnesses and reinstall factory grille and fascia in reverse order.

**21** Trim inner fender liner to fit profile of Vaquero bumper.



**\*MINIMUM 3/8"+ Gap  
Required; DO NOT Install  
Directly Against Front Facia\***

