



INSTALL INSTRUCTIONS

CHEVY & GMC HD Rear Evolution Non-Winch Bumper

Product : 3202ER0B

Application : 2020-23 GMC & CHEVY 2500HD 3500HD

I WARNING

Read the instructions completely before beginning installation. Before tightening bolts, drilling or cutting where required, check to make sure there are no obstructions such as brake, fuel or electrical lines which may be damaged. Also keep in mind this is an after-market product and MAY require minor shimming and/or trimming, reaming, etc. for proper fit. Road Armor is not responsible for any damages to vehicle.

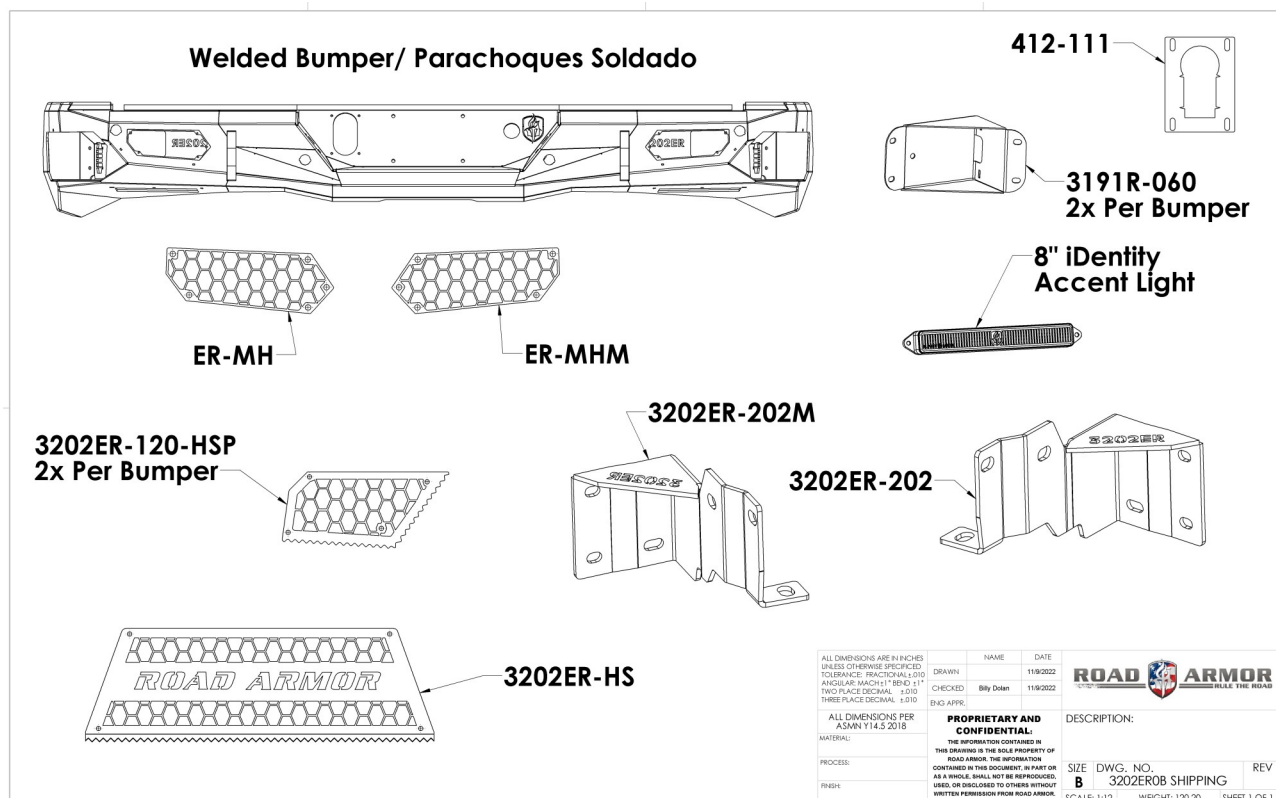
IMPORTANT NOTICE

- Be sure to inspect and test fit your product to ensure proper fitment before having it coated, painted, bed lined, etc.
- Road Armor will not be responsible for the cost of coating your unit if any problems with fit or finish are not noted and addressed beforehand.

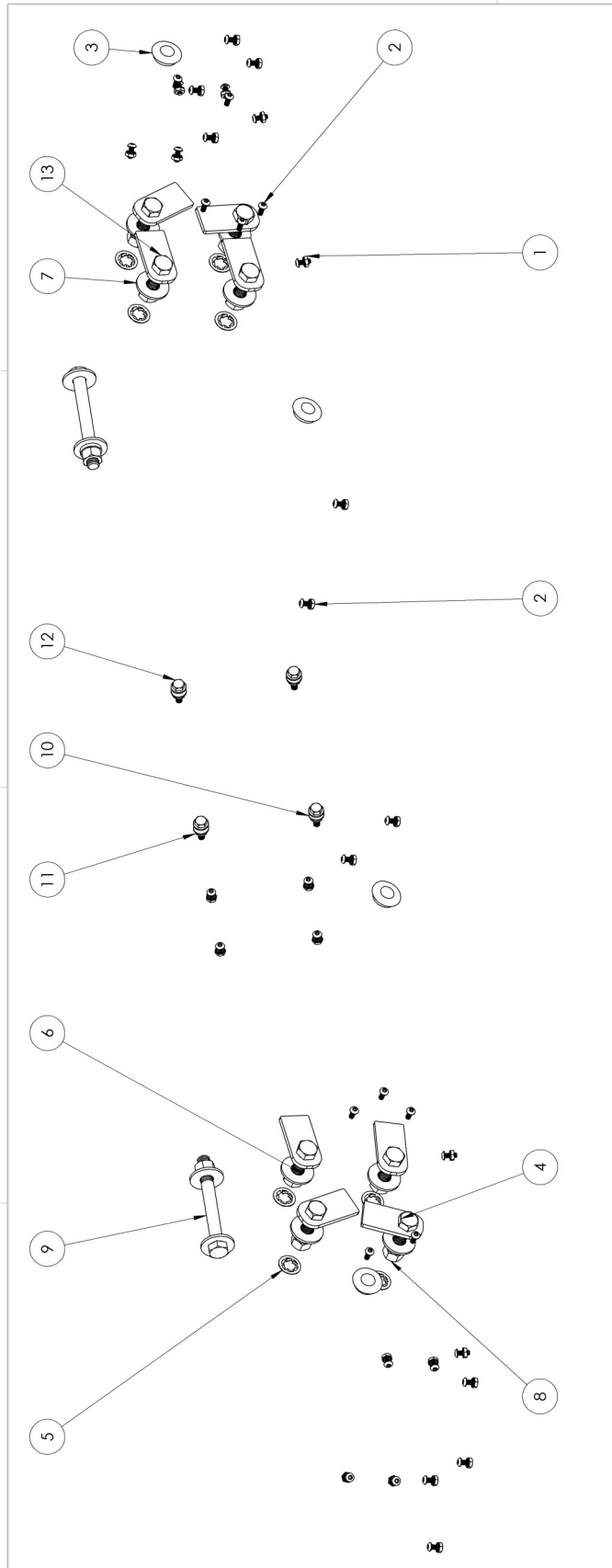
SAFETY FIRST!

- FOLLOW ALL INSTRUCTIONS, YOUR SAFETY AND THE SAFETY OF OTHERS IS MOST IMPORTANT.
- WEAR APPROPRIATE EYE PROTECTION AND EXERCISE CAUTION WHEN DRILLING / CUTTING

INCLUDED PARTS



INCLUDED HARDWARE



ITEM NO.	PART NUMBER	DESCRIPTION	QTY.
1	37407	# 10-24 Zinc Finish Steel with External Tooth Lockwasher K-Lock Nut	28
2	94030	# 10-24 x 1/2" ASTM F835 Hex Drive Zinc Finish Alloy Steel Button Socket Cap Screw	38
3	1 inch plug	1 inch Dome Plug	4
4	11218-05078	1.5" Single Bolt Tab (ZINC)	4
5	0162849	1/2" Bolt 15/16" O.D. Zinc Push Nut Bolt Retainer	8
6	33895	1/2" Yellow Zinc Finish High Alloy Medium Split Lock Washer	10
7	33861	1/2" x 1.375" OD Thru-Hardened Yellow Zinc Finish Steel USS General Purpose Flat Washer	12
8	36410	1/2"-13 Yellow Zinc Finish Grade 8 Finished Hex Nut	10
9	15221	1/2"-13 x 4-1/2" Grade 8 Yellow Zinc Finish Hex Cap Screw	2
10	33078	1/4" x 0.625" OD Low Carbon Zinc Finish Steel SAE General Purpose Flat Washer	8
11	1137410	1/4"-20 Zinc Finish Steel with External Tooth Lockwasher K-Lock Nut	4
12	11003	1/4"-20 x 3/4" ASTM A307 Grade A Zinc Finish Hex Bolt	4
13	11218-05079	2" SINGLE BOLT TAB (ZINC)	4

ALL DIMENSIONS ARE IN INCHES
 ANGULAR: MACH ±1° 95ND ±1°
 TOLERANCE: FRACTIONAL ±.010
 DECIMAL ±.005
 THREE PLACE DECIMAL ±.010

ALL DIMENSIONS PER
 ASME Y14.5 2016

MATERIAL

PROCESS

FINISH

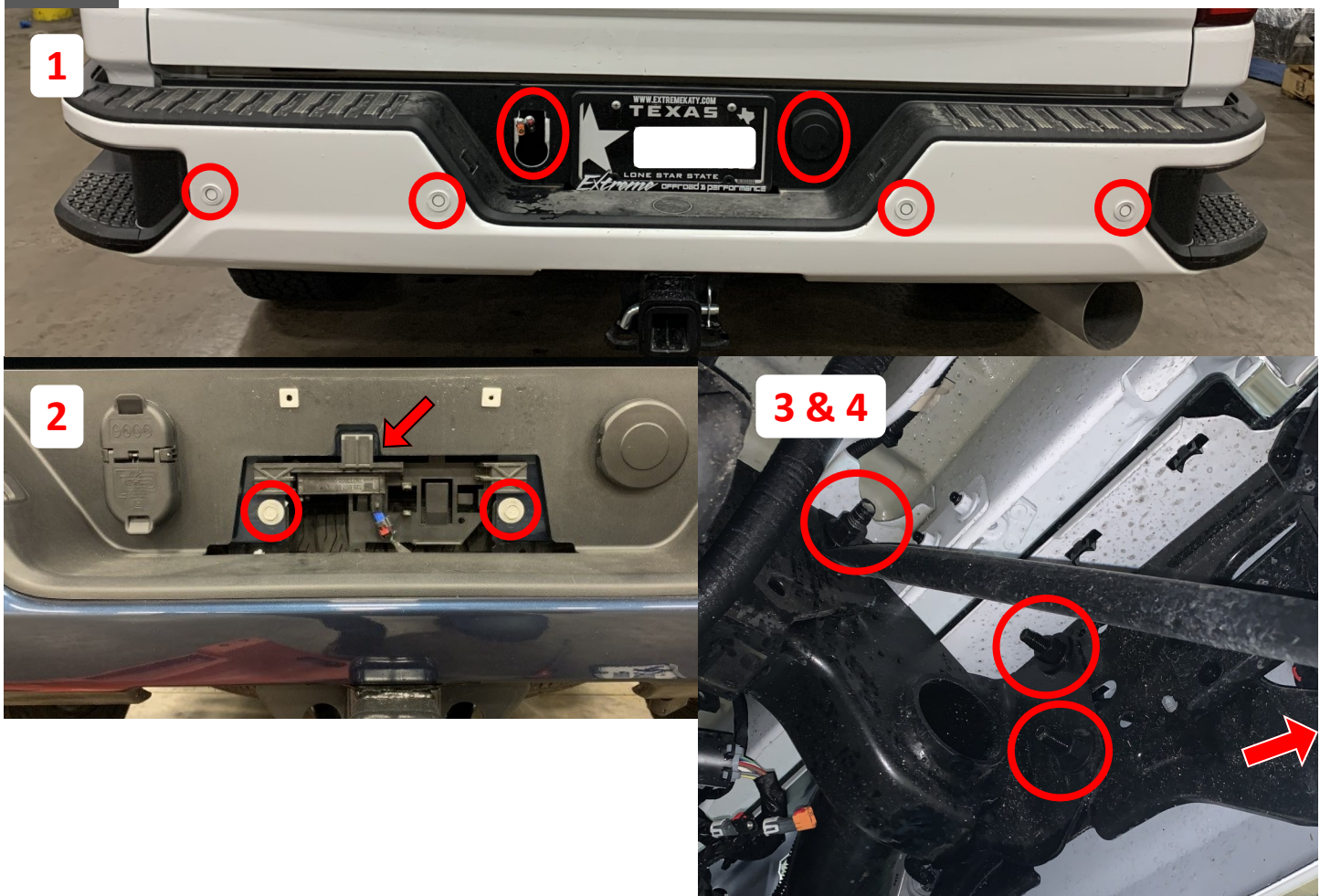
DATE: 11/9/2022
 NAME: Billy Dolan
 DRAWN: 12/21/2022
 CHECKED: 12/21/2022
 ENG APPR:

PROPRIETARY AND CONFIDENTIAL:
 THE INFORMATION CONTAINED IN THIS DOCUMENT IS THE PROPERTY OF ROAD ARMOR. THE INFORMATION CONTAINED HEREIN IS NOT TO BE REPRODUCED, COPIED, OR TRANSMITTED IN ANY FORM OR BY ANY MEANS, ELECTRONIC OR MECHANICAL, WITHOUT WRITTEN PERMISSION FROM ROAD ARMOR.

DESCRIPTION:

SIZE: DWG. NO. **B** 3202ER-BOLTKIT
 SCALE: 1:12 WEIGHT: 0.58
 REV SHEET 1 OF 1

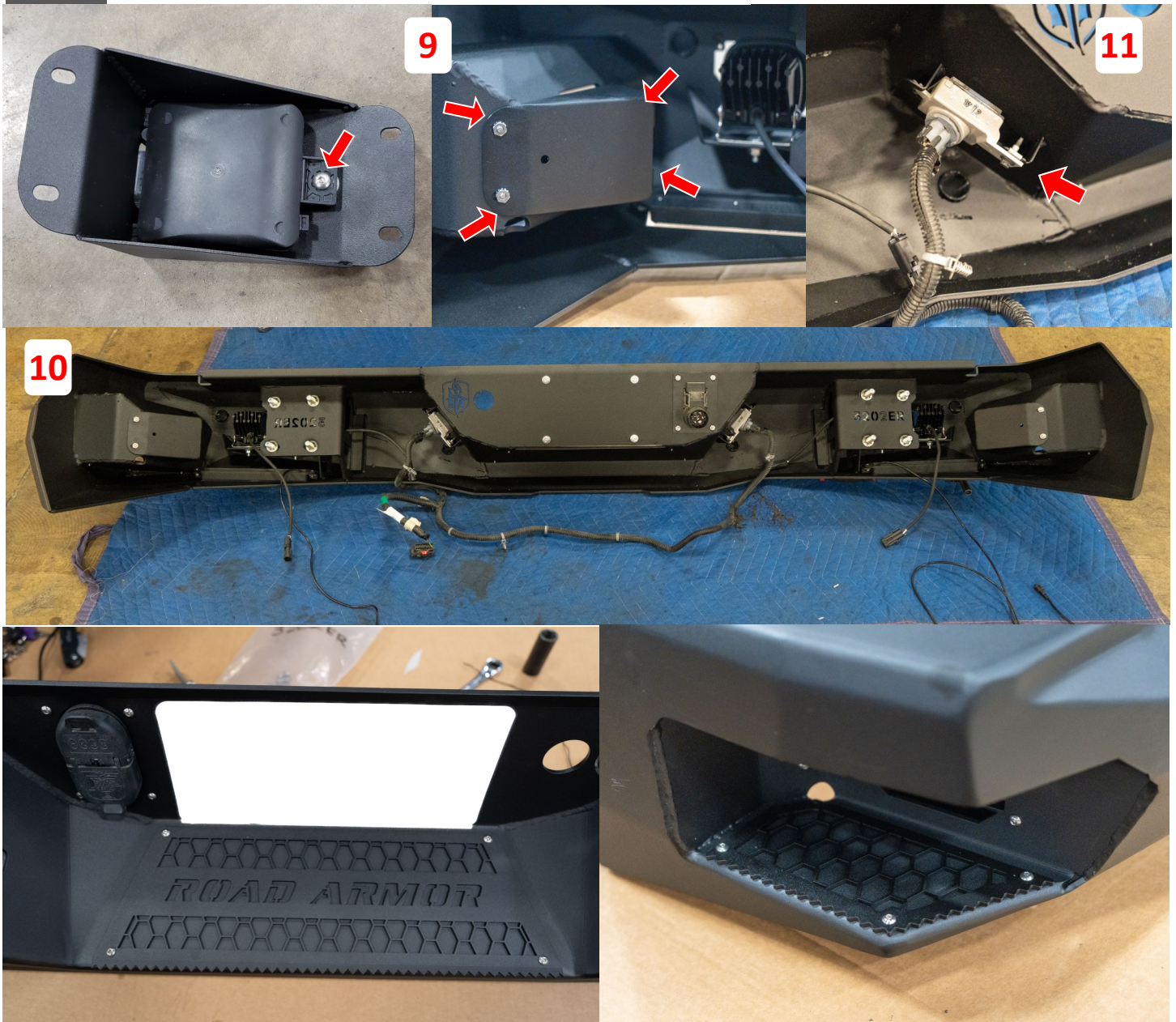
- 1 Unplug all wire harnesses including sensor, keyless entry, trailer plug and camera.
- 2 Remove the two bolts from behind the license plate using 13mm socket wrench.
- 3 Remove the 2 bolts on the backside of each bumper corner using 18mm socket wrench.
- 4 Remove the outside support bracket bolt, on the driver and passenger sides of the bumper using 15mm socket wrench. Continue removing bracket by 21mm socket wrench to remove nut.
- 5 Remove rear bumper.
- 6 Disassemble rear internal bumper brackets followed by removing blindspot and back-up sensors, etc... from rear bumper



NOTE To remove the four sensors: Carefully spread the housing clips and push the sensor out of the housing. With the sensor removed, press the tabs in and push the housing out of the bumper .

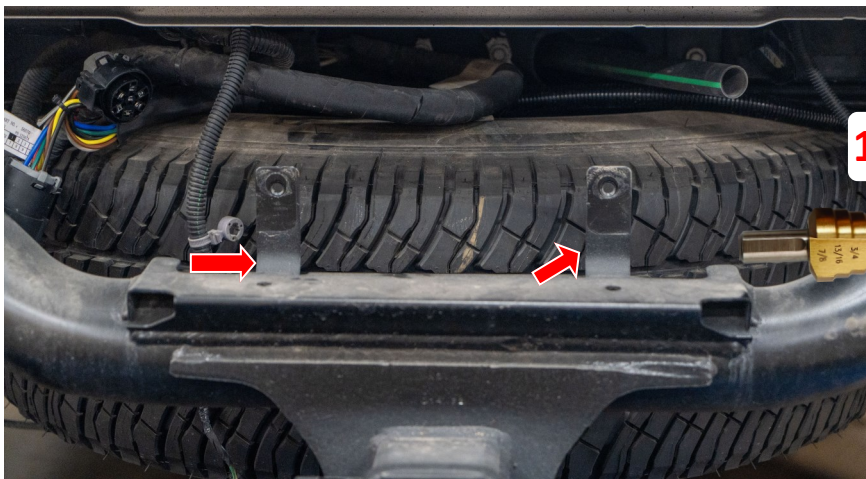
- 7 Remove the 21mm bolts from the bottom of the frame.
- 8 Reinstall the keyless entry sensor to the License Plate Hardware on the Road Armor Bumper using zip ties. The sensors can now be plugged in.

- 9** If equipped, using #10 hardware place blind-spot sensor into sensor bracket and install into each side of bumper corner pods using #10 hardware as shown below.
- 10** Install all parking sensors and harnesses into bumper as they were on the OEM bumper.
- 11** Install the factory threaded clip from your OEM plate light into your new Evolution bumper and insert your OEM plate light into the retaining bracket. Use the factory screw to secure it.
- 12** Install all bolt tabs using retainer washers. 2" bolt tabs are used on the inside slots and 1.5" bolt tabs are used on the outside slots.
- 13** Install Step Plates, License Plate, and Hitch plate using #10 hardware provided.
- 14** Install all accessories at this time. (Accent Lights and Cubes)



- 15** Drill out rear hitch bumper support brackets to 9/16" to match the support brackets. Install support bracket using 1—1/2" x 4 1/2" bolt, washers & nut as well as OEM hitch bolt and nut. Cut off support brackets on Hitch.
- 16** Install bumper onto hitch and support brackets, align and secure bumper using 1/2" hardware.
- 17** Reconnect all harnesses and ensure proper operations of sensors and lighting.

NOTE: DVR Side Hitch Tube May Need 1/4" Material Removed From End Of Hitch Tube To Provide Clearance For Support Bracket To Sit Flush On Mounting Bracket.



FINISHED

