



INSTALL INSTRUCTIONS

Brush Guard

Product : 3202-BRSH

Application : 2020-23, 2024-26 Chevrolet
2500/3500

I WARNING

Read the instructions completely before beginning installation. Before tightening bolts, drilling or cutting where required, check to make sure there are no obstructions such as brake, fuel or electrical lines which may be damaged. Also keep in mind this is an after-market product and MAY require minor shimming and/or trimming, reaming, etc. for proper fit. Road Armor is not responsible for any damages to vehicle.

i IMPORTANT NOTICE

- Be sure to inspect and test fit your product to ensure proper fitment before having it coated, painted, bed lined, etc.
- Road Armor will not be responsible for the cost of coating your unit if any problems with fit or finish are not addressed beforehand.

SAFETY FIRST!

- FOLLOW ALL INSTRUCTIONS, YOUR SAFETY AND THE SAFETY OF OTHERS IS MOST IMPORTANT.
- WEAR APPROPRIATE EYE PROTECTION AND EXERCISE CAUTION WHEN DRILLING / CUTTING

REQUIRED TOOLS

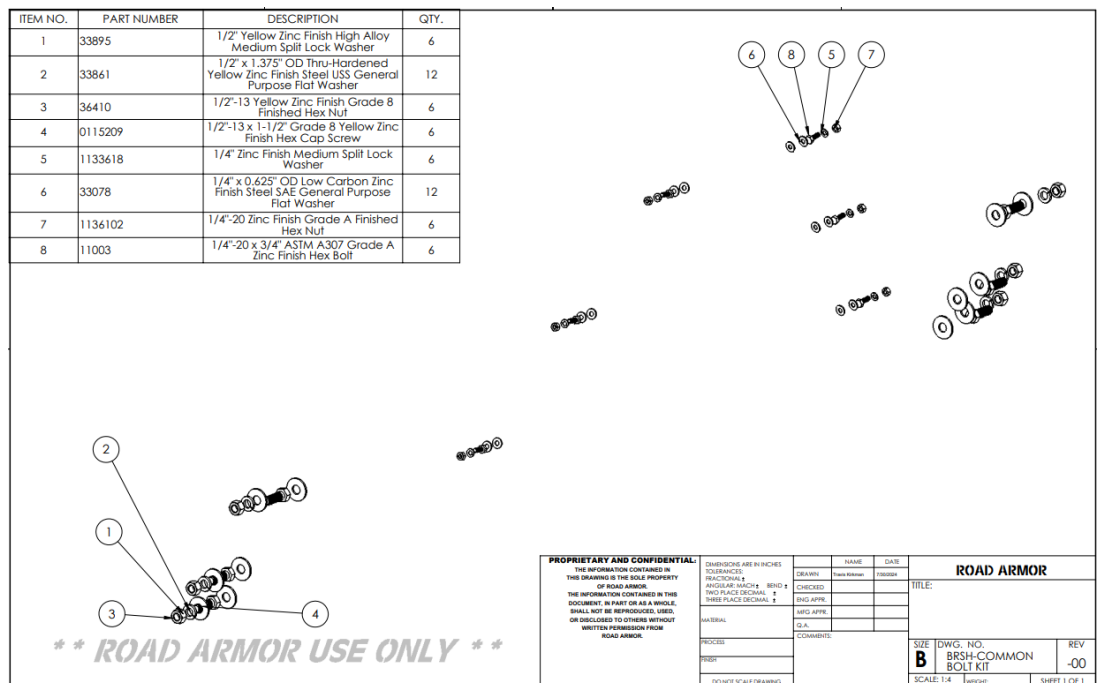
SAE & METRIC Socket set and wrenches
Screw drivers, pry tool, pick tool, pliers

RECOMMENDED TOOLS

Adjustable Table Cart / Table/Pallet Lift or Hoist
Impact driver

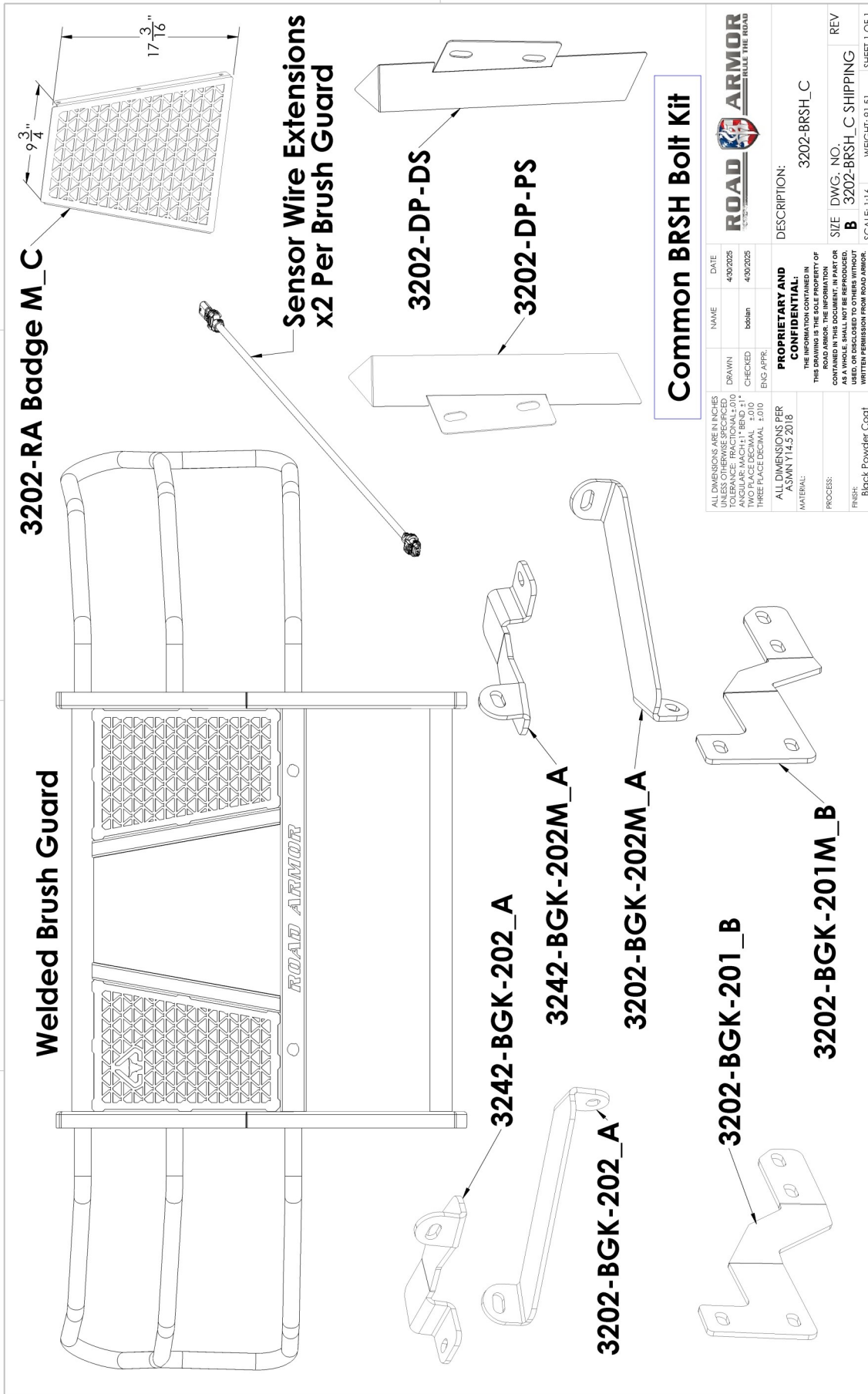
INCLUDED HARDWARE

| ITEM NO. | PART NUMBER | DESCRIPTION | QTY. |
|----------|-------------|---|------|
| 1 | 33895 | 1/2" Yellow Zinc Finish High Alloy Medium Split Lock Washer | 6 |
| 2 | 33861 | 1/2" x 1.375" OD Thru-Hardened Yellow Zinc Finish Steel USS General Purpose Flat Washer | 12 |
| 3 | 36410 | 1/2"-13 Yellow Zinc Finish Grade 8 Finished Hex Nut | 6 |
| 4 | 0115209 | 1/2"-13 x 1-1/2" Grade 8 Yellow Zinc Finish Hex Cap Screw | 6 |
| 5 | 1133618 | 1/4" Zinc Finish Medium Split Lock Washer | 6 |
| 6 | 33078 | 1/4" x 0.625" OD Low Carbon Zinc Finish Steel SAE General Purpose Flat Washer | 12 |
| 7 | 1136102 | 1/4"-20 Zinc Finish Grade A Finished Hex Nut | 6 |
| 8 | 11003 | 1/4"-20 x 3/4" ASTM A307 Grade A Zinc Finish Hex Bolt | 6 |



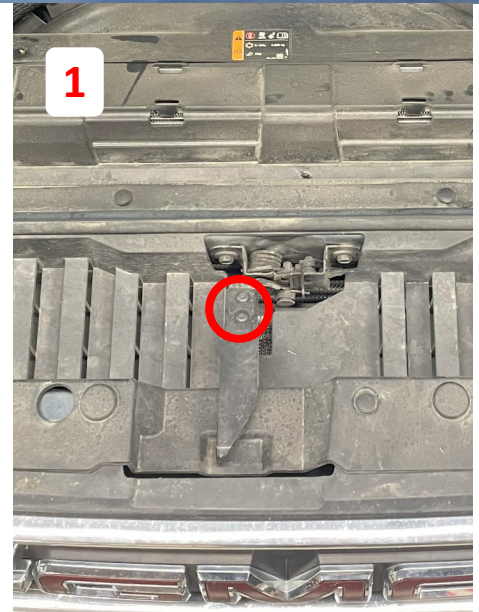
**** ROAD ARMOR USE ONLY ****

| | | | | |
|---|----------------------|---|---|--|
| PROPRIETARY AND CONFIDENTIAL THE INFORMATION CONTAINED IN THIS DRAWING IS THE SOLE PROPERTY OF ROAD ARMOR. THE INFORMATION CONTAINED IN THIS DOCUMENT, IN PART OR AS A WHOLE, SHALL NOT BE REPRODUCED, USED, OR DISCLOSED TO OTHERS WITHOUT WRITTEN PERMISSION FROM ROAD ARMOR. | | DIMENSIONS ARE IN INCHES UNLESS OTHERWISE SPECIFIED. ANGULAR MATCHES: BEND 1 SURFACE DECIMAL: 4 THREE PLACE DECIMAL: 4 | NAME: _____ DATE: _____ DRAWN: _____ CHECKED: _____ ENG. APPR.: _____ MFG. APPR.: _____ D.A.: _____ COMMENTS: _____ | TITLE: ROAD ARMOR SIZE: B DWG. NO.: BRSH-COMMON BOLT KIT SCALE: 1:4 WEIGHT: _____ SHEET 1 OF 1 |
| REVISIONS: REVISION: _____ DATE: _____ | DO NOT SCALE DRAWING | | | |

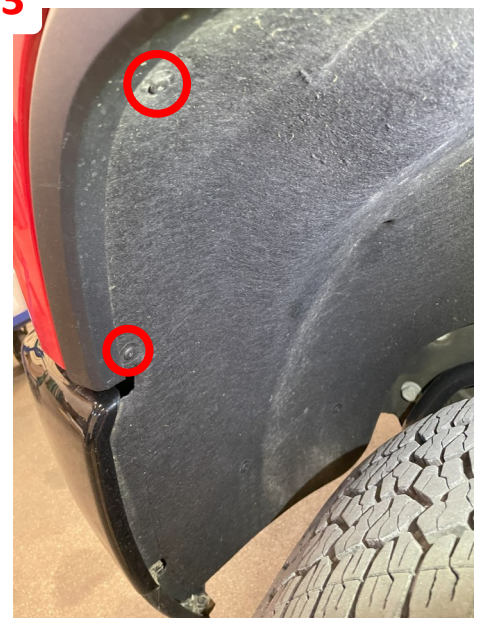
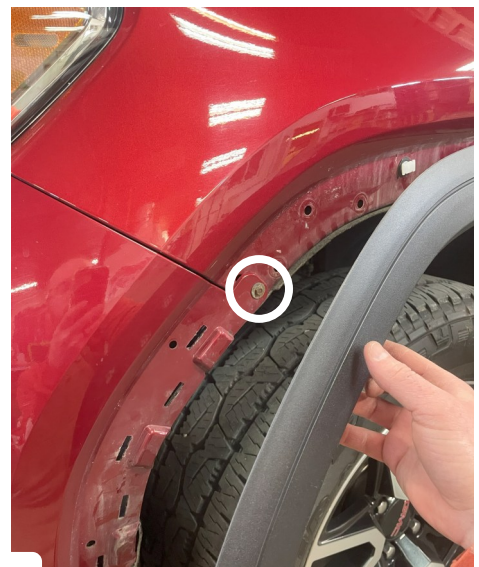


| | | | |
|---|---|-----------|---------------|
| ALL DIMENSIONS ARE IN INCHES UNLESS OTHERWISE SPECIFIED | NAME | DATE | DESCRIPTION: |
| ANGULAR: MACH 1° BEND 21° | DRAWN | 4/30/2025 | 3202-BRSH_L_C |
| TWO PLACE DECIMAL ±0.10 | CHECKED | 4/30/2025 | |
| THREE PLACE DECIMAL ±0.10 | ENG. APPR. | | |
| ALL DIMENSIONS PER ASMN Y14.5 2018 | PROPRIETARY AND CONFIDENTIAL | | |
| MATERIAL: | THE INFORMATION CONTAINED IN THIS DRAWING IS THE SOLE PROPERTY OF ROAD ARMOR. THE INFORMATION CONTAINED IN THIS DOCUMENT IS PART OR WHOLE THEREOF AND IS NOT TO BE REPRODUCED, COPIED, USED, OR DISCLOSED TO OTHERS WITHOUT WRITTEN PERMISSION FROM ROAD ARMOR. | | |
| PROCESS: | SIZE DWG. NO. REV | | |
| FINISH: | B 3202-BRSH_L_C SHIPPING | | |
| Black Powder Coat | SCALE: 1:16 WEIGHT: 91.51 SHEET 1 OF 1 | | |

- 1 Remove Hood Latch.
- 2 Remove Cover on Top of Grille.



- 3 Remove the Front Fascia. Remove the Bolts in the Liner and Underneath the Fender.





4 Remove the Grille.

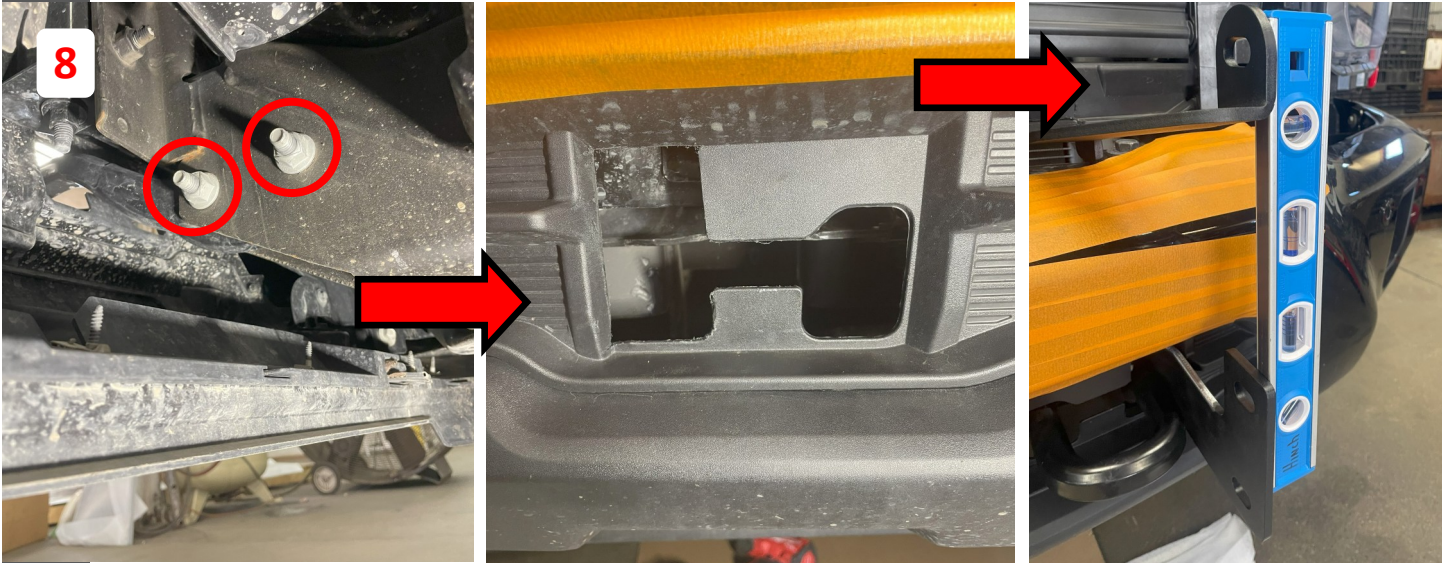
5 Remove the Top Cover on the Bumper and Cut as shown on the Inside of the Hole.

6 To mount the Upper Bracket, part of the Lip of the Shutter System will need to be Trimmed as Shown.

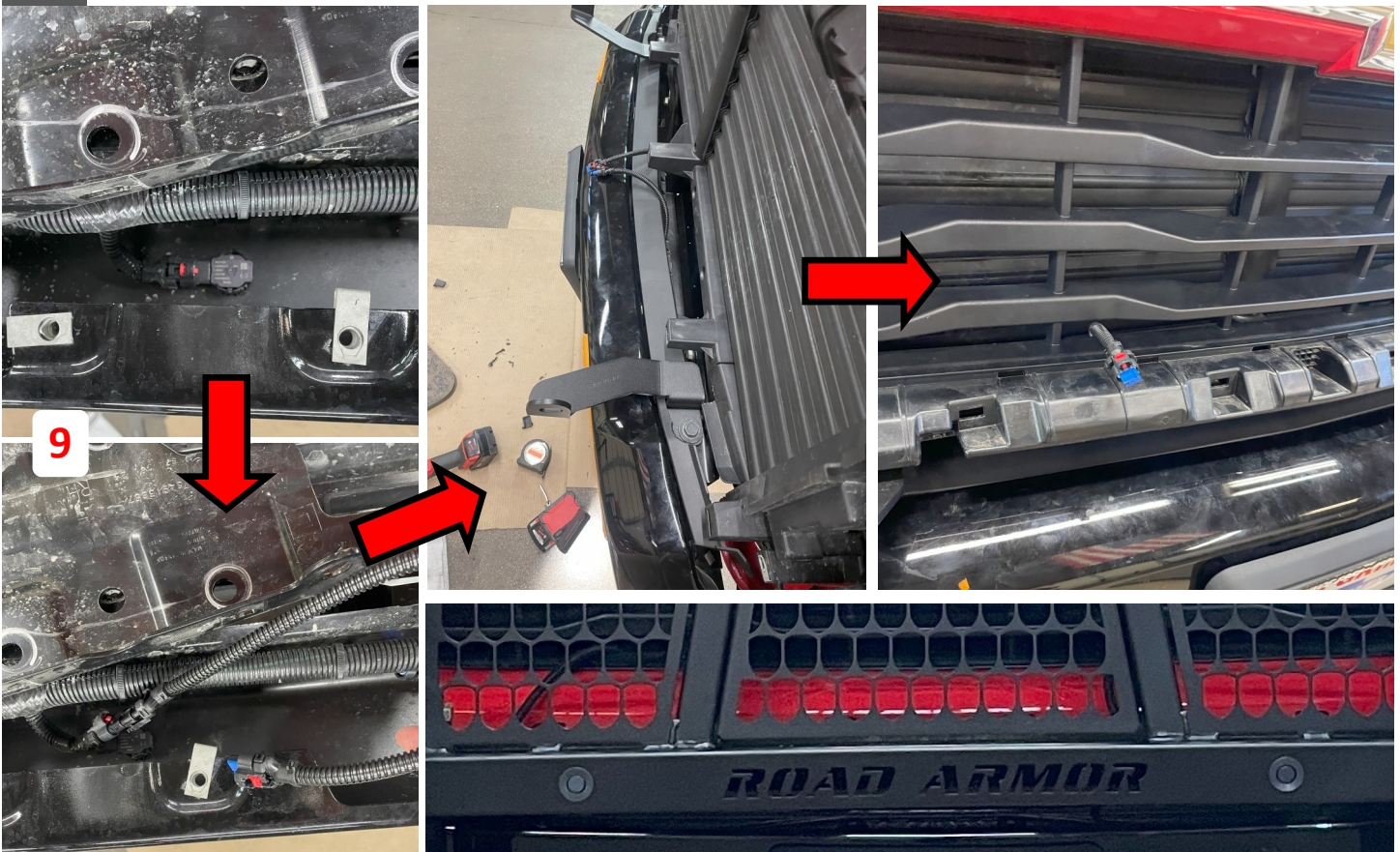


7 Mount Upper Brackets using factory bolts as shown. Reinstall the Top cover for the Bumper.

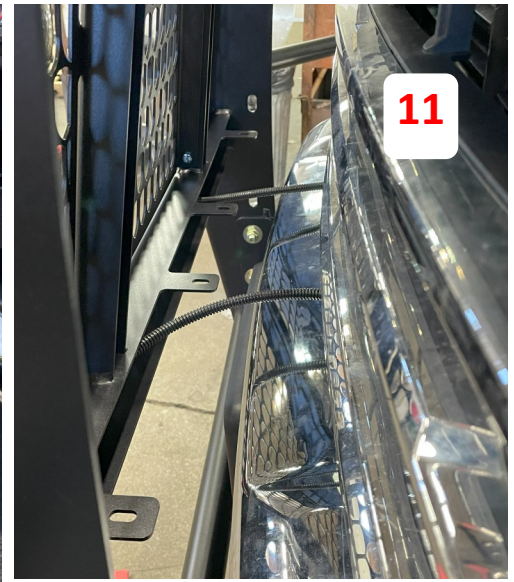
8 Remove Tow Hooks. Trim the Outer portion of the Tow Hook opening as shown (Passenger Side Shown). Reinstall Tow Hooks with Lower Bracket Mounted to the Outside of the Frame.



9 Remove the 2 Center Sensors and their Housings. Transfer to the Road Armor Brush Guard. Connect provided Wire Extensions. Reinstall Grille.



- 10** Mount Brush Guard with the Brackets on the Inside. If Sensors are equipped, mount the Sensor Deflector on the Outside of the Upright as shown.
- 11** Plug Sensor Extensions into the Sensors that were moved to the Center Crossbar. Center Mesh can be Removed for better camera view.



Finished

