

INSTALL INSTRUCTIONS

Brush Guard

Product : 3191-BRSH

Application : 2019-21 Chevrolet 1500

I WARNING

Read the instructions completely before beginning installation. Before tightening bolts, drilling or cutting where required, check to make sure there are no obstructions such as brake, fuel or electrical lines which may be damaged. Also keep in mind this is an after-market product and MAY require minor shimming and/or trimming, reaming, etc. for proper fit. Road Armor is not responsible for any damages to vehicle.

i IMPORTANT NOTICE

- Be sure to inspect and test fit your product to ensure proper fitment before having it coated, painted, bed lined, etc.
- Road Armor will not be responsible for the cost of coating your unit if any problems with fit or finish are not addressed beforehand.

SAFETY FIRST!

- FOLLOW ALL INSTRUCTIONS, YOUR SAFETY AND THE SAFETY OF OTHERS IS MOST IMPORTANT.
- WEAR APPROPRIATE EYE PROTECTION AND EXERCISE CAUTION WHEN DRILLING / CUTTING

REQUIRED TOOLS

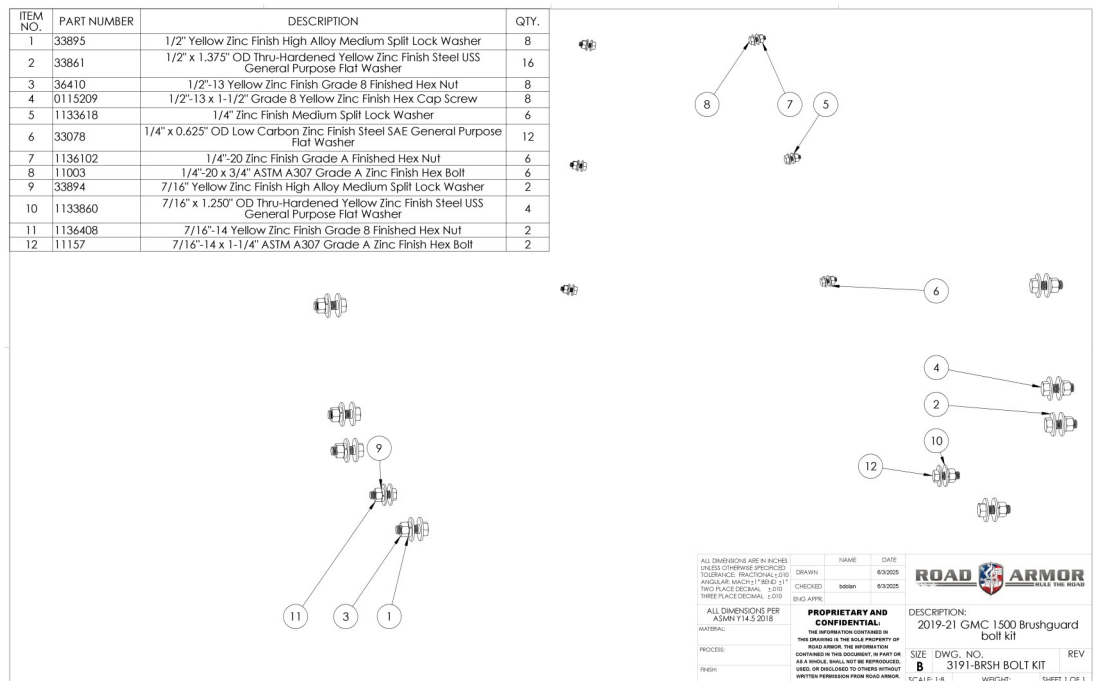
SAE & METRIC Socket set and wrenches
Screw drivers, pry tool, pick tool, pliers

RECOMMENDED TOOLS

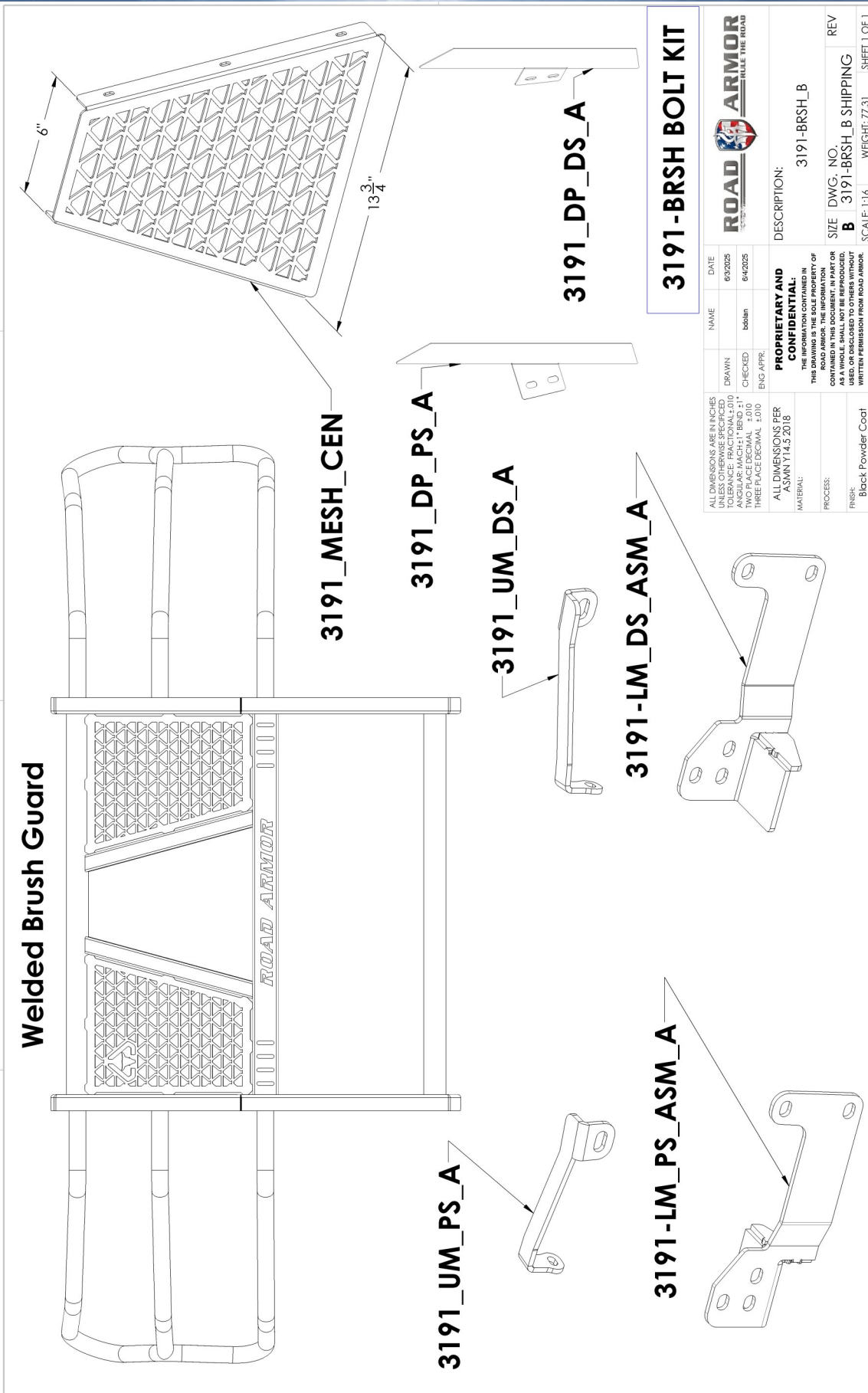
Adjustable Table Cart / Table/Pallet Lift or Hoist
Impact driver

INCLUDED HARDWARE

ITEM NO.	PART NUMBER	DESCRIPTION	QTY.
1	33895	1/2" Yellow Zinc Finish High Alloy Medium Spill Lock Washer	8
2	33861	1/2" x 1.375" OD Thru-Hardened Yellow Zinc Finish Steel USS General Purpose Flat Washer	16
3	36410	1/2"-13 Yellow Zinc Finish Grade 8 Finished Hex Nut	8
4	0115209	1/2"-13 x 1-1/2" Grade 8 Yellow Zinc Finish Hex Cap Screw	8
5	1133618	1/4" Zinc Finish Medium Spill Lock Washer	6
6	33078	1/4" x 0.625" OD Low Carbon Zinc Finish Steel SAE General Purpose Flat Washer	12
7	1136102	1/4"-20 Zinc Finish Grade A Finished Hex Nut	6
8	11003	1/4"-20 x 3/4" ASTM A307 Grade A Zinc Finish Hex Bolt	6
9	33894	7/16" Yellow Zinc Finish High Alloy Medium Spill Lock Washer	2
10	1133860	7/16" x 1.250" OD Thru-Hardened Yellow Zinc Finish Steel USS General Purpose Flat Washer	4
11	1136408	7/16"-14 Yellow Zinc Finish Grade 8 Finished Hex Nut	2
12	11157	7/16"-14 x 1-1/4" ASTM A307 Grade A Zinc Finish Hex Bolt	2



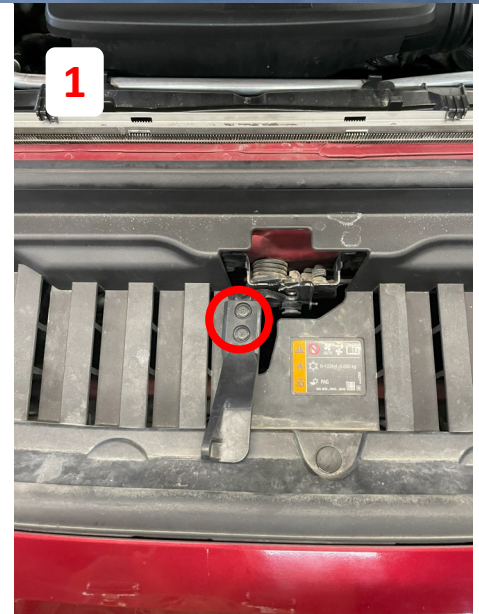
ALL DIMENSIONS ARE IN INCHES UNLESS OTHERWISE SPECIFIED	TOLERANCE: FRACTIONAL SIZE	ANGULAR: MACH 1° 8' 0" 1"	THIRD ANGLE ISOMETRIC: 2010	THIRD ANGLE ISOMETRIC: 2010	DATE: 03/20/25	NAME: [blank]	
PROCESS: [blank]	FINISH: [blank]	ALL DIMENSIONS PER ASMN Y14.3 2018	PROPRIETARY AND CONFIDENTIAL	DESCRIPTION: 2019-21 GMC 1500 Brushguard bolt kit	SIZE: DWG. NO. B 3191-BRSH BOLT KIT	REV: [blank]	
MATERIAL: [blank]			THE INFORMATION CONTAINED IN THIS DOCUMENT IS THE SOLE PROPERTY OF ROAD ARMOR. THE INFORMATION CONTAINED IN THIS DOCUMENT IS FOR USE AS A SINGLE UNIT AND NOT BE REPRODUCED, COPIED, OR DISCLOSED TO OTHERS WITHOUT WRITTEN PERMISSION FROM ROAD ARMOR.		SCALE: 1:8	WEIGHT: [blank]	SHEET 1 OF 1



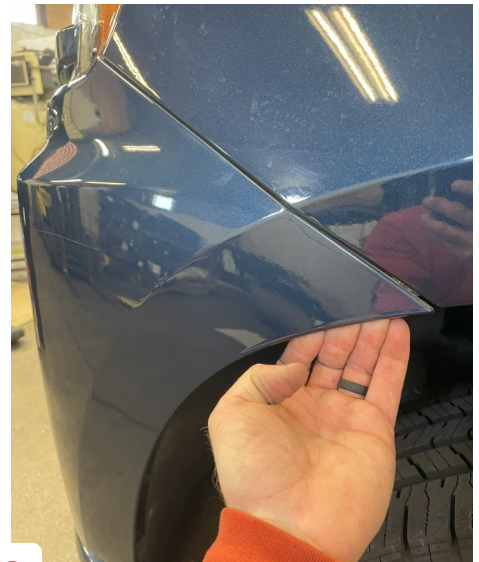
NAME	DATE	DESCRIPTION
3191-BRSH_BOLT_KIT	6/3/2025	3191-BRSH_B
3191-BRSH_B	6/4/2025	3191-BRSH_B SHIPPING

ALL DIMENSIONS ARE IN INCHES UNLESS OTHERWISE SPECIFIED. DIMENSIONS IN PARENTHESES ARE ANGULAR MATCH-BEND ±1° TWO PLACE DECIMAL ±.010 THREE PLACE DECIMAL ±.010	PROPRIETARY AND CONFIDENTIAL: THIS DRAWING IS THE SOLE PROPERTY OF ROAD ARMOR. THE INFORMATION CONTAINED IN THIS DOCUMENT, IN PART OR AS A WHOLE, SHALL NOT BE REPRODUCED, COPIED, OR TRANSMITTED IN ANY FORM OR BY ANY MEANS WITHOUT THE WRITTEN PERMISSION FROM ROAD ARMOR.
ALL DIMENSIONS PER ASMN Y14.5 2018	MATERIAL: PROCESS: FINISH: Black Powder Coat
SCALE: 1:1.6	WEIGHT: 77.31
REV B	3191-BRSH_B SHIPPING
SHEET 1 OF 1	

- 1 Remove Hood Latch.
- 2 Remove Cover on Top of Grille.



- 3 Remove the Front Fascia. Remove the Bolts in the Liner.





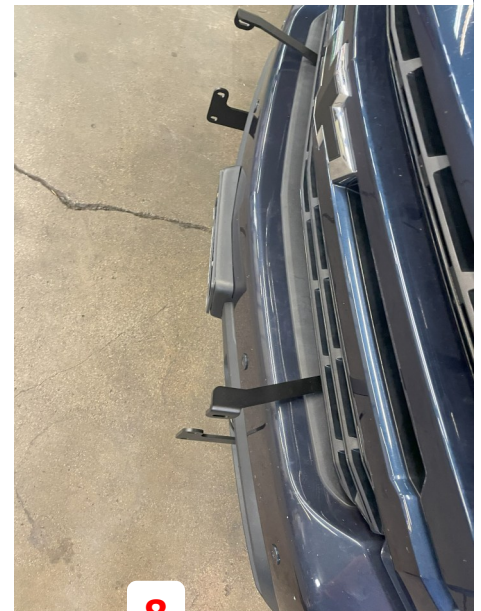
- 4 Remove the Grille.**
- 5 With the Grille Removed, Remove the Shutter System.**
- 6 Remove Tow Hooks. Cut the Tow Hook Opening as Shown.**



- 7 Insert Lower Mounting Bracket through opened tow hook cut out. Reinstall Tow Hooks with Bracket using OEM hardware and provided Bolt as shown.**



7 Mount the Upper Bracket as Shown.



8 Reinstall Grille and Fascia.

**9 Install Road Armor Brush Guard.
Install Deflector Plates as shown on
the Outside of the Brush Guard
Uprights.**



Finished

