



INSTALL INSTRUCTIONS

STEALTH FRONT BUMPER

Product Range : 315RXB

Application : 2015-2019 CHEVY 2500HD, 3500HD

I WARNING

Read the instructions completely before beginning installation. Before tightening bolts, drilling or cutting where required, check to make sure there are no obstructions such as brake, fuel or electrical lines which may be damaged. Also keep in mind this is an after-market product and MAY require minor shimming and/or trimming, reaming, etc. for proper fit. Road Armor is not responsible for any damages to vehicle.

ⓘ IMPORTANT NOTICE

- Be sure to inspect and test fit your product to ensure proper fitment before having it coated, painted, bed lined, etc.
- Road Armor will not be responsible for the cost of coating your unit if any problems with fit or finish are not

SAFETY FIRST!

- FOLLOW ALL INSTRUCTIONS, YOUR SAFETY AND THE SAFETY OF OTHERS IS MOST IMPORTANT.
- WEAR APPROPRIATE EYE PROTECTION AND EXERCISE CAUTION WHEN DRILLING / CUTTING

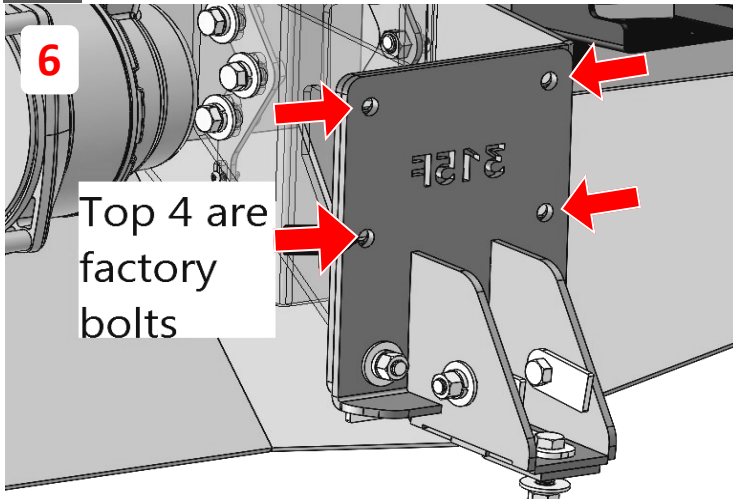
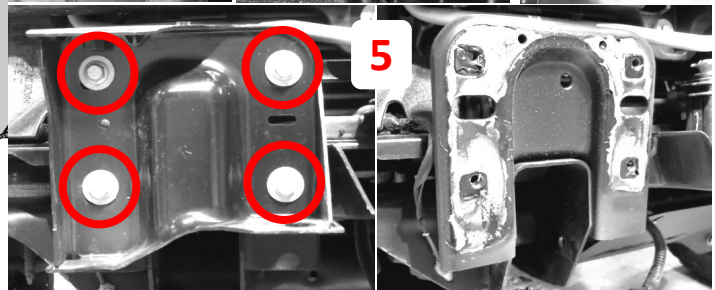
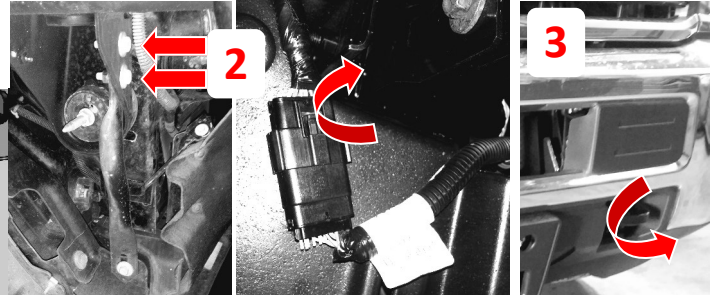
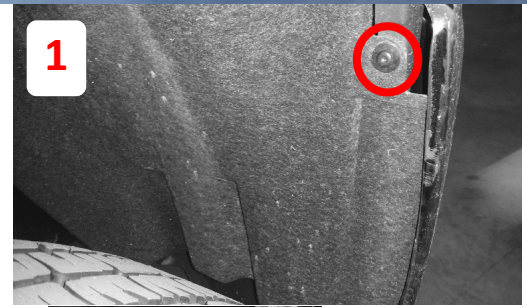
REQUIRED TOOLS

SAE & Metric Sockets and Wrenches Black Spray Paint
Drill and 1/2 – 9/16 or Step bit Tape Measure
Allen wrenches

INCLUDED HARDWARE

- 4 7/16"-14 x 1-1/4" Steel Socket Cap Screw
- 4 3/8"-16 x 1-1/4 Steel Socket Cap Screw
- 12 #10-24 x 3/4" Stainless Steel Button Socket Cap Screw
- 12 #10-24 External Tooth Lock Washer K-Lock Nut
- 10 1/2"-13 Grade 8 Hex Nut
- 22 1/2" Split Lock Washer
- 22 1/2" Flat Washer
- 12 1/2"-13 x 1 1/2" Grade 8 Hex Cap Screw
- 10 1.5" SINGLE BOLT TAB (ZINC)
- 4 1.093 Dome Plug
- 4 1/2" Triple Nut Plate
- 1 RA Logo Plate

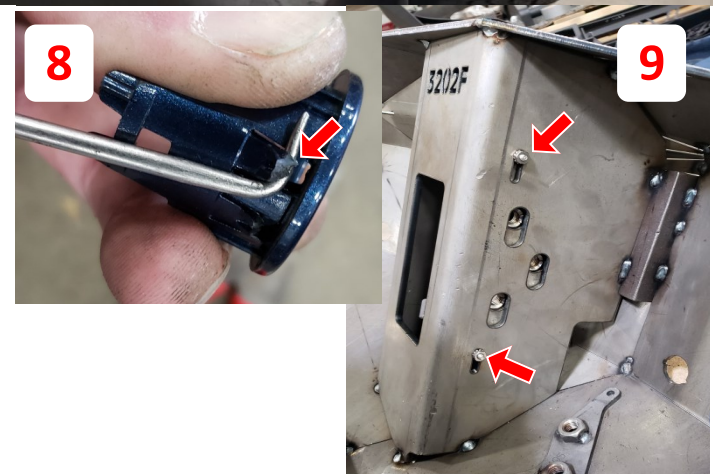
- 1 Remove screws holding inner fender well to bumper
- 2 Remove bumper stiffeners both sides and unplug harness
- 3 Remove tow hooks both sides
- 4 Remove bumper bolts 4 total and pull off bumper
- 5 Remove OEM bumper brackets and paint the raw metal revealed
- 6 Bolt on the brackets using bolt tabs starting with the inside bottom bolt. Do not tighten yet.



- 7 Loosely install kit frame brackets using Qty: 4 – FACTORY (OEM) 10mm Bolts through the front of each frame bracket. Continue by using Qty: 4 – 1/2" Bolt Tabs, Nuts, Lock Washers and Washers through kit bracket and lower frame where OEM tow hooks attached & 2 through each frame horn. ***Open Holes - 1/2" If Needed***



- 8 Install all sensor into Stealth bumper as were in factory bumper. Trim 1/16" off sensor housing for proper fit. Zip tie can be used on back side to secure each sensor assembly to bumper.
- 9 Loosely install 4 - 1/2" Triple nut plates into bumper using #10 hardware supplied **(*DO NOT TIGHTEN*)**



NOTE *MUST* Install RA Logo, Winch and ALL Lighting prior to installing bumper onto truck.

- 10 Measure distance from inside to inside of "Weld-in" bracket on bumper and transfer measurement to frame brackets. Once adjusted and centered to proper distance tighten all hardware on frame brackets.
- 11 Install bumper assembly using 6 – ½" bolts, lock washers and washers at each frame end. Align bumper and be sure to leave approximately 3/8" gap between headlamp and bumper. (Doing so will prevent damage to fascia and bumper.) Once bumper is aligned; tighten all remaining bumper bracket hardware.
- 12 Plug all disconnected harnesses and reinstall factory grille and fascia in reverse order.
- 13 Trim inner fender liner to fit profile of Stealth bumper.



***MINIMUM 3/8" + Gap Required; DO NOT Install
Directly Against Front Fascia***

- Install the winch to the bumper using the supplied Allen Bolts and Washers.



Note - Install the Flairlead bolts before you mount the winch.

