

INSTALL INSTRUCTIONS

IDENTITY REAR BUMPER

Product : 3152DR

Application : 2015 — 2018 Chevy/ GMC 1500, 2500, 3500

(THIS APPLIES TO ALL IDENTITY SERIES REAR BUMPERS)

I WARNING

Read the instructions completely before beginning installation. Before tightening bolts, drilling or cutting where required, check to make sure there are no obstructions such as brake, fuel or electrical lines which may be damaged. Also keep in mind this is an after-market product and MAY require minor shimming and/or trimming, reaming, etc. for proper fit. Road Armor is not responsible for any damages to vehicle.

❗ IMPORTANT NOTICE

- Be sure to inspect and test fit your product to ensure proper fitment before having it coated, painted, bed lined, etc.
- Road Armor will not be responsible for the cost of coating your unit if any problems with fit or finish are not noted and addressed beforehand.

SAFETY FIRST!

- FOLLOW ALL INSTRUCTIONS, YOUR SAFETY AND THE SAFETY OF OTHERS IS MOST IMPORTANT.
- WEAR APPROPRIATE EYE PROTECTION AND EXERCISE CAUTION WHEN DRILLING / CUTTING

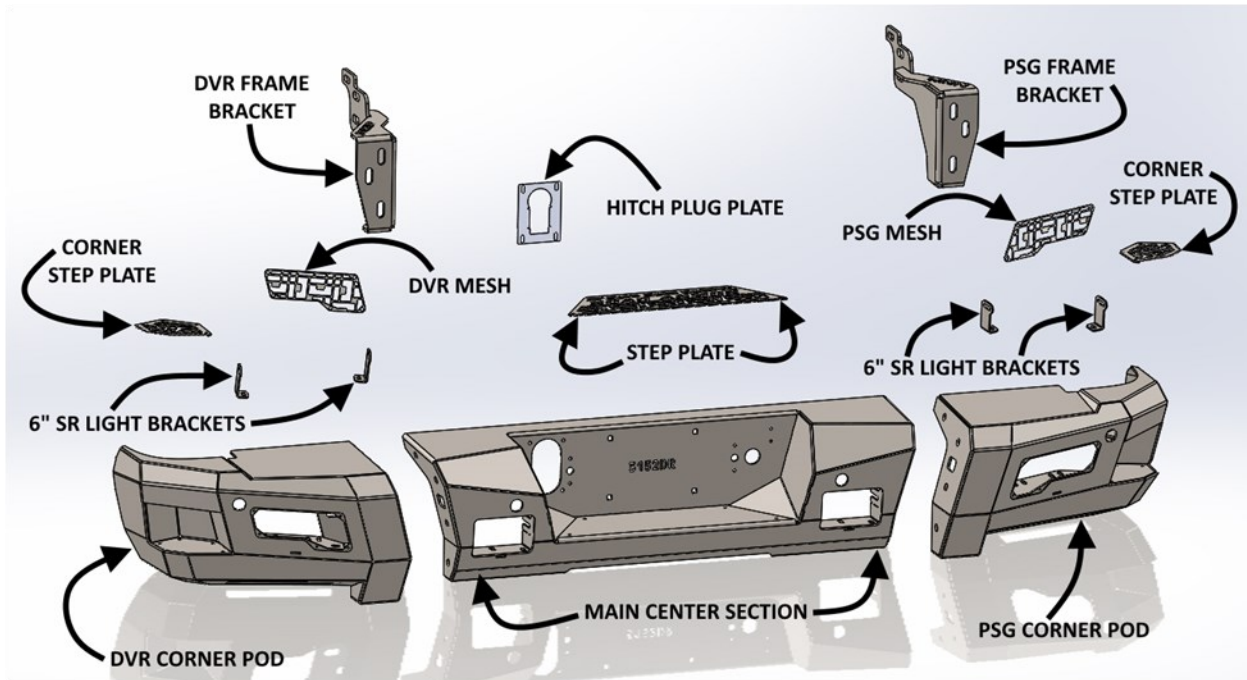
REQUIRED TOOLS

SAE & Metric Sockets and Wrenches
 Drill and 1/2 – 9/16 or Step bit
 Allen wrenches

Black Spray Paint
 Tape Measure

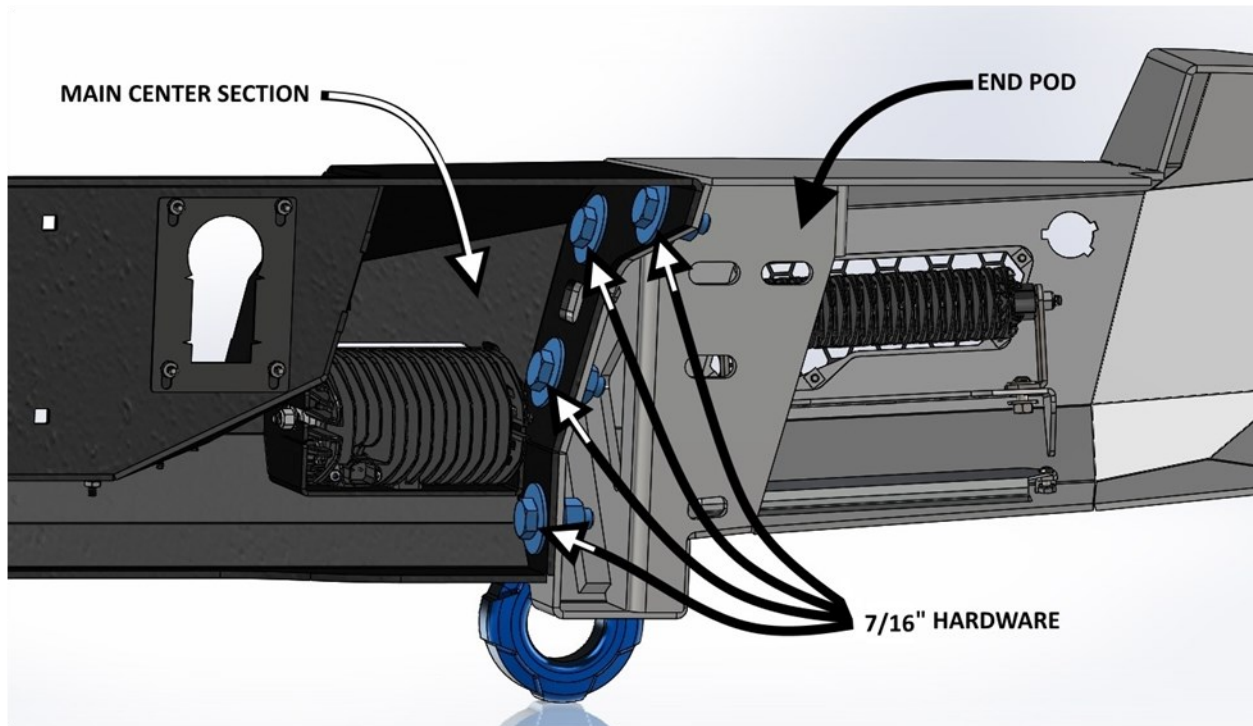
INCLUDED HARDWARE

4	1/4" License Plate Screws	16	7/16" x 1.250" OD Thru-Hardened Yellow Zinc Finish Steel USS General Purpose Flat Washer
4	1/4" (14) Screw Size License Plate Nut White Nylon		
2	LED License Plate Light (2 Wire)	8	7/16"-14 Zinc Finish Grade 5 Finished Hex Nut
4	#8-32 Zinc Finish Steel with External Tooth Lockwasher K-Lock Nut	8	7/16" Yellow Zinc Finish High Alloy Medium Split Lock Washer
4	#8-32 x 3/4" ASTM F879 Hex Drive Grade 18-8 Stainless Steel Flat Socket Cap Screw	12	1.5" Single Bolt Tab (ZINC)
14	#10-24 x 1/2" ASTM F835 Hex Drive Zinc Finish Alloy Steel Button Socket Cap Screw	12	1/2" x 1.375" OD Thru-Hardened Yellow Zinc Finish Steel USS General Purpose Flat Washer
20	#10-24 Zinc Finish Steel with External Tooth Lockwasher K-Lock Nut	12	1/2" Yellow Zinc Finish High Alloy Medium Split Lock Washer
16	#10-24 x 3/4" ASTM F879 Hex Drive Grade 18-8 Stainless Steel Button Socket Cap Screw	12	1/2"-13 Yellow Zinc Finish Grade 8 Finished Hex Nut
4	1/4"-20 x 3/4" ASTM F835 Hex Drive Zinc Finish Alloy Steel Button Socket Cap Screw	6	1/2" Bolt 15/16" O.D. Zinc Pushnut Bolt Retainer
8	1/4" x 0.734" OD Low Carbon Zinc Finish Steel USS General Purpose	1	RA-SHIELD-RWB REV01
		2	8 INCH ACCENT LIGHTS & MODULE
4	1/4"-20 Zinc Finish Grade A Finished Hex Nut		
8	7/16"-14 x 1-1/2" Grade 5 Zinc Finish Hex Cap Screw		

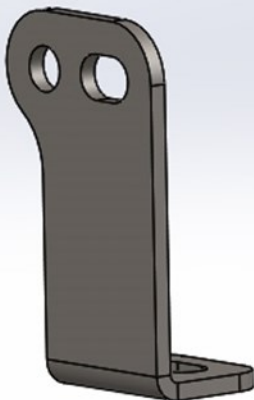


- 1** Unplug the factory sensors.
- 2** Remove the two bolts in the center of the bumper.
- 3** Remove the trailer hitch plug.
- 4** Unbolt the bumper brackets
- 5** The bumper brackets will interfere with the bed. Loosen the bed bolts and remove factory bumper then tighten.

- 6** Assembly each Rear End Pods to Main Center Section using 4 – 7/16" x 1 1/2" Bolts, Nuts, Lock Washers & Washers.
- 7** Install Kit 8" Accent Light into each Kit End Pod using 2 - #10-24 x 1/2" Bolts & Lock Nuts.
- 8** Install Kit 6" Light Bar Brackets onto Kit End Pod Bracket using 2 – 1/4" x 3/4" Hardware supplied.



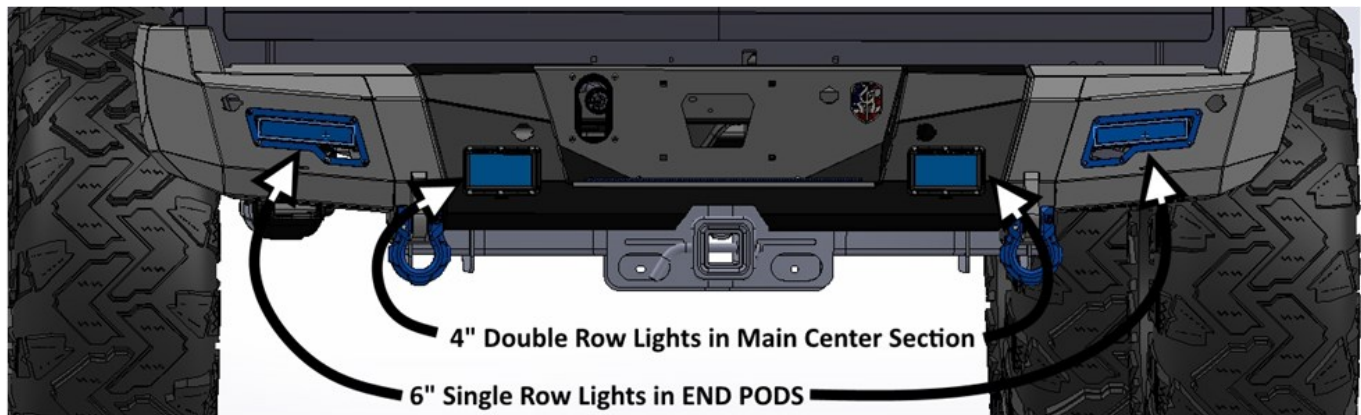
**Left Side
Light Bracket**



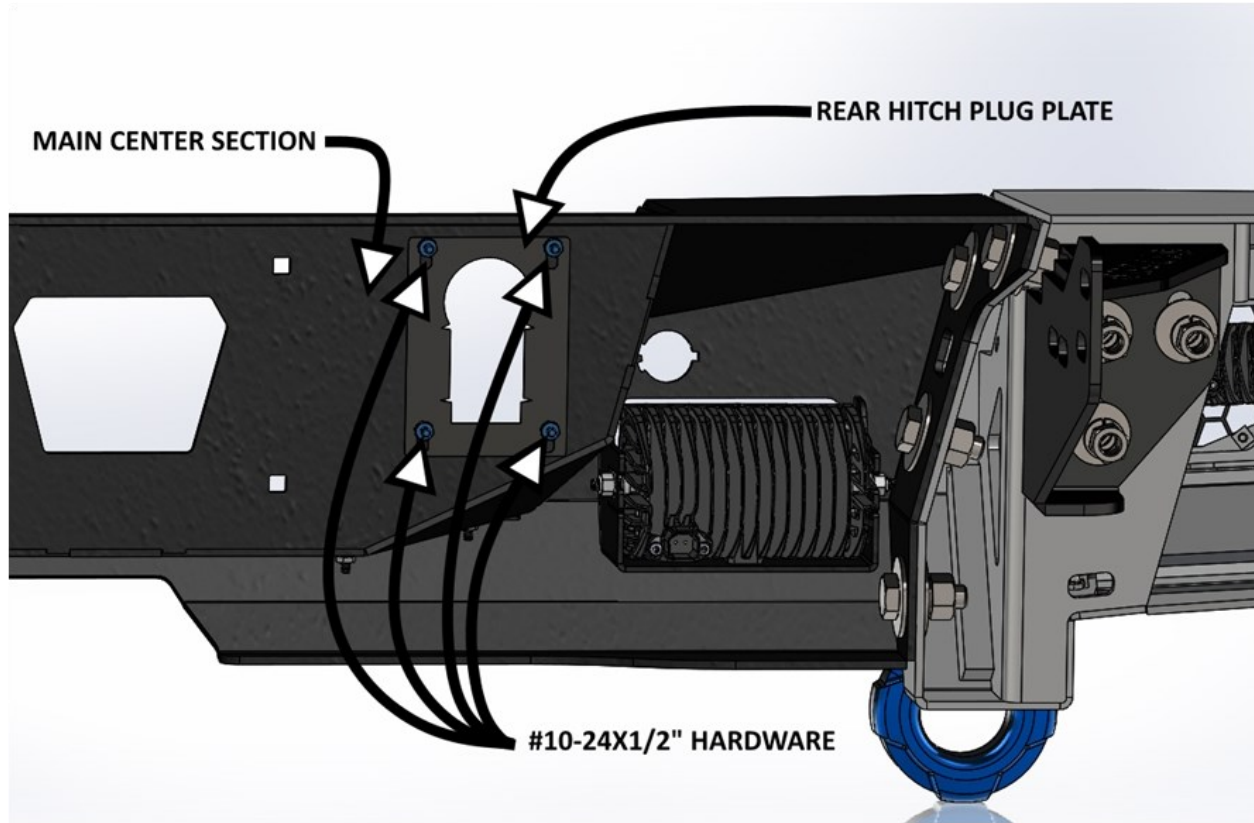
**Right Side
Light Bracket**



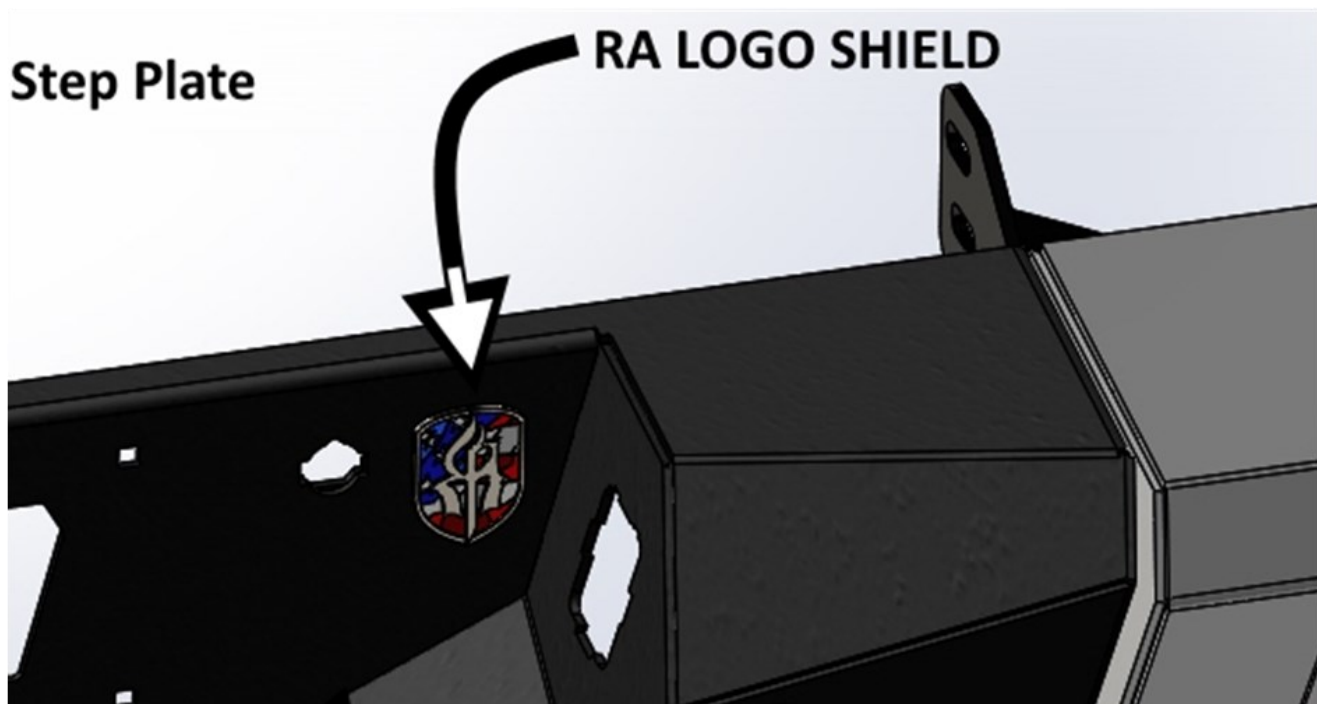
9 Install lights into Main Center Section and End Pods as Shown Below:



- 10** Install Hitch Plug Plate onto back of Main Center Section using 4 - #10-24x1/2" Bolts & Lock Nuts.

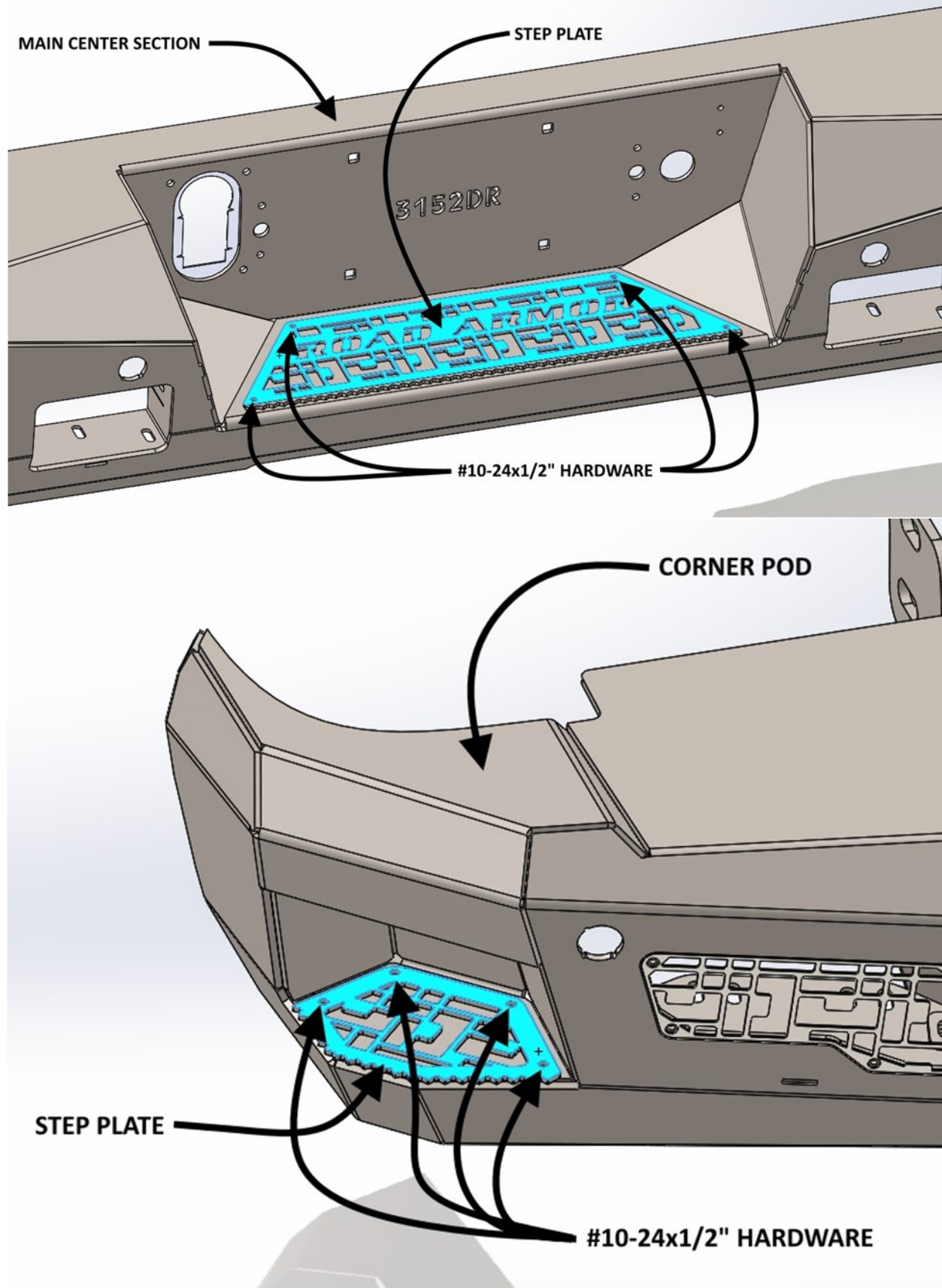


- 11** Install Kit RA LOGO SHIELD onto Main Center Section.

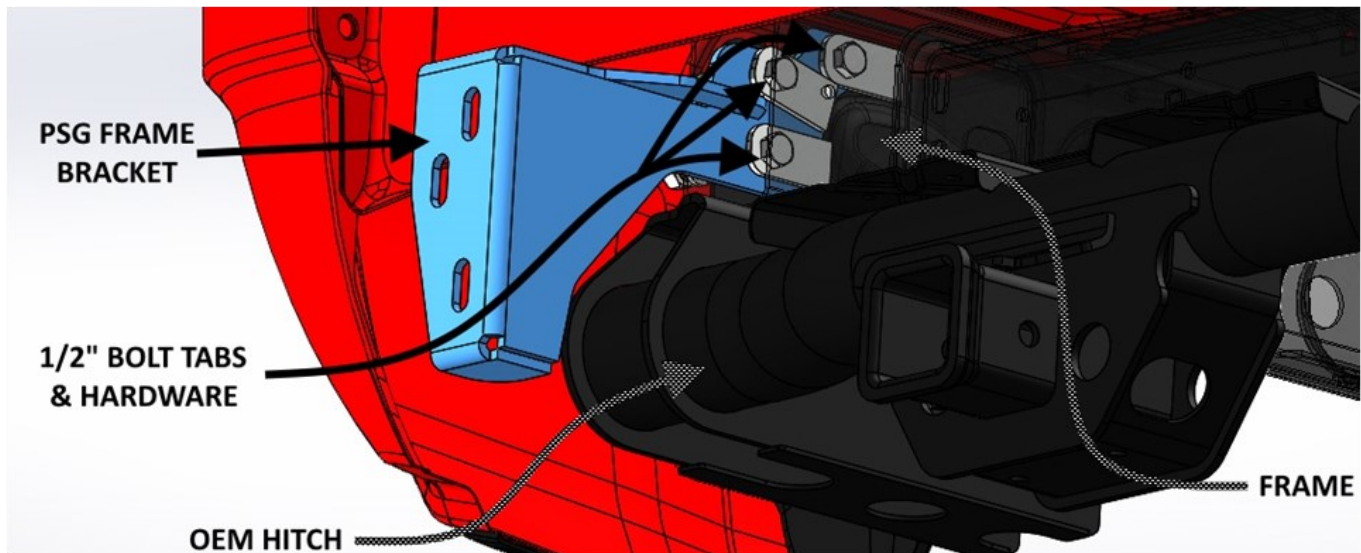


13

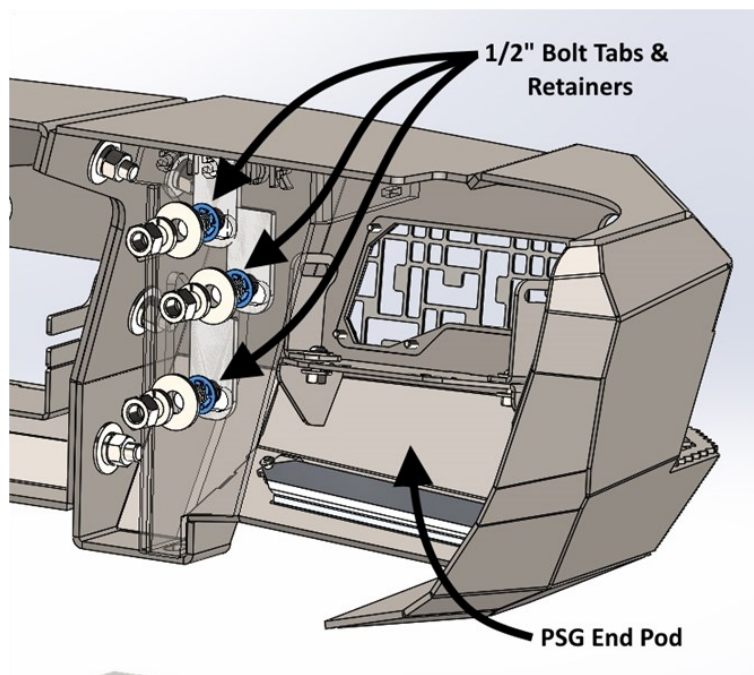
Install EACH Kit Step Plate onto Main Center Section & Corner Pods using 4 - #10-24x1/2" Bolts & Lock Nuts.



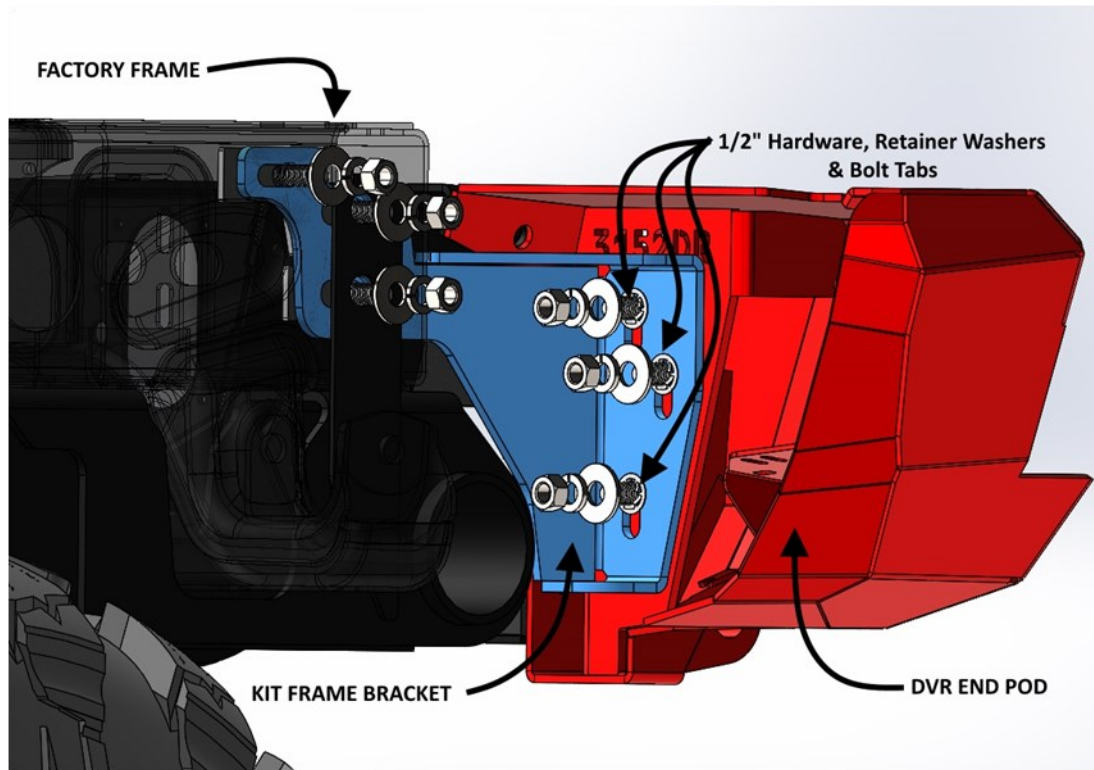
- 14** Install all OE Rear Sensor Housings, Sensors and Harnesses. Secure them to bumper. (Note: One of the outer sensor may need to be extended by 3-4" to increase slack in harness.)
- 15** Using a ½" step bit, drill out top frame hole to accommodate new ½" bolt tab. (Angle drill helps for tight space)
- 16** Install Kit Frame Brackets using kit 3 – ½" Bolt Tabs.



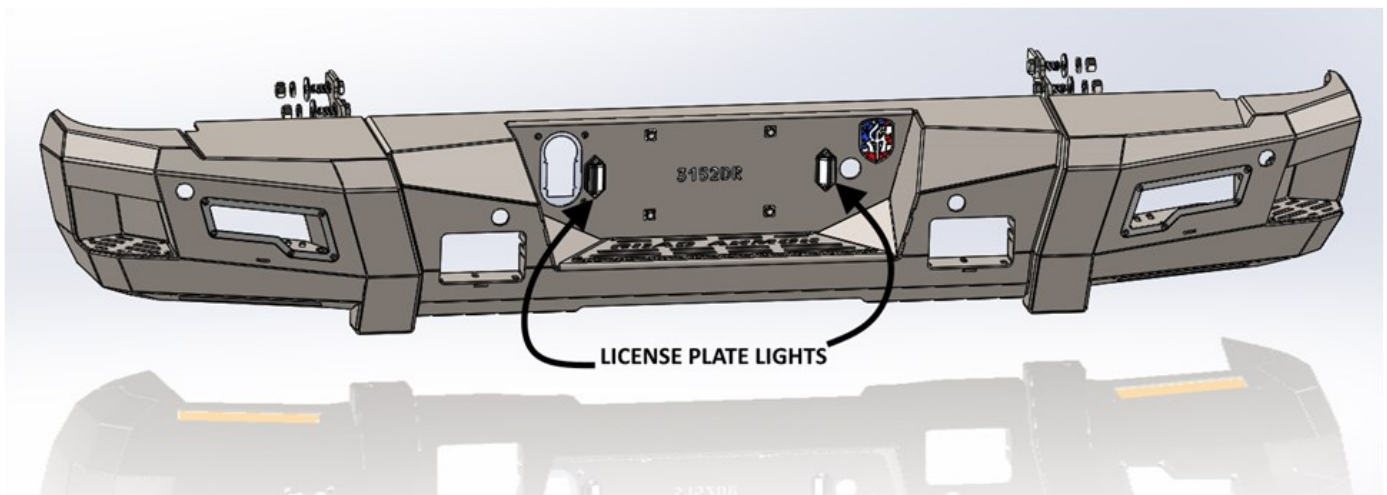
- 17** Install kit 3 - ½" Bolt Tabs into each End Pod Bumper Bracket with ½" Retainer Washers. (against bumper)

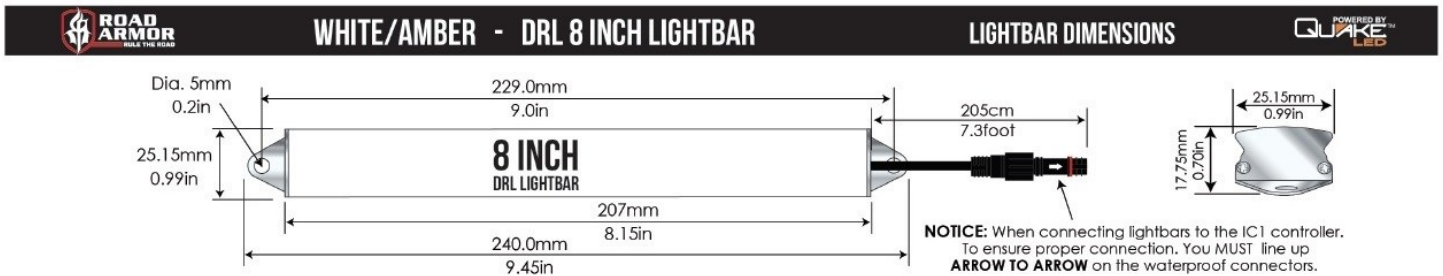
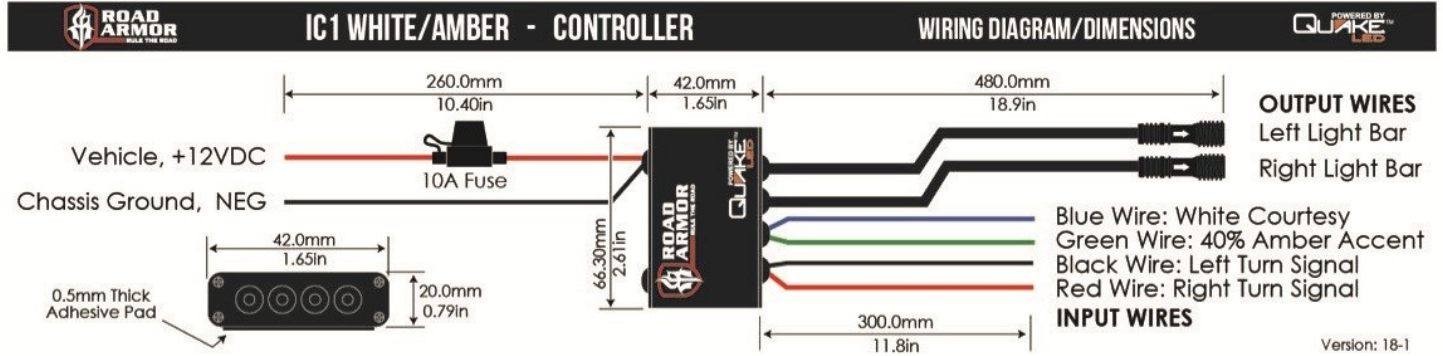


18 Install Bumper assembly onto Kit Frame Brackets using ½" Nuts, Lock Washers and Washers.



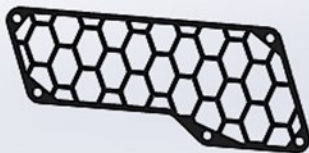
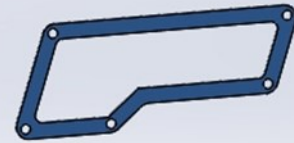
19 Wire Kit License Plate Lights into Factory harness.



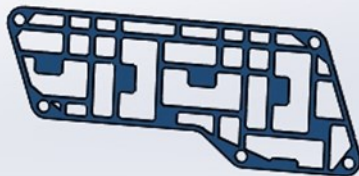
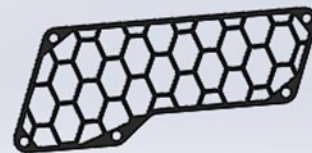




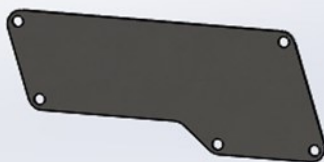
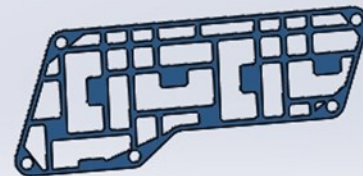
BEAUTY RING MESH KIT



HYVE MESH KIT



iD MESH KIT



BLOCK-OFF PLATE KIT

