

INSTALL INSTRUCTIONS

Brush Guard

Product : 2221-BRSH

Application : 2022-26 GMC 1500

I WARNING

Read the instructions completely before beginning installation. Before tightening bolts, drilling or cutting where required, check to make sure there are no obstructions such as brake, fuel or electrical lines which may be damaged. Also keep in mind this is an after-market product and MAY require minor shimming and/or trimming, reaming, etc. for proper fit. Road Armor is not responsible for any damages to vehicle.

i IMPORTANT NOTICE

- Be sure to inspect and test fit your product to ensure proper fitment before having it coated, painted, bed lined, etc.
- Road Armor will not be responsible for the cost of coating your unit if any problems with fit or finish are not

SAFETY FIRST!

- FOLLOW ALL INSTRUCTIONS, YOUR SAFETY AND THE SAFETY OF OTHERS IS MOST IMPORTANT.
- WEAR APPROPRIATE EYE PROTECTION AND EXERCISE CAUTION WHEN DRILLING / CUTTING

REQUIRED TOOLS

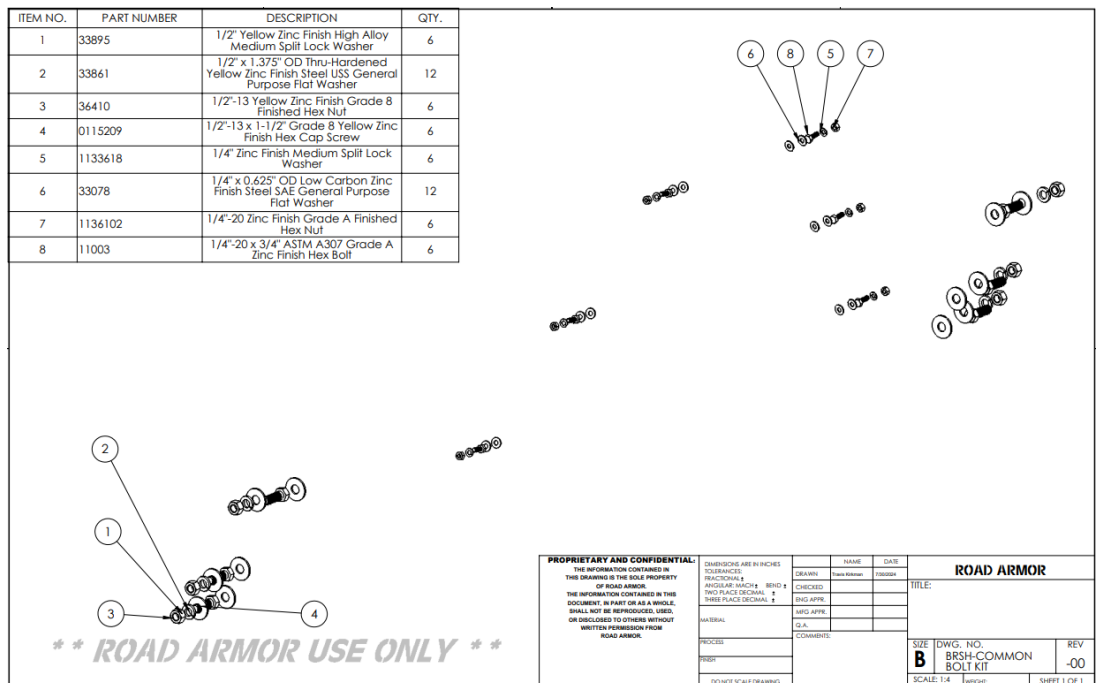
SAE & METRIC Socket set and wrenches
Screw drivers, pry tool, pick tool, pliers

RECOMMENDED TOOLS

Adjustable Table Cart / Table/Pallet Lift or Hoist
Impact driver

INCLUDED HARDWARE

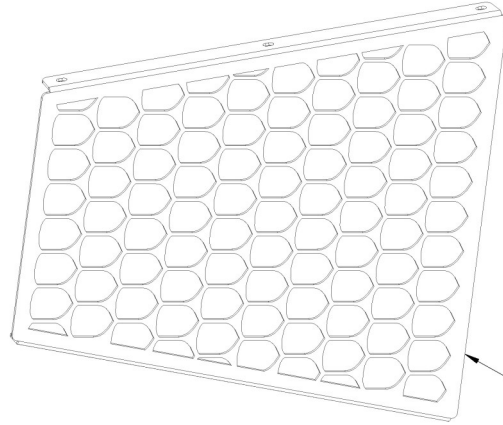
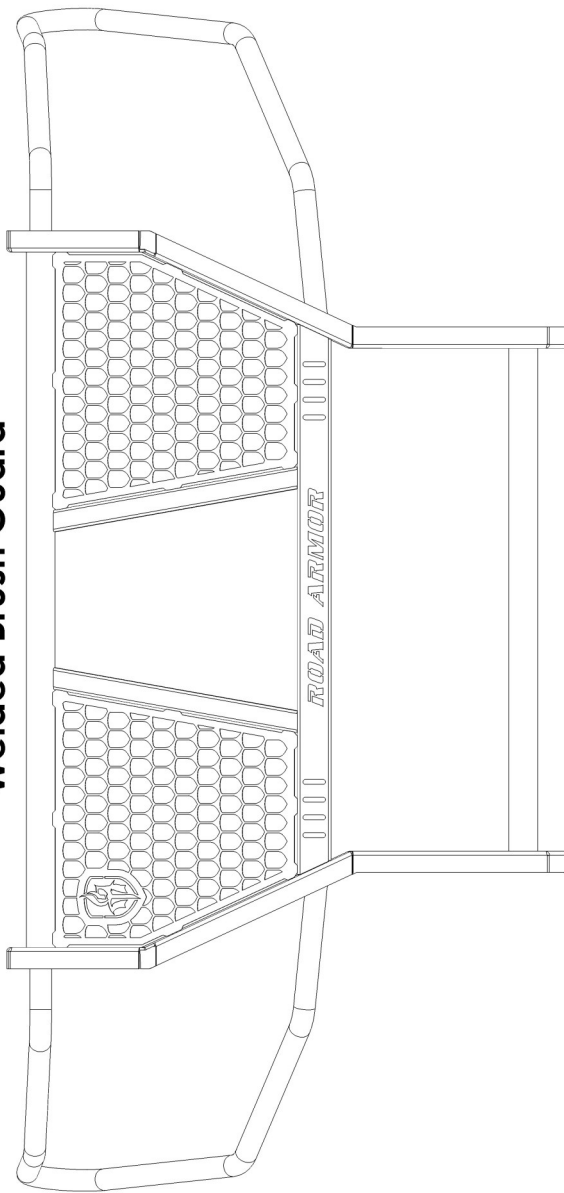
ITEM NO.	PART NUMBER	DESCRIPTION	QTY.
1	33895	1/2" Yellow Zinc Finish High Alloy Medium Split Lock Washer	6
2	33861	1/2" x 1.375" OD Thru-Hardened Yellow Zinc Finish Steel USS General Purpose Flat Washer	12
3	36410	1/2"-13 Yellow Zinc Finish Grade 8 Finished Hex Nut	6
4	0115209	1/2"-13 x 1-1/2" Grade 8 Yellow Zinc Finish Hex Cap Screw	6
5	1133618	1/4" Zinc Finish Medium Split Lock Washer	6
6	33078	1/4" x 0.625" OD Low Carbon Zinc Finish Steel SAE General Purpose Flat Washer	12
7	1136102	1/4"-20 Zinc Finish Grade A Finished Hex Nut	6
8	11003	1/4"-20 x 3/4" ASTM A307 Grade A Zinc Finish Hex Bolt	6



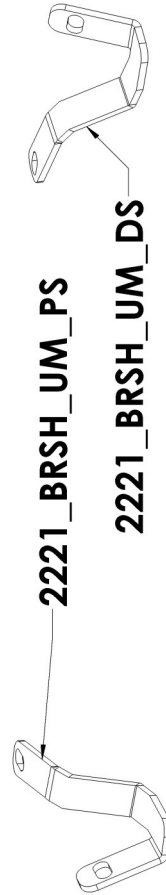
** ROAD ARMOR USE ONLY **

PROPRIETARY AND CONFIDENTIAL: THE INFORMATION CONTAINED IN THIS DRAWING IS THE SOLE PROPERTY OF ROAD ARMOR. THE INFORMATION CONTAINED IN THIS DOCUMENT IS PART OF A SINGLE, SHALL NOT BE REPRODUCED, USED, OR DISCLOSED TO OTHERS WITHOUT WRITTEN PERMISSION FROM ROAD ARMOR.		DIMENSIONS ARE IN INCHES UNLESS OTHERWISE INDICATED. ANGULAR TOLERANCES: ± THREE PLACE DECIMAL. HORIZONTAL: ± THREE PLACE DECIMAL. VERTICAL: ± THREE PLACE DECIMAL.	DATE: 11/15/17 DRAWN: [] CHECKED: [] ENG APPR: [] MFG APPR: [] DIA: [] COMMENTS: []	NAME: [] TITLE: [] SCALE: 1:4 WEIGHT: [] SHEET 1 OF 1
ROAD ARMOR		DWG. NO. BRSH-COMMON BOLT KIT REV -00		

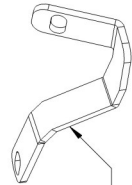
Welded Brush Guard



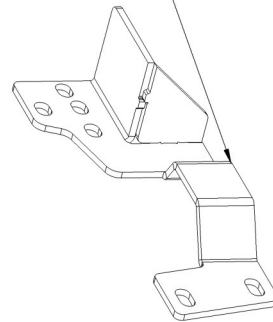
BRSH-RA Badge M_A



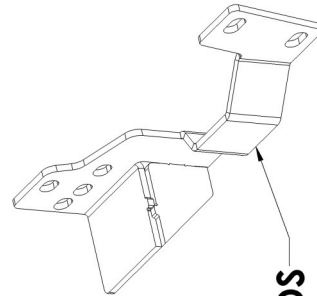
2221_BRSH_UM_PS



2221_BRSH_UM_DS



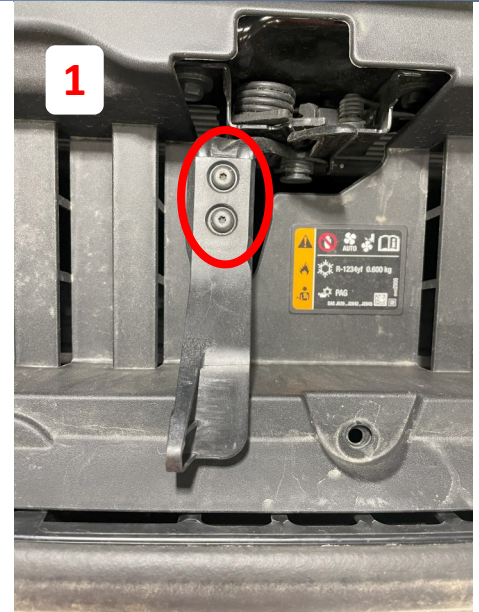
2221_BRSH_LM_PS



2221_BRSH_LM_DS

ALL DIMENSIONS ARE IN INCHES UNLESS OTHERWISE SPECIFIED TOLERANCE: FRACTIONAL: .010 ANGULAR: MACH: ±1° BEND: ±1° DIMENSIONS IN PARENTHESIS AND THREE PLACE DECIMAL: ±.010	DRAWN CHECKED ENG APPR.	NAME boban	DATE 5/16/2025	ROAD ARMOR RULE THE ROAD
PROPRIETARY AND CONFIDENTIAL: THE INFORMATION CONTAINED IN THIS DRAWING IS THE SOLE PROPERTY OF ROAD ARMOR. THE INFORMATION CONTAINED HEREIN IS TO BE USED AS A WHOLE, SHALL NOT BE REPRODUCED, USED, OR DISCLOSED TO OTHERS WITHOUT WRITTEN PERMISSION FROM ROAD ARMOR.	DESCRIPTION: 2221-BRSH_00			REV
ALL DIMENSIONS PER ASME Y14.5 2018	MATERIAL: Black Powder Coat			SIZE DWG-2221-BRSH_00 SHIPPING SCALE: 1:16 WEIGHT: 82.16

- 1 Remove Hood Latch.
- 2 Remove Cover on Top of Grille.

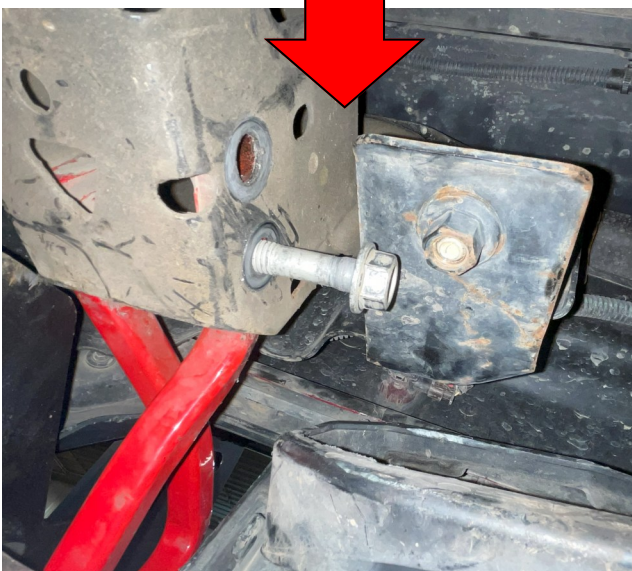


- 3 Remove the Front Fascia. Remove the Bolts in the Liner and Underneath the Fender.

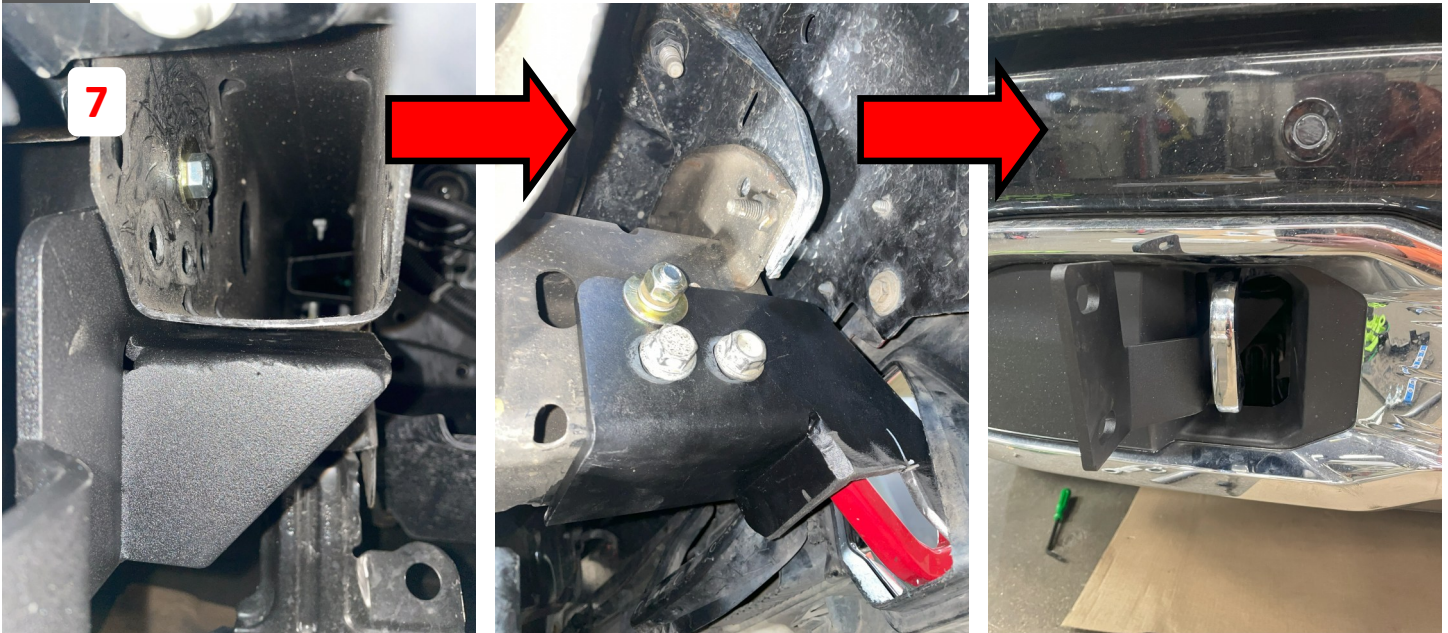




- 4 Remove the Grille.**
- 5 To Remove the Tow Hooks, Loosen Inner Bracket Bolt to Access Tow Hook Bolt.**
- 6 With Tow Hook Removed, Remove Plastic Cover around Tow Hook Opening. Install Lower Bracket.**



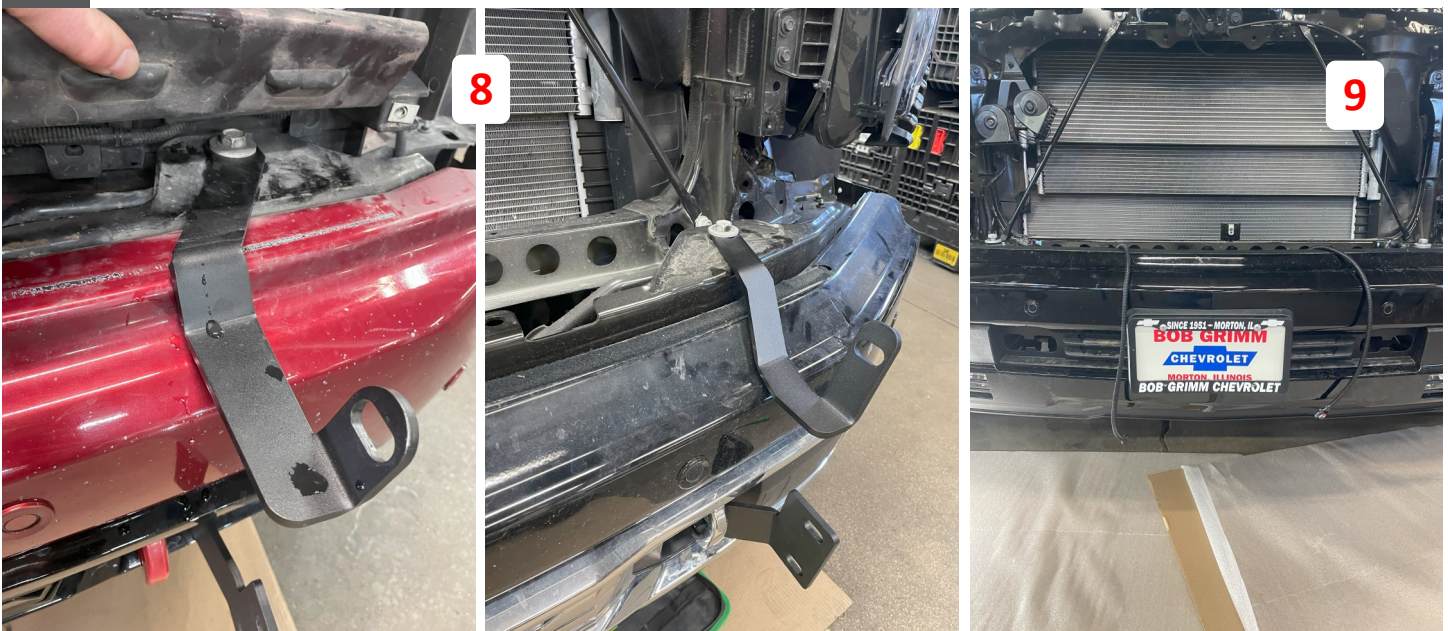
7 When Installing Lower Bracket, Mount as Shown. Then Install Tow Hooks using Factory Hardware.



8 Install Upper Bracket by Lifting Shroud to Access Bolt.

9 Install Sensor Extensions to the 2 center Plugs on the wiring harness.

10 Reinstall Grille by Clipping back in. Reinstall Top Cover and Hood Latch.
Reinstall Front Fascia and Connect Fog Lights. Don't forget the Bolts Underneath the fender and the Fender Liners.





11 Once Brackets are Installed and Truck is put back together, Install Road Armor Brush Guard. Add Sensor Deflector If Sensors Equipped.

