



# INSTALL INSTRUCTIONS

## Brush Guard

Product : 2221-BRSH

Application : 2022-26 GMC 1500

## I WARNING

Read the instructions completely before beginning installation. Before tightening bolts, drilling or cutting where required, check to make sure there are no obstructions such as brake, fuel or electrical lines which may be damaged. Also keep in mind this is an after-market product and MAY require minor shimming and/or trimming, reaming, etc. for proper fit. Road Armor is not responsible for any damages to vehicle.

## IMPORTANT NOTICE

- Be sure to inspect and test fit your product to ensure proper fitment before having it coated, painted, bed lined, etc.
- Road Armor will not be responsible for the cost of coating your unit if any problems with fit or finish are not addressed beforehand.

## SAFETY FIRST!

- FOLLOW ALL INSTRUCTIONS, YOUR SAFETY AND THE SAFETY OF OTHERS IS MOST IMPORTANT.
- WEAR APPROPRIATE EYE PROTECTION AND EXERCISE CAUTION WHEN DRILLING / CUTTING

## REQUIRED TOOLS

SAE & METRIC Socket set and wrenches

Screw drivers, pry tool, pick tool, pliers

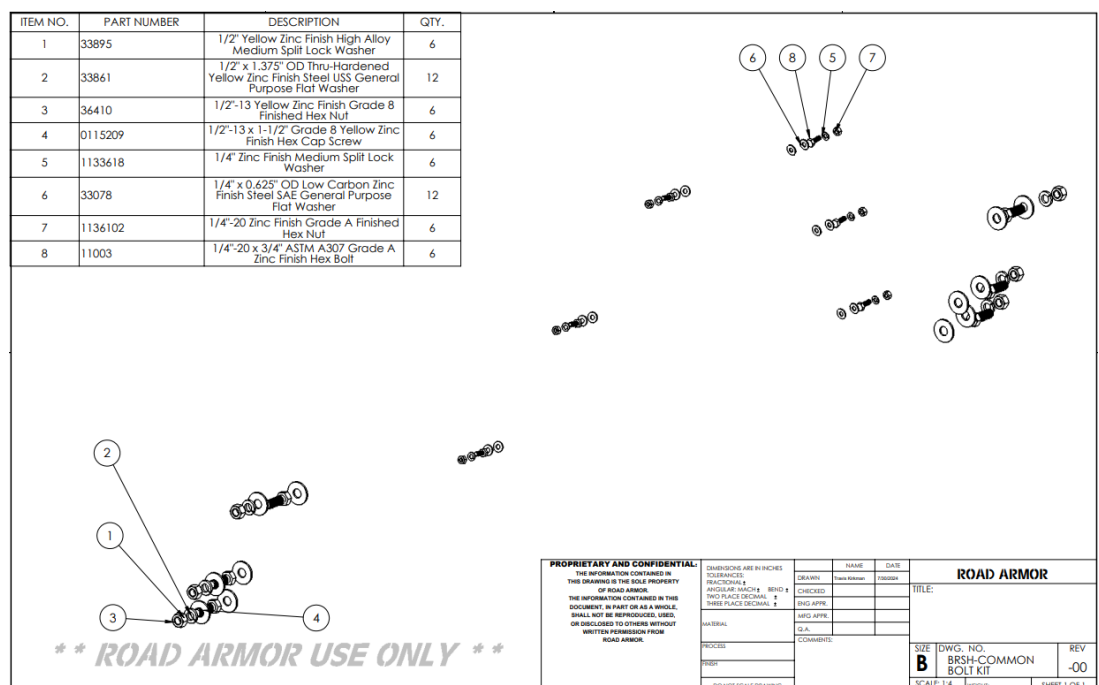
## RECOMMENDED TOOLS

Adjustable Table Cart / Table/Pallet Lift or Hoist

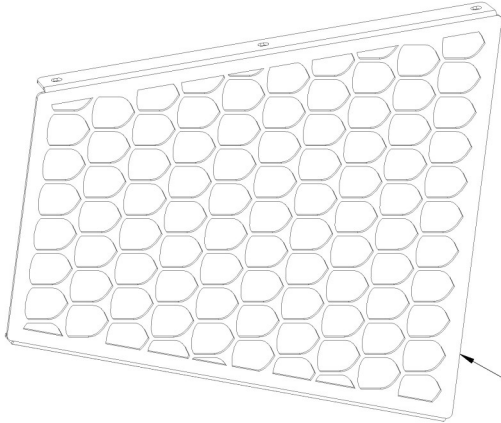
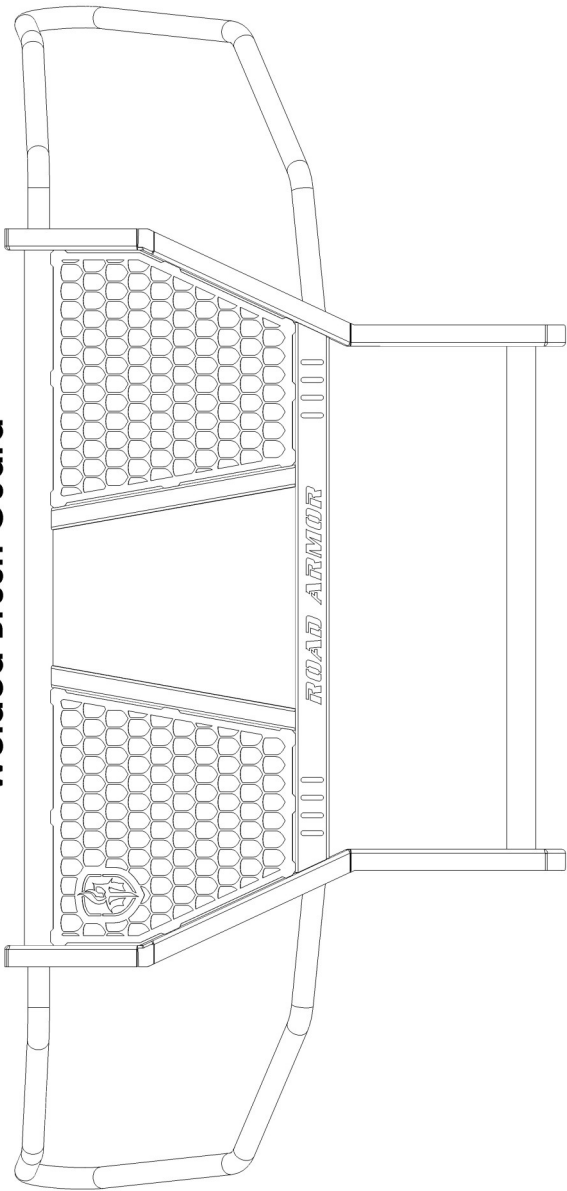
Impact driver

## INCLUDED HARDWARE

ITEM NO.	PART NUMBER	DESCRIPTION	QTY.
1	33895	1/2" Yellow Zinc Finish High Alloy Medium Split Lock Washer	6
2	33861	1/2" x 1.375" OD Thru-Hardened Yellow Zinc Finish Steel USS General Purpose Flat Washer	12
3	36410	1/2"-13 Yellow Zinc Finish Grade 8 Finished Hex Nut	6
4	0115209	1/2"-13 x 1-1/2" Grade 8 Yellow Zinc Finish Hex Cap Screw	6
5	1133618	1/4" Zinc Finish Medium Split Lock Washer	6
6	33078	1/4" x 0.625" OD Low Carbon Zinc Finish Steel SAE General Purpose Flat Washer	12
7	1136102	1/4"-20 Zinc Finish Grade A Finished Hex Nut	6
8	11003	1/4"-20 x 3/4" ASTM A307 Grade A Zinc Finish Hex Bolt	6



Welded Brush Guard




BRSH-RA Badge M\_A

2221\_BRSH\_UM\_PS

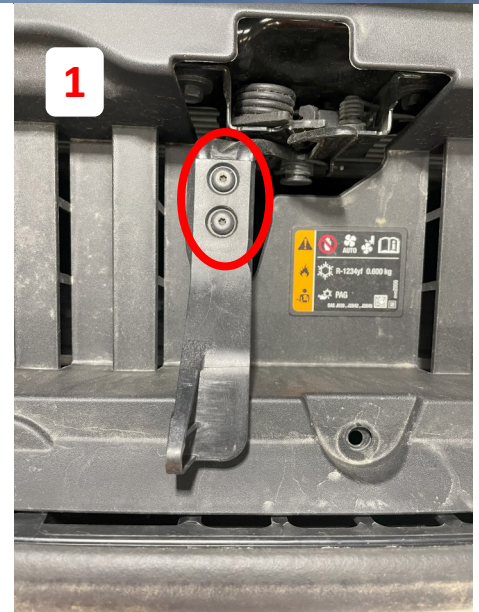
2221\_BRSH\_UM\_DS

2221\_BRSH\_LM\_PS

2221\_BRSH\_LM\_DS

ALL DIMENSIONS ARE IN INCHES UNLESS OTHERWISE SPECIFIED TOLERANCE: FRACTIONAL: ±.010 DECIMAL: ±.005 ANGULAR: MACH: ±1° BEND: ±1° DIMENSIONS IN PARENTHESES ARE FOR INFORMATION ONLY. THREE PLACE DECIMAL: ±0.0	DRAWN	NAME	DATE	 <div>ROAD ARMOR</div> <div>SAFETY</div> <div>RULE THE ROAD</div>
	CHECKED	boban	5/16/2025	
	ENG APPR.		5/16/2025	
PROPRIETARY AND CONFIDENTIAL: THE INFORMATION CONTAINED IN THIS DRAWING IS THE SOLE PROPERTY OF ROAD ARMOR. THE INFORMATION CONTAINED HEREIN IS TO BE USED ONLY FOR THE PROJECT AND SITE SPECIFIC FOR WHICH IT WAS PREPARED. IT IS NOT TO BE REPRODUCED, COPIED, OR DISCLOSED TO OTHERS WITHOUT WRITTEN PERMISSION FROM ROAD ARMOR.				
ALL DIMENSIONS PER ASMN Y14.5 2018	DESCRIPTION: 2221-BRSH_00			
MATERIAL:				
PROCESS:				
FINISH:	Black Powder Coat			
SIZE	DWG: 2221-BRSH_00	REV		
B	SHIPPING			
SCALE: 1:16	WEIGHT: 82.16	SHEET 1 OF 1		

- 1 Remove Hood Latch.
- 2 Remove Cover on Top of Grille.

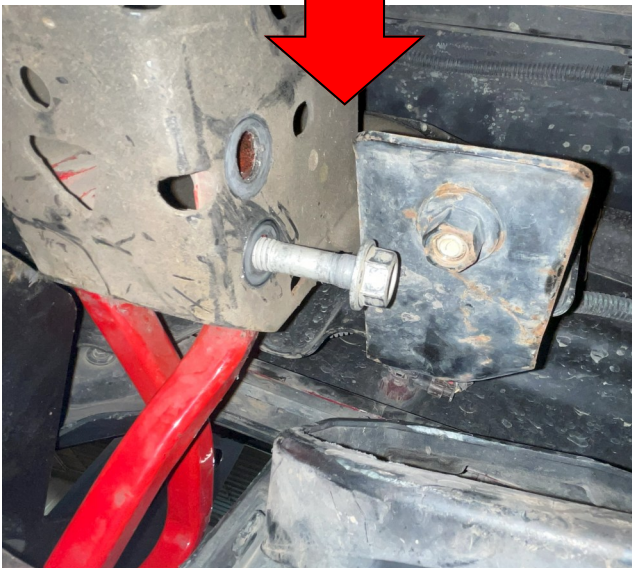


- 3 Remove the Front Fascia. Remove the Bolts in the Liner and Underneath the Fender.

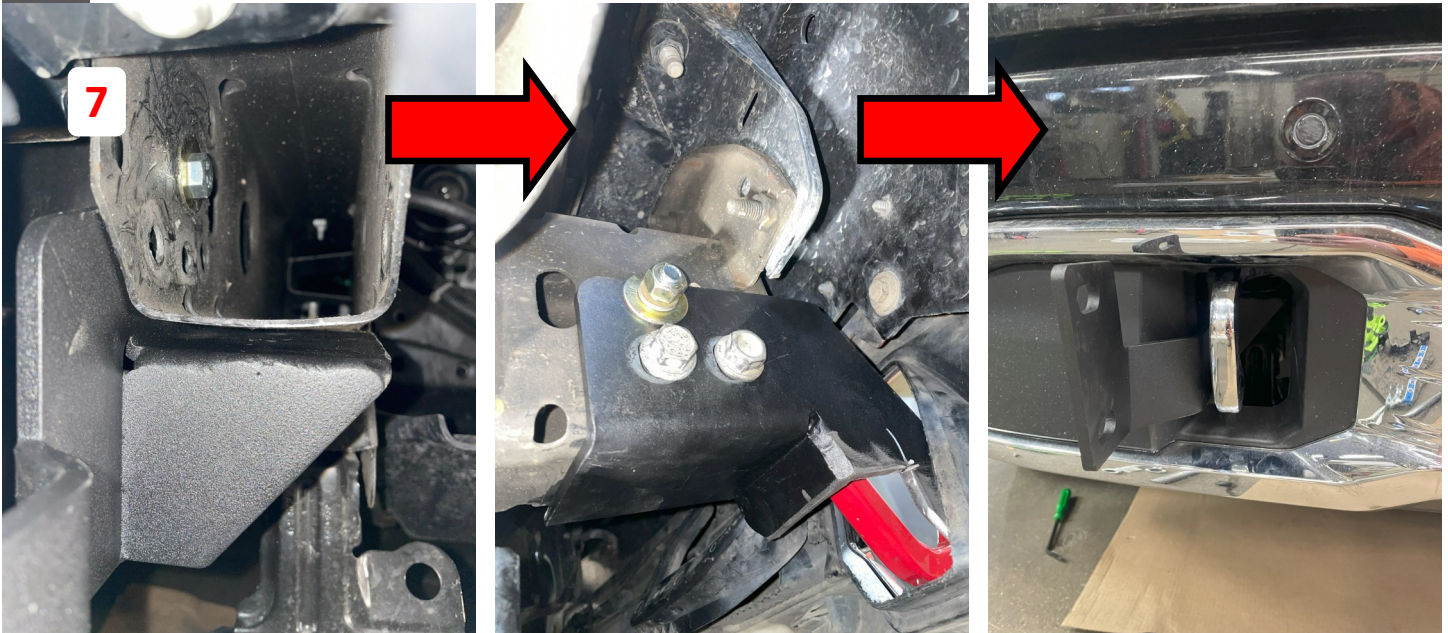




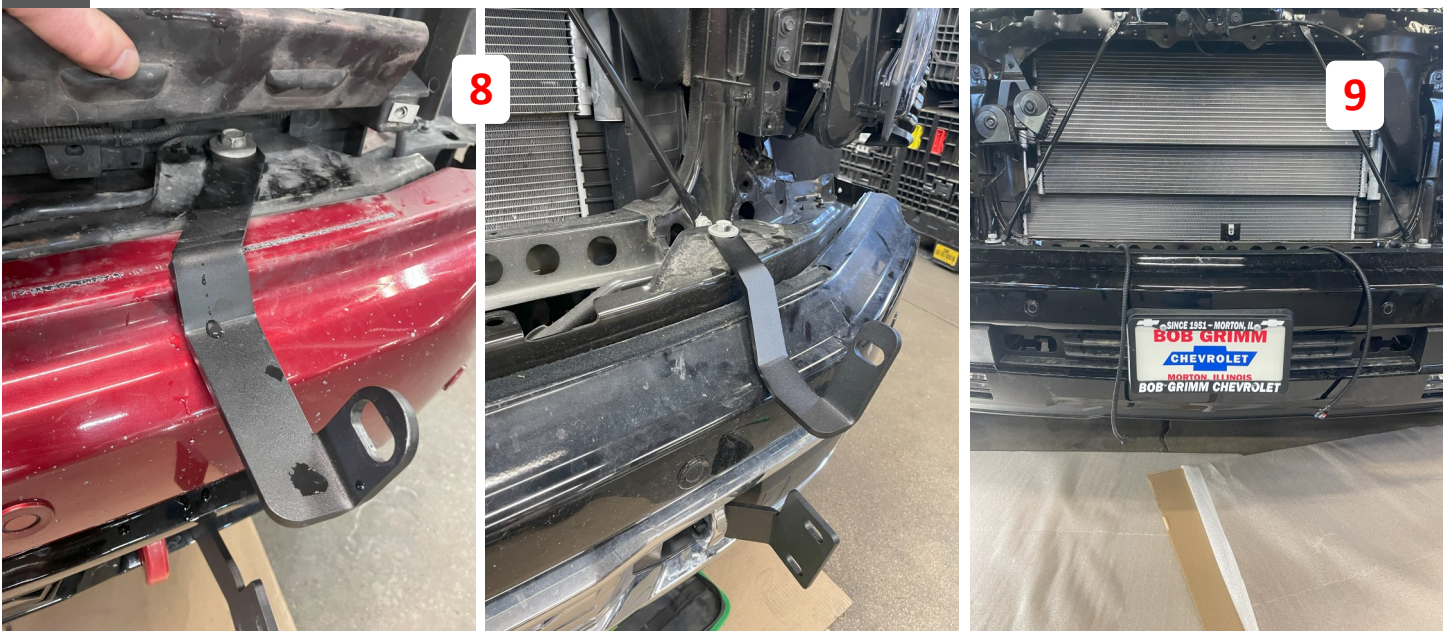
- 4 Remove the Grille.**
- 5 To Remove the Tow Hooks, Loosen Inner Bracket Bolt to Access Tow Hook Bolt.**
- 6 With Tow Hook Removed, Remove Plastic Cover around Tow Hook Opening. Install Lower Bracket.**



- 7** When Installing Lower Bracket, Mount as Shown. Then Install Tow Hooks using Factory Hardware.



- 8** Install Upper Bracket by Lifting Shroud to Access Bolt.
- 9** Install Sensor Extensions to the 2 center Plugs on the wiring harness.
- 10** Reinstall Grille by Clipping back in. Reinstall Top Cover and Hood Latch.  
Reinstall Front Fascia and Connect Fog Lights. Don't forget the Bolts Underneath the fender and the Fender Liners.





**11** Once Brackets are Installed and Truck is put back together, Install Road Armor Brush Guard. Add Sensor Deflector If Sensors Equipped.

