

# INSTALL INSTRUCTIONS

## Brush Guard

Product : 2202-BRSH

Application : 2020-23, 2024-26 GMC 2500/3500

## I WARNING

Read the instructions completely before beginning installation. Before tightening bolts, drilling or cutting where required, check to make sure there are no obstructions such as brake, fuel or electrical lines which may be damaged. Also keep in mind this is an after-market product and MAY require minor shimming and/or trimming, reaming, etc. for proper fit. Road Armor is not responsible for any damages to vehicle.

## i IMPORTANT NOTICE

- Be sure to inspect and test fit your product to ensure proper fitment before having it coated, painted, bed lined, etc.
- Road Armor will not be responsible for the cost of coating your unit if any problems with fit or finish are not

## SAFETY FIRST!

- FOLLOW ALL INSTRUCTIONS, YOUR SAFETY AND THE SAFETY OF OTHERS IS MOST IMPORTANT.
- WEAR APPROPRIATE EYE PROTECTION AND EXERCISE CAUTION WHEN DRILLING / CUTTING

## REQUIRED TOOLS

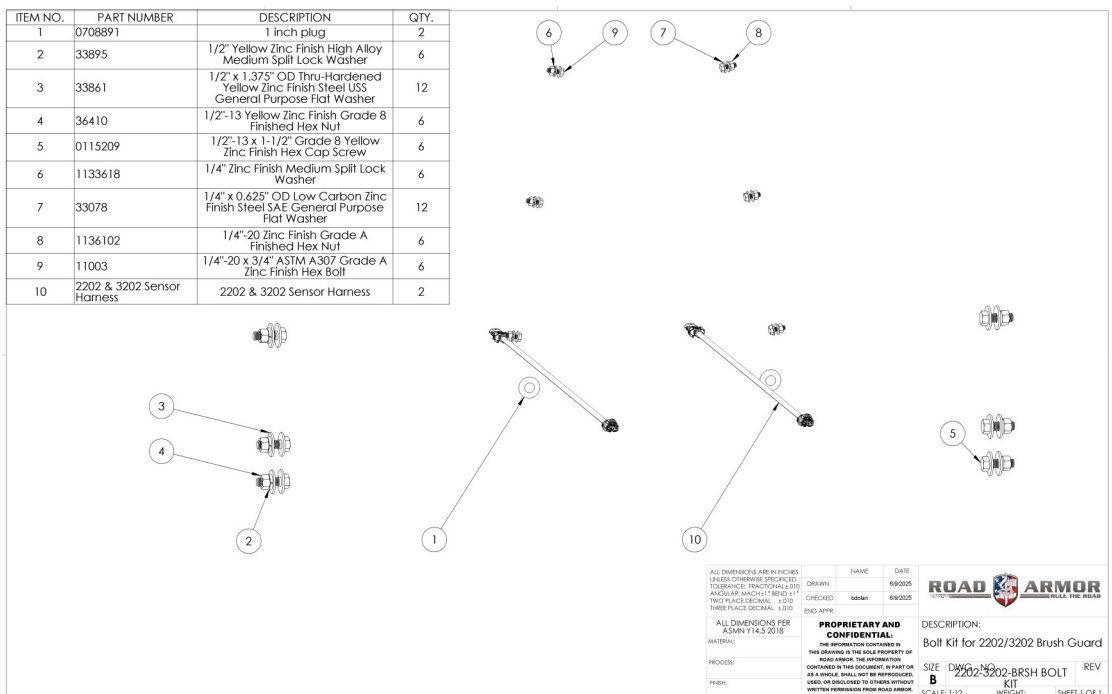
SAE & METRIC Socket set and wrenches  
Screw drivers, pry tool, pick tool, pliers

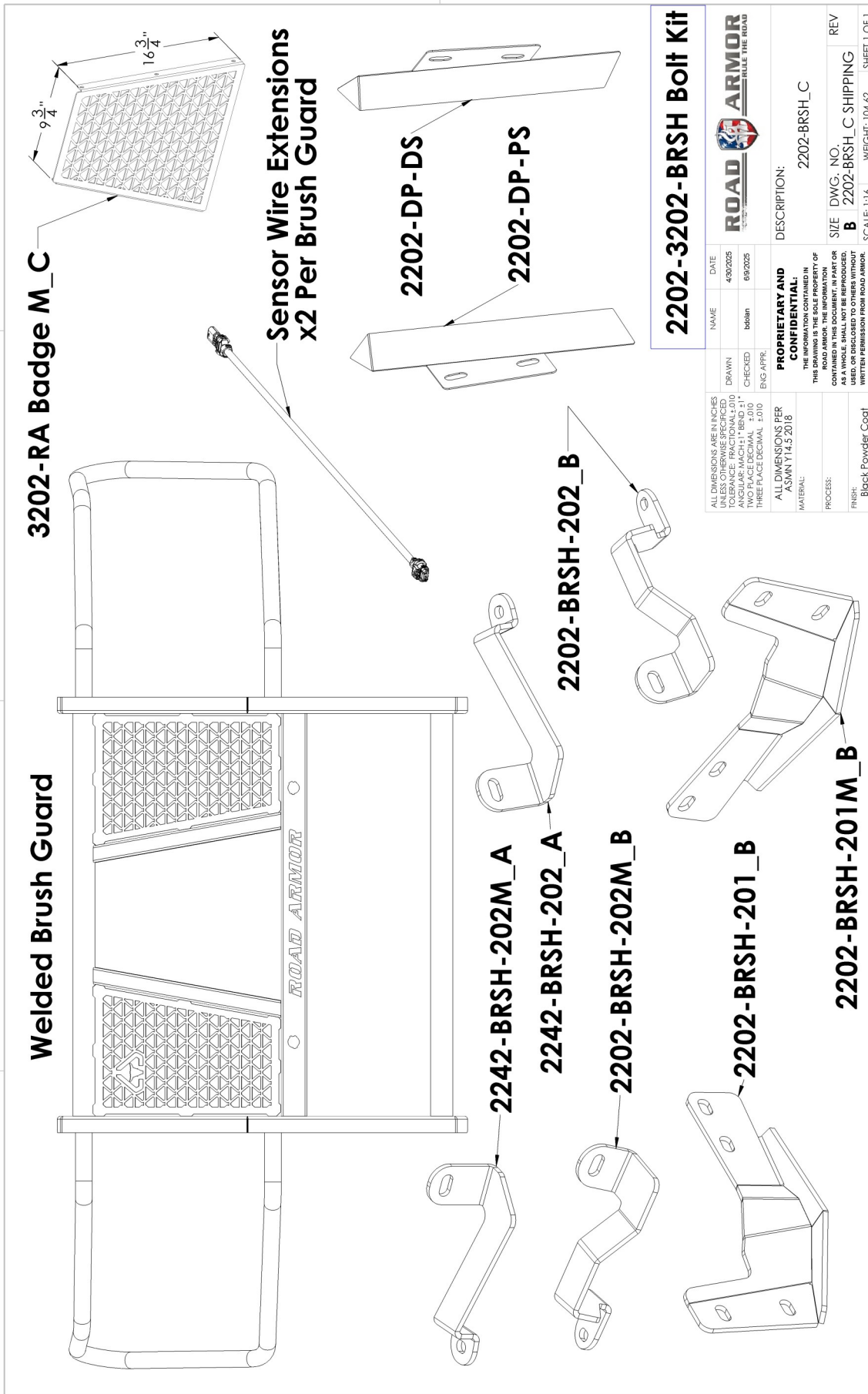
## RECOMMENDED TOOLS

Adjustable Table Cart / Table/Pallet Lift or Hoist  
Impact driver

## INCLUDED HARDWARE

ITEM NO.	PART NUMBER	DESCRIPTION	QTY.
1	0708891	1 inch plug	2
2	33895	1/2" Yellow Zinc Finish High Alloy Medium Spill Lock Washer	6
3	33861	1/2" x 1.375" OD Thru-Hardened Yellow Zinc Finish Steel USS General Purpose Flat Washer	12
4	36410	1/2"-13 Yellow Zinc Finish Grade 8 Finished Hex Nut	6
5	0115209	1/2"-13 x 1-1/2" Grade 8 Yellow Zinc Finish Hex Cap Screw	6
6	1133618	1/4" Zinc Finish Medium Spill Lock Washer	6
7	33078	1/4" x 0.625" OD Low Carbon Zinc Finish Steel SAE General Purpose Flat Washer	12
8	1136102	1/4"-20 Zinc Finish Grade A Finished Hex Nut	6
9	11003	1/4"-20 x 3/4" ASTM A307 Grade A Zinc Finish Hex Bolt	6
10	2202 & 3202 Sensor Harness	2202 & 3202 Sensor Harness	2





2202-3202-BRSH Bolt Kit	
NAME	DATE
4302025	4302025
DRAWN	CHECKED
bbsh	bbsh
ENG APPR.	ENG APPR.
<b>PROPRIETARY AND CONFIDENTIAL:</b> THIS DRAWING IS THE PROPERTY OF ROAD ARMOR. THE INFORMATION CONTAINED IN THIS DOCUMENT, IN PART OR AS A WHOLE, SHALL NOT BE REPRODUCED, COPIED, OR TRANSMITTED IN ANY FORM OR BY ANY MEANS, WITHOUT THE WRITTEN PERMISSION FROM ROAD ARMOR.	
DESCRIPTION: 2202-BRSH_C	
SIZE	DWG. NO.
B	2202-BRSH_C SHIPPING
SCALE: 1:16	WEIGHT: 104.62
SHEET 1 OF 1	

# Upper bracket identification

**2202-BRSH-202 upper bracket**

**Passenger side for 2020-2023 models**

**2202-BRSH-202M upper bracket**

**Drivers side for 2017-2022 models**

**Discard 2242-BRSH-202/2242-BRSH-202M**

**2242-BRSH-202 upper bracket**

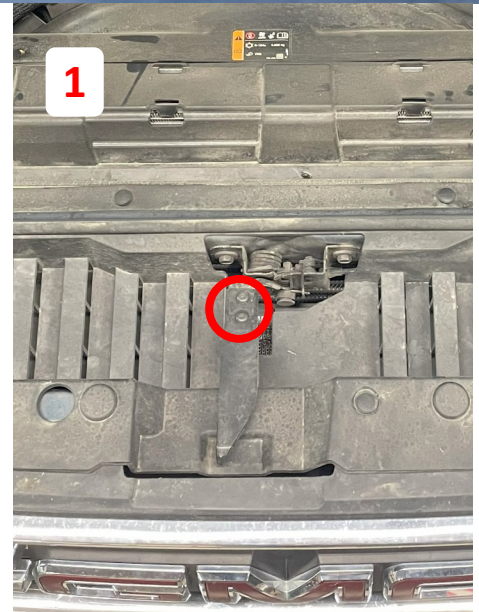
**Passenger side for 2024 and up models**

**2242-BRSH-202M upper bracket-**

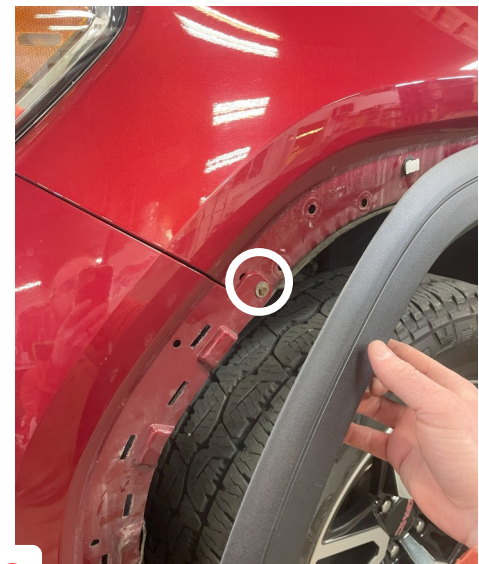
**Drivers side for 2024 and up models**

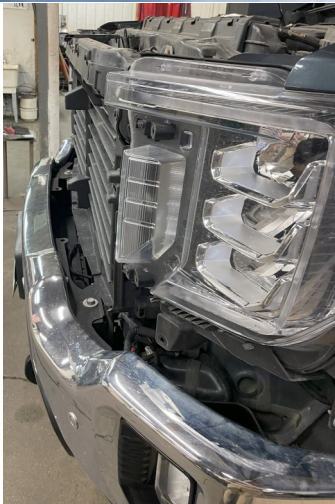
**Discard 2202-BRSH-202/2202-BRSH-202M**

- 1 Remove Hood Latch.
- 2 Remove Cover on Top of Grille.

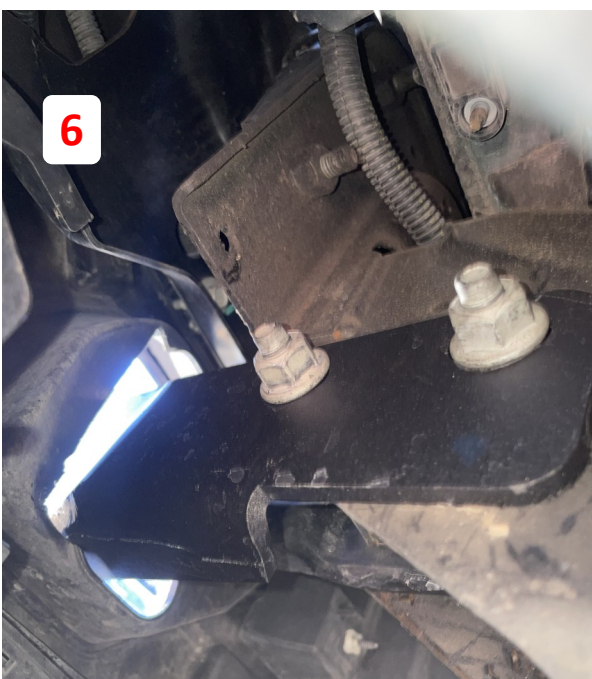
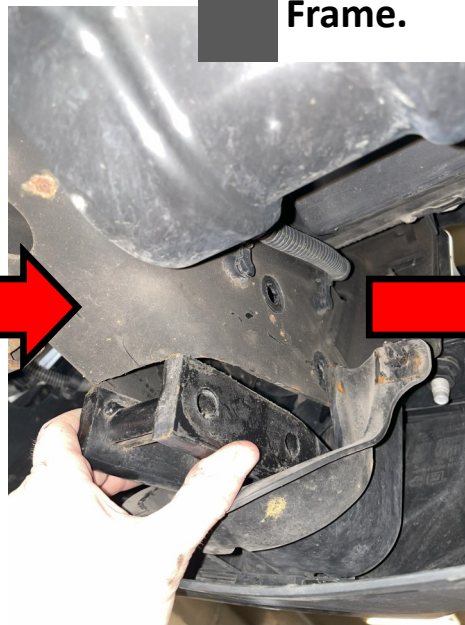
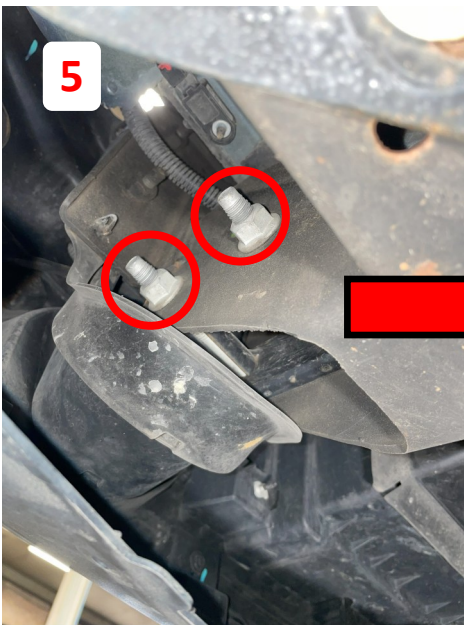


- 3 Remove the Front Fascia. Remove the Bolts in the Liner and Underneath the Fender.



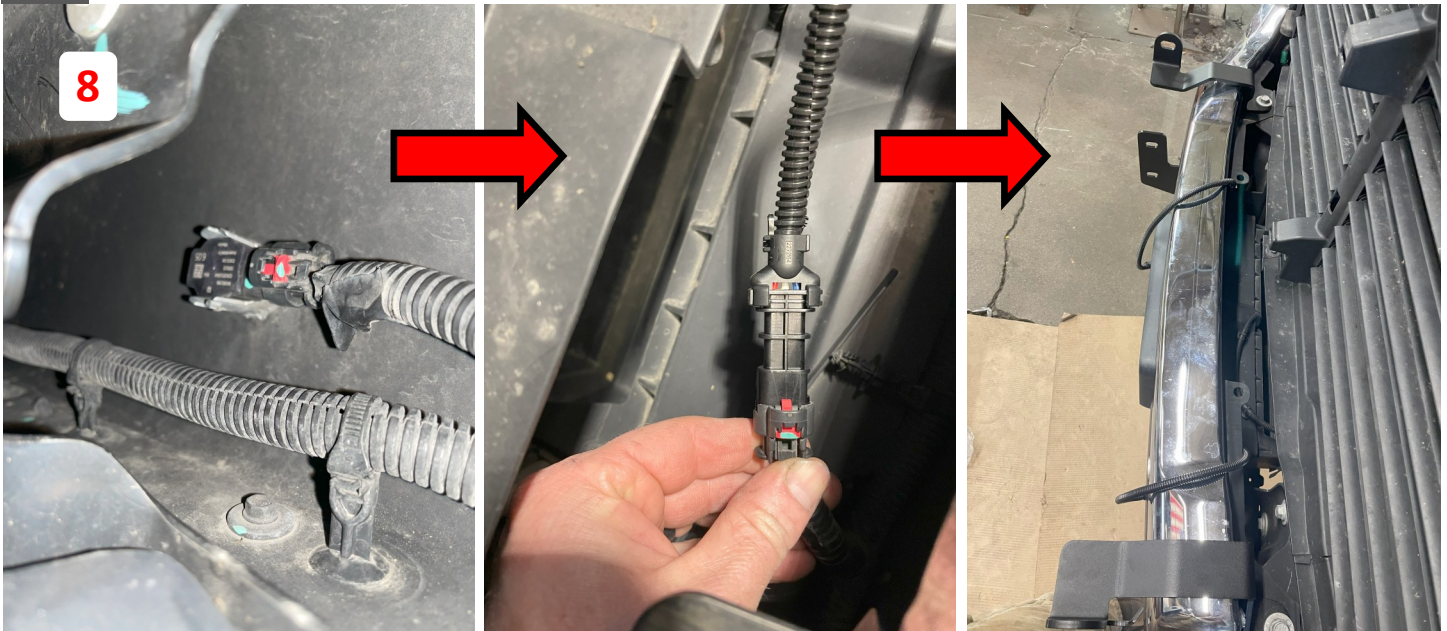


- 4 Remove the Grille.
- 5 Remove the Tow Hooks, by pulling from Behind the Bumper. Remove Rubber Shroud.
- 6 Reinstall Tow Hook, Mount Lower Bracket on the Outside of the Frame.



- 7 Mount Upper Brackets using factory bolts as shown.

- 8 Remove the Center Sensors and Housings from the Bumper and Unplug from the wiring harness. Plug in the provided wire extension.**



- 9 Align Upper and Lower Brackets before reinstalling the Grille, Top Cover, and Hood Latch.**

- 10 Mount Brush Guard with the Brackets on the Inside. If Sensors are equipped, mount the Sensor Deflector on the Outside of the Upright as shown.**



**11** Plug Sensor Extensions into the Sensors that were moved to the Center Crossbar. Center Mesh can be Removed for better camera view.



**Finished**

