

# INSTALL INSTRUCTIONS

## Brush Guard

Product : 2191-BRSH

Application : 2019-21 GMC 1500

## I WARNING

Read the instructions completely before beginning installation. Before tightening bolts, drilling or cutting where required, check to make sure there are no obstructions such as brake, fuel or electrical lines which may be damaged. Also keep in mind this is an after-market product and MAY require minor shimming and/or trimming, reaming, etc. for proper fit. Road Armor is not responsible for any damages to vehicle.

## i IMPORTANT NOTICE

- Be sure to inspect and test fit your product to ensure proper fitment before having it coated, painted, bed lined, etc.
- Road Armor will not be responsible for the cost of coating your unit if any problems with fit or finish are not

## SAFETY FIRST!

- FOLLOW ALL INSTRUCTIONS, YOUR SAFETY AND THE SAFETY OF OTHERS IS MOST IMPORTANT.
- WEAR APPROPRIATE EYE PROTECTION AND EXERCISE CAUTION WHEN DRILLING / CUTTING

## REQUIRED TOOLS

SAE & METRIC Socket set and wrenches

Screw drivers, pry tool, pick tool, pliers

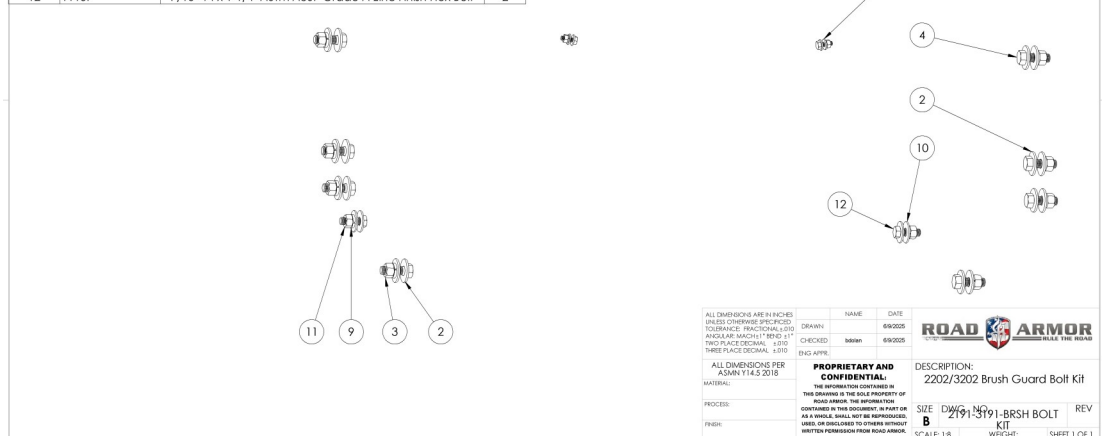
## RECOMMENDED TOOLS

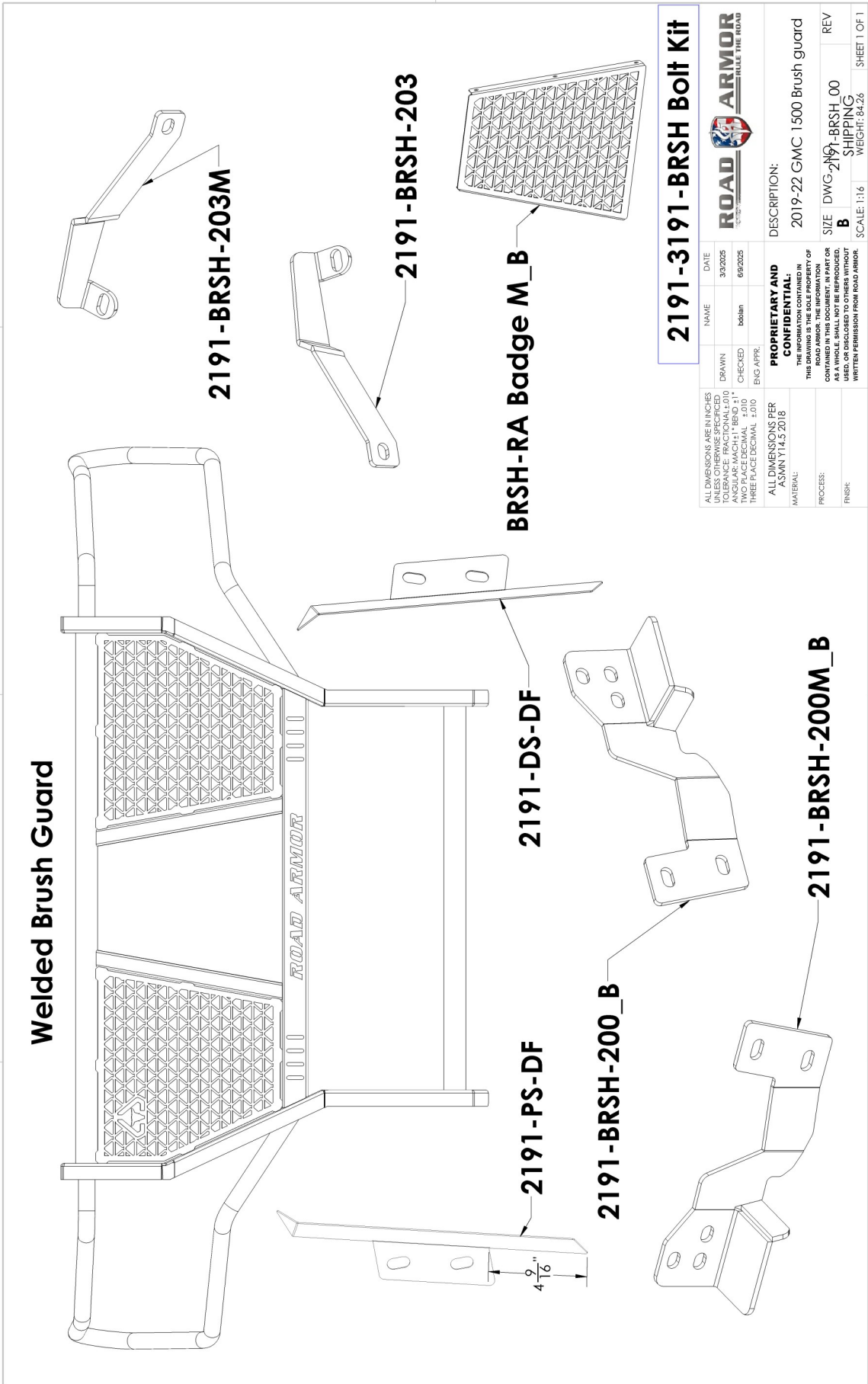
Adjustable Table Cart / Table/Pallet Lift or Hoist

Impact driver

## INCLUDED HARDWARE

| ITEM NO. | PART NUMBER | DESCRIPTION  | QTY. |
|----------|-------------|--|------|
| 1        | 33895       | 1/2" Yellow Zinc Finish High Alloy Medium Split Lock Washer                              | 8    |
| 2        | 33861       | 1/2" x 1.375" OD Thru-Hardened Yellow Zinc Finish Steel USS General Purpose Flat Washer  | 16   |
| 3        | 36410       | 1/2"-13 Yellow Zinc Finish Grade 8 Finished Hex Nut                                      | 8    |
| 4        | 0115209     | 1/2"-13 x 1-1/2" Grade 8 Yellow Zinc Finish Hex Cap Screw                                | 8    |
| 5        | 1133618     | 1/4" Zinc Finish Medium Split Lock Washer  | 6    |
| 6        | 33078       | 1/4" x 0.625" OD Low Carbon Zinc Finish Steel SAE General Purpose Flat Washer            | 12   |
| 7        | 1136102     | 1/4"-20 Zinc Finish Grade A Finished Hex Nut   | 6    |
| 8        | 11003       | 1/4"-20 x 3/4" ASTM A307 Grade A Zinc Finish Hex Bolt                                    | 6    |
| 9        | 33894       | 7/16" Yellow Zinc Finish High Alloy Medium Split Lock Washer                             | 2    |
| 10       | 1133860     | 7/16" x 1.250" OD Thru-Hardened Yellow Zinc Finish Steel USS General Purpose Flat Washer | 4    |
| 11       | 1136408     | 7/16"-14 Yellow Zinc Finish Grade 8 Finished Hex Nut                                     | 2    |
| 12       | 11157       | 7/16"-14 x 1-1/4" ASTM A307 Grade A Zinc Finish Hex Bolt                                 | 2    |



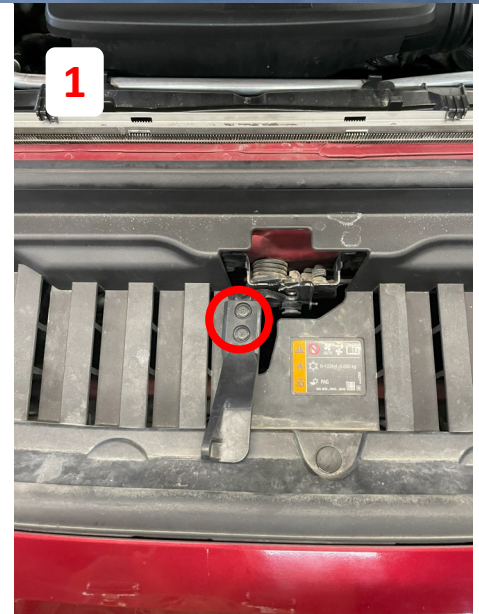


**2191-3191-BRSH Bolt Kit**

|   |          |                              |              |
|---|----------|------------------------------|--------------|
| ALL DIMENSIONS ARE IN INCHES<br>UNLESS OTHERWISE SPECIFIED<br>TOLERANCE: FRACTIONAL: .010<br>ANGULAR: MACH: ±1° BEND: ±1°<br>FIT: HOLE: RACE: REAMAL: .010<br>THREE PLACE DECIMAL: .010 | NAME     | DATE                         | DESCRIPTION: |
| DRAWN   | 3/3/2025 | 2019-22 GMC 1500 Brush guard |              |
| CHECKED   | 6/9/2025 | SIZE DWG: 2191-BRSH_00       |              |
| ENG APPR.   |          | REV B                        |              |
|   |          | SHIPPING                     |              |
|   |          | SCALE: 1:16                  |              |
|   |          | WEIGHT: 84.26                |              |
|   |          | SHEET 1 OF 1                 |              |

**PROPRIETARY AND CONFIDENTIAL:**  
THE INFORMATION CONTAINED IN THIS DRAWING IS THE SOLE PROPERTY OF ROAD ARMOR. THE INFORMATION CONTAINED HEREIN IS TO BE USED AS A WHOLE AND SHALL NOT BE REPRODUCED, COPIED, OR DISCLOSED TO OTHERS WITHOUT WRITTEN PERMISSION FROM ROAD ARMOR.

- 1 Remove Hood Latch.
- 2 Remove Cover on Top of Grille.

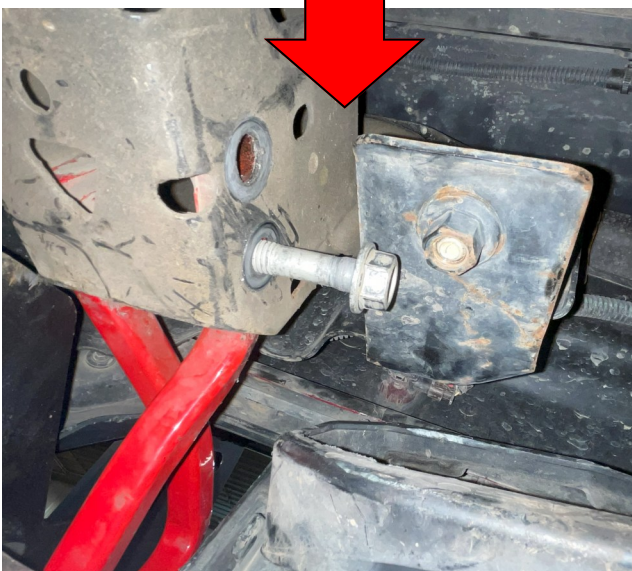
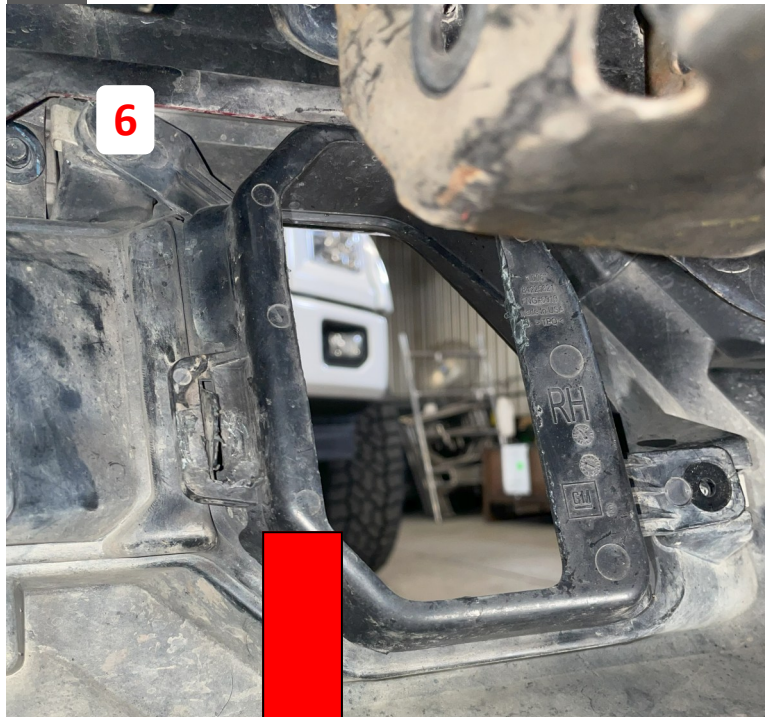


- 3 Remove the Front Fascia. Remove the Bolts in the Liner and Underneath the Fender.

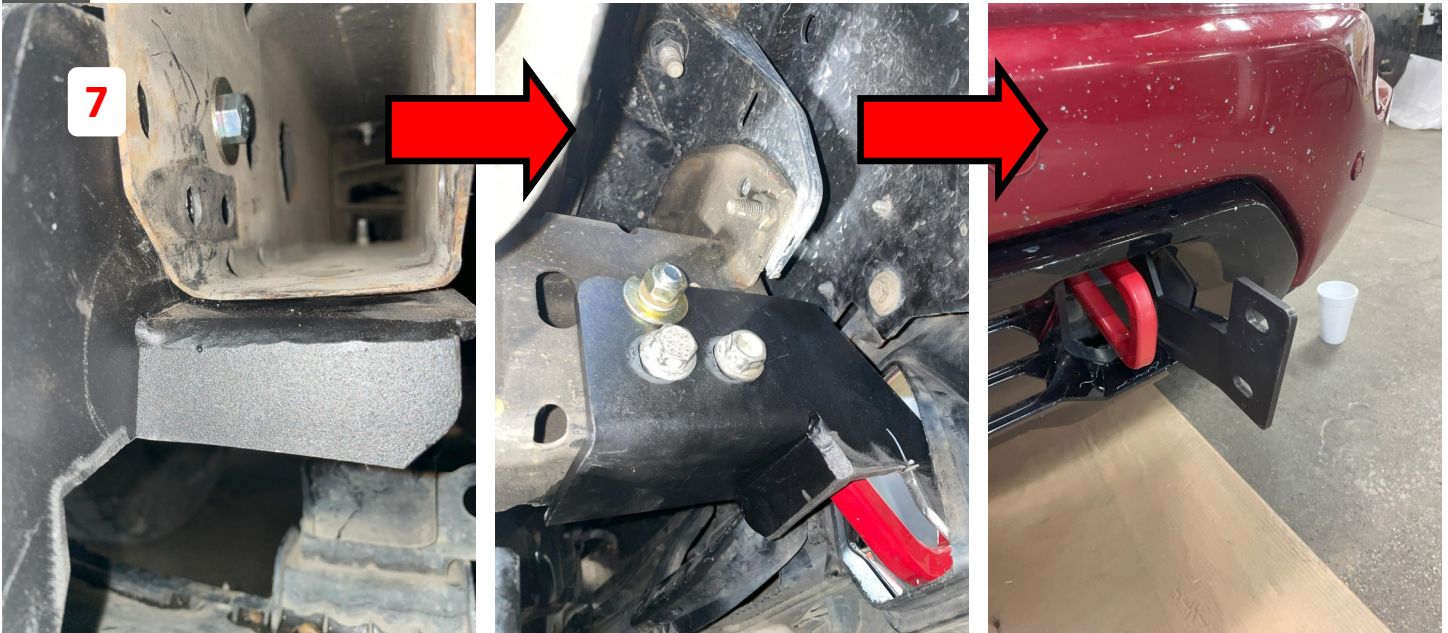




- 4 Remove the Grille.
- 5 To Remove the Tow Hooks, Loosen Inner Bracket Bolt to Access Tow Hook Bolt.
- 6 With Tow Hook Removed, Remove Plastic Cover around Tow Hook Opening. Install Lower Bracket.



**7** When Installing Lower Bracket, Mount as Shown. Then Install Tow Hooks using Factory Hardware.



**8** Install Upper Bracket by Lifting Shroud to Access Bolt.

**9** Reinstall Grille by Clipping back in. Reinstall Top Cover and Hood Latch.

**10** Reinstall Front Fascia and Connect Fog Lights. Don't forget the Bolts Underneath the fender and the Fender Liners.



10



**11** Once Brackets are Installed and Truck is put back together, Install Road Armor Brush Guard. Add Sensor Deflector If Sensors Equipped.

**Finished**

