



INSTALL INSTRUCTIONS

Ineos Rear Bumper

Product : 1241R0X

Application : 2024+ Ineos Grenadier

I WARNING

Read the instructions completely before beginning installation. Before tightening bolts, drilling or cutting where required, check to make sure there are no obstructions such as brake, fuel or electrical lines which may be damaged. Also keep in mind this is an after-market product and MAY require minor shimming and/or trimming, reaming, etc. for proper fit. Road Armor is not responsible for any damages to vehicle.

ⓘ IMPORTANT NOTICE

- Be sure to inspect and test fit your product to ensure proper fitment before having it coated, painted, bed lined, etc.
- Road Armor will not be responsible for the cost of coating your unit if any problems with fit or finish are not

SAFETY FIRST!

- FOLLOW ALL INSTRUCTIONS, YOUR SAFETY AND THE SAFETY OF OTHERS IS MOST IMPORTANT.
- WEAR APPROPRIATE EYE PROTECTION AND EXERCISE CAUTION WHEN DRILLING / CUTTING

REQUIRED TOOLS

SAE & METRIC Socket set and wrenches

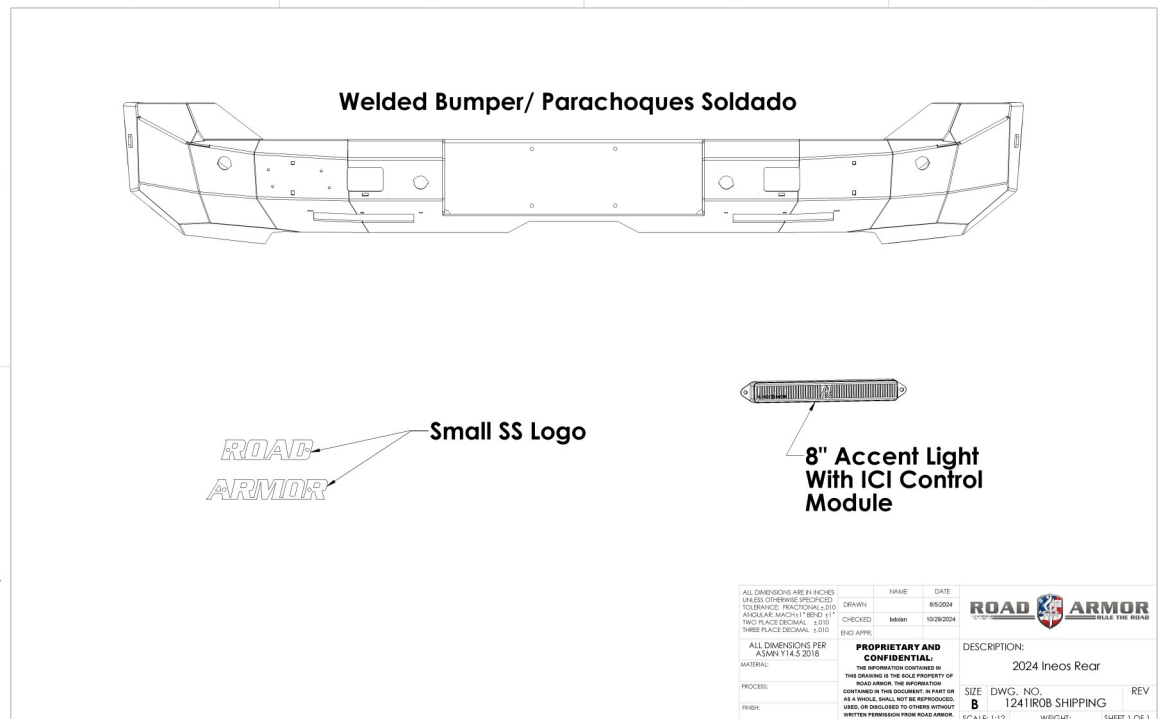
Screw drivers, pry tool, pick tool, pliers

RECOMMENDED TOOLS

Adjustable Table Cart / Table/Pallet Lift or Hoist

Impact driver

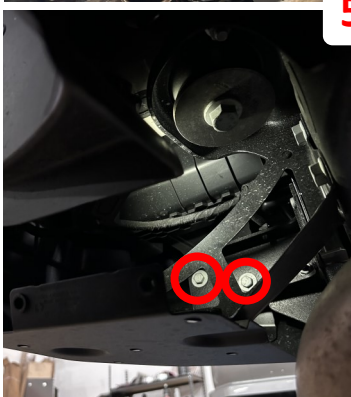
INCLUDED PARTS



- 1** Remove Hitch and Skid Plate. Both of these can be Reinstalled after the Road Armor Bumper is on.
- 2** Remove Plastic Cap and Remove Small Metal Bracket.
- 3** To Remove the Center Plastic section, the Sensors will have to be Taken out of their Housings. To Access Sensor, the License Plate Light will have to be Unbolted.



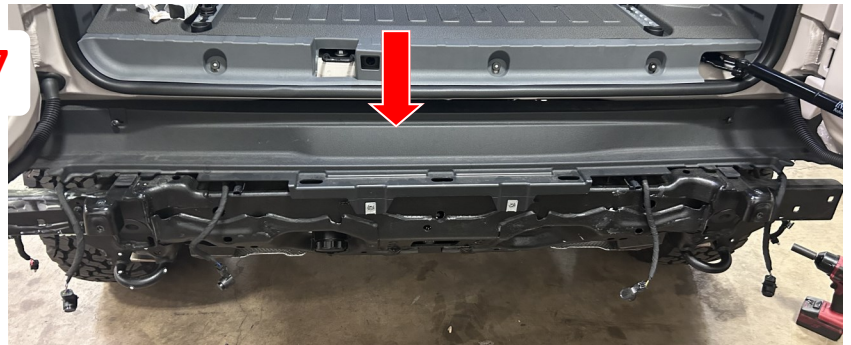
- 4** Now the License Plate Lights can be Unplugged to Remove the Center Section.
- 5** Remove 2 Bolts underneath each End Pod. Remove the Mud Flap. Then Unbolt End Pod Mounting Bolts.

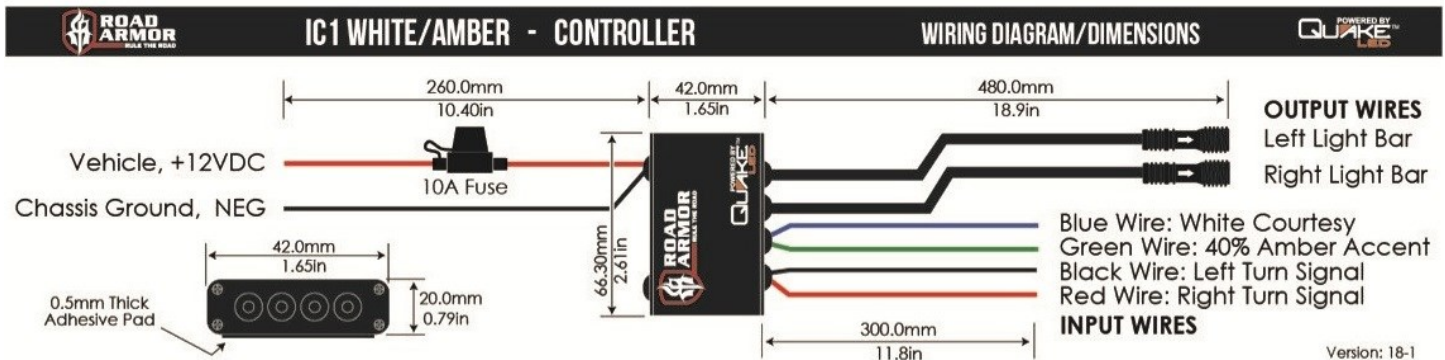
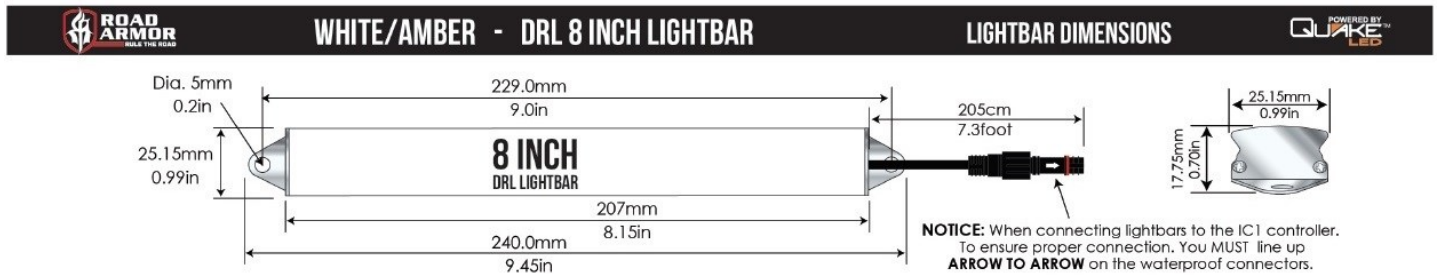


- 6** Once End Pods are Removed, Unbolt the Bracket that was supporting the End Pod.



- 7** Remove Metal Shell. Then Remove the Plastic Backing.
- 8** Prep Bumper for Install. Transfer Marker Lights from End pods to the Road Armor Bumper. Transfer Sensor Housings, Keep original Orientation. Install Lights, Accent Lights, and Logo. Install Inner Bolt Tab by Using Push Nut to Secure to Bracket. A Large Socket can be used to push the Nut on the Bolt Tab. (Installer Preference—Can Install Multiple or all Bolt Tabs on Weld in Bracket but this makes Lining the Bumper to Mounting Holes more Difficult.
- 9** Install License Plate and Transfer License Plate Lights to Road Armor Bumper.
- 10** Install Bumper onto Vehicle. Insert Sensors into Housings. Connect All Plugs. Adjust Fitment to Liking and then Tighten All Nuts and Bolts. Once Finished, Install Factory Mud Flaps.





11 Install Skid Plate and Receiver Hitch.



Finished!

